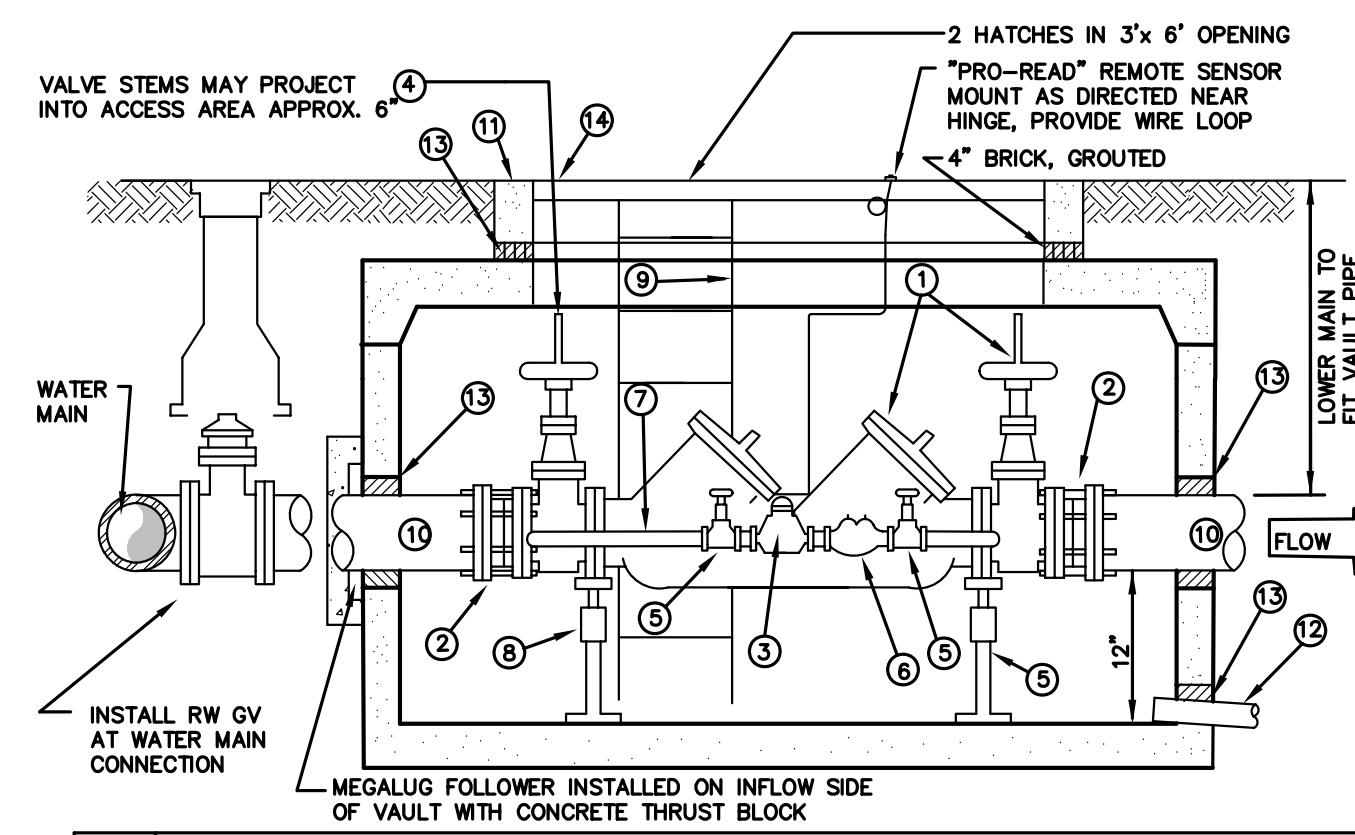


- NOTES:**
1. INSTALLATION OF HOT BOX SUBJECT TO APPROVAL OF DISTRICT AS AN ALTERNATE TO VAULTS.
 2. ALUMINUM "HOT BOX" MODELS 4 THROUGH 10 FOR RESPECTIVE SIZE DCDA SHALL BE MODIFIED TO FIT ABOVE HEIGHT REQUIREMENTS. VALVE STEM SHALL NOT BE ALLOWED TO EXTEND OUTSIDE OF BOX.
 3. HEATERS SHALL BE 2,000 WATT FOR 6" AND 8" SIZE. 3,000 WATT FOR 10".
 4. PROVIDE SPECIAL LOCK FOR 2 PADLOCKS.
 5. CONCRETE TO BE 2500 PSI MIX WITH AIR ENTRAINMENT.

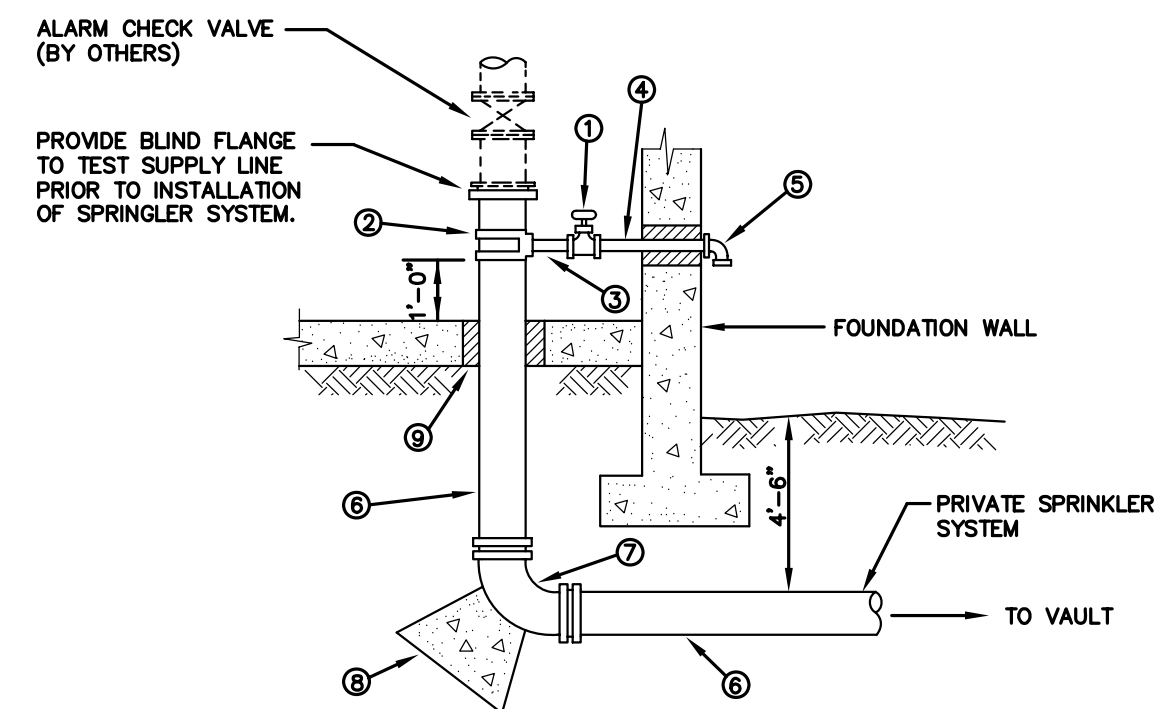
DOUBLE CHECK DETECTOR "HOT BOX" ENCLOSURE
NOT TO SCALE W-D18



NO.	DESCRIPTION
1	STATE APPROVED DOUBLE CHECK DETECTOR ASSEMBLY (DCDA) BACKFLOW PREVENTION ASSEMBLY WITH O.S.&Y. R.W. GATE VALVE
2	ROMAC STYLE 'FCA 501' FLANGED COUPLING ADAPTER
3	5/8" x 3/4" NEPTUNE T-10 METER WITH NEPTUNE PRO-READ SENSOR MOUNTED ON VAULT SURFACE OR HATCH: 6 WHEEL READING IN GALLONS.
4	LOCATE CENTER OF VALVE 15" FROM CENTER OF VAULT TO ALLOW STEMS TO EXTEND INTO ACCESS OPENING WHEN APPLICABLE
5	3/4" SHUTOFF VALVE; BRASS GATE VALVE
6	STATE APPROVED 3/4" DOUBLE CHECK VALVE ASSEMBLY (DCVA)
7	BRASS OR TYPE K COPPER, DETECTOR CHECK PIPING (BY PASS LINE)
8	2 EA. GALVANIZED ADJUSTABLE STANCHIONS (LOCATE AT ENDS OF DOUBLE CHECK ASSEMBLY)
9	GALVANIZED STEEL LADDER, LOCATE AS DIRECTED BY DISTRICT, SECURE TO VAULT.
10	PIPE SPOOL, CL. 52 D.J., PLAIN END
11	"UTILITY VAULT" OR APPROVED EQUAL WITH 4" BRICK AND ADJUSTABLE COVER: 2 ACCESS HATCHES: EXCEPT 3 HATCHES FOR 10" DCDA. LW PRODUCTS OR EQUAL, H-20 LOADING 4" DCDA, USE 575 LA + 57 AT (4'-2" x 6'-6" x 4'-0" INSIDE) 6" DCDA, 4484 LA + 57 AT (4'-4" x 8'-4" x 6'-2" INSIDE) 6" DCDA, 5106 LA + 57 AT (5'-0" x 10'-6" x 4'-4" INSIDE) 8" DCDA, 5106 LA + 57 AT (5'-0" x 10'-6" x 6'-2" OR 4'-4" INSIDE) 10" DCDA, 5106 LA + 5106 AT (3 HATCH) (5'-0" x 10'-6" x 8'-2" OR 4'-4")
12	8" PVC DRAIN, DISCHARGE TO DAYLIGHT OR TO CATCH BASIN. MINIMUM SLOPE 1% UNLESS OTHERWISE APPROVED. ADD SCREENS AT BOTH ENDS.
13	WATERTIGHT GROUT, INLET AND OUTLET PIPE, DRAIN PIPE AND BRICK ACCESS OPENING
14	SIGN READING "DANGER-PERMIT REQUIRED-CONFINED SPACE, DO NOT ENTER"

NOTE:
AFTER PRESSURE TEST AND PURITY SAMPLES ARE RECEIVED, A CERTIFIED BACKFLOW TECHNICIAN SHALL SUPPLY DISTRICT WITH A WRITTEN TEST REPORT ON EACH BACKFLOW ASSEMBLY.

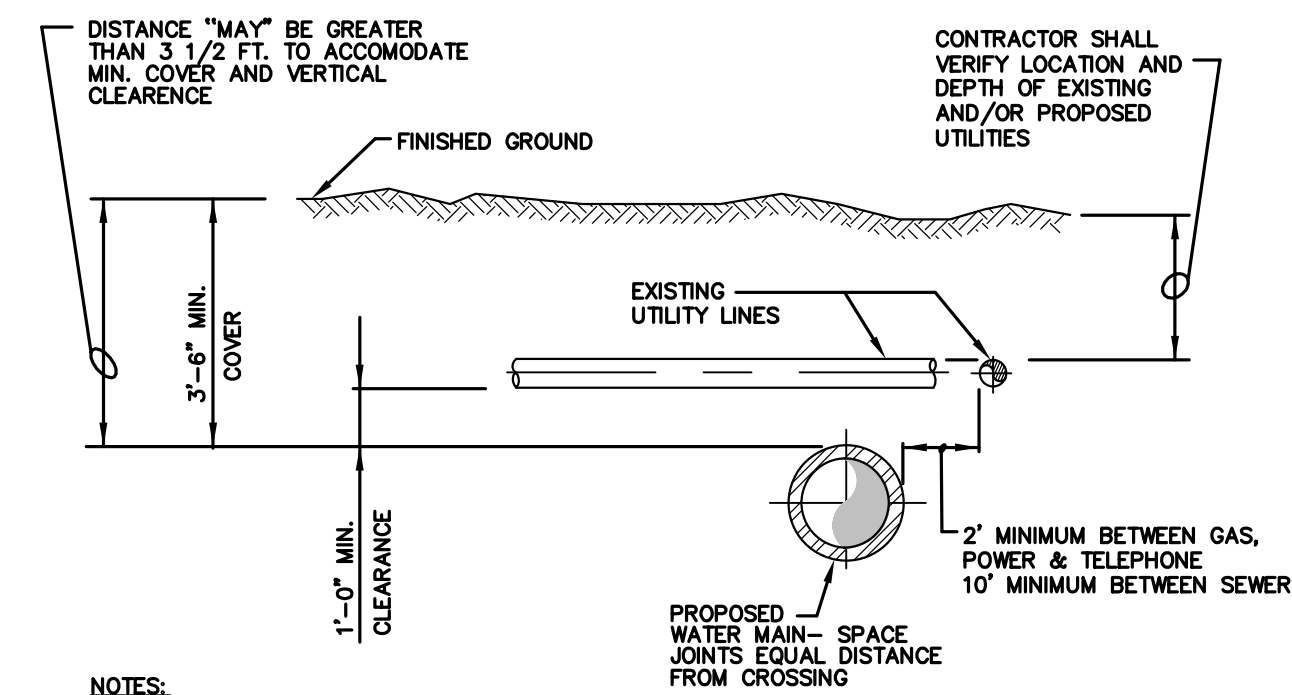
DOUBLE CHECK DETECTOR BACKFLOW PREVENTION ASSY.
NOT TO SCALE W-D19



No.	DESCRIPTION
1	2" RWGV OR BRONZE BALL VALVE
2	ROMAC STYLE 2025 STAINLESS STEEL DOUBLE STRAP SADDLE (OR APPROVED EQUAL)
3	2" BRASS NIPPLE
4	2" GALVANIZED NIPPLE
5	2" GALVANIZED 90° EL
6	D.I. CL. 52 SUPPLY MAIN (SIZE AS DETERMINED BY FIRE FLOW REQUIREMENTS)
7	90° BEND (MJ x MJ) WITH MEGALUG
8	CONCRETE THRUST BLOCK (SIZE TO BE APPROVED BY DISTRICT)
9	1/2" EXPANSION JOINT

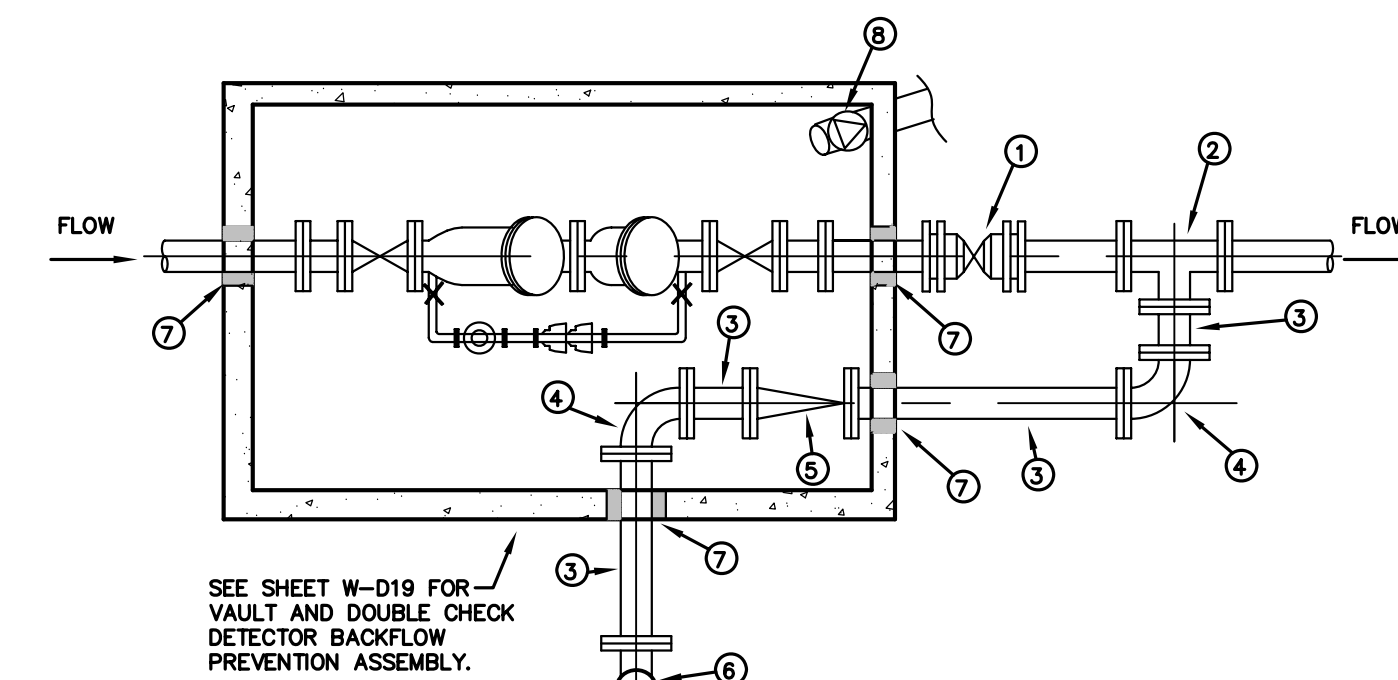
NOTE:
AFTER SYSTEM IS PRESSURE TESTED, PURITY SAMPLES SHALL BE TAKEN AT ALL RISERS IN SYSTEM.

RISER DETAIL
NOT TO SCALE W-D21



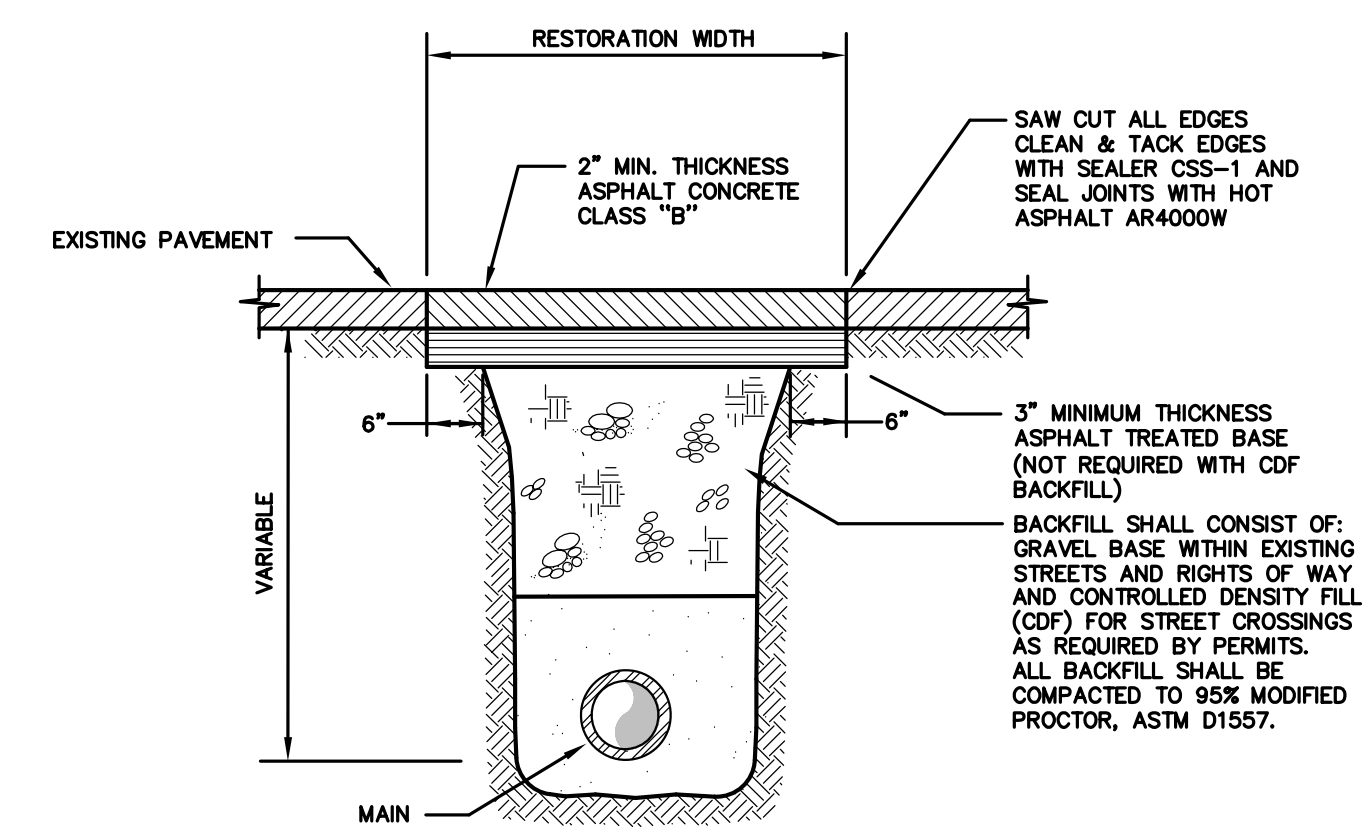
NOTES:
MINIMUM COVER SHOWN IS FOR 8" DIAMETER PIPE. SEE W-D1 FOR MINIMUM COVER FOR ALL PIPES.

TYPICAL UTILITY CROSSING
NOT TO SCALE W-D22



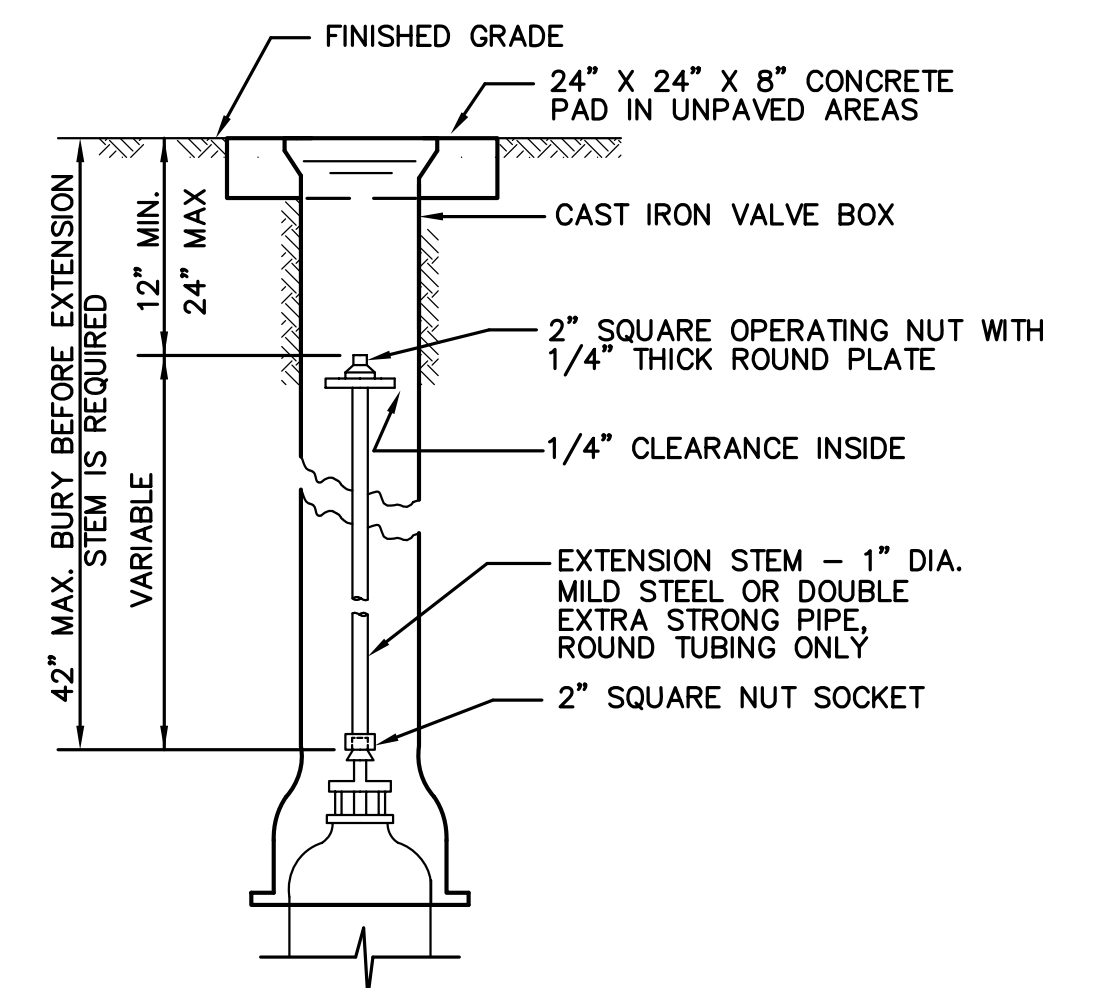
NO.	DESCRIPTION
1	POST INDICATOR VALVE, MJ WITH MEGALUGS
2	MAIN LINE SIZE X 4" TEE, MJ WITH MEGALUGS
3	4" DUCTILE IRON PIPE, CLASS 52
4	4" x 90° BENDS, MJ WITH MEGALUGS
5	4" FLAPPER CHECK VALVE WITH BALL CHECK DRAIN VALVE, MJ WITH MEGALUGS
6	FIRE DEPARTMENT CONNECTION, STORZ ADAPTER. CONNECTION TO COMPLY WITH FIRE DEPARTMENT REQUIREMENTS. 4" MUKILTEO & DIST. #1, 5" ELSEWHERE
7	WATERTIGHT GROUT
8	6" PVC DRAIN TO DAYLIGHT OR CB, MINIMUM SLOPE 1% SCREEN AT BOTH ENDS W/BACKWATER VALVE IN VAULT

FIRE LINE CONNECTION
NOT TO SCALE W-D20



- NOTES:**
1. ALL ASPHALT STREETS AND DRIVEWAYS SHALL BE TEMPORARILY REPAIRED WITH COLD MIX, EXCEPT CROSSINGS WITH CDF SHALL BE COVERED WITH STEEL PLATES UNTIL THE CDF HAS CURED TO ALLOW FOR PLACEMENT OF THE ASPHALT.
 2. PATCH SHALL BE MACHINE ROLLED FLUSH WITH EXISTING PAVEMENT AND SHALL BE PLACED PER SEC. 5-04 OF THE WA. STATE D.O.T. SPECIFICATIONS.

ASPHALT PAVEMENT REPAIR
NOT TO SCALE W-D23



VALVE EXTENSION STEM
NOT TO SCALE W-D24

Approved by: _____ Date _____
Mukilteo Water District
Mukilteo Water District Extension No. _____
Gray & Osborne No. _____

C18C
03002WA03.dwg



MUKILTEO WATER DISTRICT
7824 MUKILTEO SPEEDWAY MUKILTEO, WA.
(425) 355 - 3355 98275
STANDARD WATER DETAILS SHEET 3 OF 3
DATE: 6/03 APP'D KEE SCALE: NONE DWN: G&O