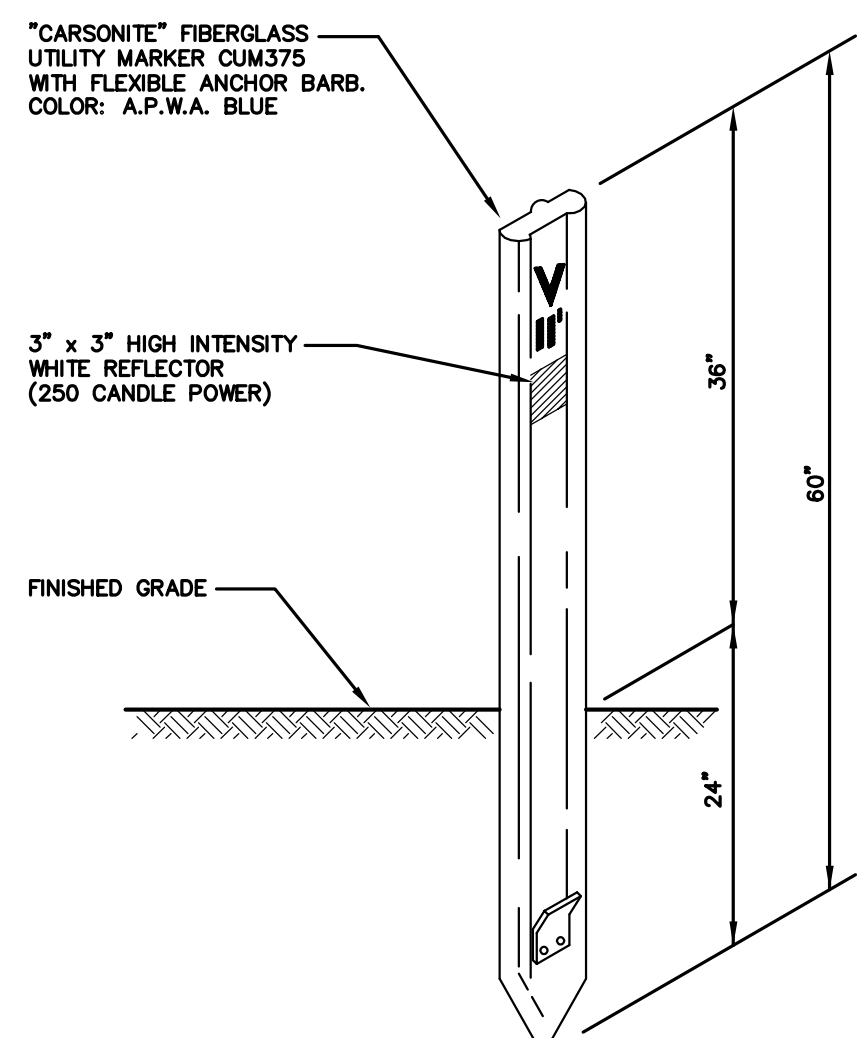


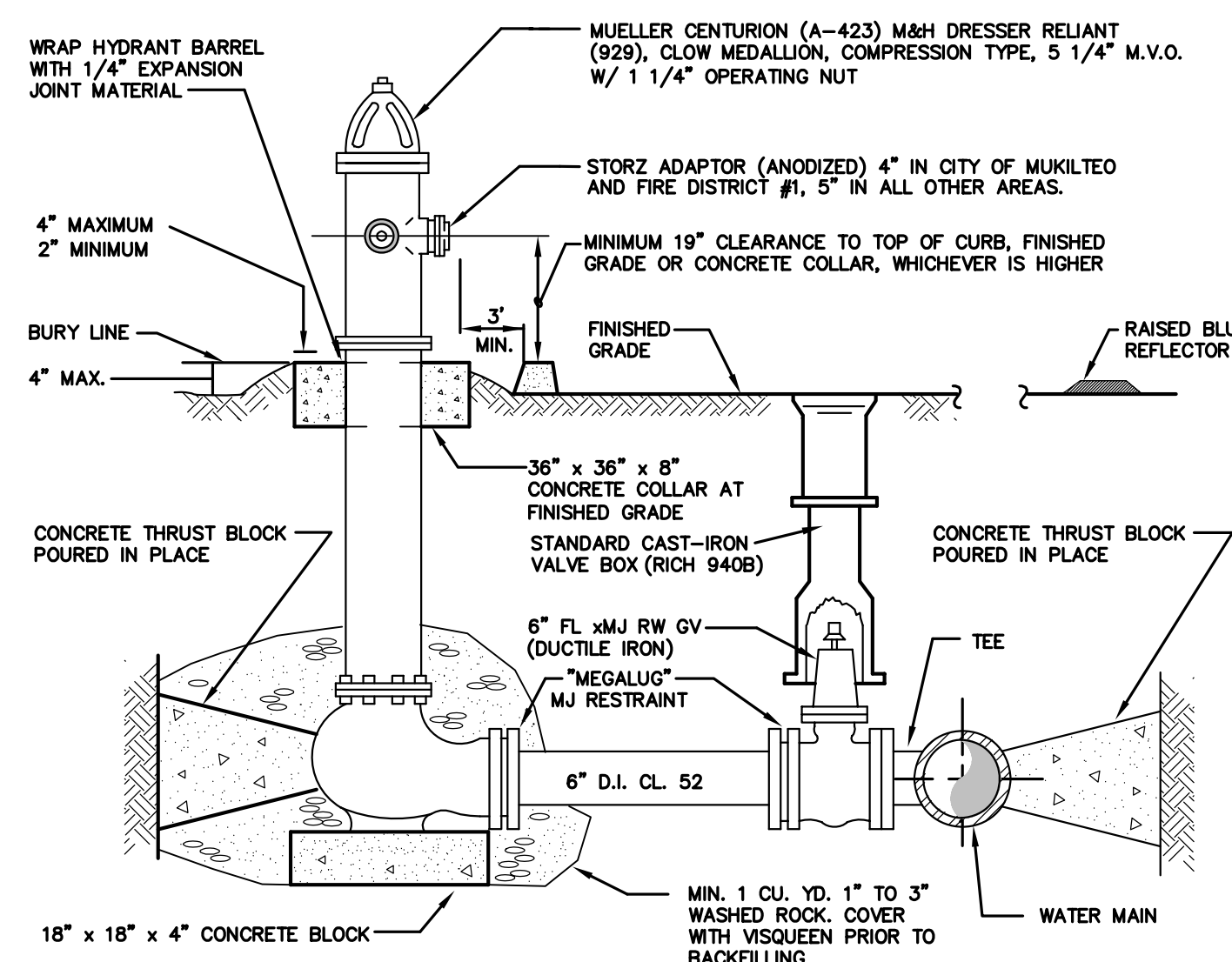
NOTES:
THE DEVELOPER SHALL PROVIDE THE DISTRICT WITH LABORATORY TEST RESULTS INDICATING COMPACTION OF THE TRENCH MEET THE REQUIREMENT OF 95% MODIFIED PROCTOR, ASTM D1557.

**WATER MAIN
TYPICAL TRENCH SECTION**
NOT TO SCALE W-D1



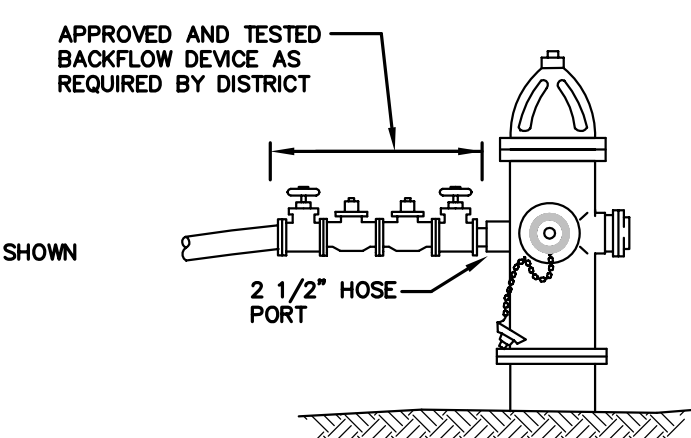
NOTES:
1. THE LETTER "V" AND THE DISTANCE IN FEET TO THE VALVE SHALL BE ON THE POST WITH 2" HIGH DECALS DESIGNED FOR USE ON FIBERGLASS BOATS.
2. EACH POST SHALL INCLUDE THE FOLLOWING DECAL:
"CAUTION WATER VALVE, BEFORE DIGGING, CALL 1-800-424-5555, UTILITY UNDERGROUND LOCATION CENTER."

VALVE MARKER
NOT TO SCALE W-D2



NOTES:
1. AFTER INSTALLATION, HYDRANT SHALL BE WIRE BRUSHED, PRIMED WITH PRESERVATIVE PAINT CO. ALL METAL GUARD II #28-6262-1 PRIMER & FIELD PAINTED WITH 2 COATS OF LUX-LIGHT CATERPILLAR YELLOW #43-616-1.
2. WHEN HYDRANT SPOOL EXCEEDS 18', USE FULL CIRCLE MJ REPAIR SLEEVE WITH 'MEGALUGS' OR FIELD LOK GASKETS.
3. HYDRANTS SHALL BE BREAK-AWAY TYPE IN WHICH VALVE WILL REMAIN CLOSED IF BARREL IS BROKEN.
4. PROVIDE MINIMUM 3'-0" CLEARANCE AND LEVEL AREA AROUND HYDRANT.
5. GUARD POSTS MAY BE REQUIRED BY THE DISTRICT. SEE GUARD POST DETAIL FOR ADDITIONAL REQUIREMENTS.
6. DISTANCE IN FEET TO THE VALVE BOX SHALL BE PLACED AT THE BARREL, BELOW THE PUMPER PORT, WITH 2" HIGH DECALS DESIGNED FOR USE ON FIBERGLASS BOATS.
7. RAISED BLUE REFLECTOR IN ACCORDANCE WITH THE FIRE DISTRICTS REQUIREMENTS

**FIRE HYDRANT
ASSEMBLY**
NOT TO SCALE W-D3

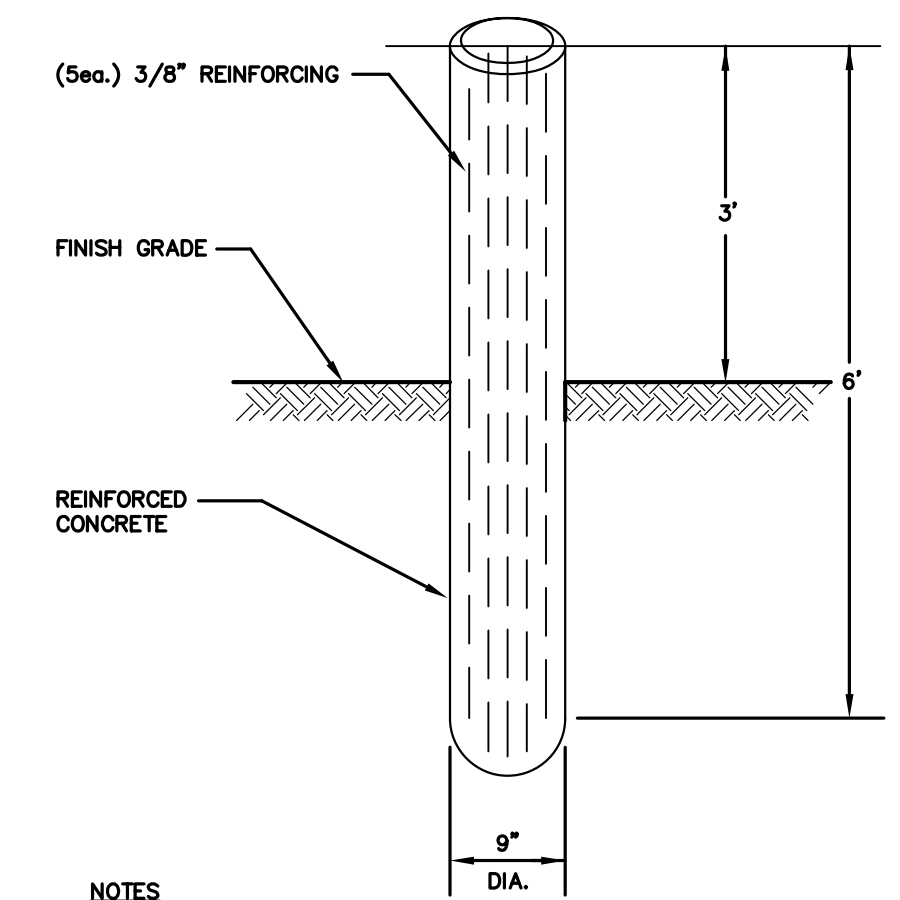


NOTE:
METER NOT SHOWN

HYDRANT USE PROCEDURES

1. THERE SHALL BE AN ACCEPTABLE WASHINGTON STATE APPROVED BACKFLOW DEVICE FURNISHED AND INSTALLED BY CONTRACTOR. A HYDRANT METER SHALL BE OBTAINED FROM DISTRICT. (NOT SHOWN ABOVE)
2. OPENING & CLOSING OF HYDRANT VALVE SHALL BE WITH AN ACCEPTABLE HYDRANT WRENCH.
3. THERE SHALL BE AN AUXILIARY VALVE ATTACHED TO THE 2 1/2" HOSE PORT OF THE HYDRANT.
4. THE HYDRANT VALVE SHALL BE FULLY OPENED AND THE WATER USE CONTROLLED EXCLUSIVELY BY THE AUXILIARY VALVE.
5. THE AUXILIARY VALVE SHALL BE OPERATED IN A SLOW MANNER TO PREVENT UNDUE EXCESSIVE PRESSURE ON THE WATER SYSTEM.
6. ANY VIOLATION OF ANY OF THE ABOVE SHALL BE SUBJECT TO A FINE.

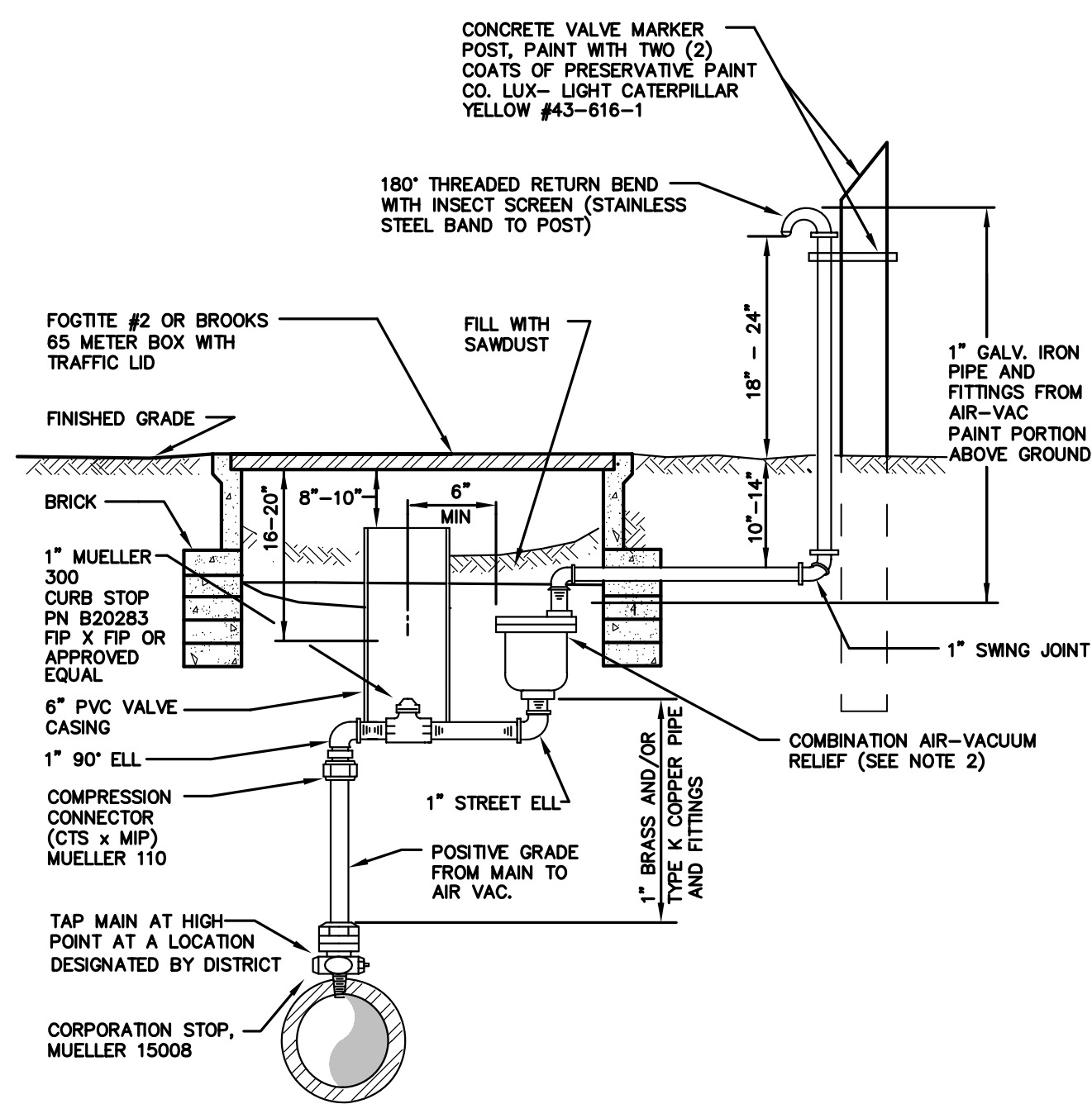
HYDRANT USE
NOT TO SCALE W-D4



NOTES

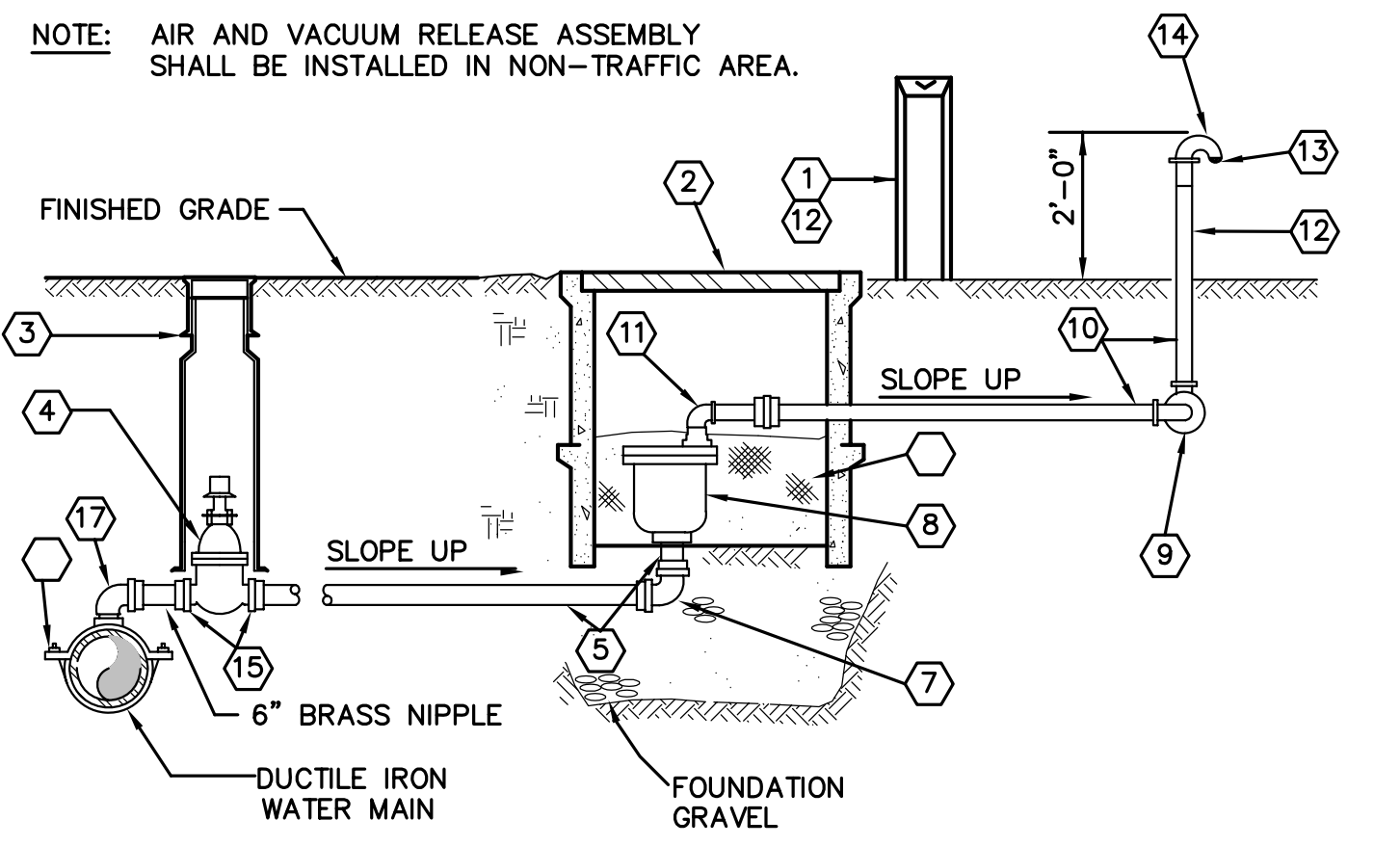
1. GUARD POSTS SHALL CONSIST OF REINFORCED 9" DIA. PRECAST UNIT.
2. THE NUMBER AND CONFIGURATION OF THE GUARD POSTS MAY BE 2, 3, OR 4 AND SHALL BE DETERMINED BY THE DISTRICT BASED ON FIELD CONDITIONS.
3. GUARD POSTS SHALL BE PAINTED WITH TWO (2) COATS OF PRESERVATIVE PAINT CO. LUX-LIGHT CATERPILLAR YELLOW #43-616-1 PAINT.

GUARD POST
NOT TO SCALE W-D5



NOTES:
1. AIR-RELIEF ASSEMBLY LOCATION SHALL BE AT ALL HIGH POINTS OF THE SYSTEM.
2. APPROVED COMBINATION AIR-VACUUM RELEASE ASS'YS:
a. CRISPEN UL-10
b. VALMATIC 201-C
c. APCO-143C

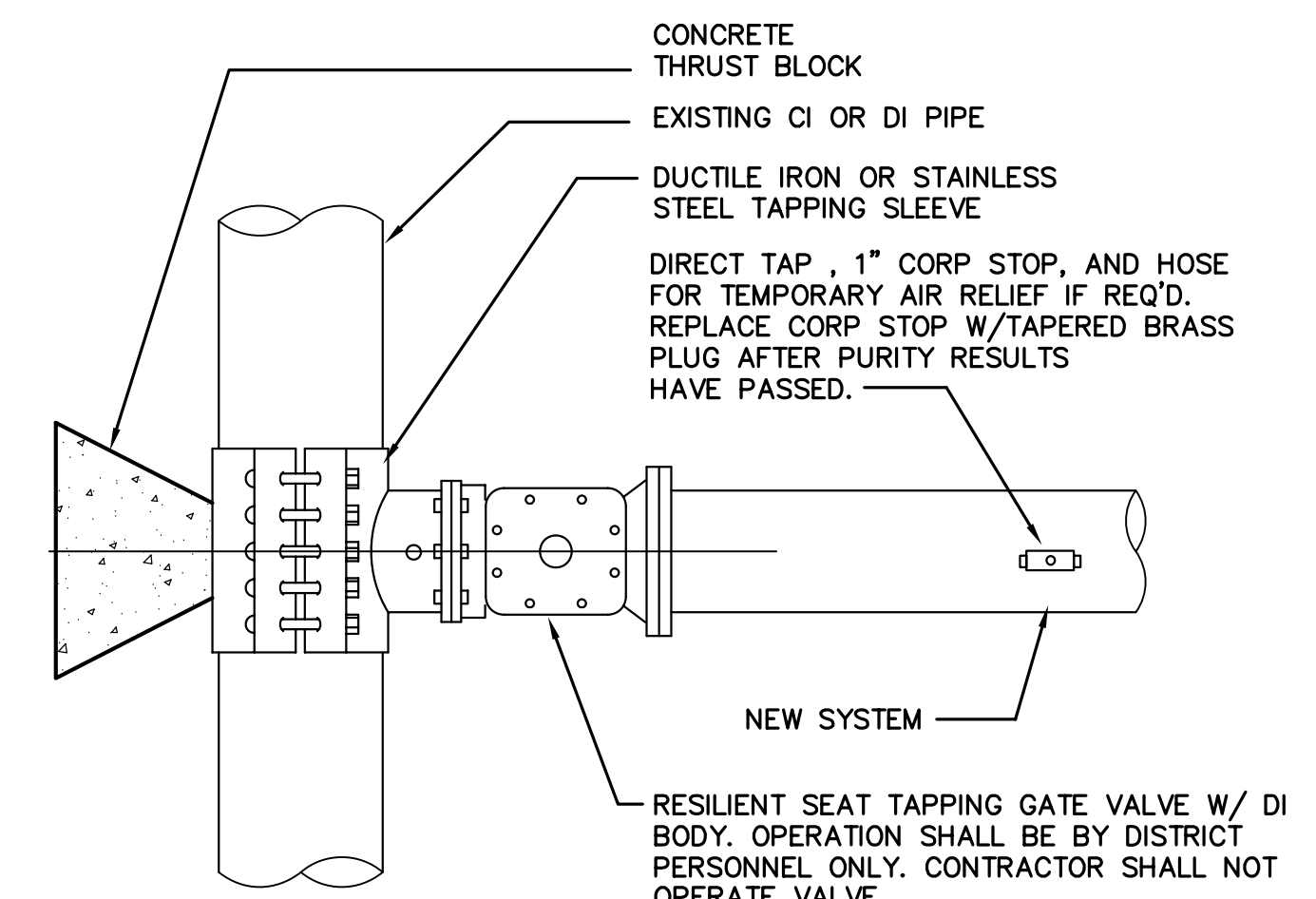
1" AIR RELEASE ASSEMBLY
NOT TO SCALE W-D6



- NOTE: AIR AND VACUUM RELEASE ASSEMBLY SHALL BE INSTALLED IN NON-TRAFFIC AREA.
- VALVE MARKER POST
 - CONC. METER BOX, FOGITTE # 2 OR BROOKS 65
 - CAST IRON VALVE BOX
 - 2" AWWA RESILIENT SEAT GATE VALVE THD X THD, WITH OPERATING NUT
 - 2" TYPE "K" COPPER TUBING
 - DOUBLE STRAP STAINLESS STEEL SERVICE CLAMP
 - 90° BEND MUELLER No. H-15526 COMPRESSION X COMPRESSION
 - 2" COMBINATION AIR & VACUUM RELEASE ASSEMBLY; A. APCO MODEL 144, B. CRISPEN MODEL CRAL 2, C. VALMATIC
 - 2, 2"x90" ELL, GALV.
 - 2" GALV. IRON PIPE (FIELD LOCATE NEXT TO EXISTING PROPERTY LINE).
 - 2"x90" ELL (GALV.)
 - PAINT PORTION ABOVE GROUND WITH TWO COATS OF PRESERVATIVE PAINT CO. LUX-LIGHT CATERPILLAR YELLOW #43-616 -1
 - 2" BEEHIVE STRAINER
 - 2" OPEN PATTERN RETURN BEND
 - STRAIGHT COUPLING, MUELLER No. H-15428 COMPRESSION TO M.I.P.
 - SAWDUST OR VERMICULITE
 - 90° BEND MUELLER No. H-10096 FEMALE X M.I.P.

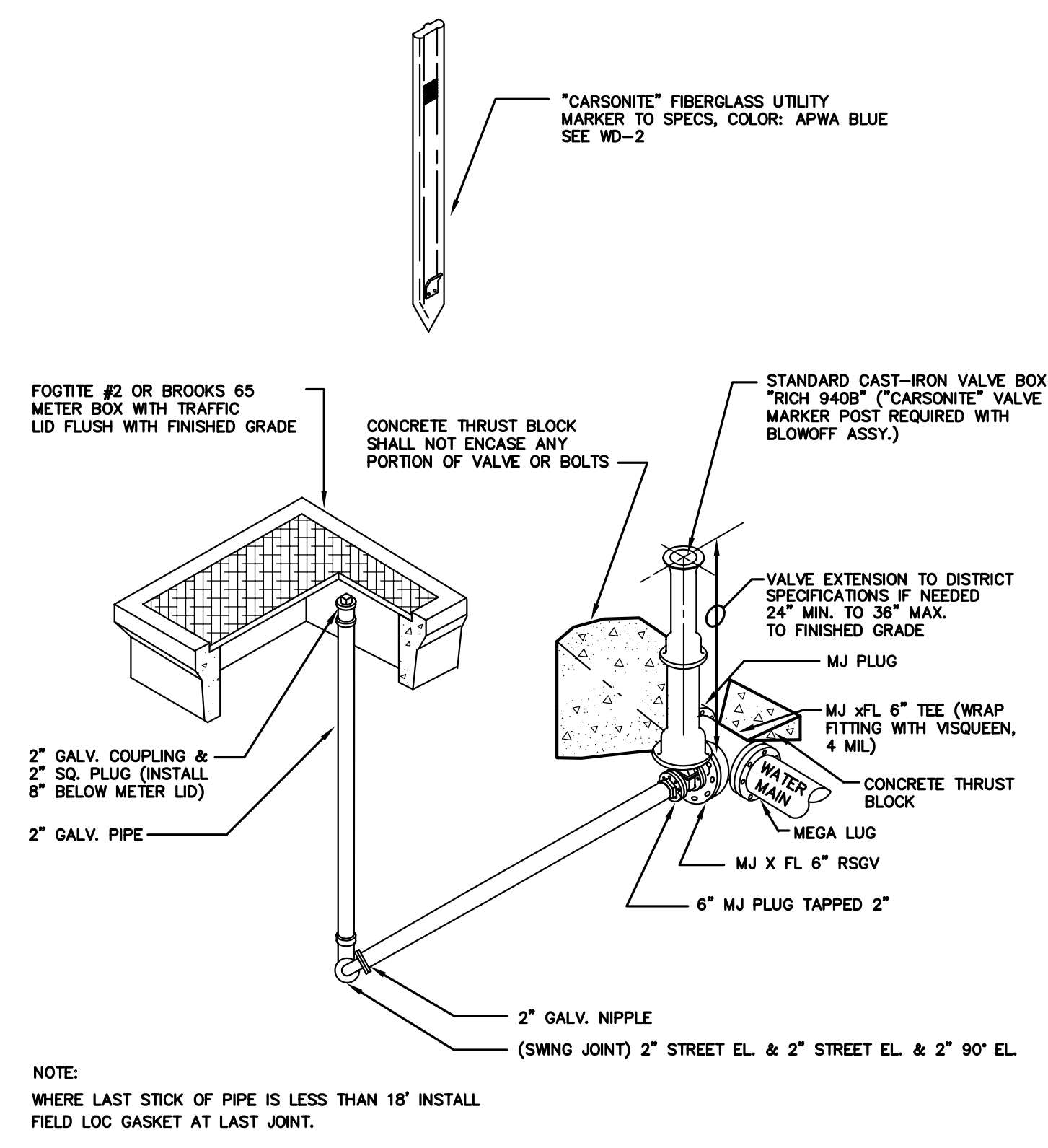
NOTES:
1. ALL PIPING BETWEEN DOUBLE STRAP SADDLE AND INLET SIDE OF COMBINATION AIR AND VACUUM ASSEMBLY SHALL BE COPPER OR BRASS
2. TAP WATER MAIN AT HIGH POINT, LOCATION TO BE DETERMINED BY THE DISTRICT

2" AIR RELEASE ASSEMBLY
NOT TO SCALE W-D7



NOTES:
1. SIZE-ON-SIZE TAPPING TEES SHALL BE STAINLESS STEEL FULL CIRCLE MECHANICAL SLEEVE.
2. DUCTILE IRON TAPPING TEES SHALL BE AT LEAST 2" SMALLER IN DIAMETER THAN THE EXISTING WATER MAIN AND SHALL BE EPOXY COATED.
3. TAPPING TEES SHALL BE PRESSURE TESTED TO 200 PSI
4. CONNECTIONS NOT ALLOWED ON FRIDAYS, HOLIDAYS, OR WEEKENDS

WET TAP CONNECTION
NOT TO SCALE W-D8



NOTE:
WHERE LAST STICK OF PIPE IS LESS THAN 18' INSTALL FIELD LOC GASKET AT LAST JOINT.

2" BLOWOFF ASSEMBLY
NOT TO SCALE W-D9

Approved by: _____
Mukilteo Water District Date _____
Mukilteo Water District Extension No. _____
Gray & Osborne No. _____

C18A
03002WA03.dwg

