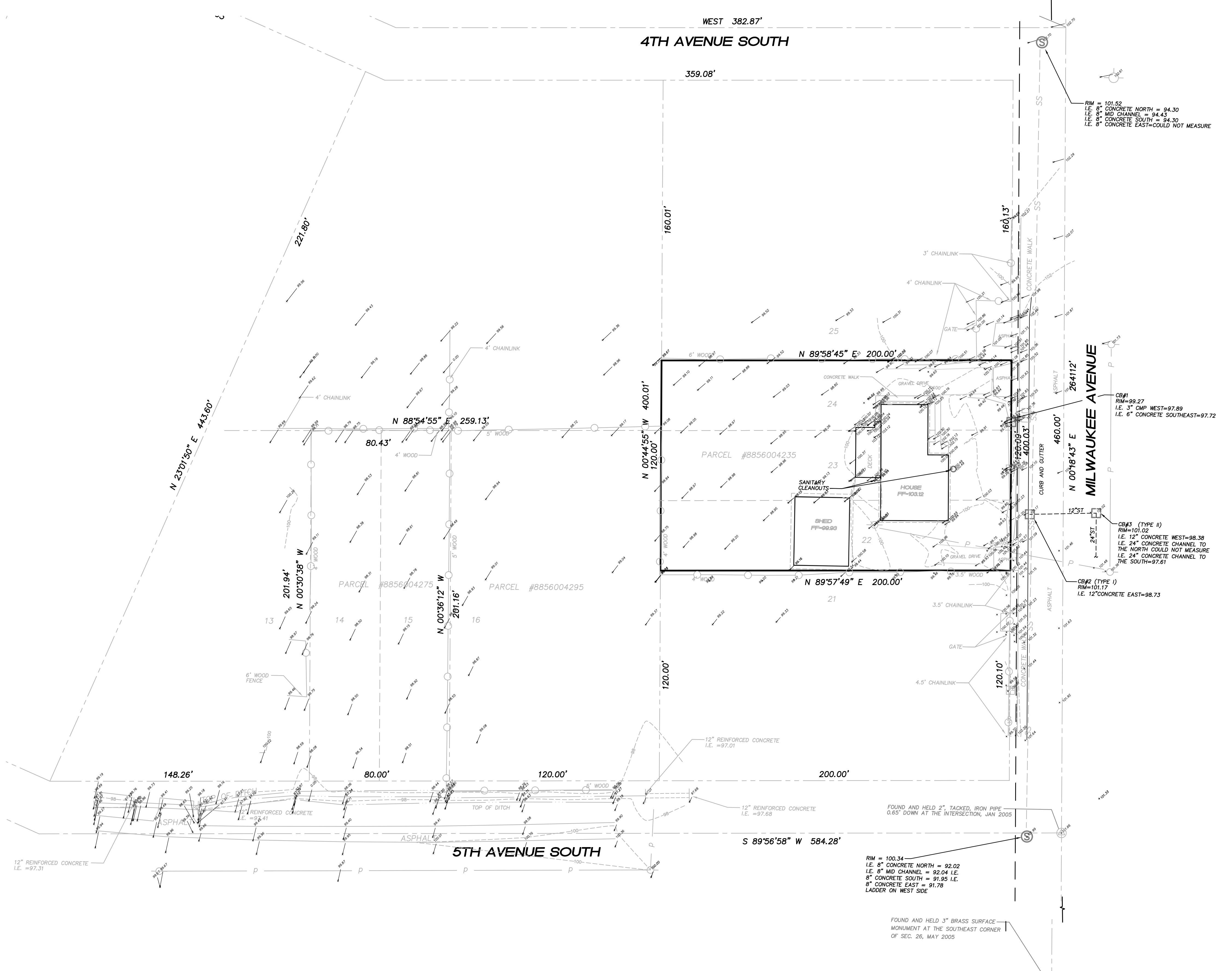


SECTION 26, TOWNSHIP 21 SOUTH, RANGE 4 EAST, W.M.

FOUND AND HELD 2" BRASS DISK
MONUMENT CASE AT THE EAST C
CORNER OF SEC. 26, MAY 2005



RIM = 101.52
I.E. 8" CONCRETE NORTH = 94.30
I.E. 8" MID CHANNEL = 94.43
I.E. 8" CONCRETE SOUTH = 94.30
I.E. 8" CONCRETE EAST = COULD NOT MEASURE

CB#1
RIM=99.27
I.E. 3" CMP WEST=97.89
I.E. 6" CONCRETE SOUTHEAST=97.72

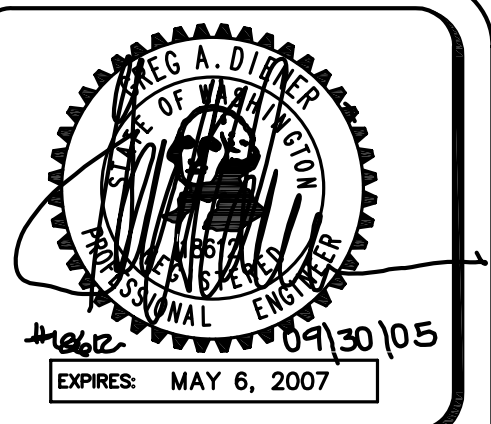
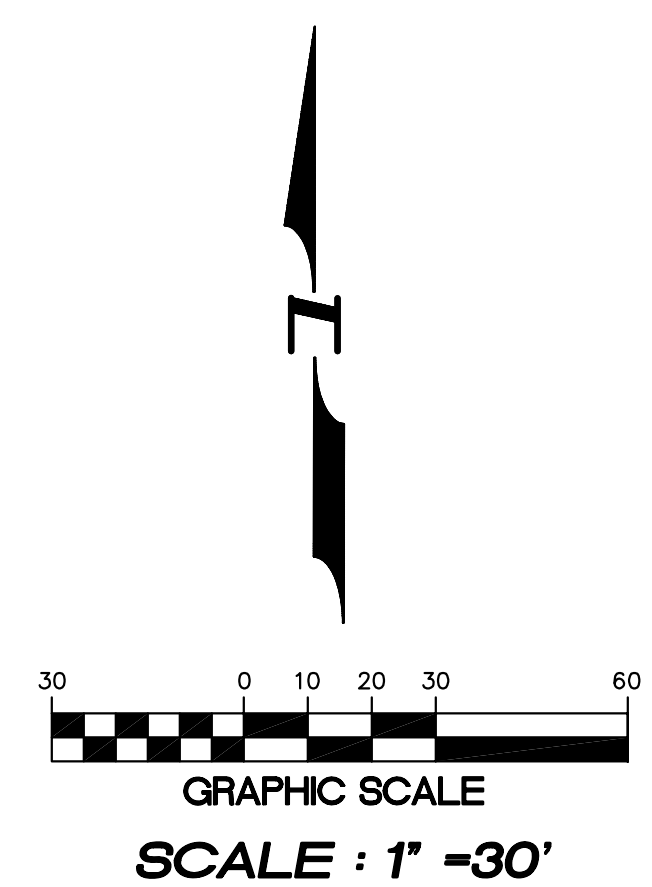
CB#3 (TYPE II)
RIM=101.02
I.E. 12" CONCRETE WEST=98.38
I.E. 24" CONCRETE CHANNEL TO
THE NORTH COULD NOT MEASURE
I.E. 24" CONCRETE CHANNEL TO
THE SOUTH=97.61

CB#2 (TYPE I)
RIM=101.17
I.E. 12" CONCRETE EAST=98.73

RIM = 100.34
I.E. 8" CONCRETE NORTH = 92.02
I.E. 8" MID CHANNEL = 92.04 I.E.
8" CONCRETE SOUTH = 91.95 I.E.
8" CONCRETE EAST = 91.78
LADDER ON WEST SIDE

FOUND AND HELD 2" TAPPED, IRON PIPE
MONUMENT AT THE INTERSECTION, JAN 2005
0.65' DOWN AT THE INTERSECTION, JAN 2005

FOUND AND HELD 3" BRASS SURFACE
MONUMENT AT THE SOUTHEAST CORNER
OF SEC. 26, MAY 2005



4180 LIND AVE. S.W.
RENTON, WA 98055
PHONE: (425) 251-8811
FAX: (425) 251-8880
WEB SITE: PACENG.COM

**Engineering
Design, LLC**
Civil Engineering and
Planning Consultants

SCHULER SHORT PLAT
CITY OF ALGONA, WA
FOR:
SMART HOMES
107 WASHINGTON
ALGONA, WA 99001
PHONE: (253) 855-7755, FAX: (253) 876-0560

PROJECT NO.: **05067**
DRAWN BY: **GLD**
ISSUE DATE: **09-30-05**
SHEET REV.:

EXISTING CONDITIONS

05067EXCOND01-C08.DWG
C08