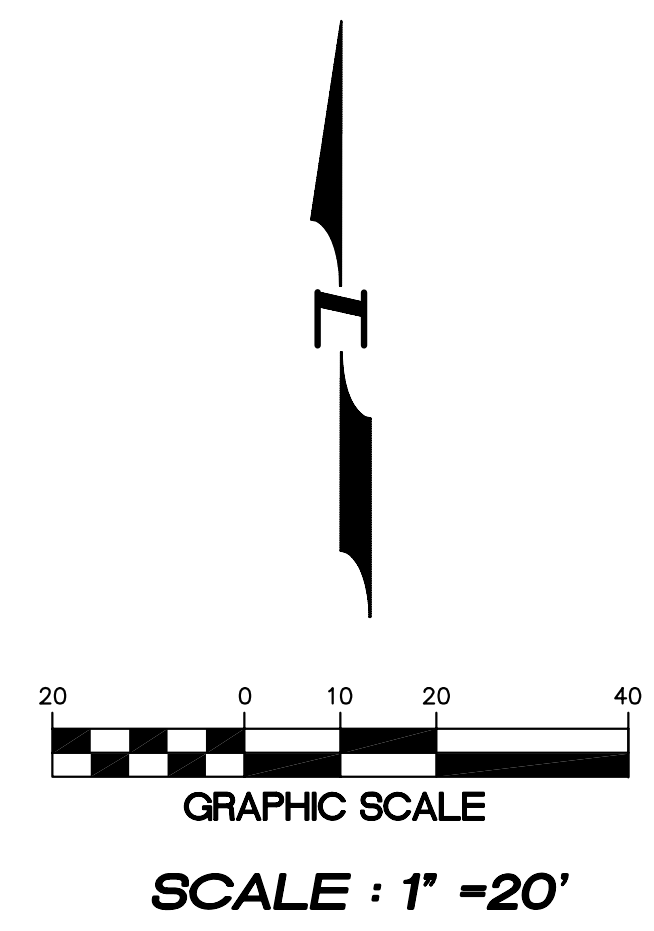
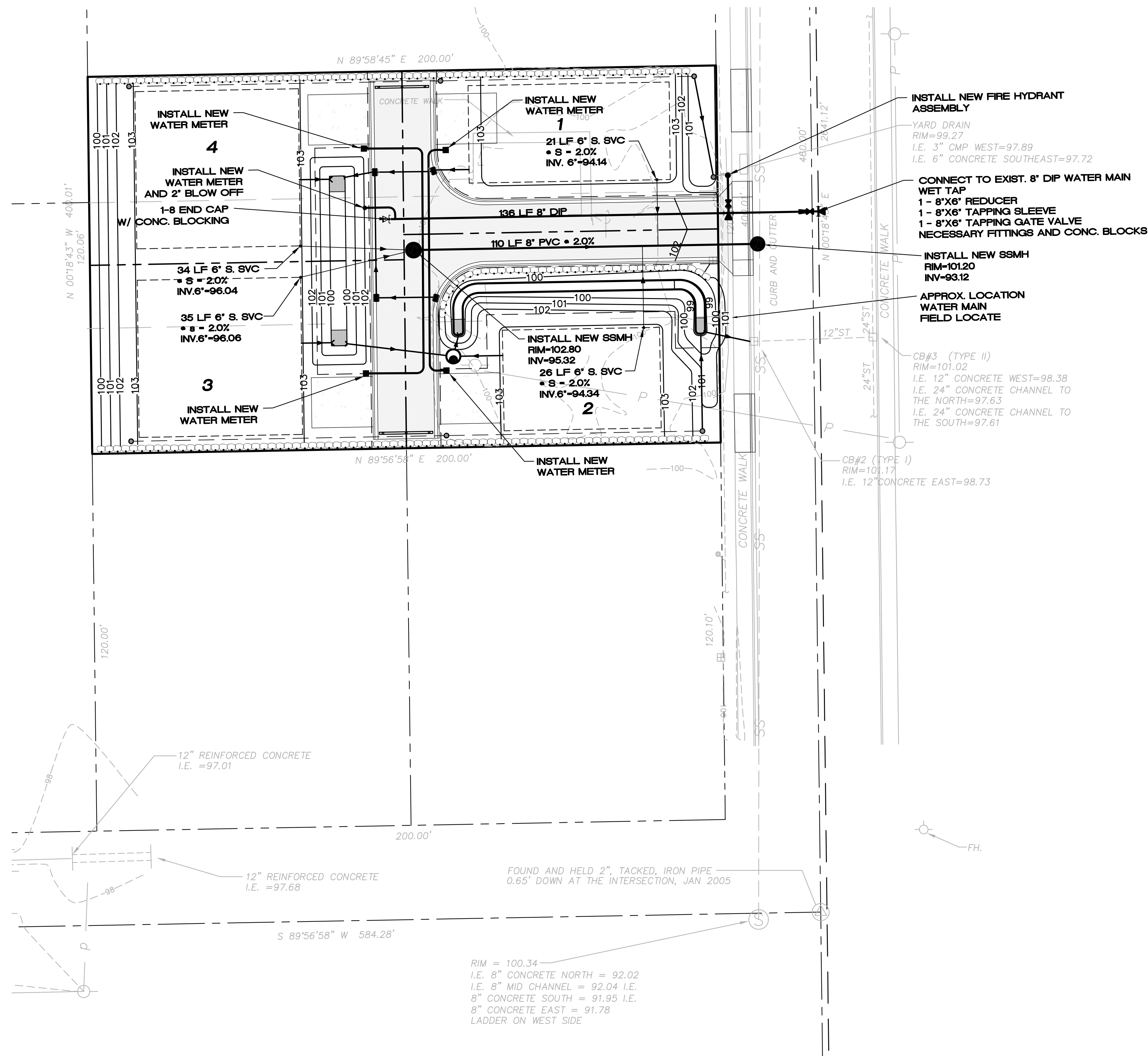


SECTION 26, TOWNSHIP 21 SOUTH, RANGE 4 EAST, W.M.

REVISIONS:



WATER LEGEND

- 90° BEND (MJ)
- CAP (MJ)
- 22 1/2° BEND (MJ)
- 8"x6"x8" TEE (MxFL)
W/CONC. BLKG.
PER COB STD. DETAIL W-1
5 1/4" MVO FIRE HYDRANT ASSEMBLY
PER COA STD. DETAIL FHA
- GATE VALVE (MJ)
- SINGLE WATER SERVICE
PER COB STD. DETAIL W-23 AND W-25
SEE NOTES 1 AND 2
- IRRIGATION METER BOX W/SETTER
PER COB STD. DETAIL W-27

WATER NOTES

1. ANY DEVIATIONS REGARDING THE WATER AND SEWER IMPROVEMENTS SHALL BE SUBMITTED TO THE CITY OF ALGONA, UTILITY DIVISION ENGINEER FOR APPROVAL PRIOR TO IMPLEMENTATION IN THE FIELD.
2. ALL WORK AND MATERIALS SHALL CONFORM TO THE STANDARD SPECIFICATIONS AND DETAILS OF THE CITY OF ALGONA. (DEVELOPMENT GUIDELINES AND PUBLIC WORKS STANDARDS, ADOPTED BY THE CITY OF ALGONA ORDINANCE NO. 829 DATED JUNE 3, 1997.)
3. THE CONTRACTOR SHALL BE RESPONSIBLE FOR LOCATING ALL EXISTING UNDERGROUND UTILITIES. CALL UNDERGROUND LOCATE SERVICE, 1-800-424-5555, FOR UTILITY MARKING.
4. NO WORK SHALL COMMENCE PRIOR TO A PRECONSTRUCTION CONFERENCE AT THE CITY OF ALGONA.
5. COORDINATE WITH LANDSCAPING IMPROVEMENTS. NO TREES SHALL BE PLANTED WITHIN 8 FEET OF WATER OR SEWER IMPROVEMENTS.

SANITARY SEWER LEGEND

- SANITARY SEWER MANHOLE W/ SS MAIN
- 6" INLINE SEWER CLEANOUT
- 6" BUILDING SEWER CLEANOUT

SEWER NOTES

1. ANY DEVIATIONS REGARDING THE WATER AND SEWER IMPROVEMENTS SHALL BE SUBMITTED TO THE CITY OF ALGONA, UTILITY DIVISION ENGINEER FOR APPROVAL PRIOR TO IMPLEMENTATION IN THE FIELD.
2. ALL WORK AND MATERIALS SHALL CONFORM TO THE STANDARD SPECIFICATIONS AND DETAILS OF THE CITY OF ALGONA. (DEVELOPMENT GUIDELINES AND PUBLIC WORKS STANDARDS, ADOPTED BY THE CITY OF ALGONA ORDINANCE NO. 829 DATED JUNE 3, 1997.)
3. THE CONTRACTOR SHALL BE RESPONSIBLE FOR LOCATING ALL EXISTING UNDERGROUND UTILITIES. CALL UNDERGROUND LOCATE SERVICE, 1-800-424-5555, FOR UTILITY MARKING.
4. NO WORK SHALL COMMENCE PRIOR TO A PRECONSTRUCTION CONFERENCE AT THE CITY OF ALGONA.
5. COORDINATE WITH LANDSCAPING IMPROVEMENTS. NO TREES SHALL BE PLANTED WITHIN 8 FEET OF WATER OR SEWER IMPROVEMENTS.
5. SIDE SEWERS SHALL HAVE A MINIMUM SLOPE OF 2%. 2. NEW SANITARY SEWER MAINS SHALL BE PLUGGED AND NOT PUT INTO SERVICE UNTIL LINES HAVE BEEN CLEANED, FLUSHED AND TESTED.

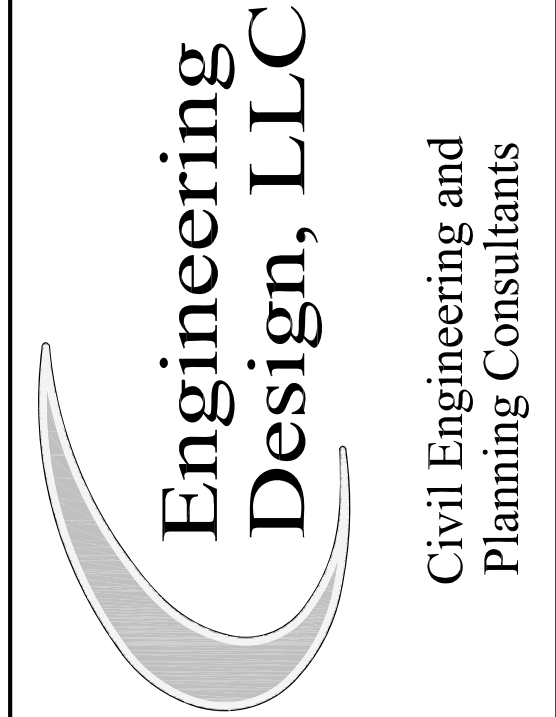
APPROVED FOR CITY OF ALGONA

BY _____ DATE _____
FIRM _____

**BURIED UTILITIES IN AREA
CALL BEFORE YOU DIG**
1-800-424-5555
EXISTING UTILITIES SHOWN ARE FROM
THE BEST AVAILABLE INFORMATION AND
NO GUARANTEE IS MADE AS TO THE
EXACT SIZE, TYPE, LOCATION OR DEPTH.



4180 LIND AVE. S.W.
RENTON, WA 98055
PHONE: (425) 251-8811
FAX: (425) 251-8880
WEB SITE: PACENG.COM



SCHULER SHORT PLAT
CITY OF ALGONA, WA

FOR:
SMART HOMES
107 WASHINGTON
ALGONA, WA 99001
PHONE: (253) 855-7755, FAX: (253) 876-0560

PROJECT NO.: **05067**
DRAWN BY: **GLD**
ISSUE DATE: **09-30-05**
SHEET REV.: **11-16-05**

**WATER AND
SEWER PLAN**

05067S01-C04.DWG
C04