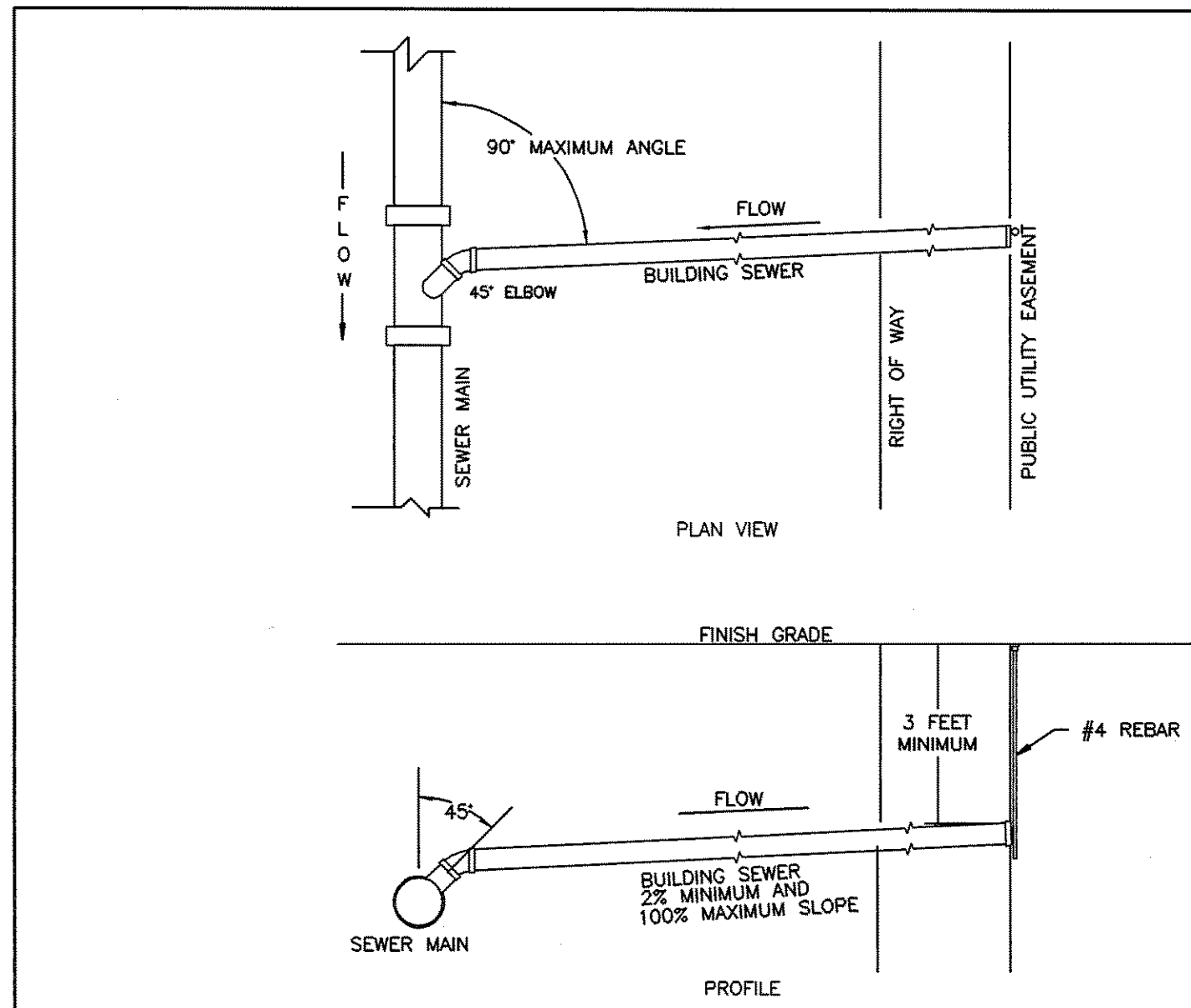
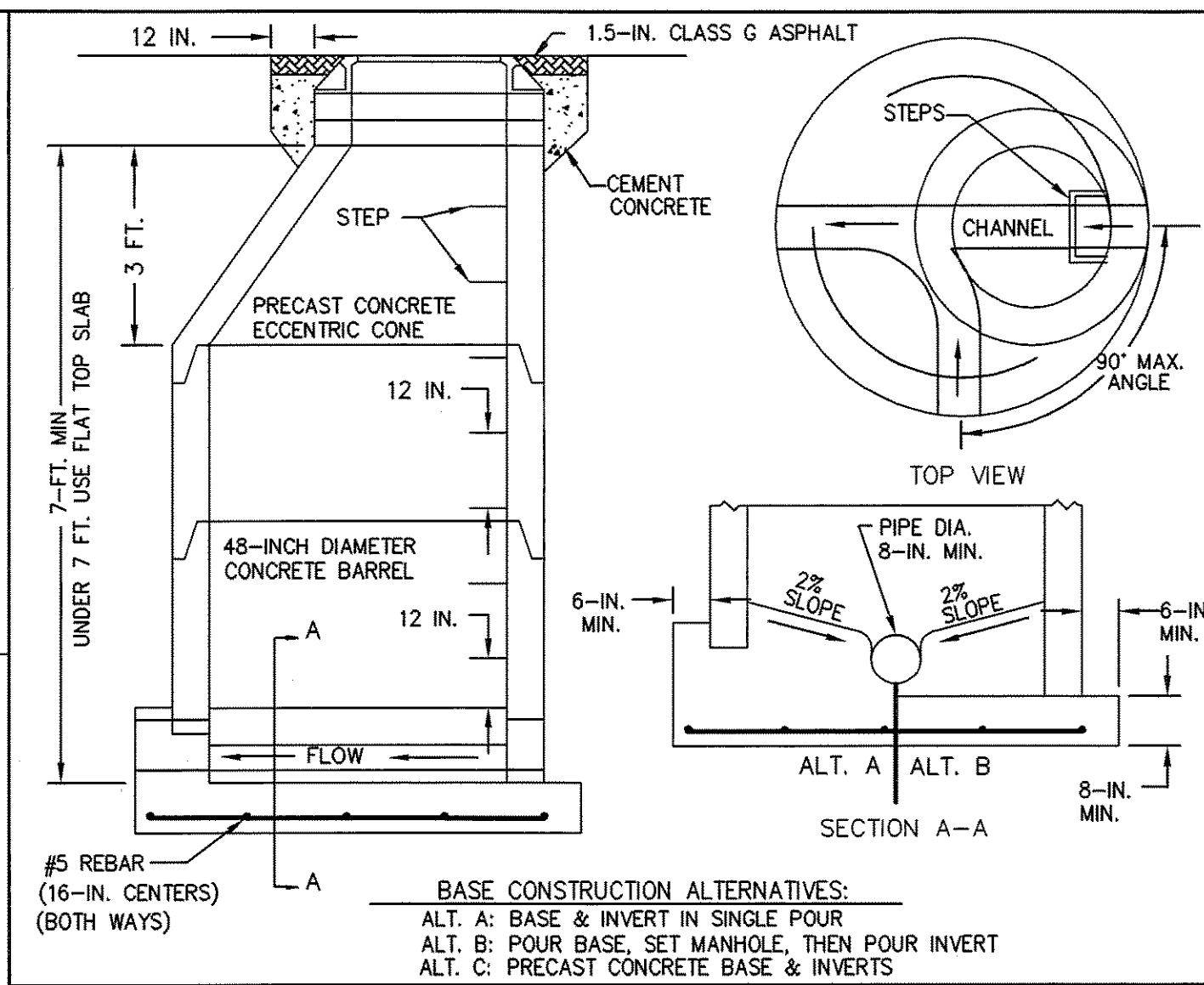


A PORTION OF SEC 15, TWP 21, RGE 26, W.M. GRANT COUNTY, WASHINGTON



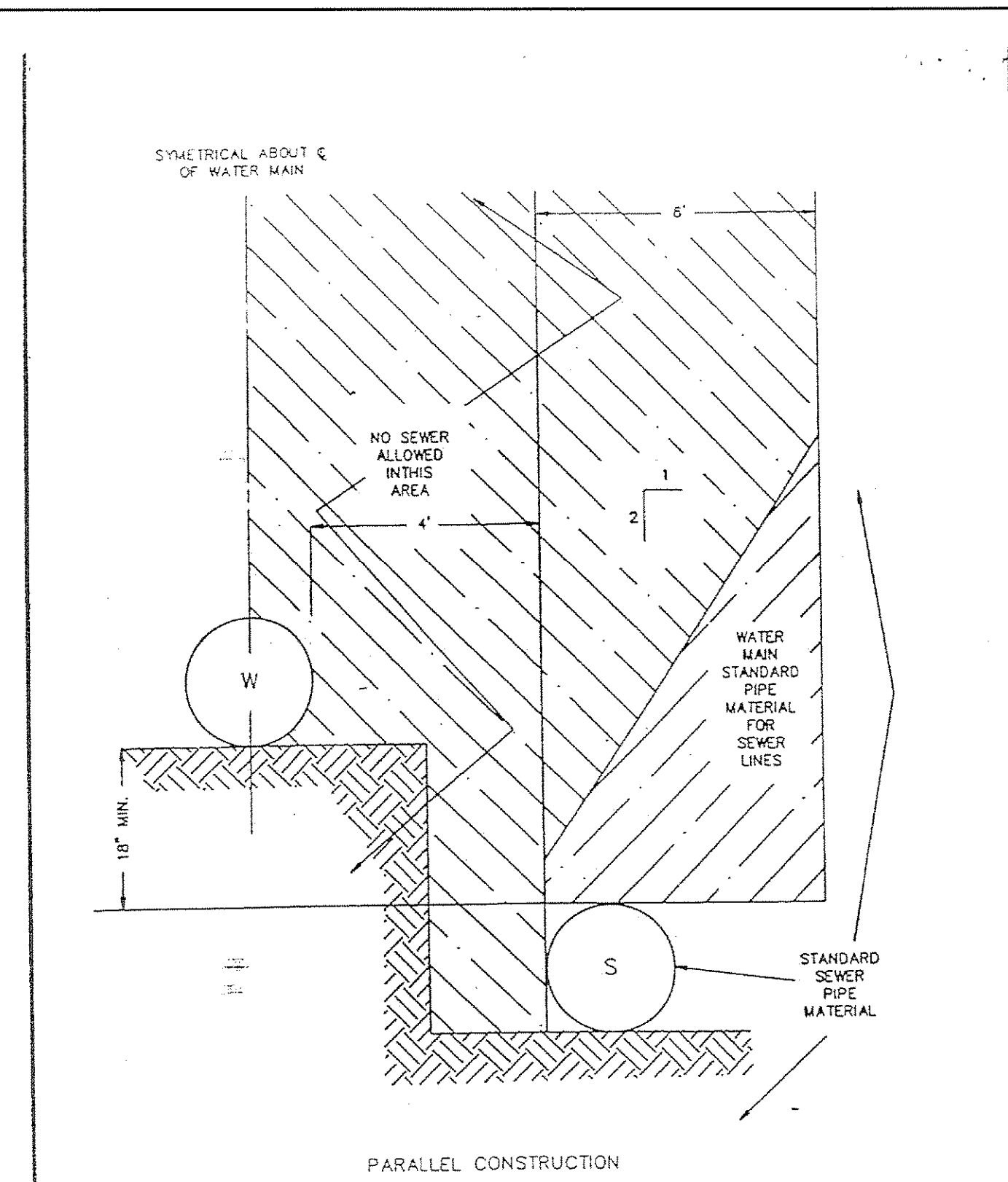
- NOTES:
1. IN-LINE GASKETED WYE SEWER FITTING SHALL BE USED ON NEWLY INSTALLED MAINS. GASKETED WYE SEWER SADDLE WITH STAINLESS STEEL CLAMPS SHALL BE USED ON EXISTING SEWER MAINS.
 2. THE END OF THE SERVICE LINE SHALL BE CAPPED.
 3. A RED CAP SHALL BE PLACED ON THE #4 REBAR MARKING THE END OF THE SERVICE LINE. THE RED CAP WILL BE SUPPLIED BY THE CITY.
 4. BUILDING SEWER CLEANOUTS ARE NOT ALLOWED WITHIN MUNICIPAL EASEMENTS OR RIGHT OF WAY.
 5. ALL CONSTRUCTION AND MATERIALS SHALL MEET THE SPECIFICATIONS AND BE APPROVED BY THE CITY OF EPHRATA.

SIDE SEWER			
EPHRATA PUBLIC WORKS DEPARTMENT			
CITY OF EPHRATA			
DATE	REVISION	BY	23



- NOTES:
1. STEPS TO BE CENTERED OVER THE MAIN INFLOW LINE.
 2. MINIMUM OF ONE 4-INCH ADJUSTMENT RING WITH A MAXIMUM OF 16 INCHES OF ADJUSTMENT.
 3. "SEWER" SHALL BE CAST IN ALL LIDS.
 4. MANHOLES NOT IN ASPHALT SHALL BE CENTERED IN A 6-FT. BY 6-FT. BY 6-IN. CONCRETE PAD AT FINISH GRADE. SLOPE CORNERS DOWN IN GRAVEL STREETS.
 5. ADJUST MANHOLE LIDS IN ASPHALT TO 1/4 INCH BELOW FINISH GRADE.
 6. PLACE FLEXIBLE GASKET BETWEEN BARREL SECTIONS, CONE, AND ADJUSTMENT RINGS.
 7. ALL OPEN JOINTS AND PICK HOLES SHALL BE FILLED WITH NON-SHRINK GROUT AND FINISHED TO A SMOOTH SURFACE.
 8. ENTRY COUPLINGS OR SAND COLLARS REQUIRED WHERE SEWER MAINS ENTER AND EXIT THE MANHOLE.
 9. MANHOLE BASE SHALL BE ON UNDISTURBED OR COMPACTED EARTH.
 10. ALL MANHOLES, STEPS, RING AND COVER, AND GASKETS SHALL BE PER SECTIONS 9.04.4(1), 9.05.15(1), AND 9.12.4.
 11. ALL CONSTRUCTION AND MATERIALS SHALL MEET THE SPECIFICATIONS AND BE APPROVED BY THE CITY OF EPHRATA.

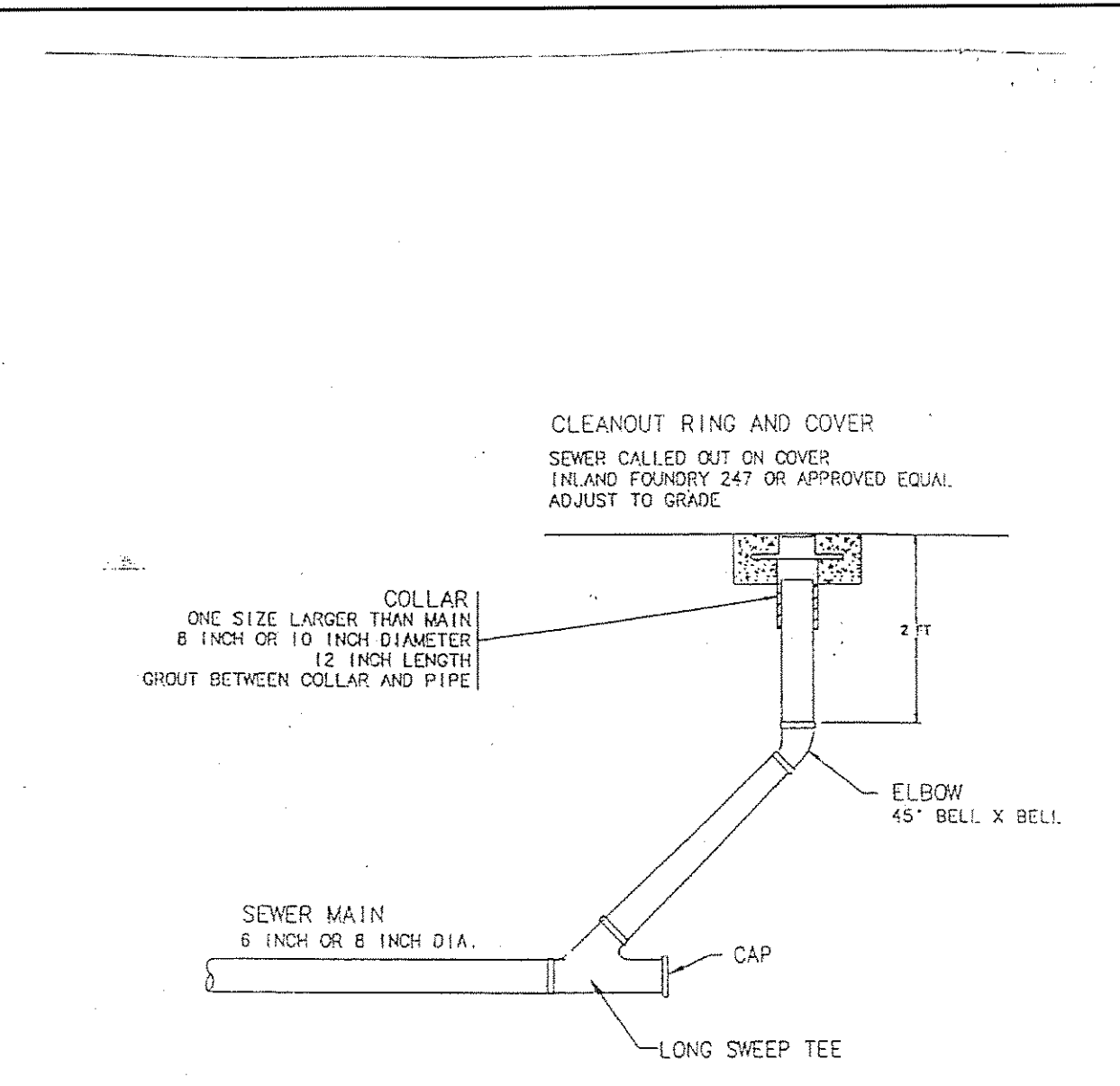
SEWER MANHOLE			
EPHRATA PUBLIC WORKS DEPARTMENT			
CITY OF EPHRATA			
DATE	REVISION	BY	24



NOTE: ONLY THE LATEST DETAIL, AS APPROVED BY THE CITY ENGINEER, SHALL BE USED.

Orig.	3-7-99		
Revision	Date	Description	By

W/S - 1 - STANDARD DETAIL WATER/SEWER SEPARATION



NOTE: BED IN SAND AND BACKFILL WITH 95% COMPACTION.

S-5 SEWER CLEANOUT DETAIL



4180 LIND AVE. S.W.
RENTON, WA 98055
PHONE: (425) 251-8811
FAX: (425) 251-8880
WEB SITE: PACENG.COM

Pacific Engineering Design, LLC
Civil Engineering and Planning Consultants

PRAIRIE RIDGE
CITY OF EPHRATA, WA
FOR: SMART HOMES
107 WASHINGTON
ALGONA, WA 98001
PHONE: (253) 863-7756, FAX: (253) 876-0550

PROJECT NO.: 05055
DRAWN BY: TLR
ISSUE DATE: 08-24-05
SHEET REV.:

SEWER DETAILS

050550TL04-SEWER.DWG
C08