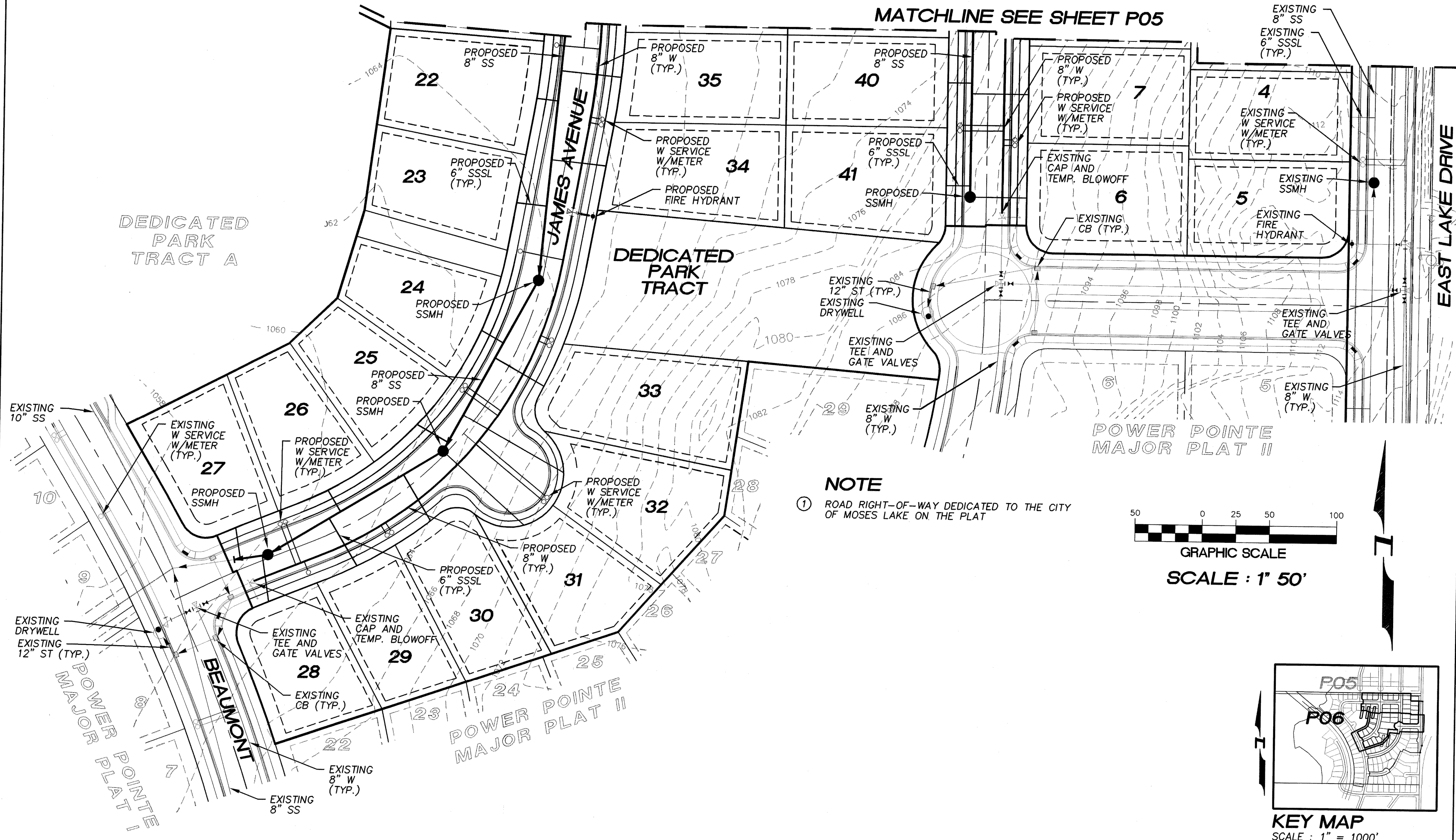


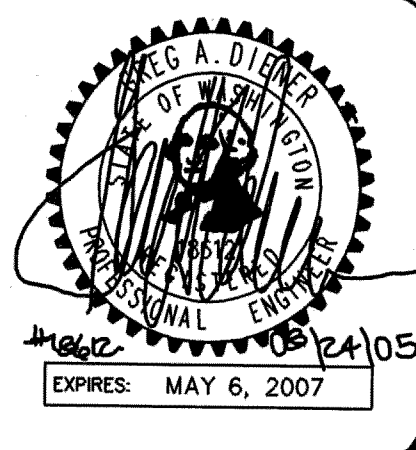
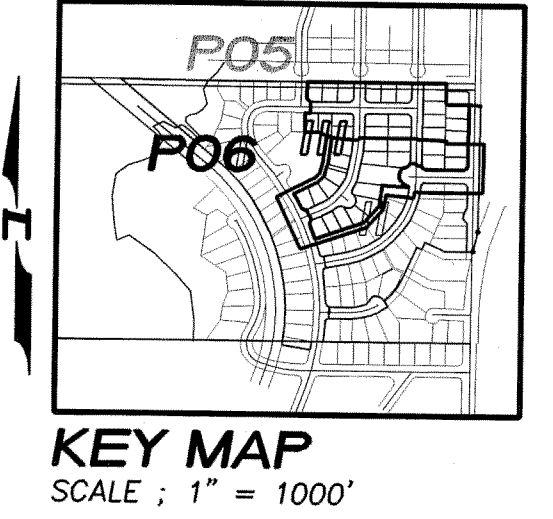
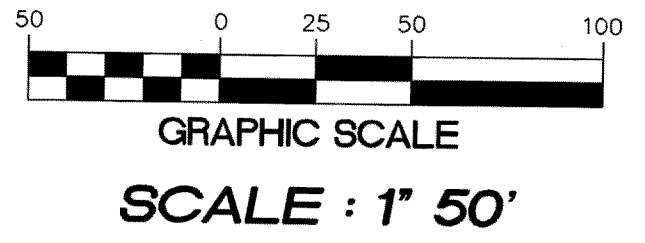
REVISIONS:

# A PORTION OF SEC 27, TWP 19 N., RGE 28 E., W.M. GRANT COUNTY, WASHINGTON

MATCHLINE SEE SHEET P05



**NOTE**  
 ① ROAD RIGHT-OF-WAY DEDICATED TO THE CITY OF MOSES LAKE ON THE PLAT



**Pacific Engineering Design, LLC**  
 Civil Engineering and Planning Consultants

4180 LIND AVENUE S.W.  
 RENTON, WA 98055  
 PHONE: (425) 251-8811  
 FAX: (425) 251-8880  
 WEB SITE: PACENG.COM

## POWER POINTE MAJOR PLAT III

CITY OF MOSES LAKE, WA

FOR:  
 SMART HOMES  
 107 WASHINGTON  
 ALGONA, WA 98001  
 PHONE: (253) 833-7755. FAX: (253) 876-0530  
 E-MAIL: SMARTHOMES108@COMCAST.NET

### PRELIMINARY PLAT POWER POINTE COMPOSITE UTILITY PLAN

PROJECT NO.: **05065**  
 DRAWN BY: **JGC**  
 ISSUE DATE: **08-24-05**  
 SHEET REV.:

05065CU02-PHASE-III-P06.DWG  
**P06**