

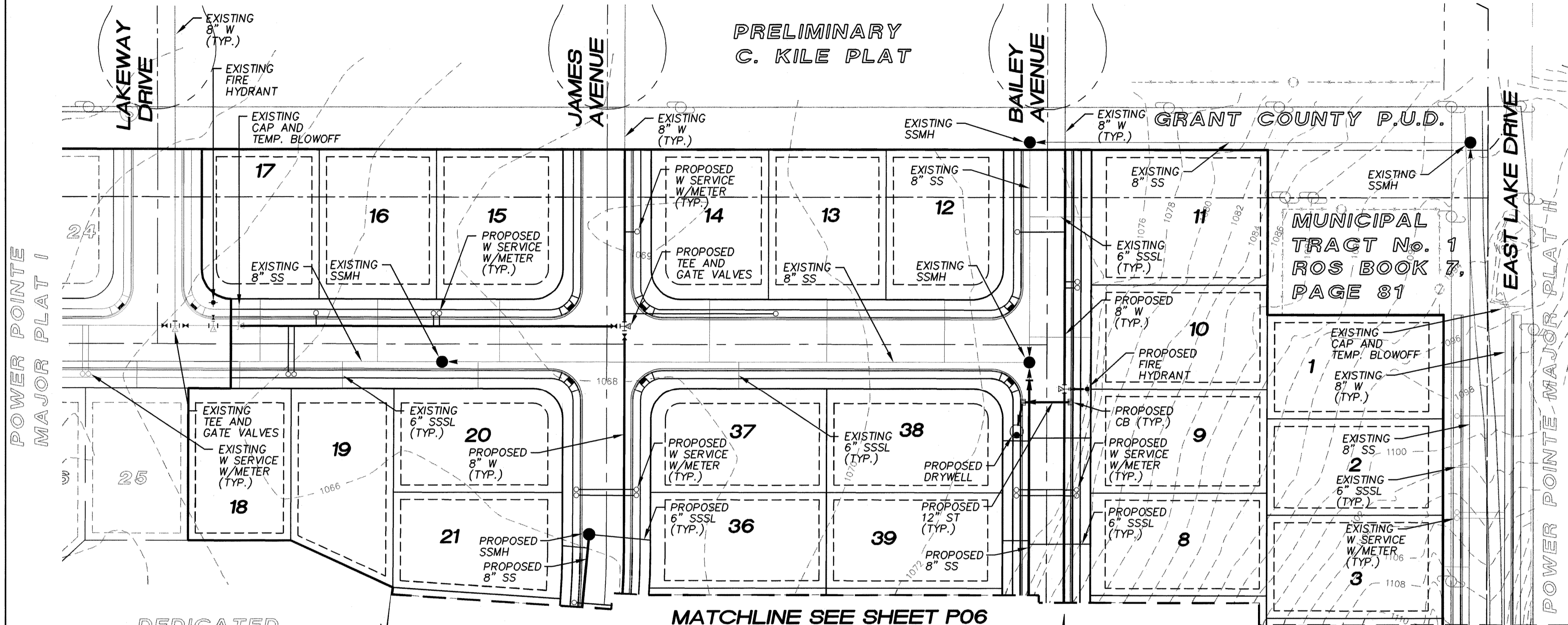
REVISIONS:

A PORTION OF SEC 27, TWP 19 N., RGE 28 E., W.M. GRANT COUNTY, WASHINGTON

NOTE

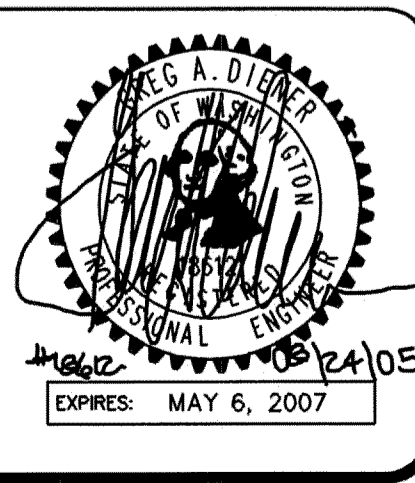
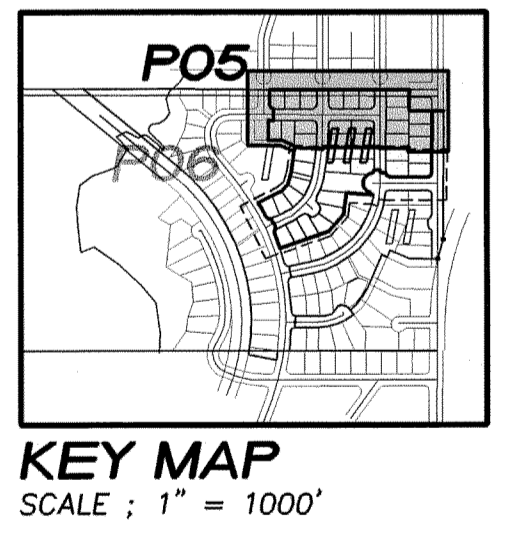
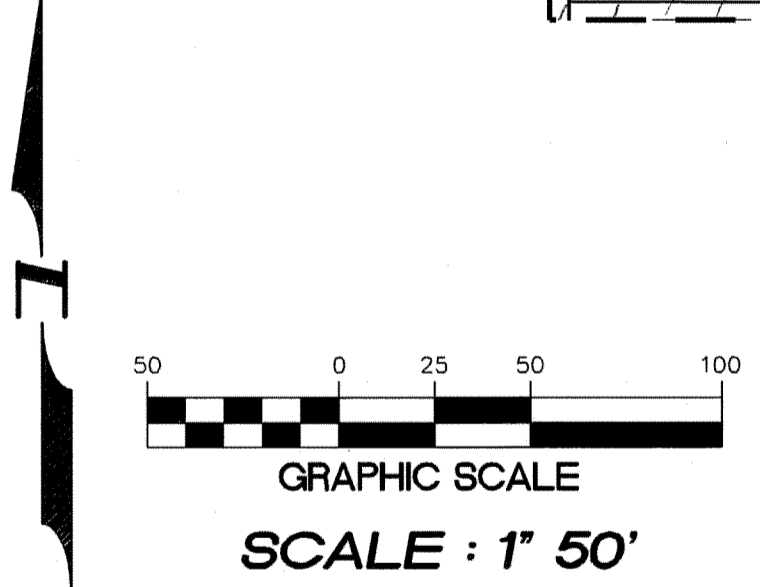
- ① ROAD RIGHT-OF-WAY DEDICATED TO THE CITY OF MOSES LAKE ON THE PLAT

PRELIMINARY C. KILE PLAT



DEDICATED
PARK
TRACT A

MATCHLINE SEE SHEET P06



**Pacific
Engineering
Design, LLC**

Civil Engineering and
Planning Consultants

4180 LIND AVENUE S.W.
RENTON, WA 98055
PHONE: (425) 251-8811
FAX: (425) 251-8880
WEB SITE: PACENG.COM

POWER POINTE MAJOR PLAT III

CITY OF MOSES LAKE, WA

FOR:
SMART HOMES
107 WASHINGTON
ALGONA, WA 98001
PHONE: (253) 833-7755 FAX: (253) 876-0530
E-MAIL: SMARTHOMES108@COMCAST.NET

PRELIMINARY PLAT POWER POINTE COMPOSITE UTILITY PLAN

PROJECT NO.: **05065**
DRAWN BY: **JGC**
ISSUE DATE: **08-24-05**
SHEET REV.:

05065CU01-PHASE-III-P05.DWG
P05