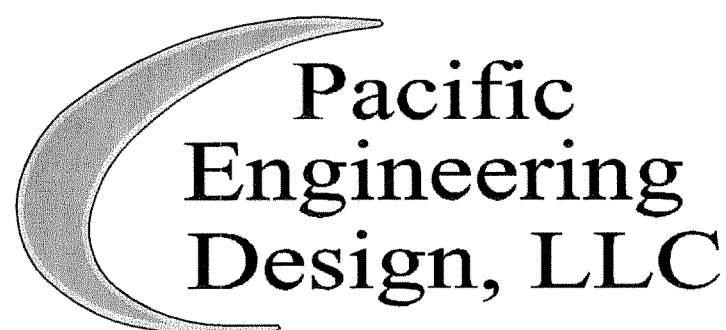
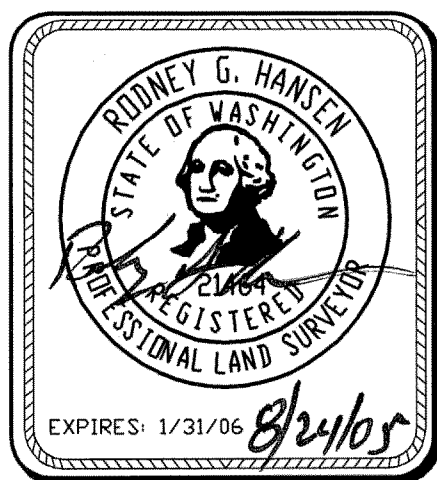
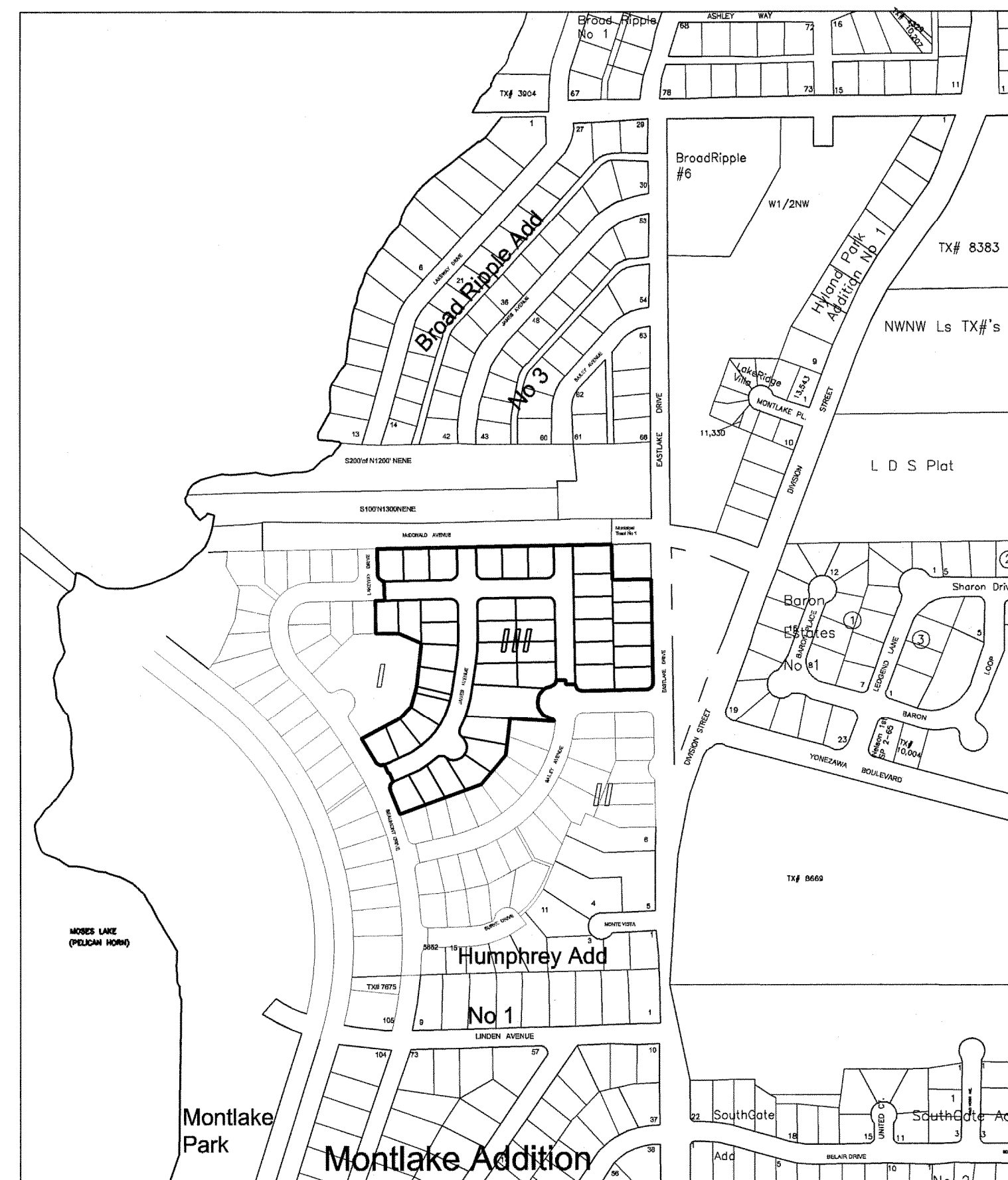


# A PORTION OF SEC 27, TWP 19 N., RGE 28 E., W.M. GRANT COUNTY, WASHINGTON

## LEGEND

- ⊕ FOUND MONUMENT AS NOTED
- SET 5/8" REBAR W/PLASTIC CAP, P.L.S. 21651 UNLESS OTHERWISE NOTED, DATE :
- △ CALCULATED POINT ONLY
- U.S.B.R. = UNITED STATES BUREAU OF RECLAMATION
- PLATS OF HUMPHREY ADDITION BOOK 7, PAGE 41, AND HUMPHREY ADDITION PLAT ALTERATION BOOK 14, PAGE 52
- PLAT OF MONTLAKE ADDITION NO. 1 BOOK 5, PAGE 45
- MUNICIPAL TRACT No. 1 ROS BOOK 7, PAGE 81
- PLAT BOUNDARY
- - - SECTION LINE
- - - SECTION BREAK LINE



Civil Engineering and Planning Consultants

4180 LIND AVENUE S.W.  
RENTON, WA 98055  
PHONE: (425) 251-8811  
FAX: (425) 251-8880  
WEB SITE: PACENG.COM

### POWER POINTE MAJOR PLAT III

CITY OF MOSES LAKE, WA

FOR:  
SMART HOMES  
107 WASHINGTON  
ALGONA, WA 98001  
PHONE: (253) 833-7755, FAX: (253) 876-0530  
E-MAIL: SMARTHOMES108@COMCAST.NET

### PRELIMINARY PLAT POWER POINTE VICINITY MAP

PROJECT NO.: **05065**  
DRAWN BY: **JGC**  
ISSUE DATE: **08-24-05**  
SHEET REV.:

05065HC04-PHASE-III-P04.DWG

# P04