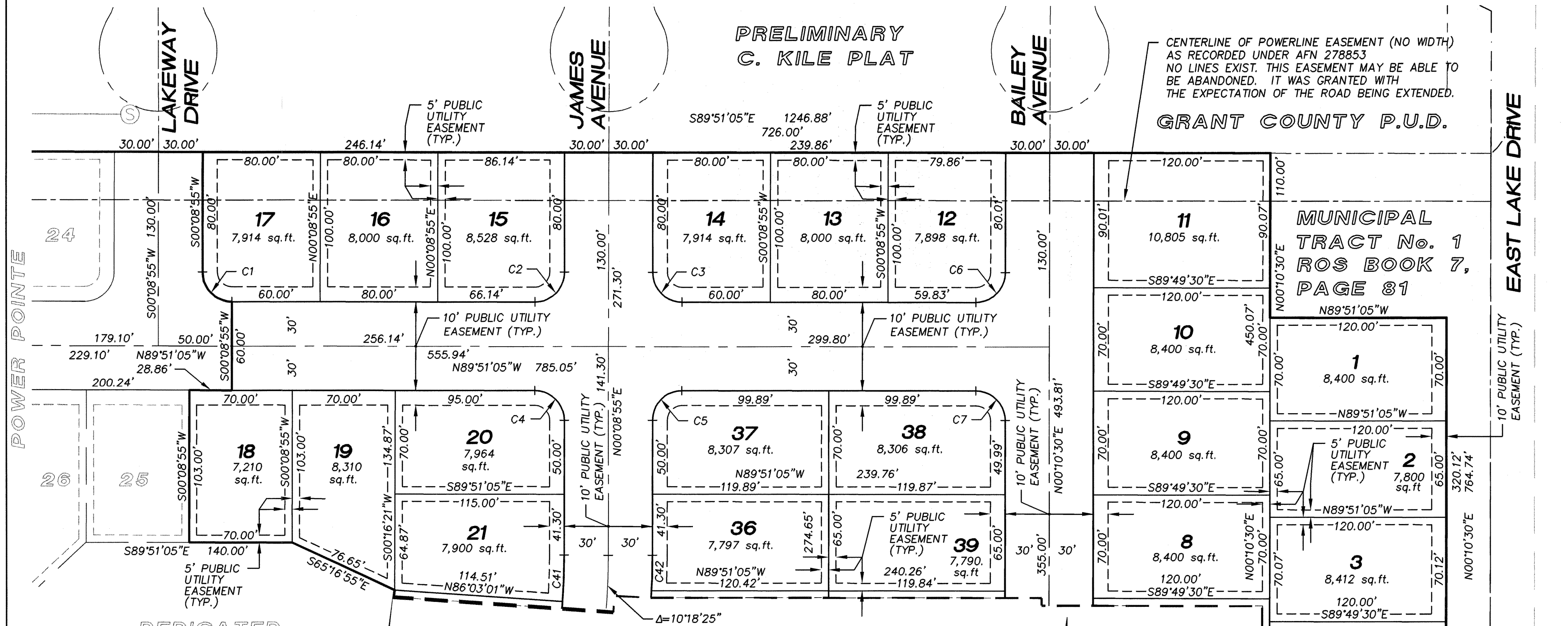


# A PORTION OF SEC 27, TWP 19 N., RGE 28 E., W.M. GRANT COUNTY, WASHINGTON

## NOTE

- ① ROAD RIGHT-OF-WAY DEDICATED TO THE CITY OF MOSES LAKE ON THE PLAT

### PRELIMINARY C. KILE PLAT

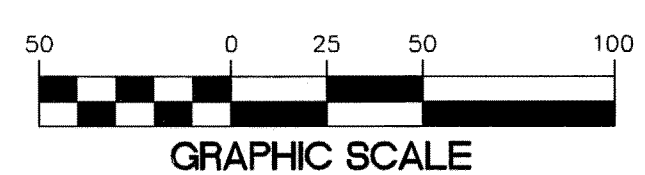


CENTERLINE OF POWERLINE EASEMENT (NO WIDTH) AS RECORDED UNDER AFN 278853 NO LINES EXIST. THIS EASEMENT MAY BE ABANDONED. IT WAS GRANTED WITH THE EXPECTATION OF THE ROAD BEING EXTENDED.  
GRANT COUNTY P.U.D.

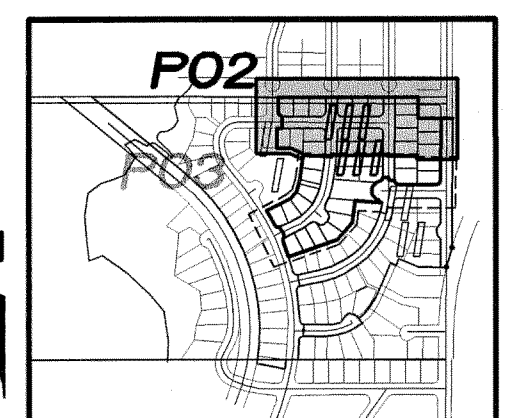
MUNICIPAL TRACT No. 1 ROS BOOK 7, PAGE 81

$\Delta=10^{\circ}18'25''$   
 $R=500.00'$   
 $L=89.94'$   
 $T=45.09'$   
MATCHLINE SEE SHEET P03

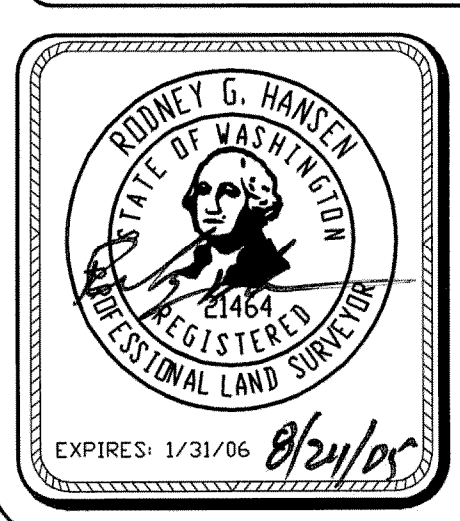
CURVE	DELTA	RADIUS	LENGTH	TANGENT
C1	90°00'00"	20.00'	31.42'	20.00'
C2	90°00'00"	20.00'	31.42'	20.00'
C3	90°00'00"	20.00'	31.42'	20.00'
C4	90°00'00"	20.00'	31.42'	20.00'
C5	90°00'00"	20.00'	31.42'	20.00'
C6	89°58'25"	20.00'	31.41'	19.99'
C7	90°01'35"	20.00'	31.43'	20.01'
C41	3°48'05"	470.00'	31.18'	15.60'
C42	2°33'46"	530.00'	23.71'	11.85'



SCALE : 1" = 50'



SCALE : 1" = 1000'



**Pacific Engineering Design, LLC**  
Civil Engineering and Planning Consultants

4180 LIND AVENUE S.W.  
RENTON, WA 98055  
PHONE: (425) 251-8811  
FAX: (425) 251-8880  
WEB SITE: PACENG.COM

## POWER POINTE MAJOR PLAT III

CITY OF MOSES LAKE, WA  
FOR: SMART HOMES  
107 WASHINGTON  
ALGONA, WA 98001  
PHONE: (253) 833-7755, FAX: (253) 876-0530  
E-MAIL: SMARTHOMES108@COMCAST.NET

### PRELIMINARY PLAT POWER POINTE HORIZONTAL CONTROL PLAN

PROJECT NO.: 05065  
DRAWN BY: JGC  
ISSUE DATE: 08-24-05  
SHEET REV.:

05065HC02-PHASE-III-P02.DWG  
**P02**