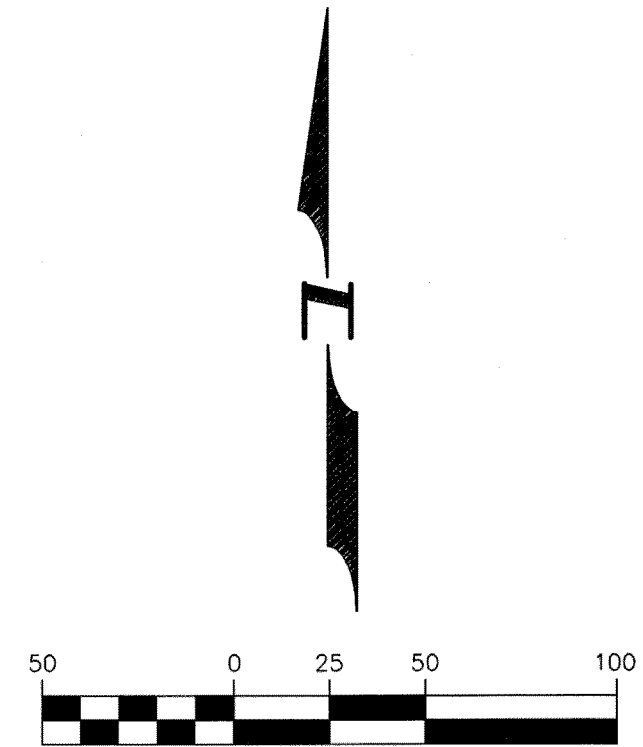
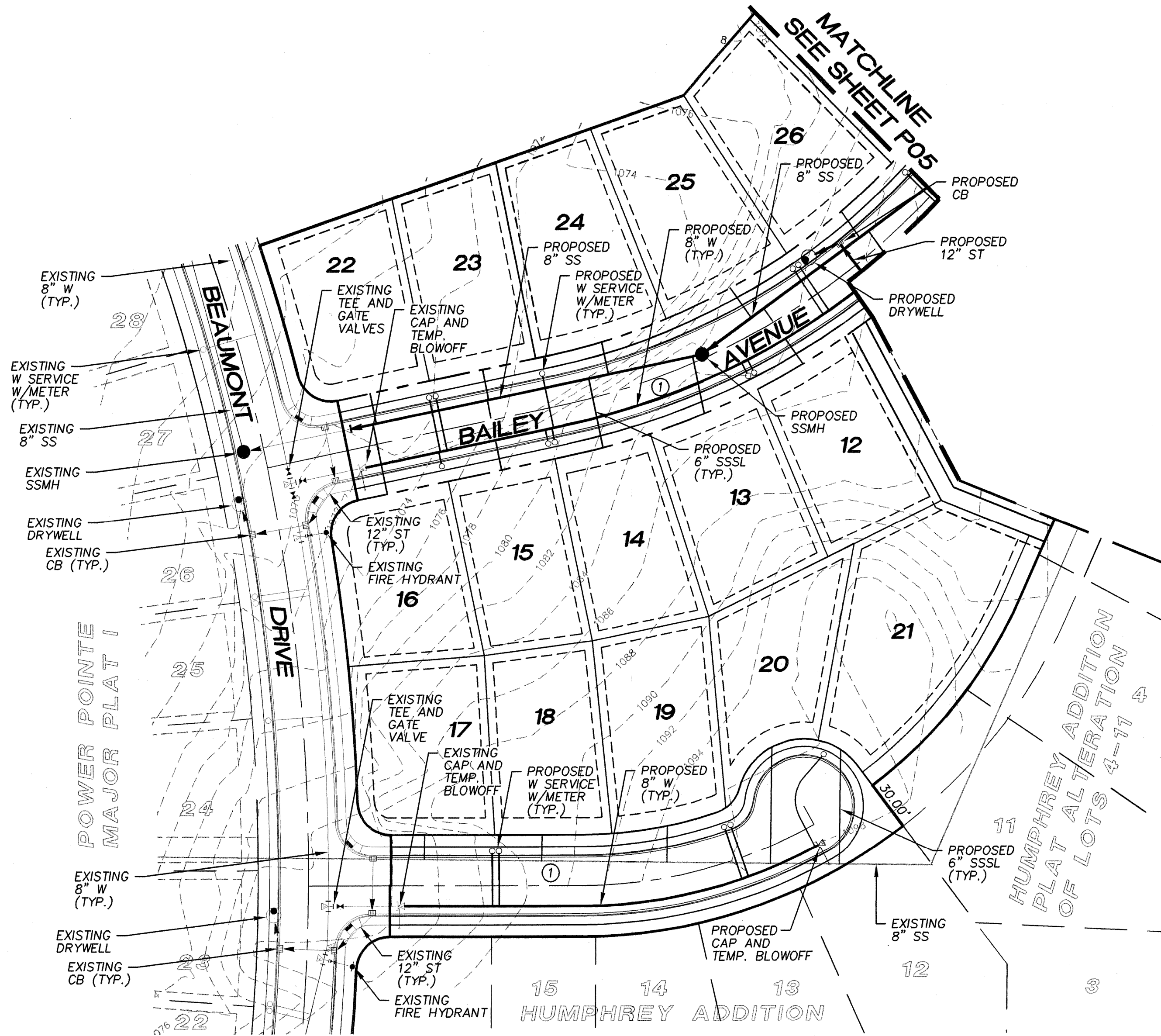


REVISIONS:

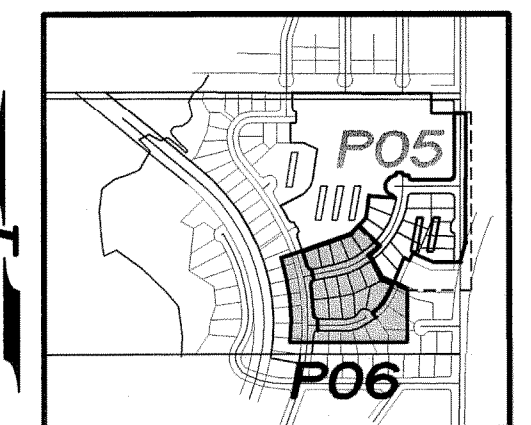
A PORTION OF SEC 27, TWP 19 N., RGE 28 E., W.M. GRANT COUNTY, WASHINGTON



GRAPHIC SCALE
SCALE : 1" = 50'

NOTE

- ① ROAD RIGHT-OF-WAY DEDICATED TO THE CITY OF MOSES LAKE ON THE PLAT



KEY MAP
SCALE ; 1" = 1000'



**Pacific
Engineering
Design, LLC**

Civil Engineering and
Planning Consultants

4180 LIND AVENUE S.W.
RENTON, WA 98055
PHONE:
(425) 251-8811
FAX:
(425) 251-8880
WEB SITE:
PACENG.COM

POWER POINT MAJOR PLAT II

CITY OF MOSES LAKE, WA

FOR:
SMART HOMES
107 WASHINGTON
ALGONA, WA 98001
PHONE: (253) 833-7755, FAX: (253) 876-0530
E-MAIL: SMARTHOMES108@COMCAST.NET

PRELIMINARY PLAT POWER POINT COMPOSITE UTILITY PLAN

PROJECT NO.: 05065

DRAWN BY: JGC

ISSUE DATE: 08-24-05

SHEET REV.:

05065CU02-PHASE-II-P06.DWG

P06