

REVISIONS:

A PORTION OF SEC 27, TWP 19 N., RGE 28 E., W.M. GRANT COUNTY, WASHINGTON

LEGEND

⊕ FOUND MONUMENT AS NOTED

• SET 5/8" REBAR W/PLASTIC CAP, P.L.S. 21651 UNLESS OTHERWISE NOTED, DATE :

△ CALCULATED POINT ONLY

U.S.B.R. = UNITED STATES BUREAU OF RECLAMATION

PLATS OF HUMPHREY ADDITION BOOK 7, PAGE 41, AND HUMPHREY ADDITION PLAT ALTERATION BOOK 14, PAGE 52

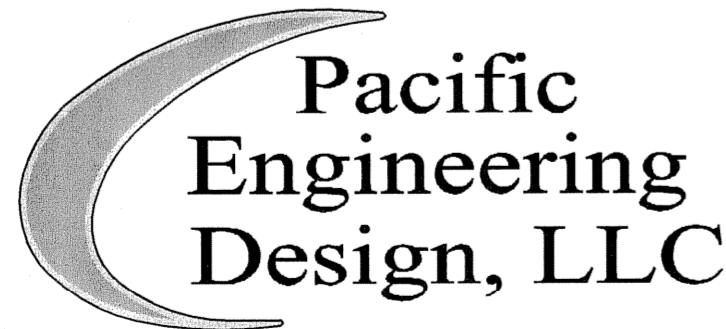
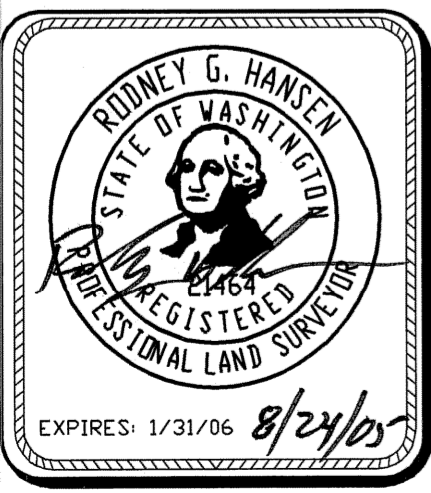
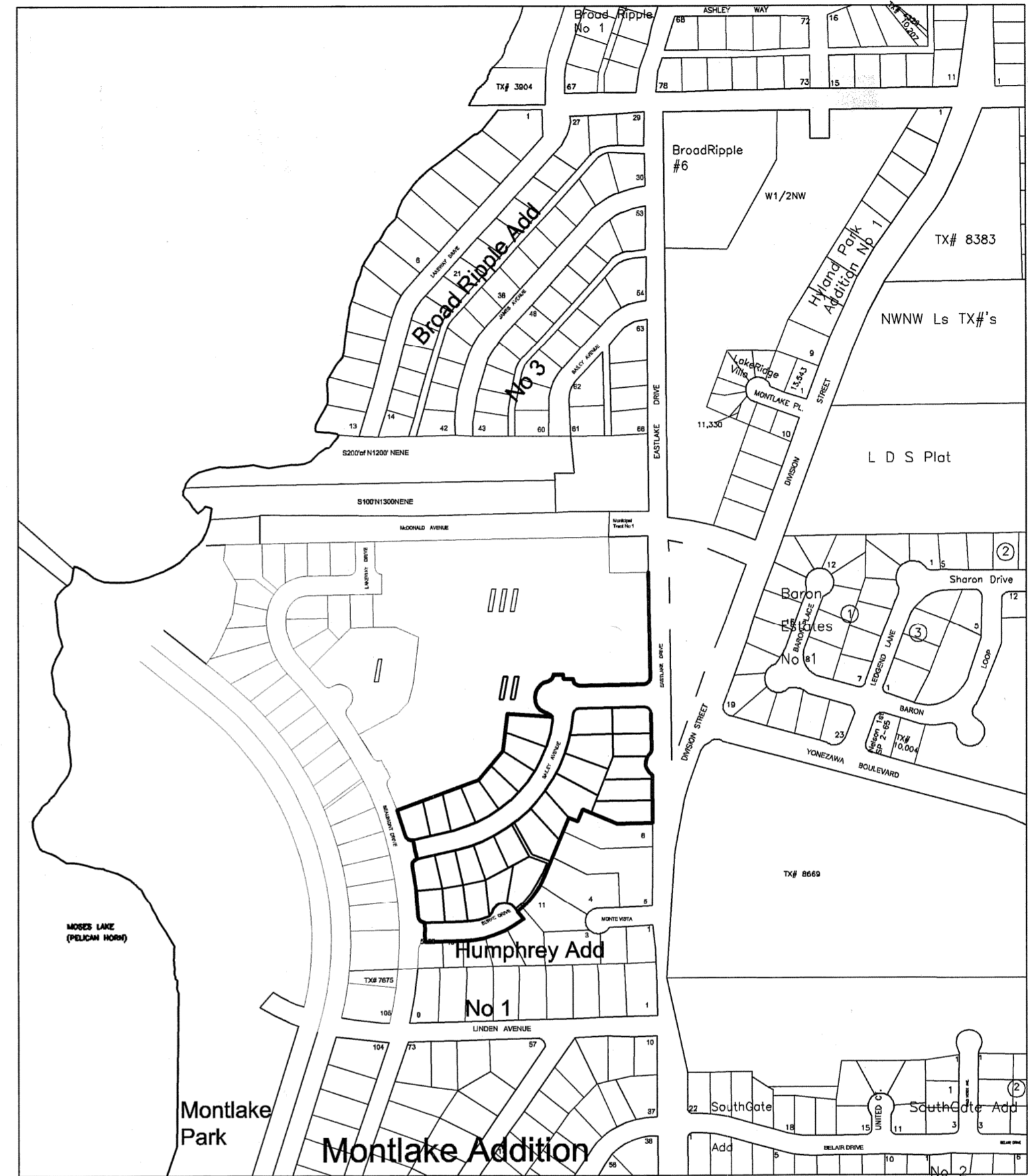
PLAT OF MONTLAKE ADDITION NO. 1 BOOK 5, PAGE 45

MUNICIPAL TRACT No. 1 ROS BOOK 7, PAGE 81

— PLAT BOUNDARY

- - - SECTION LINE

- - - SECTION BREAK LINE



Civil Engineering and Planning Consultants

4180 LIND AVENUE S.W.
RENTON, WA 98055
PHONE:
(425) 251-8811
FAX:
(425) 251-8880
WEB SITE:
PACENG.COM

POWER POINTE MAJOR PLAT II

CITY OF MOSES LAKE, WA

FOR:
SMART HOMES
107 WASHINGTON
ALGONA, WA 98001
PHONE: (253) 833-7755, FAX: (253) 876-0530
E-MAIL: SMARTHOMES108@COMCAST.NET

PRELIMINARY PLAT POWER POINTE VICINITY MAP

PROJECT NO.: 05065

DRAWN BY: JC

ISSUE DATE: 08-24-05

SHEET REV.:

05065HC04-PHASE-II-P04.DWG

P04