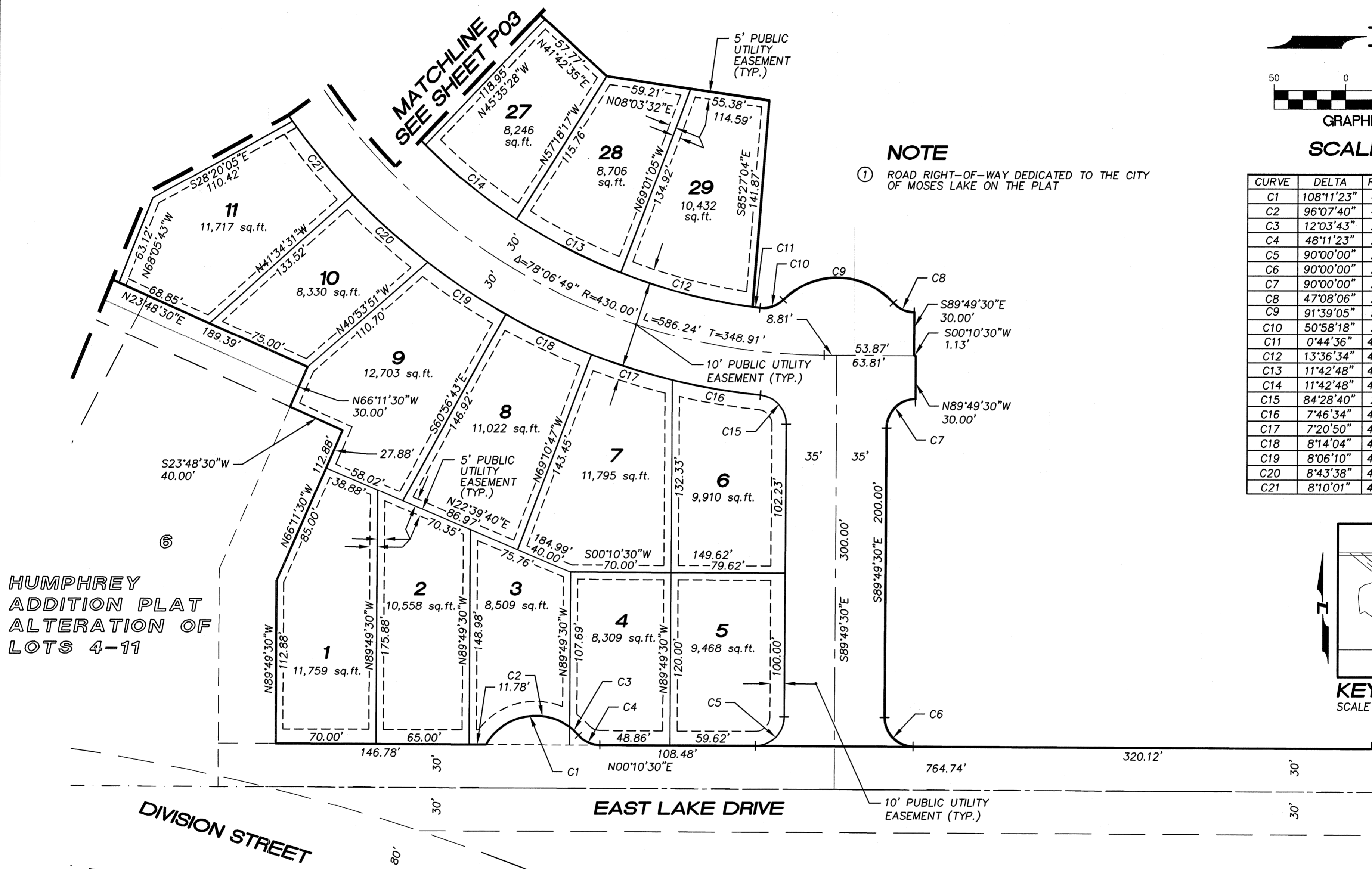
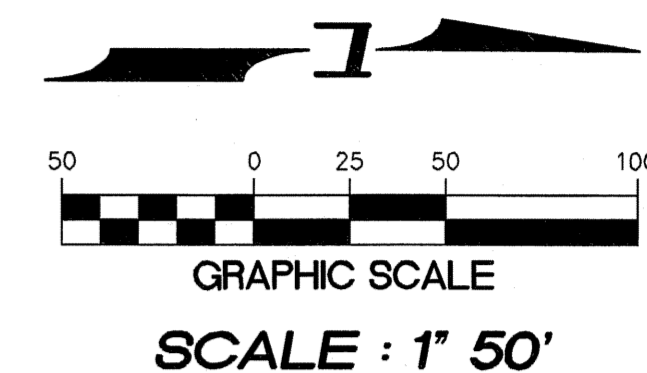


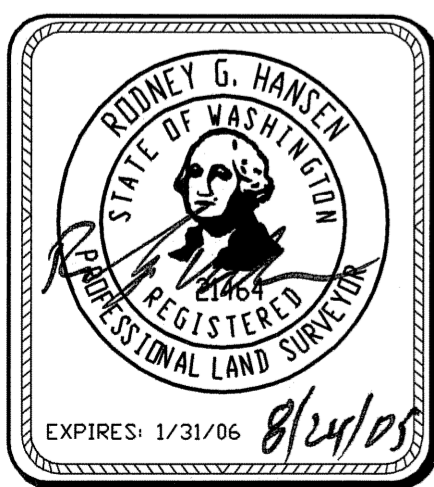
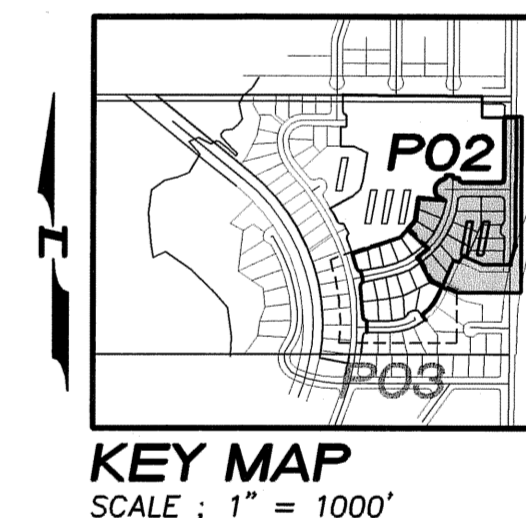
# A PORTION OF SEC 27, TWP 19 N., RGE 28 E., W.M. GRANT COUNTY, WASHINGTON



HUMPHREY  
ADDITION PLAT  
ALTERATION OF  
LOTS 4-11

**NOTE**  
① ROAD RIGHT-OF-WAY DEDICATED TO THE CITY OF MOSES LAKE ON THE PLAT

CURVE	DELTA	RADIUS	LENGTH	TANGENT
C1	108°11'23"	40.00'	75.53'	55.25'
C2	96°07'40"	40.00'	67.11'	44.52'
C3	12°03'43"	20.00'	8.42'	4.23'
C4	48°11'23"	20.00'	16.82'	8.94'
C5	90°00'00"	20.00'	31.42'	20.00'
C6	90°00'00"	20.00'	31.42'	20.00'
C7	90°00'00"	20.00'	31.42'	20.00'
C8	47°08'06"	20.00'	16.45'	8.72'
C9	91°39'05"	53.50'	85.58'	55.06'
C10	50°58'18"	20.00'	17.79'	9.53'
C11	0°44'36"	400.00'	5.19'	2.59'
C12	13°36'34"	400.00'	95.01'	47.73'
C13	11°42'48"	400.00'	81.77'	41.03'
C14	11°42'48"	400.00'	81.77'	41.03'
C15	84°28'40"	20.00'	29.49'	18.16'
C16	7°46'34"	460.00'	62.43'	31.26'
C17	7°20'50"	460.00'	58.99'	29.53'
C18	8°14'04"	460.00'	66.11'	33.11'
C19	8°06'10"	460.00'	65.05'	32.58'
C20	8°43'38"	460.00'	70.07'	35.10'
C21	8°10'01"	460.00'	65.57'	32.84'



**Pacific Engineering Design, LLC**  
Civil Engineering and Planning Consultants

4180 LIND AVENUE S.W.  
RENTON, WA 98055  
PHONE: (425) 251-8811  
FAX: (425) 251-8880  
WEB SITE: PACENG.COM

## POWER POINT MAJOR PLAT II

CITY OF MOSES LAKE, WA

FOR:  
SMART HOMES  
107 WASHINGTON  
ALGONA, WA 98001  
PHONE: (253) 833-7755, FAX: (253) 876-0530  
E-MAIL: SMARTHOMES108@COMCAST.NET

### PRELIMINARY PLAT POWER POINT HORIZONTAL CONTROL PLAN

PROJECT NO.: **05065**  
DRAWN BY: **JGC**  
ISSUE DATE: **08-24-05**  
SHEET REV.:

05065HC02-PHASE-II-P02.DWG

# P02