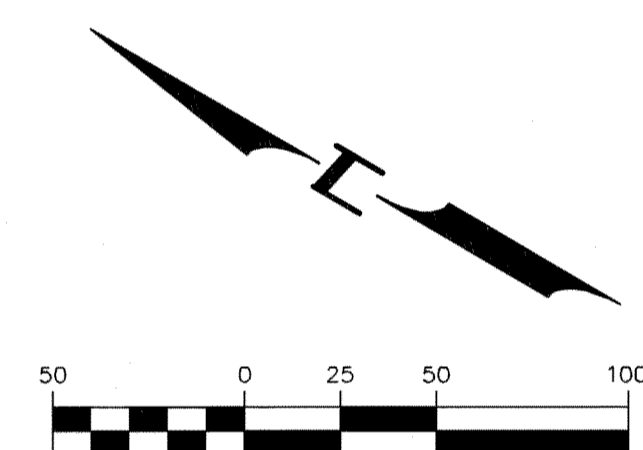
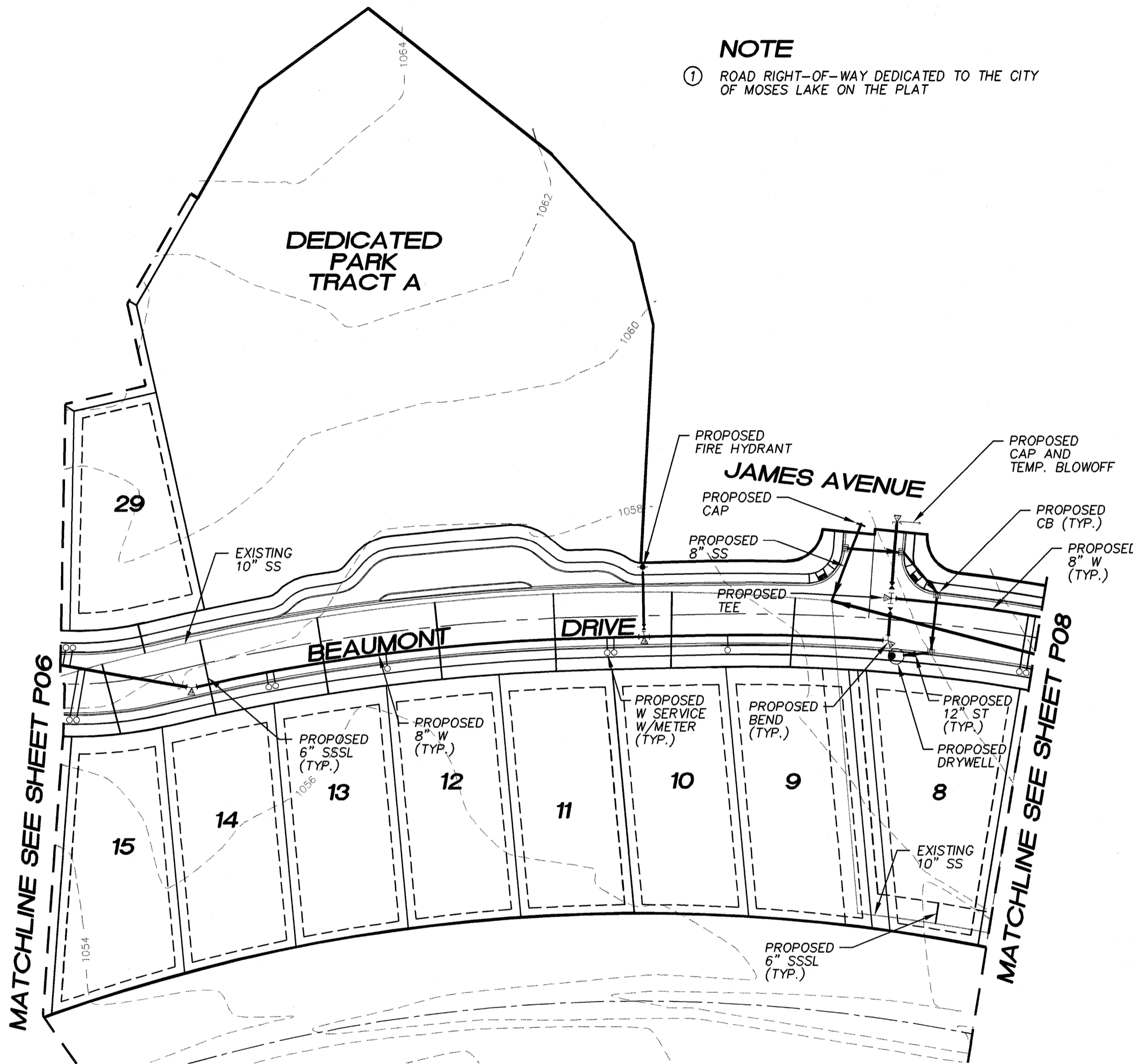


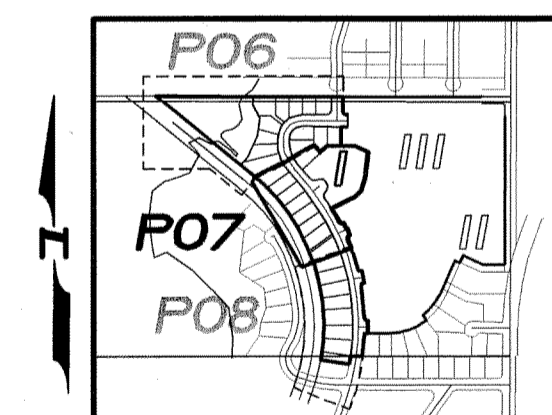
A PORTION OF SEC 27, TWP 19 N., RGE 28 E., W.M. GRANT COUNTY, WASHINGTON

NOTE

- ① ROAD RIGHT-OF-WAY DEDICATED TO THE CITY OF MOSES LAKE ON THE PLAT



GRAPHIC SCALE
SCALE : 1" = 50'



KEY MAP
SCALE ; 1" = 1000'



Pacific Engineering Design, LLC
Civil Engineering and Planning Consultants

4180 LIND AVENUE S.W.
RENTON, WA 98055
PHONE: (425) 251-8811
FAX: (425) 251-8880
WEB SITE: PACENG.COM

POWER POINTE MAJOR PLAT I

CITY OF MOSES LAKE, WA

FOR:
SMART HOMES
107 WASHINGTON
ALGONA, WA 98001
PHONE: (253) 833-7755, FAX: (253) 876-0530
E-MAIL: SMARTHOMES108@COMCAST.NET

PRELIMINARY PLAT POWER POINTE COMPOSITE UTILITY PLAN

PROJECT NO.: 05065
DRAWN BY: JGC
ISSUE DATE: 08-24-05
SHEET REV.:

05065CU08-PHASE-I-P07.DWG
P07