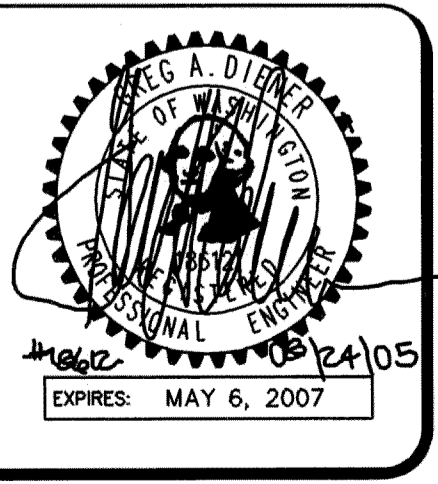
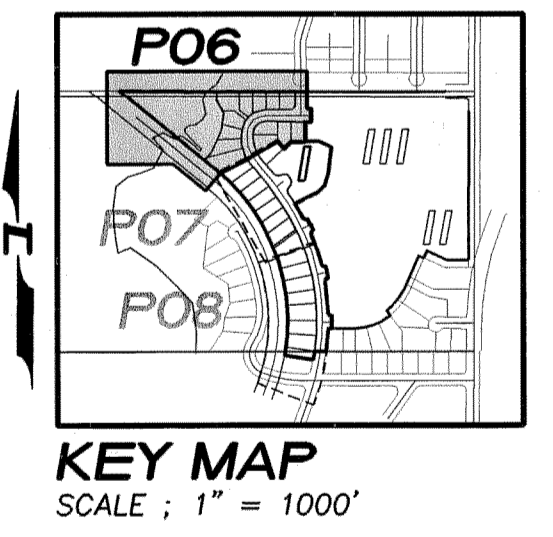
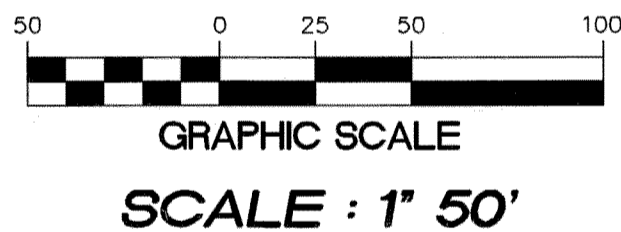
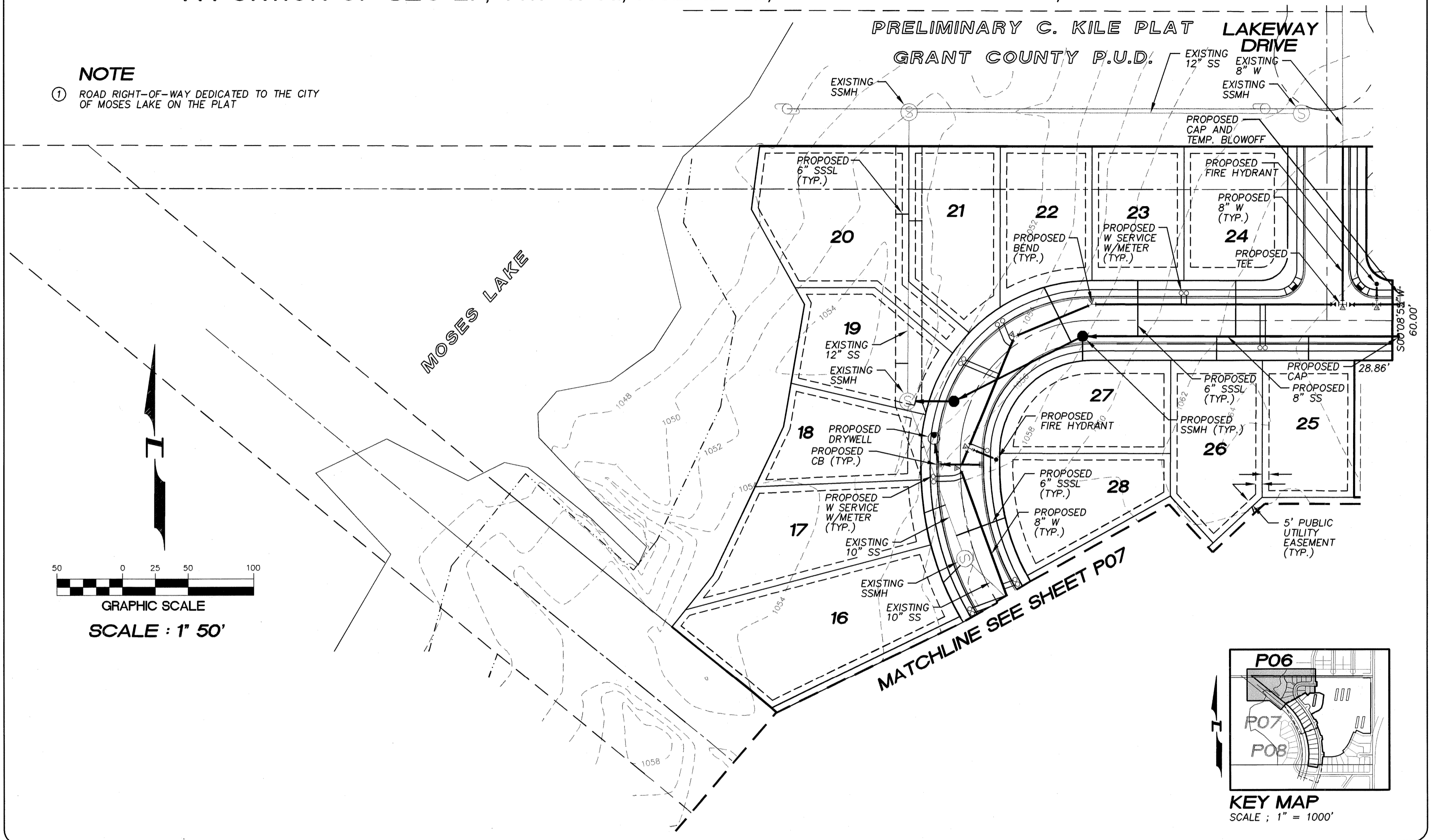


REVISIONS:

# A PORTION OF SEC 27, TWP 19 N., RGE 28 E., W.M. GRANT COUNTY, WASHINGTON

## NOTE

- ① ROAD RIGHT-OF-WAY DEDICATED TO THE CITY OF MOSES LAKE ON THE PLAT



**Pacific Engineering Design, LLC**  
Civil Engineering and Planning Consultants

4180 LIND AVENUE S.W.  
RENTON, WA 98055  
PHONE: (425) 251-8811  
FAX: (425) 251-8880  
WEB SITE: PACENG.COM

**POWER POINTE MAJOR PLAT I**  
CITY OF MOSES LAKE, WA

FOR:  
SMART HOMES  
107 WASHINGTON  
ALGONA, WA 98001  
PHONE: (253) 833-7755, FAX: (253) 876-0530

**PRELIMINARY PLAT POWER POINTE COMPOSITE UTILITY PLAN**

PROJECT NO.: 05065  
DRAWN BY: JGC  
ISSUE DATE: 08-24-05  
SHEET REV.:

05065CU01-PHASE-I-P06.DWG

# P06