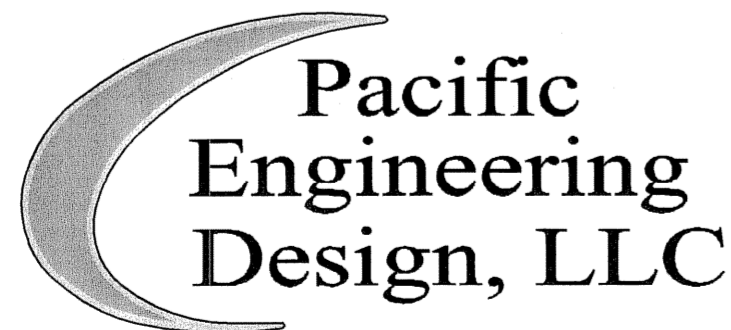
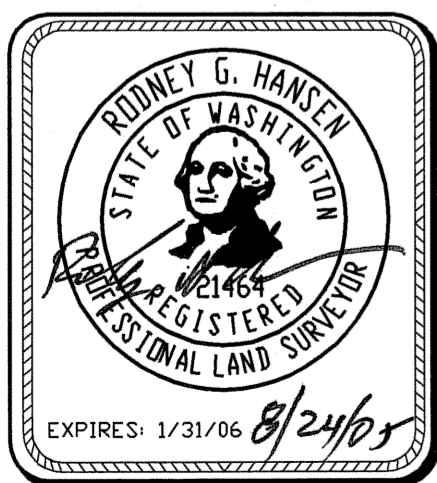
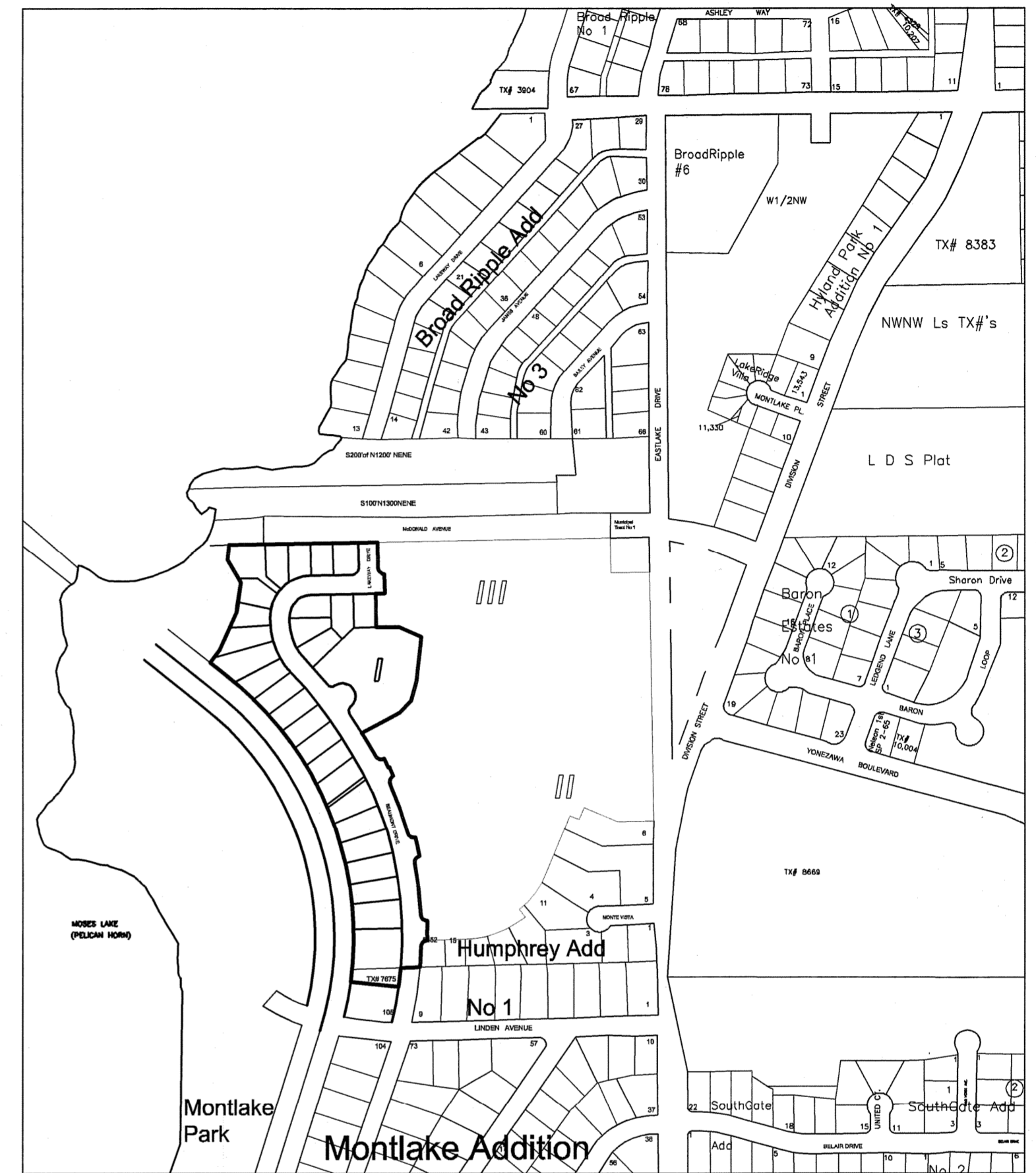


A PORTION OF SEC 27, TWP 19 N., RGE 28 E., W.M. GRANT COUNTY, WASHINGTON

LEGEND

- ⊕ FOUND MONUMENT AS NOTED
- SET 5/8" REBAR W/PLASTIC CAP, P.L.S. 21651 UNLESS OTHERWISE NOTED, DATE :
- △ CALCULATED POINT ONLY
- U.S.B.R. = UNITED STATES BUREAU OF RECLAMATION
- PLATS OF HUMPHREY ADDITION BOOK 7, PAGE 41, AND HUMPHREY ADDITION PLAT ALTERATION BOOK 14, PAGE 52
- PLAT OF MONTLAKE ADDITION NO. 1 BOOK 5, PAGE 45
- MUNICIPAL TRACT No. 1 ROS BOOK 7, PAGE 81
- PLAT BOUNDARY
- - - SECTION LINE
- - - SECTION BREAK LINE



Civil Engineering and Planning Consultants

4180 LIND AVENUE S.W.
 RENTON, WA 98055
 PHONE: (425) 251-8811
 FAX: (425) 251-8880
 WEB SITE: PACENG.COM

POWER POINTE MAJOR PLAT I

CITY OF MOSES LAKE, WA

FOR:
 SMART HOMES
 107 WASHINGTON
 ALGONA, WA 98001
 PHONE: (253) 833-7755, FAX: (253) 876-0530
 E-MAIL: SMARTHOMES108@COMCAST.NET

PRELIMINARY PLAT POWER POINTE VICINITY MAP

PROJECT NO.: **05065**
 DRAWN BY: **JGC**
 ISSUE DATE: **08-24-05**
 SHEET REV.:

05065HC05-PHASE-I-P05.DWG

P05