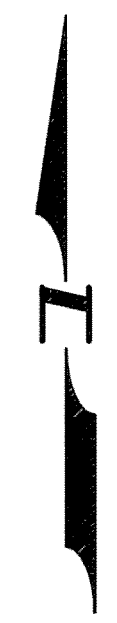
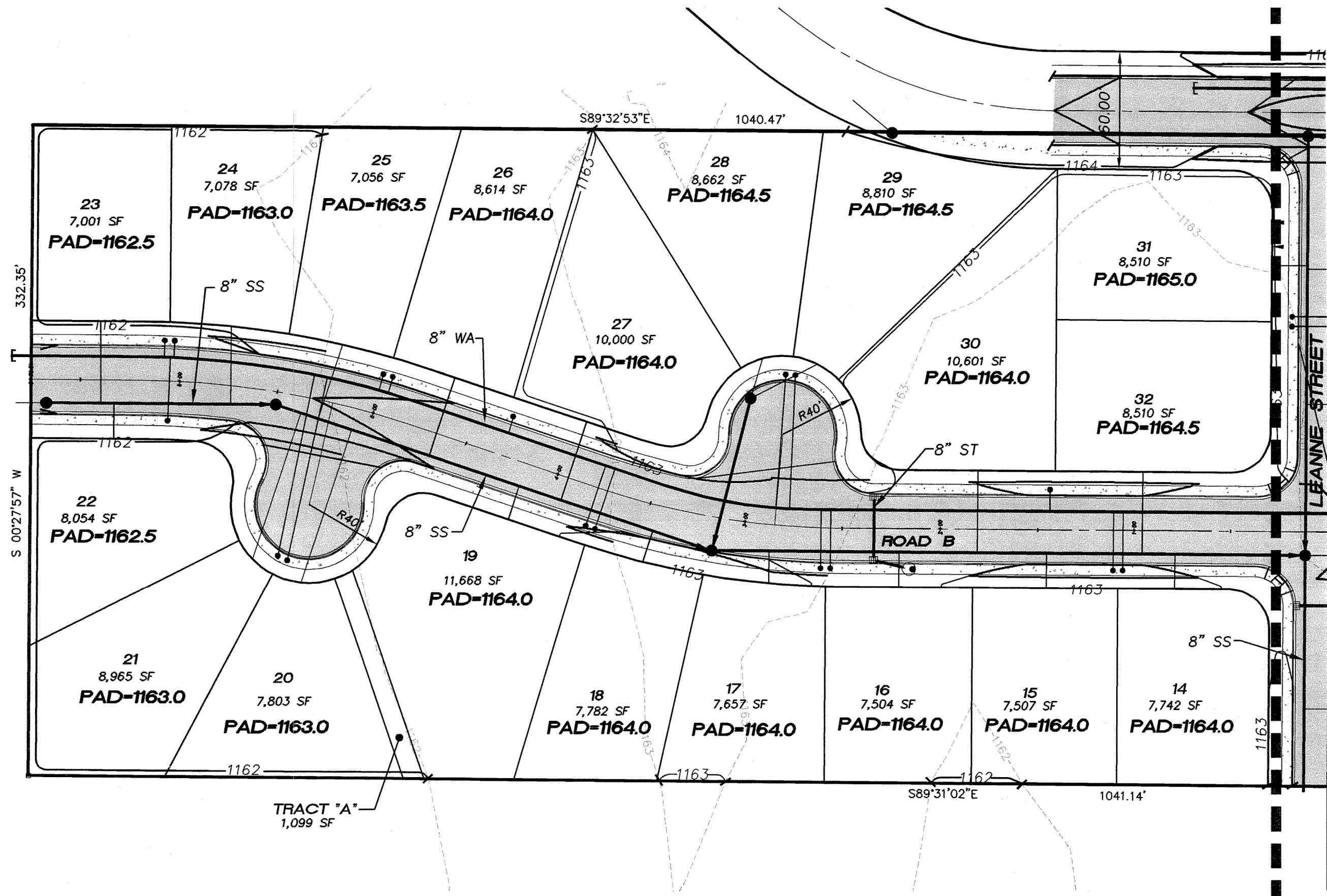


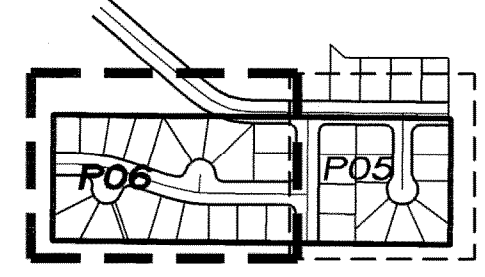
REVISIONS:

A PORTION OF SW 1/4 SEC 26, TWP 19 N., RGE 28 E., W.M. GRANT COUNTY, WASHINGTON



SCALE : 1" = 50'

KEYMAP



LEGEND

PROPOSED:	
	BOUNDARY / R.O.W. LINE
	CENTERLINE
	CATCHBASIN (TYPE I) WITH 48" PRECAST CONCRETE DRYWELL
	FIRE HYDRANT ASSEMBLY
	WATER VALVE
	DOMESTIC WATER METER NEW
	SANITARY SEWER MANHOLE NEW
	ASPHALT PAVEMENT NEW
	PAD=1164.0 FINISHED ELEVATION SUBGRADE
	1163 FINISHED CONTOUR ELEVATION

MATCH LINE SEE PAGE P05



Pacific Engineering Design, LLC
 Civil Engineering and Planning Consultants

4180 LIND AVENUE S.W.
 RENTON, WA 98055
 PHONE: (425) 251-8811
 FAX: (425) 251-8880
 WEB SITE: PACENG.COM

LEANNE TERRACE
 CITY OF MOSES LAKE, WA

FOR:
 SMART HOMES
 107 WASHINGTON
 ALGONA, WA 98001
 PHONE: (253) 833-7755, FAX: (253) 876-0530

PRELIMINARY PLAT COMPOSITE UTILITIES

PROJECT NO.: **05064**
 DRAWN BY: **TLR**
 ISSUE DATE: **07-29-05**
 SHEET REV.:

05064HC01-P05-P06.DWG
P06