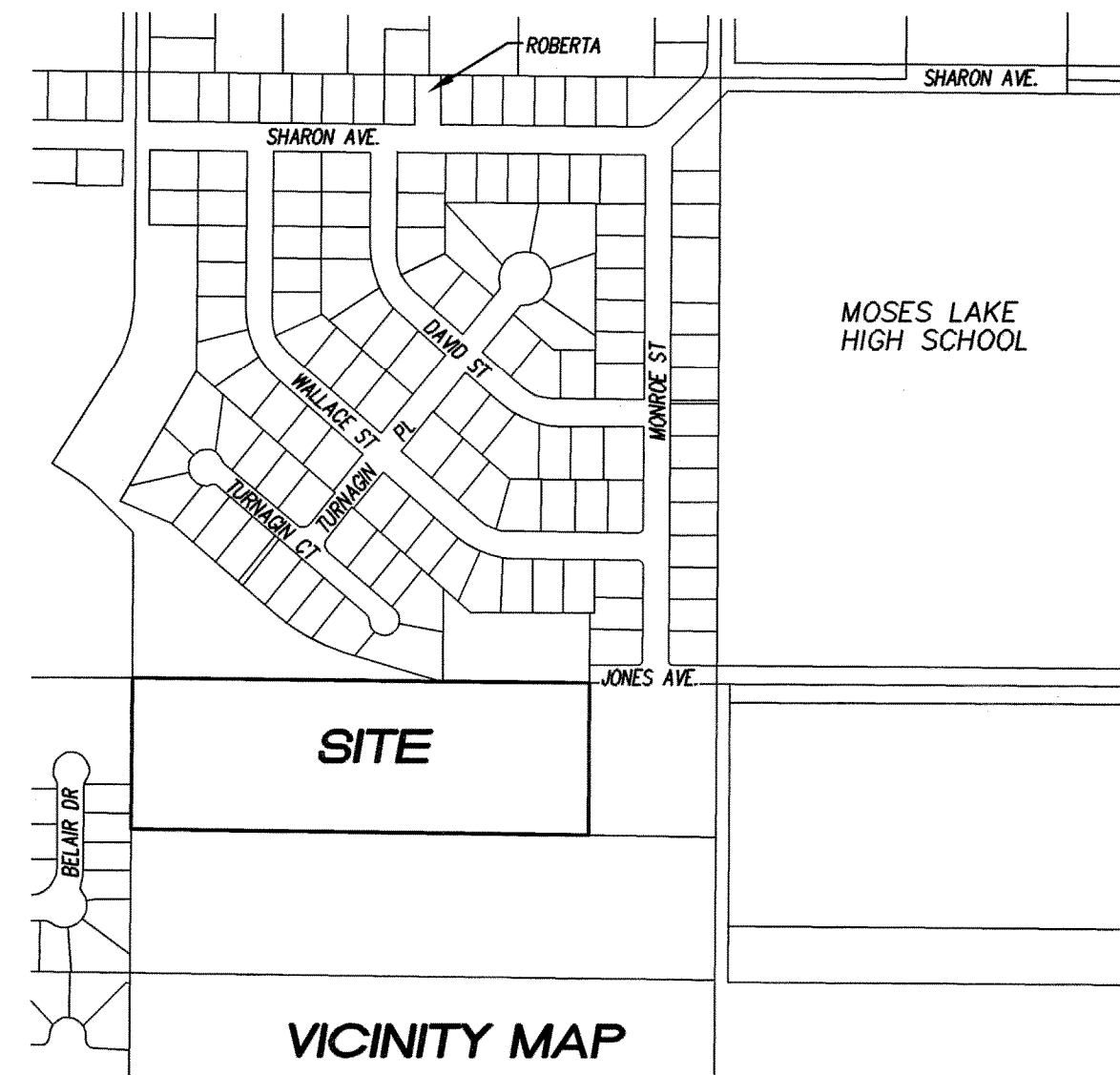


REVISIONS:

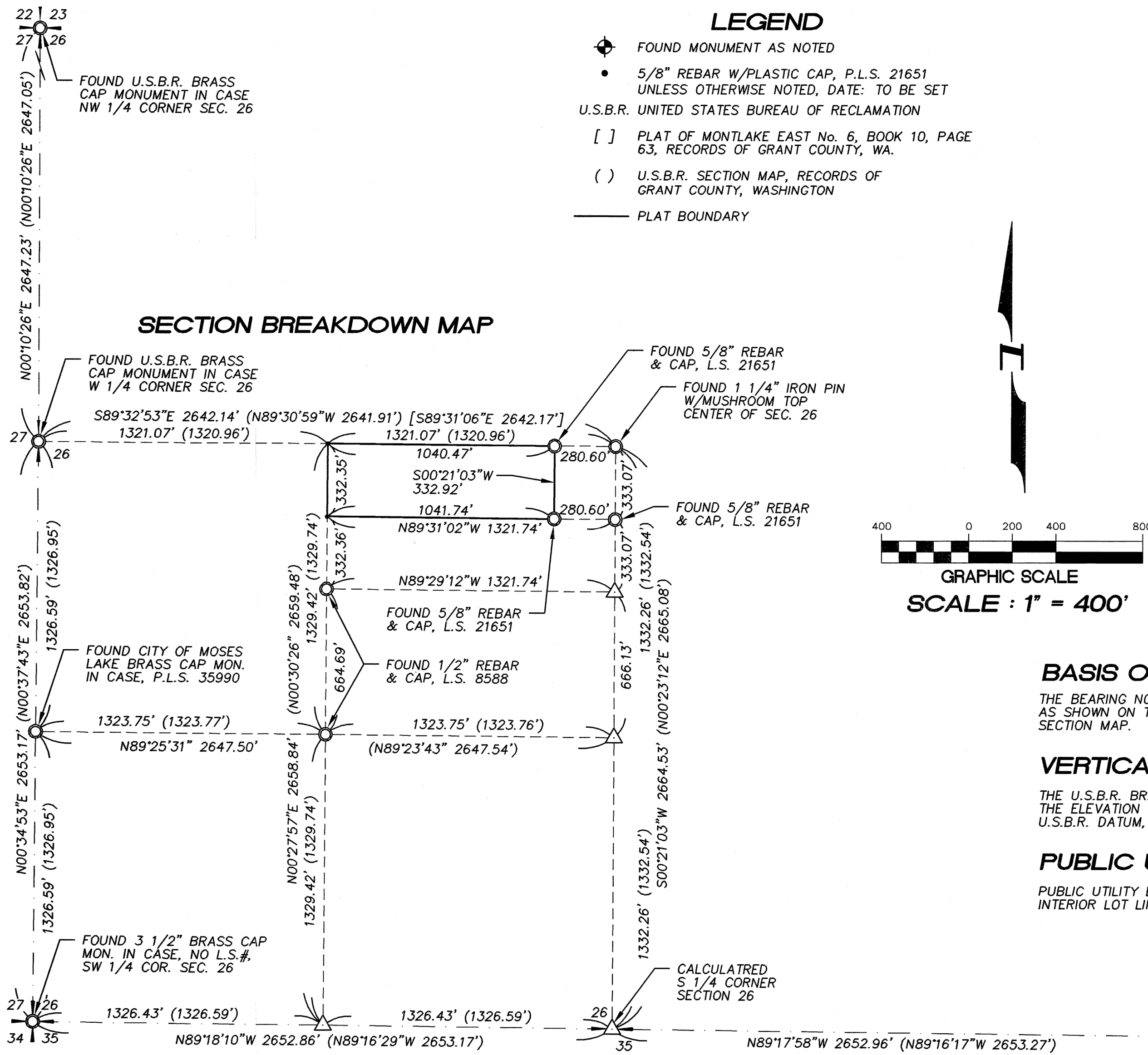
A PORTION OF SW 1/4 SEC 26, TWP 19 N., RGE 28 E., W.M. GRANT COUNTY, WASHINGTON

LEGEND

- ◆ FOUND MONUMENT AS NOTED
- 5/8" REBAR W/PLASTIC CAP, P.L.S. 21651 UNLESS OTHERWISE NOTED, DATE: TO BE SET
- U.S.B.R. UNITED STATES BUREAU OF RECLAMATION
- [] PLAT OF MONTLAKE EAST No. 6, BOOK 10, PAGE 63, RECORDS OF GRANT COUNTY, WA.
- () U.S.B.R. SECTION MAP, RECORDS OF GRANT COUNTY, WASHINGTON
- PLAT BOUNDARY



SECTION BREAKDOWN MAP



BASIS OF BEARINGS

THE BEARING N00°10'26"E ON THE WEST LINE OF THE NORTHEAST QUARTER OF SECTION 26 AS SHOWN ON THIS PLAT EQUALS THE BEARING FOR THE SAME LINE ON THE U.S.B.R. SECTION MAP.

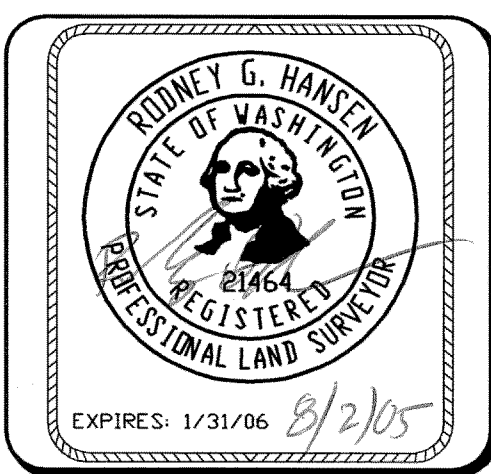
VERTICAL DATUM

THE U.S.B.R. BRASS CAP MONUMENT AT THE WEST QUARTER CORNER OF SECTION 26, HOLDS THE ELEVATION OF 1140.39 ACCORDING TO THE CITY OF MOSES LAKE RECORDS BASED ON U.S.B.R. DATUM, PER THE PLAT OF SOUTHGATE ADDITION 3 MAJOR PLAT.

PUBLIC UTILITY EASEMENTS

PUBLIC UTILITY EASEMENTS ARE DEDICATED ON THIS PLAT, 5 FOOT WIDE, EITHER SIDE OF ALL INTERIOR LOT LINES AND 10 FOOT WIDE ALONG ALL STREET RIGHT OF WAYS.

SECTION SUBDIVISION PER SURVEY BY COLUMBIA N.W. ENGINEERING, P.S.



Pacific Engineering Design, LLC
Civil Engineering and Planning Consultants

4180 LIND AVENUE S.W.
RENTON, WA 98055
PHONE: (425) 251-8811
FAX: (425) 251-8880
WEB SITE: PACENG.COM

LEANNE TERRACE

CITY OF MOSES LAKE, WA

FOR:
SMART HOMES
107 WASHINGTON
ALGONA, WA 98001
PHONE: (253) 833-7755, FAX: (253) 876-0530

PRELIMINARY PLAT SECTION BREAKDOWN / VICINITY MAP

PROJECT NO.: 05064
DRAWN BY: TLR
ISSUE DATE: 07-29-05
SHEET REV.:

05064HC01-P04.DWG

P04