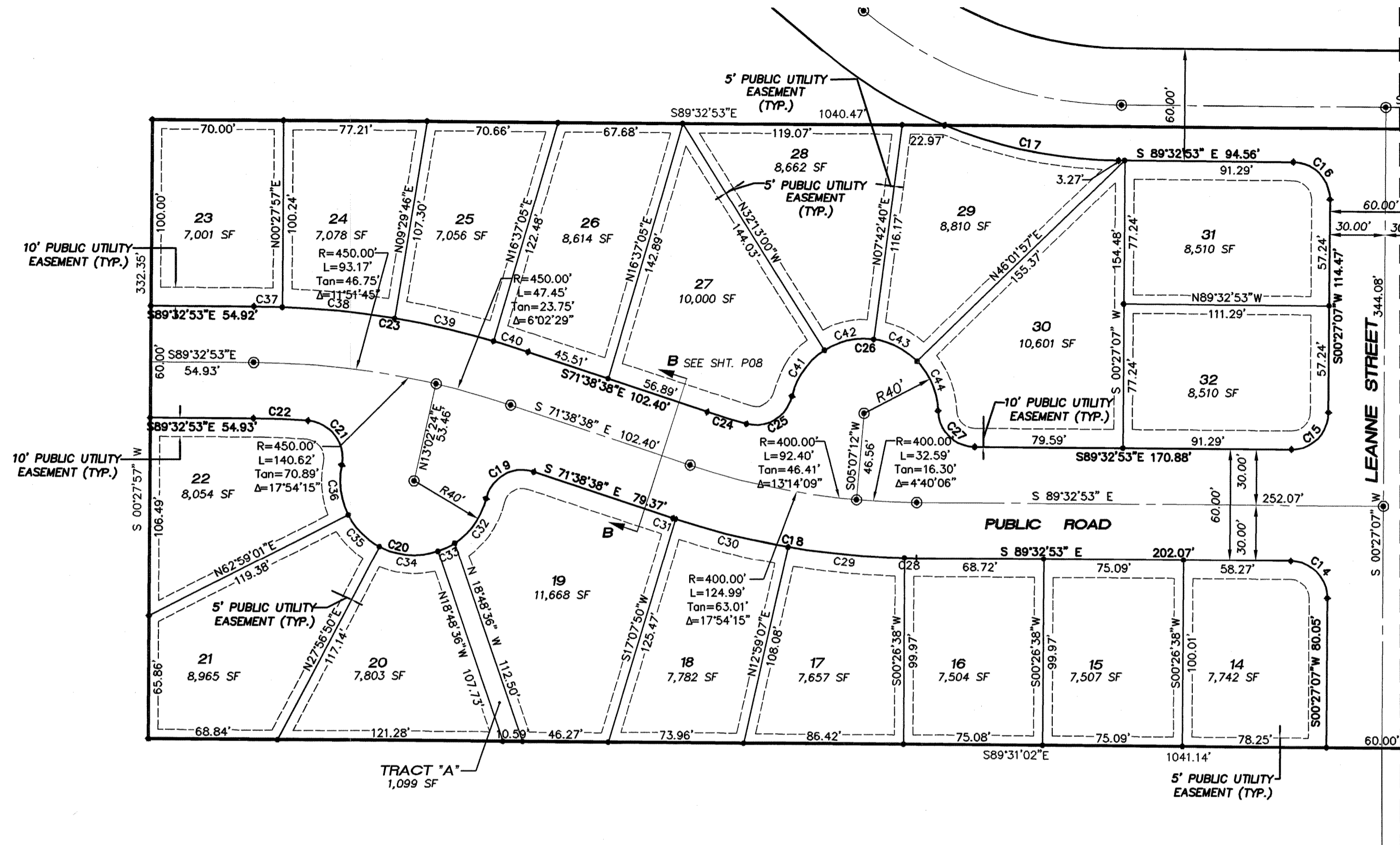


REVISIONS:

A PORTION OF SW 1/4 SEC 26, TWP 19 N., RGE 28 E., W.M. GRANT COUNTY, WASHINGTON



SCALE : 1" = 50'

CURVE TABLE

CURVE TABLE				
CURVE	LENGTH	RADIUS	TANGENT	DELTA
C14	31.42	20.00	20.00	90°00'00"
C15	31.42	20.00	20.00	90°00'00"
C16	31.42	20.00	20.00	90°00'00"
C17	95.90	250.00	48.55	21°58'47"
C18	134.37	430.00	67.74	17°54'15"
C19	33.14	20.00	21.80	94°56'27"
C20	124.69	40.00	3298.23	178°36'37"
C21	33.82	20.00	22.56	96°52'40"
C22	29.05	420.00	14.53	3°57'45"
C23	149.99	480.00	75.61	17°54'15"
C24	22.38	370.00	11.19	3°27'58"
C25	31.98	20.00	20.57	91°36'31"
C26	115.19	40.00	303.89	165°00'11"
C27	30.66	20.00	19.26	87°49'57"
C28	6.36	430.00	3.18	0°50'52"
C29	63.26	430.00	31.69	8°25'44"
C30	63.21	430.00	31.66	8°25'19"
C31	1.54	430.00	0.77	0°12'20"
C32	30.23	40.00	15.88	43°17'50"
C33	10.11	40.00	5.08	14°28'39"
C34	32.64	40.00	17.29	46°45'26"
C35	24.46	40.00	12.63	35°02'10"
C36	27.51	40.00	14.32	39°24'05"
C37	15.09	480.00	7.54	1°48'03"
C38	60.68	480.00	30.38	7°14'36"
C39	54.71	424.04	27.39	7°23'33"
C40	19.51	480.00	9.76	2°19'44"
C41	31.07	40.00	16.37	44°30'07"
C42	27.87	40.00	14.53	39°55'40"
C43	26.75	40.00	13.90	38°19'16"
C44	29.50	40.00	15.46	42°15'09"

BASIS OF BEARINGS

THE BEARING N00°10'26"E ON THE WEST LINE OF THE NORTHEAST QUARTER OF SECTION 26 AS SHOWN ON THIS PLAT EQUALS THE BEARING FOR THE SAME LINE ON THE U.S.B.R. SECTION MAP.

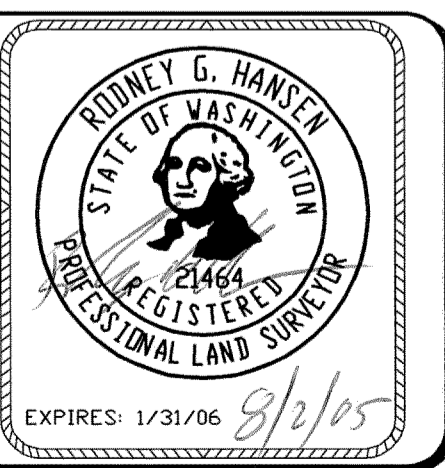
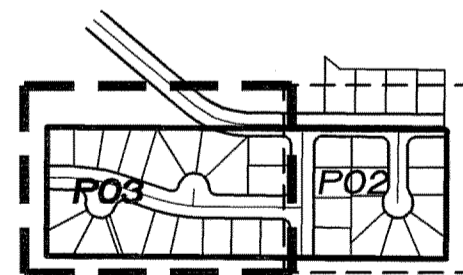
VERTICAL DATUM

THE U.S.B.R. BRASS CAP MONUMENT AT THE WEST QUARTER CORNER OF SECTION 26, HOLDS THE ELEVATION OF 1140.39 ACCORDING TO THE CITY OF MOSES LAKE RECORDS BASED ON U.S.B.R. DATUM, PER THE PLAT OF SOUTHGATE ADDITION 3 MAJOR PLAT.

PUBLIC UTILITY EASEMENTS

PUBLIC UTILITY EASEMENTS ARE DEDICATED ON THIS PLAT, 5 FOOT WIDE, EITHER SIDE OF ALL INTERIOR LOT LINES AND 10 FOOT WIDE ALONG ALL STREET RIGHT OF WAYS.

KEYMAP



Pacific Engineering Design, LLC
Civil Engineering and Planning Consultants

4180 LIND AVENUE S.W.
RENTON, WA 98055
PHONE: (425) 251-8811
FAX: (425) 251-8880
WEB SITE: PACENG.COM

LEANNE TERRACE

CITY OF MOSES LAKE, WA

FOR:
SMART HOMES
107 WASHINGTON
ALGONA, WA 98001
PHONE: (253) 833-7755, FAX: (253) 876-0530

PRELIMINARY PLAT WEST

PROJECT NO.: 05064

DRAWN BY: TLR

ISSUE DATE: 07-29-05

SHEET REV.:

05064HC01-P02.DWG

P03