

A PORTION OF SW 1/4 SEC 26, TWP 19 N., RGE 28 E., W.M. GRANT COUNTY, WASHINGTON

BASIS OF BEARINGS

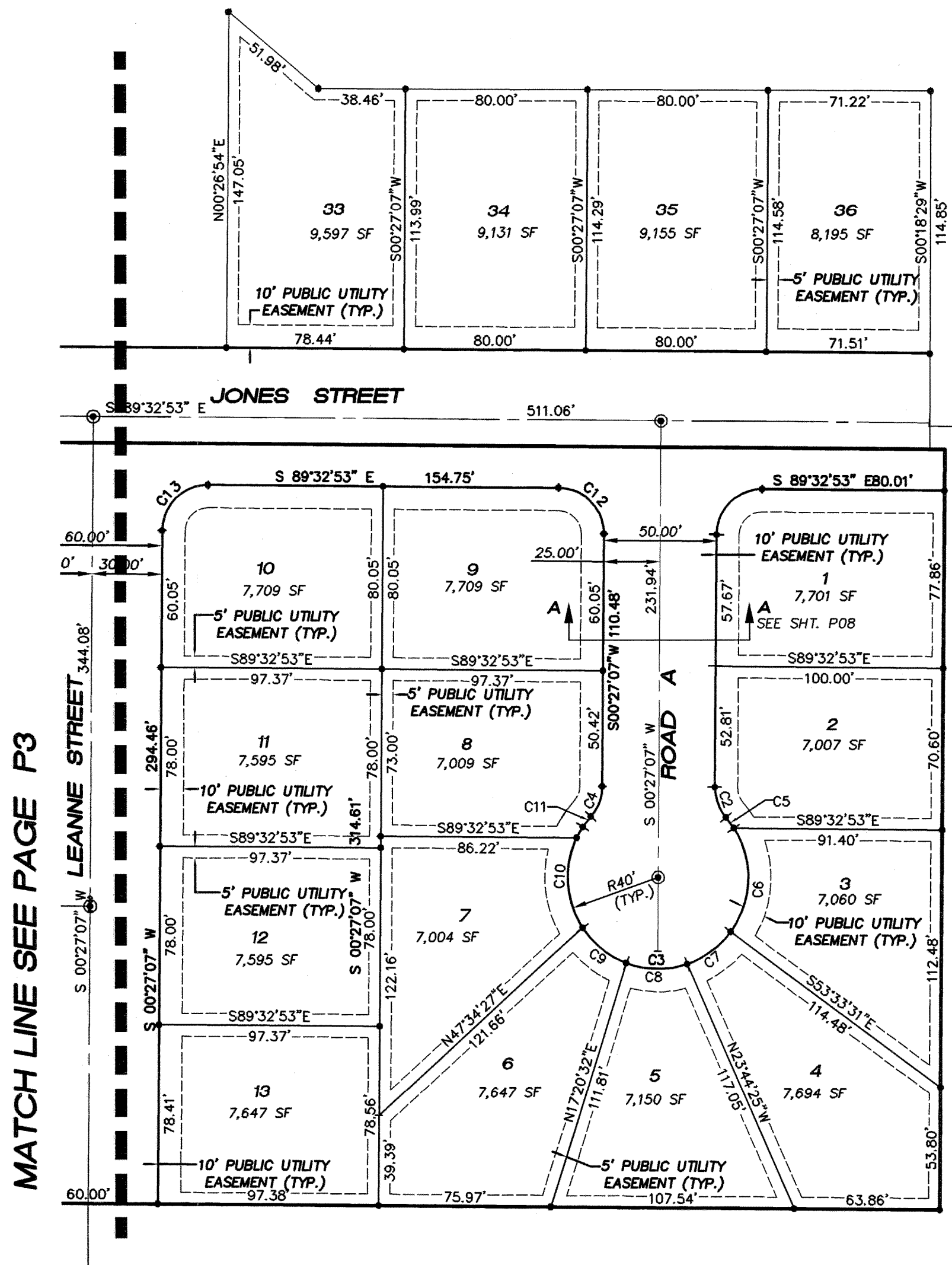
THE BEARING N00°10'26"E ON THE WEST LINE OF THE NORTHEAST QUARTER OF SECTION 26 AS SHOWN ON THIS PLAT EQUALS THE BEARING FOR THE SAME LINE ON THE U.S.B.R. SECTION MAP.

VERTICAL DATUM

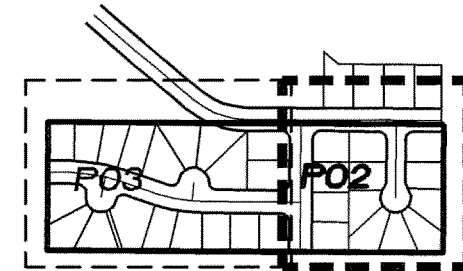
THE U.S.B.R. BRASS CAP MONUMENT AT THE WEST QUARTER CORNER OF SECTION 26, HOLDS THE ELEVATION OF 1140.39 ACCORDING TO THE CITY OF MOSES LAKE RECORDS BASED ON U.S.B.R. DATUM, PER THE PLAT OF SOUTHGATE ADDITION 3 MAJOR PLAT.

PUBLIC UTILITY EASEMENTS

PUBLIC UTILITY EASEMENTS ARE DEDICATED ON THIS PLAT, 5 FOOT WIDE, EITHER SIDE OF ALL INTERIOR LOT LINES AND 10 FOOT WIDE ALONG ALL STREET RIGHT OF WAYS.



KEYMAP



SCALE : 1" = 50'

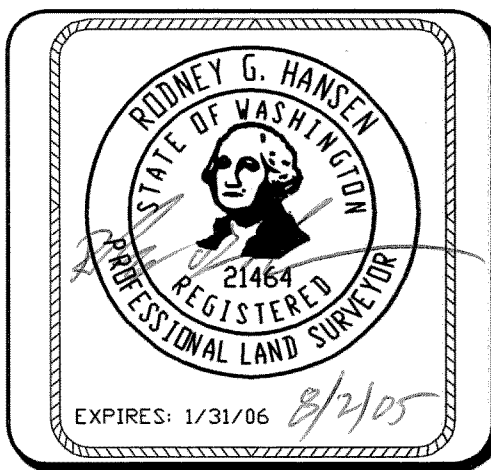
CURVE TABLE

CURVE	LENGTH	RADIUS	TANGENT	DELTA
C1	31.42	20.00	20.00	90°00'00"
C2	14.45	20.00	7.56	41°24'35"
C3	183.48	40.00	45.36	262°49'09"
C4	14.45	20.00	7.56	41°24'35"
C5	5.81	40.00	2.91	8°19'01"
C6	48.23	40.00	27.53	69°04'55"
C7	24.29	40.00	12.53	34°47'34"
C8	27.63	40.00	14.39	39°34'38"
C9	25.00	40.00	12.92	35°48'14"
C10	46.77	40.00	26.47	66°59'47"
C11	5.76	40.00	2.88	8°15'00"
C12	31.42	20.00	20.00	90°00'00"
C13	31.42	20.00	20.00	90°00'00"

LEGEND

- FOUND MONUMENT AS NOTED
- PLAT BOUNDARY
- LOT LINE
- SECTION LINE
- SECTION BREAK LINE
- ROAD RIGHT-OF-WAY
- CENTERLINE OF ROAD
- PUBLIC UTILITY EASEMENT
- EXISTING LOT LINE

MATCH LINE SEE PAGE P3



Pacific Engineering Design, LLC
Civil Engineering and Planning Consultants

4180 LIND AVENUE S.W.
RENTON, WA 98055
PHONE: (425) 251-8811
FAX: (425) 251-8880
WEB SITE: PACENG.COM

LEANNE TERRACE

CITY OF MOSES LAKE, WA

FOR:
SMART HOMES
107 WASHINGTON
ALGONA, WA 98001
PHONE: (253) 833-7755, FAX: (253) 876-0530

PRELIMINARY PLAT EAST

PROJECT NO.: **05064**
DRAWN BY: **TLR**
ISSUE DATE: **07-29-05**
SHEET REV.:

05064HC01-P02.DWG

P02