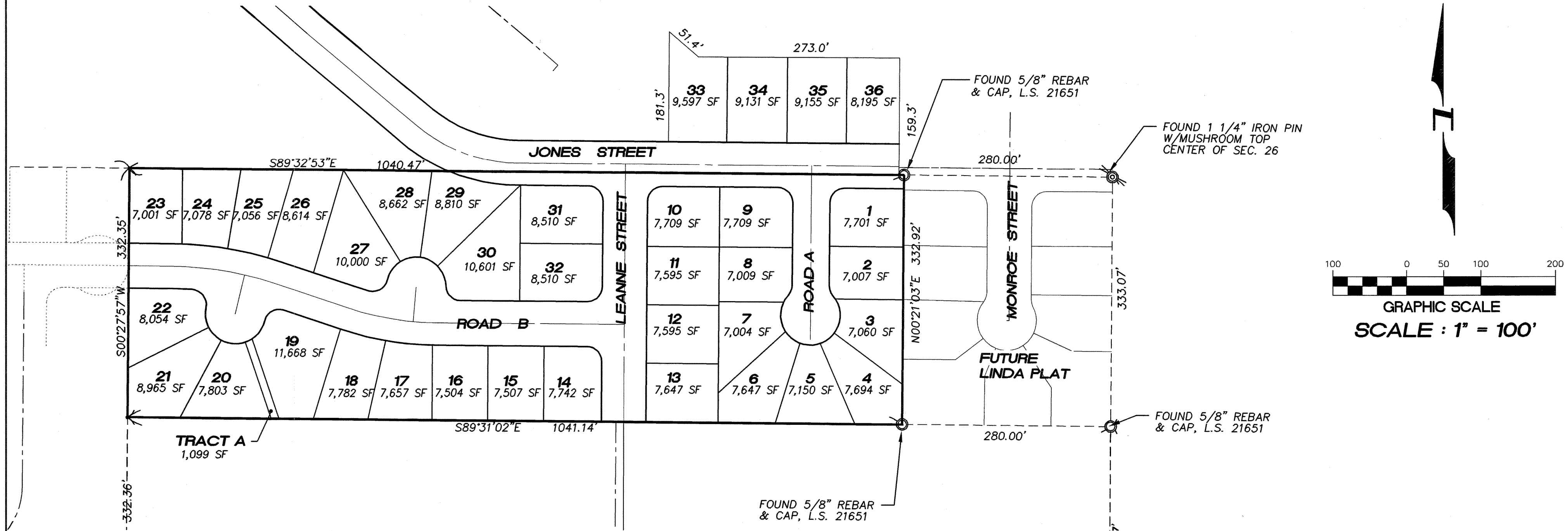


REVISIONS:

# A PORTION OF SW 1/4 SEC 26, TWP 19 N., RGE 28 E., W.M. GRANT COUNTY, WASHINGTON



## BASIS OF BEARINGS

THE BEARING N00°10'26"E ON THE WEST LINE OF THE NORTHEAST QUARTER OF SECTION 26 AS SHOWN ON THIS PLAT EQUALS THE BEARING FOR THE SAME LINE ON THE U.S.B.R. SECTION MAP.

## VERTICAL DATUM

THE U.S.B.R. BRASS CAP MONUMENT AT THE WEST QUARTER CORNER OF SECTION 26, HOLDS THE ELEVATION OF 1140.39 ACCORDING TO THE CITY OF MOSES LAKE RECORDS BASED ON U.S.B.R. DATUM, PER THE PLAT OF SOUTHGATE ADDITION 3 MAJOR PLAT.

## PUBLIC UTILITY EASEMENTS

PUBLIC UTILITY EASEMENTS ARE DEDICATED ON THIS PLAT, 5 FOOT WIDE, EITHER SIDE OF ALL INTERIOR LOT LINES AND 10 FOOT WIDE ALONG ALL STREET RIGHTS OF WAY.

## SURVEYOR:

**HANSEN SURVEYING**  
17420 116th. AVENUE S.E.,  
RENTON, WA 98058  
PHONE (425) 235-8440  
FAX (425) 235-0266

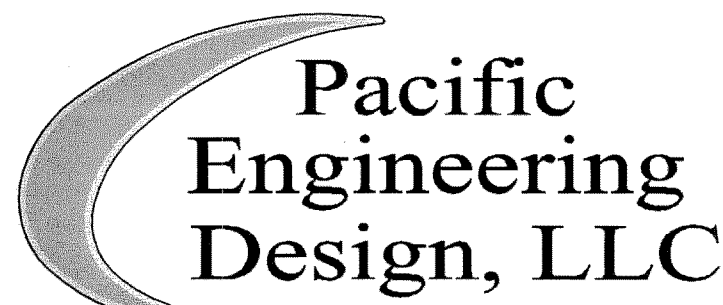
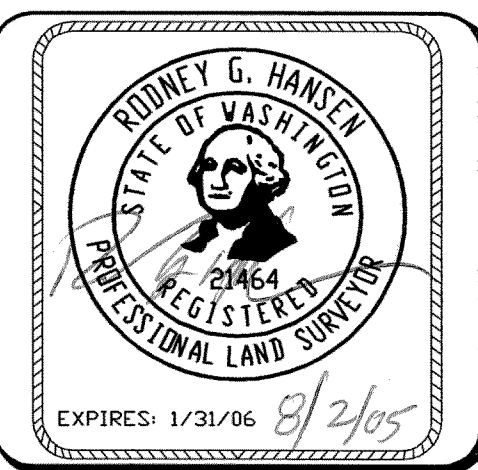
## LEGAL DESCRIPTION

THAT PORTION OF THE NORTHEAST QUARTER OF THE SOUTHWEST QUARTER OF SECTION 26, TOWNSHIP 19 NORTH, RANGE 28 E.W.M., GRANT COUNTY, WASHINGTON, DESCRIBED AS FOLLOWS:

BEGINNING AT A POINT THAT IS NORTH 89°31'06" WEST, 137.52 FEET FROM THE SOUTHEAST CORNER OF THE NORTHWEST QUARTER OF SAID SECTION 26; THENCE SOUTH 00°16'52" WEST, 30 FEET; THENCE NORTH 89°31'06" WEST, A DISTANCE OF 30 FEET; THENCE NORTH 00°16'52" EAST, 30 FEET; THENCE SOUTH 89°31'06" EAST, 30 FEET TO THE TRUE POINT OF BEGINNING.

## SHEET INDEX

- P01 PRELIMINARY PLAT COVER SHEET
- P02 PRELIMINARY PLAT EAST
- P03 PRELIMINARY PLAT WEST
- P04 PRELIMINARY PLAT SECTION BREAKDOWN/VICINITY MAP
- P05 PRELIMINARY PLAT COMPOSITE UTILITIES EAST
- P06 PRELIMINARY PLAT COMPOSITE UTILITIES WEST
- P07 PRELIMINARY PLAT 300' RADIUS MAP
- P08 PRELIMINARY PLAT STREET CROSS SECTION
- P09 EXISTING CONDITIONS



Civil Engineering and Planning Consultants

4180 LIND AVENUE S.W.  
RENTON, WA 98055  
PHONE:  
(425) 251-8811  
FAX:  
(425) 251-8880  
WEB SITE:  
PACENG.COM

## LEANNE TERRACE

CITY OF MOSES LAKE, WA

FOR:  
SMART HOMES  
107 WASHINGTON  
ALGONA, WA 98001  
PHONE: (253) 833-7755, FAX: (253) 876-0530

## PRELIMINARY PLAT COVER SHEET

PROJECT NO.: 05064

DRAWN BY: TLR

ISSUE DATE: 07-29-05

SHEET REV.:

05064HC01-P01.DWG

# P01