

PORTION OF THE SW 1/4 OF THE NW 1/4 OF SEC. 33, TWN. 24N., RGE. 5E., W.M.
CITY OF NEWCASTLE, WASHINGTON

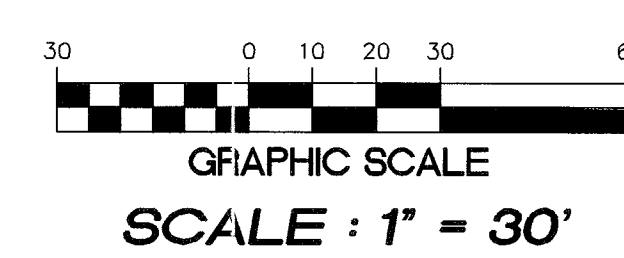
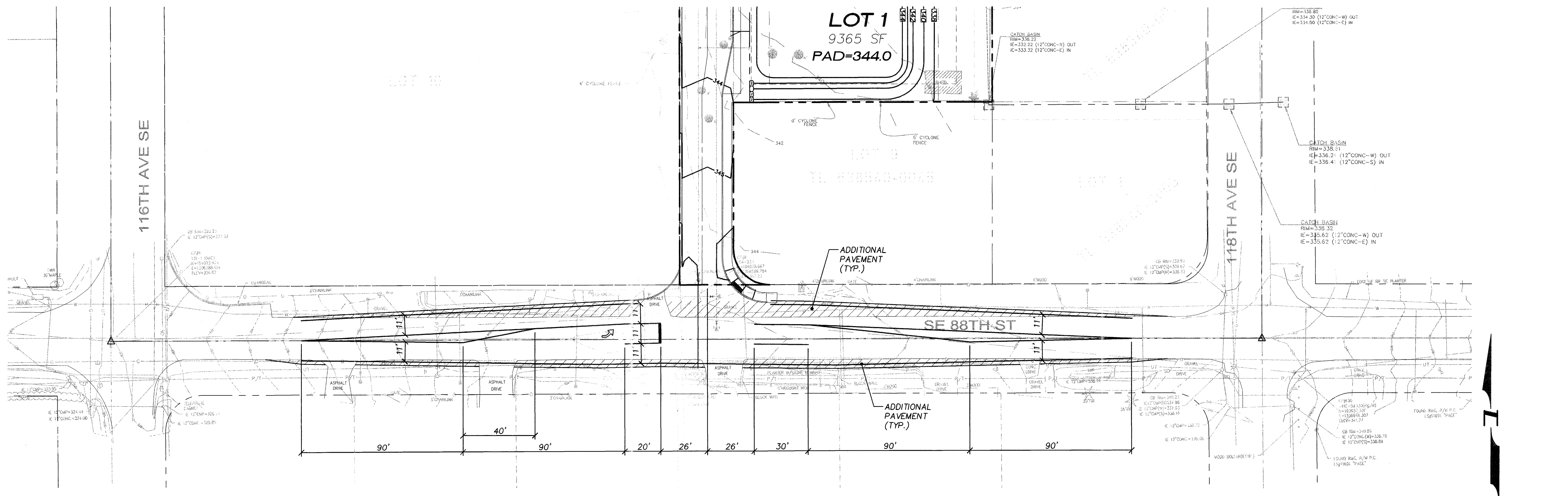
NOTE:
ALL TRAFFIC SIGNS, SIGN POSTS AND RELATED INSTALLATION
HARDWARE ARE TO BE FURNISHED AND INSTALLED BY THE
CITY OF NEWCASTLE.



15445 53RD AVE. S.
SEATTLE, WA 98188
PHONE: (206) 431-7970
FAX: (206) 388-1648
WEB SITE: PACENG.COM

**Pacific
Engineering
Design, LLC**

Civil Engineering and
Planning Consultants



LAWRENCE PARK (PRELIMINARY PLAT)
CITY OF NEWCASTLE

FOR:
MR. SCOTT CAMERON
BENT NOSE, LLC
4102ND AVENUE NE, SUITE 201
PHONE: (425) 452-9985

PROJECT NO.: **05119**
DRAWN BY: **JQC**
ISSUE DATE: **08-10-07**
SHEET REV.:

**PRELIMINARY
CHANNELIZATION
PLAN**

051190501-P08.DWG
P08

08/10/2007 15:28:48 051190501-P08 -AESB- By Xerox Corporation 11.0.3