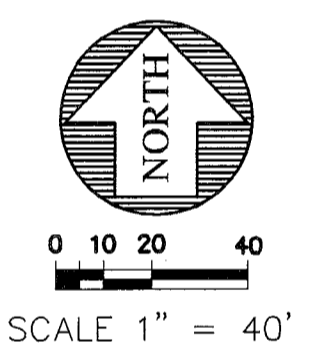
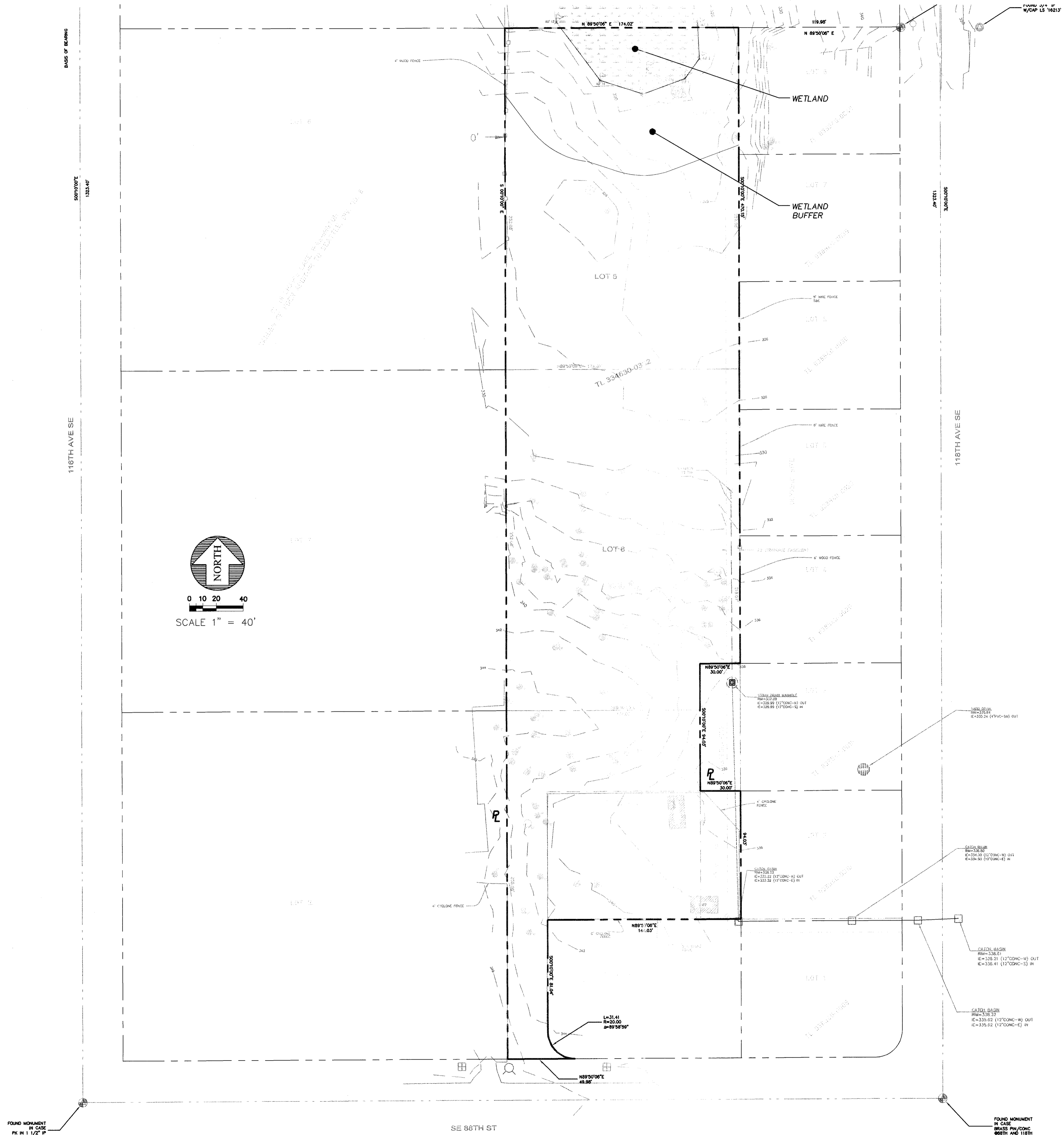


PORTION OF THE SW 1/4 OF THE NW 1/4 OF SEC. 33, TWN. 24N., RGE. 5E., W.M.  
CITY OF NEWCASTLE, WASHINGTON



**SURVEY INFORMATION PROVIDED BY:**  
BAMA & HOLMBERG INC.  
ENGINEERS & SURVEYORS  
100 FRONT STREET SOUTH  
ISSAQUAH, WA 98027  
PHONE (425) 392-0250  
FAX (425) 391-3055

15445 53RD AVE. S.,  
SEATTLE, WA 98188  
PHONE: (206) 431-7970  
FAX: (206) 388-1648  
WEB SITE: PACENG.COM

**Pacific Engineering Design, LLC**  
Civil Engineering and Planning Consultants

**LAWRENCE PARK (PRELIMINARY PLAT)**  
CITY OF NEWCASTLE

FOR:  
MR. SCOTT CAMERON  
BENT NOSE, LLC  
4-102ND AVENUE NE, SUITE 201  
ISSAQUAH, WA 98027  
PHONE: (425) 453-9985

PROJECT NO.: **05119**  
DRAWN BY: **VK**  
ISSUE DATE: **10-17-06**  
SHEET REV.: **08-10-07**

**EXISTING CONDITIONS PLAN**

05119EC01-P07.DWG  
**P07**

08/10/2007 15:28:52 05119EC01-P07 XES9 - by Xerox Corporation 11.0.3