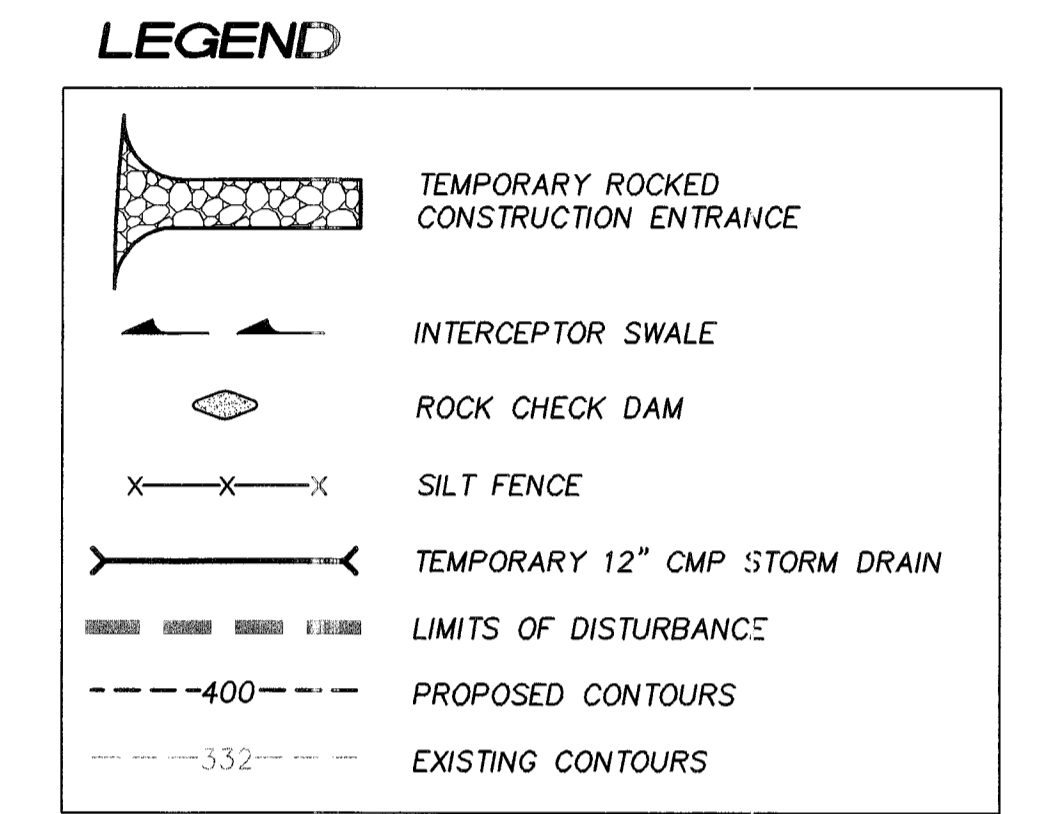
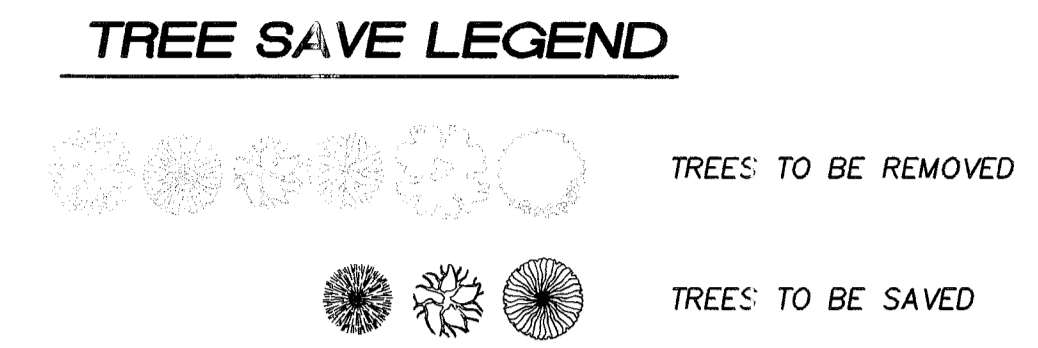
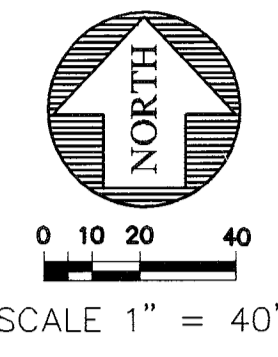
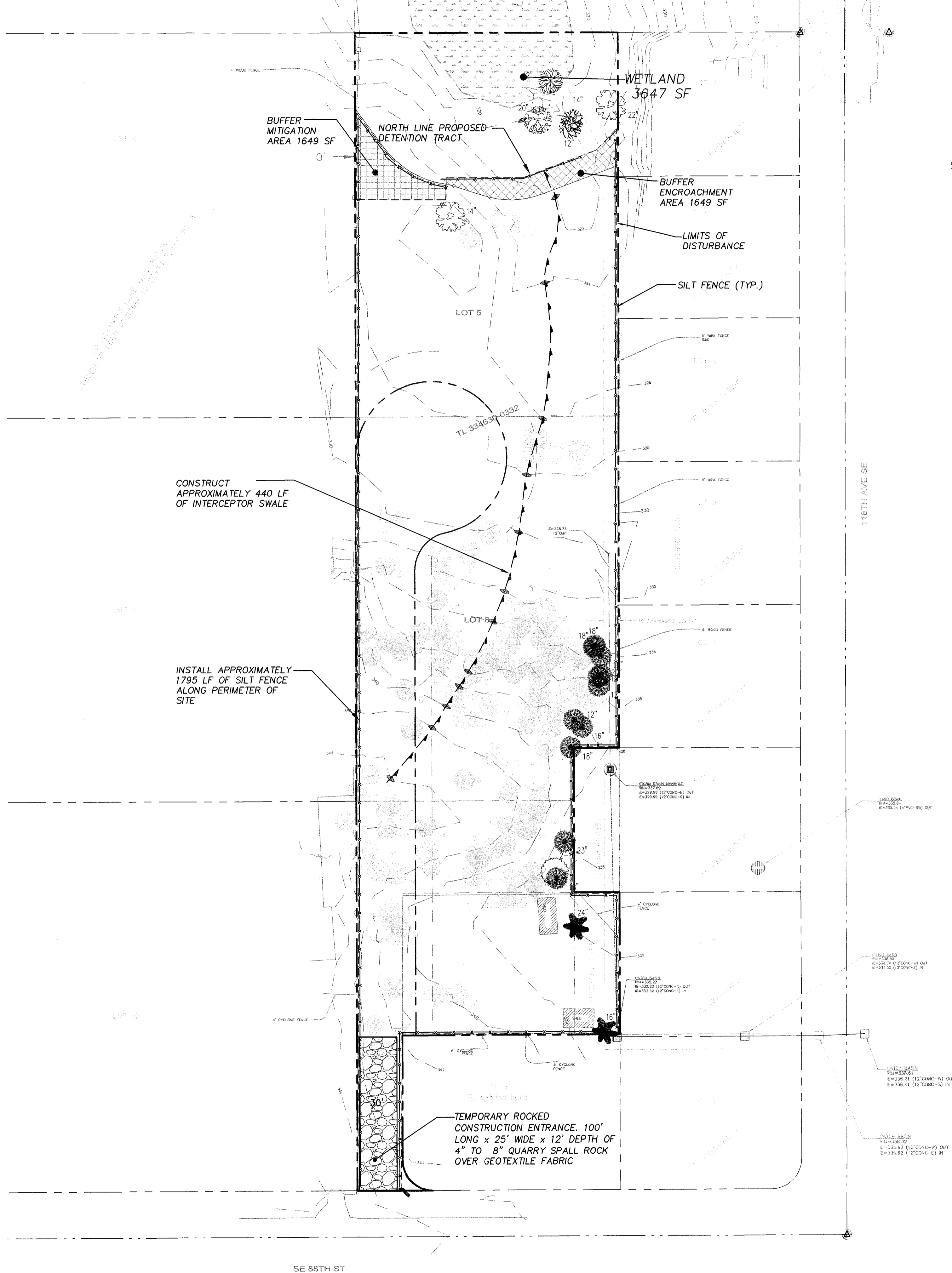


PORTION OF THE SW 1/4 OF THE NW 1/4 OF SEC. 33, TWN. 24N., RGE. 5E., W.M.  
CITY OF NEWCASTLE, WASHINGTON



15445 53RD AVE. S.  
SEATTLE, WA 98188  
PHONE: (206) 431-7970  
FAX: (206) 388-1648  
WEB SITE: PACENG.COM

**Pacific Engineering Design, LLC**  
Civil Engineering and Planning Consultants

**LAWRENCE PARK (PRELIMINARY PLAT)**  
CITY OF NEWCASTLE

FOR:  
MR. SCOTT CAMERON  
BENT NOSE, LLC  
4102ND AVENUE NE, SUITE 201  
LYNNWOOD, WA 98037  
PHONE: (425) 453-9885

PROJECT NO.: **05119**  
DRAWN BY: **TLR**  
ISSUE DATE: **10-17-06**  
SHEET REV.: **08-10-07**

**PRELIMINARY DEMOLITION AND TEMPORARY EROSION CONTROL PLAN**

05119TE01-P06.DWG  
**P06**

08/10/2007 15:28:56 05119TE01-P06 -XES3- by Xerox Corporation 11.0.3