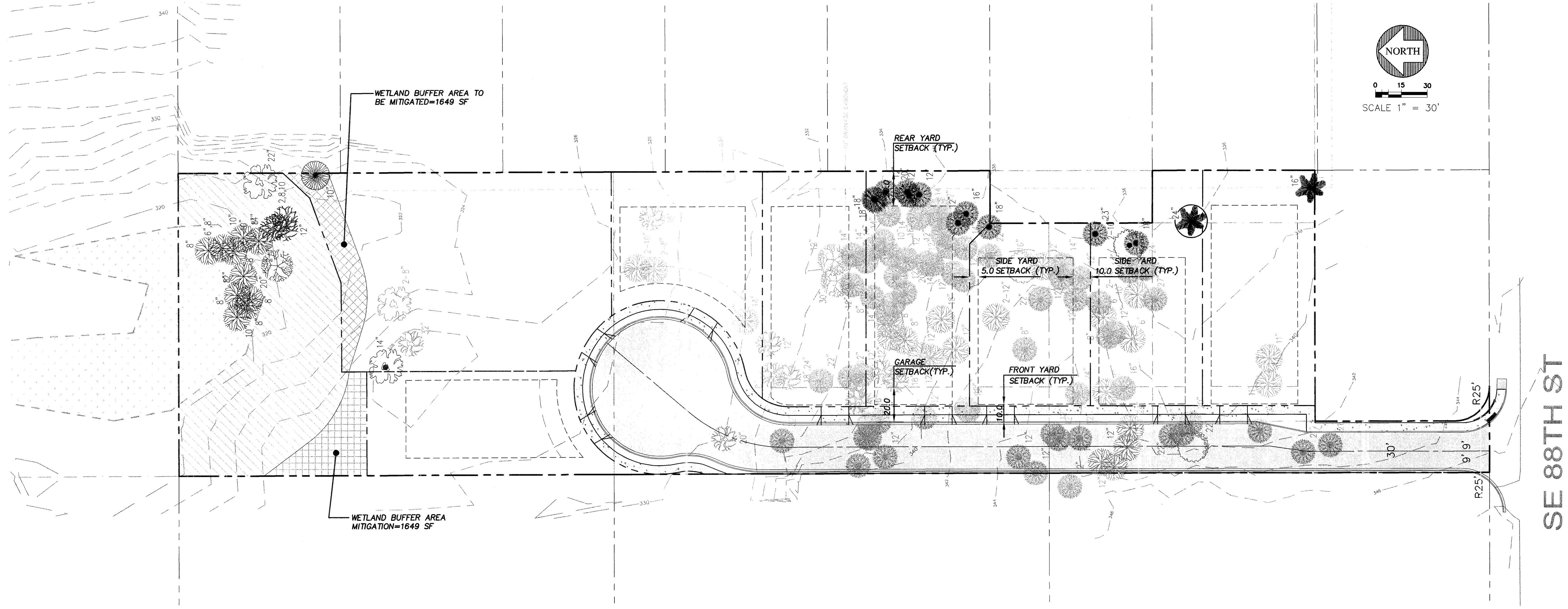


PORTION OF THE SW 1/4 OF THE NW 1/4 OF SEC. 33, TWN. 24N., RGE. 5E., W.M.
CITY OF NEWCASTLE, WASHINGTON



15445 53RD AVE. S.
SEATTLE, WA 98188
PHONE: (206) 431-7970
FAX: (206) 388-1648
WEB SITE: PACENG.COM

Pacific Engineering Design, LLC
Civil Engineering and Planning Consultants

LAWRENCE PARK (PRELIMINARY PLAT)
CITY OF NEWCASTLE

FOR:
MR. SCOTT CAMERON
BENT NOSE, LLC
4-102ND AVENUE NE, SUITE 201
SEATTLE, WA 98105
PHONE: (425) 453-9885

PROJECT NO.: **05119**
DRAWN BY: **VK**
ISSUE DATE: **10-17-06**
SHEET REV.: **08-10-07**

PRELIMINARY TREE RETENTION PLAN

05119TR01-P03.DWG

P03

TREE LEGEND

- PINE TREE
- FIR TREE
- MAPLE TREE
- FRUIT TREE
- ADLER TREE
- COTTONWOOD TREE
- CEDAR TREE
- DECIDUOUS TREE
- WILLOW TREE

TREE LEGEND (CONTINUED)

- DECIDUOUS
- CONIFER
- EXISTING SIGNIFICANT TREES TO BE REMOVED
- EXISTING SIGNIFICANT TREES TO BE SAVED
- EXISTING SIGNIFICANT SAVED TREES TO BE CREDITED AS TWO TREES FOR SIZE (24" DIA FOR EVERGREENS AND 30" DIA FOR DECIDUOUS TREES)

TREE RETENTION DATA

EXISTING SIGNIFICANT TREES ON SITE		111 TREES
TOTAL EXISTING SIGNIFICANT TREES DIAMETER		1716"
AVERAGE EXISTING SIGNIFICANT TREES DIAMETER	$1716/111 =$	15.46"
EXISTING SIGNIFICANT TREES INSIDE OF SENSITIVE AREA		5 TREES
EXISTING SIGNIFICANT TREES OUTSIDE OF SENSITIVE AREA	$111 - 5 =$	106
TOTAL TREES REQUIRED TO BE SAVED (25% OF TOTAL TREES OUTSIDE OF SENSITIVE AREA)	$106 * 0.25 =$	27 TREES
TREES PROPOSED TO BE SAVED		16 TREES
SIGNIFICANT TREE CREDIT EARNED		1
PROPOSED NUMBER OF REPLACEMENT TREES		10 TREES
TREE REPLACEMENT TOTAL	$15.46 * 10 = 154.6 * 2 = 309.2"$	3" CALIBER TREES $309.2 / 3' = 103.67$ (15 TREES PER LOT)

NOTES:

TREE RETENTION CALCULATIONS INCLUDE ADDITIONAL CREDIT FOR SIGNIFICANT TREES IN EXCESS OF 24" (EVERGREENS) AND 30" (DECIDUOUS), OR FOR TREES IN GROUPINGS OF 5 OR MORE WITH CONTINUOUS CANOPY COVERAGE AS REQUIREMENTS ARE MET ON A PERCENT BASIS WITHOUT THE NEED FOR ADDITIONAL CREDIT.

THIS TREE COUNT MAY BE MODIFIED AS A RESULT OF ADDITIONAL REVIEW BY AN ARBORIST TO DETERMINE A REVISED SIGNIFICANT TREE COUNT. MORE TREES MAY BE REMOVED THAN INDICATED IF THE TREES WITH ASSOCIATED DRIP LINES IMPOSE ON POTENTIAL HOUSE SITES.

ANY POTENTIAL DEFICIT IN THE SIGNIFICANT TREE COUNT IS PLANNED TO BE MITIGATED BY THE TREE REPLACEMENT IN APPROPRIATE AVAILABLE AREAS IN ACCORDANCE WITH CITY CODE.

TREE CLEARING AND REMOVAL SPECIFICATIONS PER CITY/ARBORIST RECOMMENDATIONS SHALL BE INCLUDED IN FINAL CONSTRUCTION PLANS.

08/10/2007 15:29:06 05119TR01-P03 XES38 - by Xerox Corporation 11.0.3