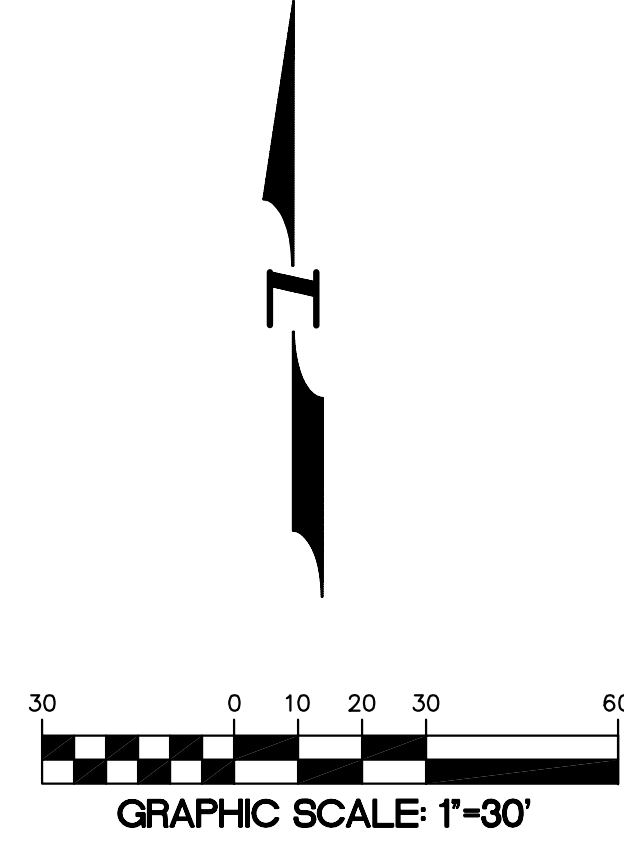
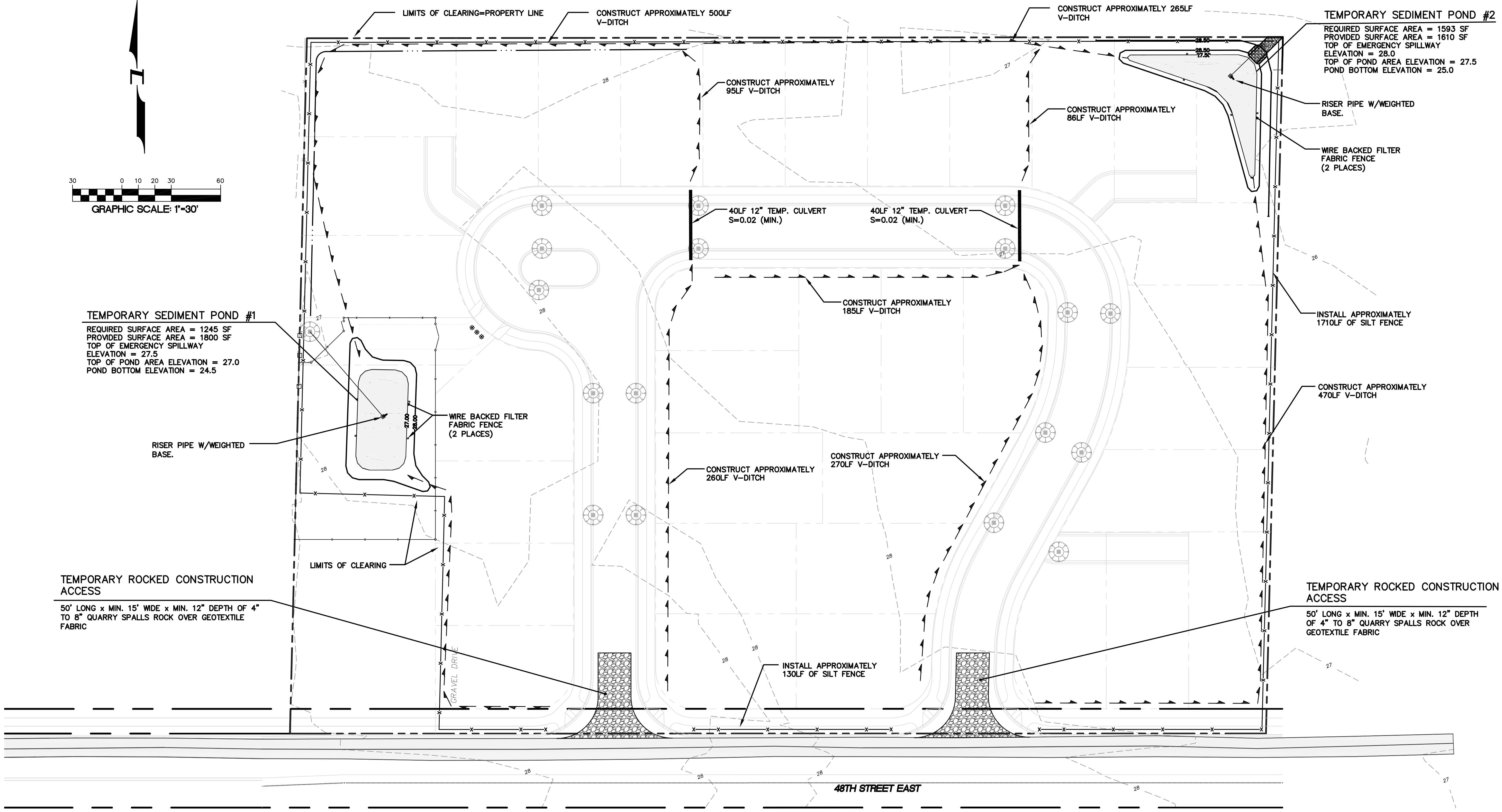


A PORTION OF SOUTHWEST 1/4 OF SOUTHWEST 1/4 SEC. 17, T. 20 N., R. 4 E., W.M.



**TEMPORARY SEDIMENT POND #1**  
 REQUIRED SURFACE AREA = 1245 SF  
 PROVIDED SURFACE AREA = 1800 SF  
 TOP OF EMERGENCY SPILLWAY ELEVATION = 27.5  
 TOP OF POND AREA ELEVATION = 27.0  
 POND BOTTOM ELEVATION = 24.5

**TEMPORARY SEDIMENT POND #2**  
 REQUIRED SURFACE AREA = 1593 SF  
 PROVIDED SURFACE AREA = 1610 SF  
 TOP OF EMERGENCY SPILLWAY ELEVATION = 28.0  
 TOP OF POND AREA ELEVATION = 27.5  
 POND BOTTOM ELEVATION = 25.0



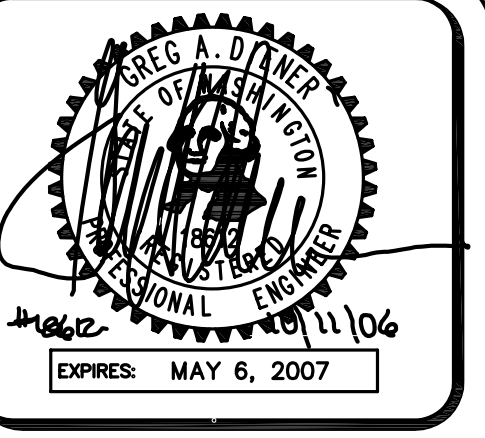
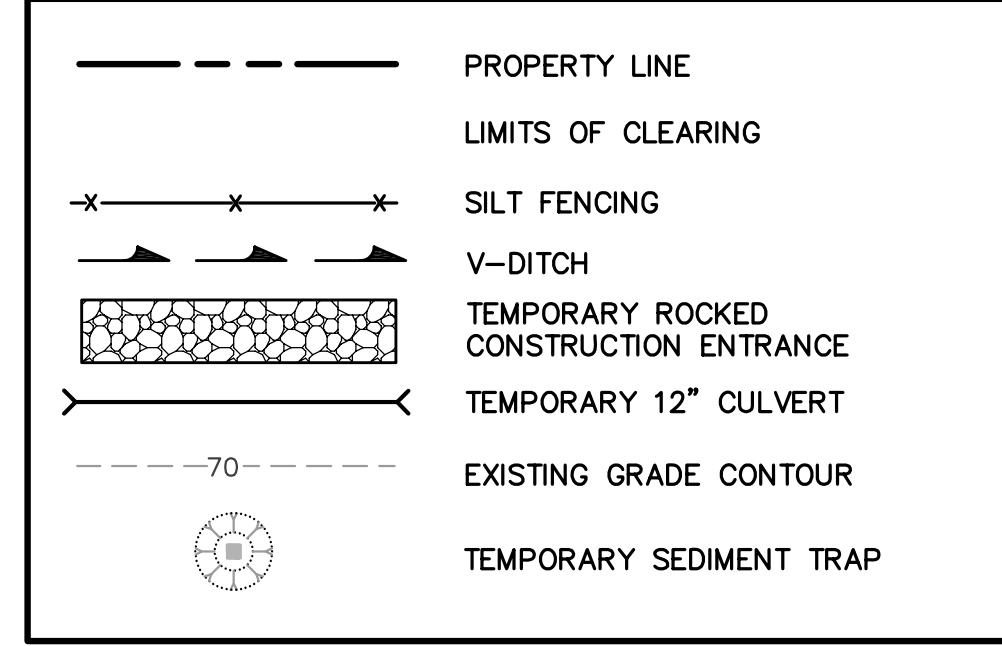
**TEMPORARY ROCKED CONSTRUCTION ACCESS**  
 50' LONG x MIN. 15' WIDE x MIN. 12" DEPTH OF 4" TO 8" QUARRY SPALLS ROCK OVER GEOTEXTILE FABRIC

**TEMPORARY ROCKED CONSTRUCTION ACCESS**  
 50' LONG x MIN. 15' WIDE x MIN. 12" DEPTH OF 4" TO 8" QUARRY SPALLS ROCK OVER GEOTEXTILE FABRIC

**CONSTRUCTION SEQUENCE**

1. STAKE AND FLAG LIMITS OF CLEARING
2. CLEAR AND GRUB SITE
3. CONSTRUCT TEMPORARY ROCKED CONSTRUCTION ACCESSSES.
4. INSTALL SILT FENCING
5. CONSTRUCT TEMPORARY SEDIMENT PONDS.
6. CUT IN V-DITCH TO DIRECT SURFACE RUNOFF TO SEDIMENT PONDS.
7. GRADE ROADWAYS AND BUILDING PAD AREAS.
8. INSTALL REMAINDER OF UTILITY SYSTEMS
9. PAVE ROADWAYS.
10. INSTALL SIDEWALKS AND CURBS.
11. REMOVE SILT FENCING AND LANDSCAPE IMMEDIATELY.

**LEGEND**



15445 53RD AVE. S  
 SEATTLE, WA 98188  
 PHONE: (206) 431-7970  
 FAX: (206) 388-1648  
 WEB SITE: PACENG.COM

**Pacific Engineering Design, LLC**  
 Civil Engineering and Planning Consultants

**FOXBORO PLAT**  
 CITY OF FIFE  
 FOR: MARTY AND CHARLOTTE POTTER  
 FIFE, WA 98424  
 PHONE: (253) 926-5481

PROJECT NO.: **04090**  
 DRAWN BY: **VK**  
 ISSUE DATE: **10-11-06**  
 SHEET REV.:

**TEMPORARY EROSION/SEDIMENTATION CONTROL PLAN**

04090E01-P04.dwg  
**P04**