

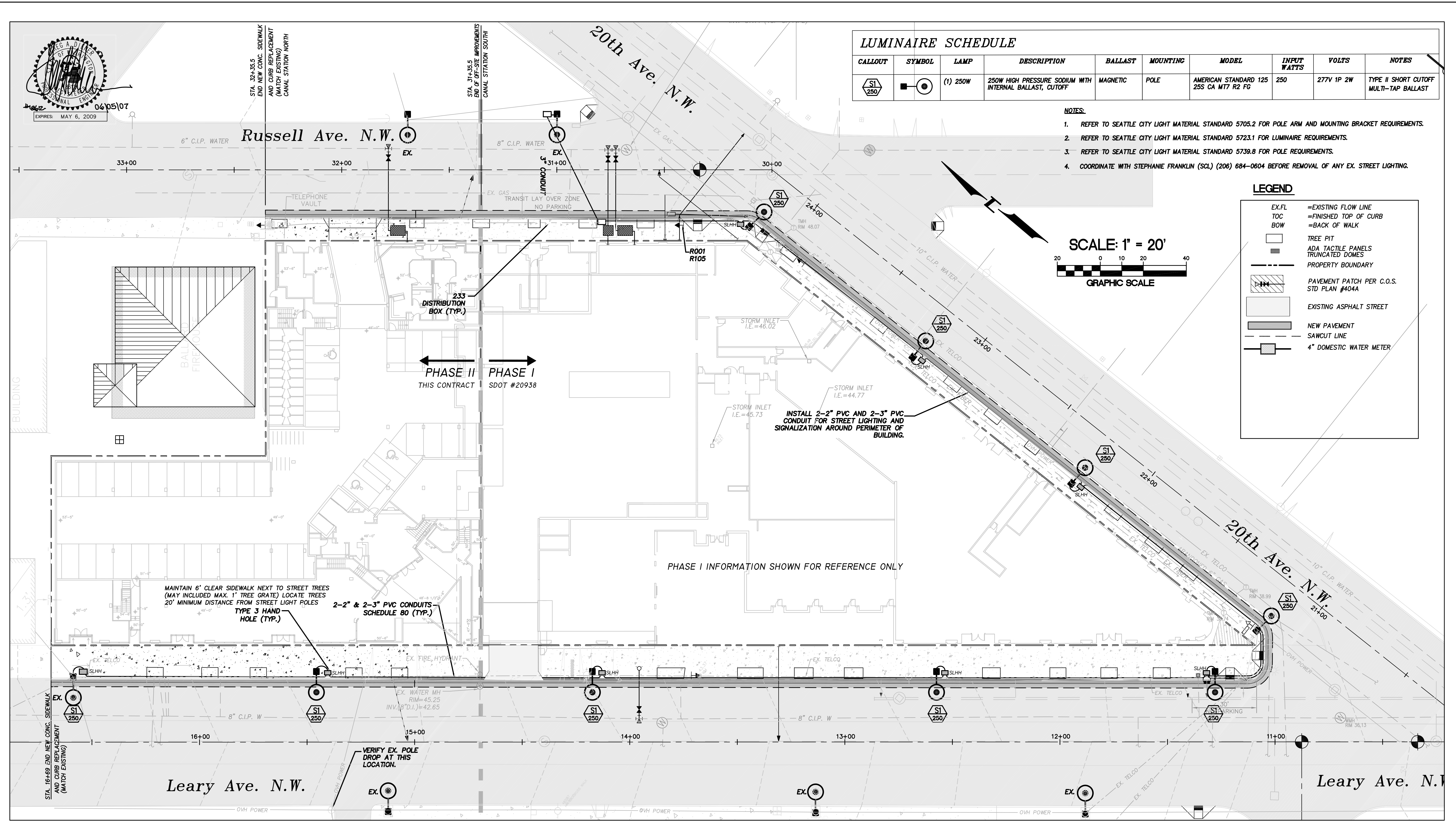
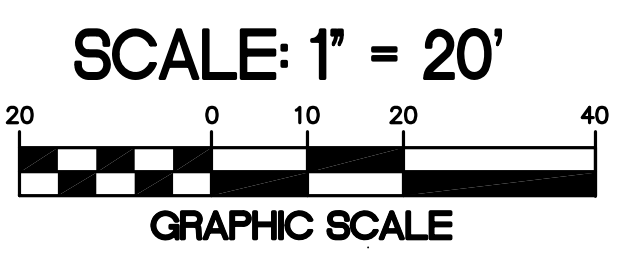
LUMINAIRE SCHEDULE

CALLOUT	SYMBOL	LAMP	DESCRIPTION	BALLAST	MOUNTING	MODEL	INPUT WATTS	VOLTS	NOTES
SI 250		(1) 250W	250W HIGH PRESSURE SODIUM WITH INTERNAL BALLAST, CUTOFF	MAGNETIC	POLE	AMERICAN STANDARD 125 25S CA M17 R2 FG	250	277V 1P 2W	TYPE II SHORT CUTOFF MULTI-TAP BALLAST

- NOTES:**
- REFER TO SEATTLE CITY LIGHT MATERIAL STANDARD 5705.2 FOR POLE ARM AND MOUNTING BRACKET REQUIREMENTS.
 - REFER TO SEATTLE CITY LIGHT MATERIAL STANDARD 5723.1 FOR LUMINAIRE REQUIREMENTS.
 - REFER TO SEATTLE CITY LIGHT MATERIAL STANDARD 5739.8 FOR POLE REQUIREMENTS.
 - COORDINATE WITH STEPHANIE FRANKLIN (SCL) (206) 684-0604 BEFORE REMOVAL OF ANY EX. STREET LIGHTING.

LEGEND

EX.FL	=EXISTING FLOW LINE
TOC	=FINISHED TOP OF CURB
BOW	=BACK OF WALK
	TREE PIT
	ADA TACTILE PANELS TRUNCATED DOMES
	PROPERTY BOUNDARY
	PAVEMENT PATCH PER C.O.S. STD PLAN #404A
	EXISTING ASPHALT STREET
	NEW PAVEMENT
	SAWCUT LINE
	4" DOMESTIC WATER METER



MADE CH'D	REV'D
NATURE	REVISIONS
DATE	MARK
VAULT SERIAL NO.	34380

Pacific Engineering Design, LLC
 Civil Engineering & Planning Consultants
 15445 53rd Ave. South
 Seattle, WA 98188
 PHONE: (206) 431-7970
 FAX: (206) 388-1648
 WEB SITE: www.paceng.com

NAME OR INITIALS AND DATE DESIGNED: L. LARSEN CHECKED: G. DIENER DRAWN: D. WHITE CHECKED: G. DIENER DESIGN REVIEW:	INITIALS AND DATE REVIEWED: PLAN REVIEW ANALYST..... PLAN REVIEW SEC. MGR..... RECEIVED: REVISED AS-BUILT.....
---	---

City of Seattle
Seattle Department of Transportation
 WORK ORDER NO. TWS7863 SPU W/O# - NS 50118
 PERMIT NO. Z2560 APPROVED
 SCALE: H.1"=20' V.1"=5' INSPECTOR'S BOOK

Leary Ave. N.W.
 Street Lighting Plan
 Street Improvement Plan/Profile

SDOT PROJECT NO. 49511
VAULT PLAN NO. 774-402
SHEET 5 OF 9