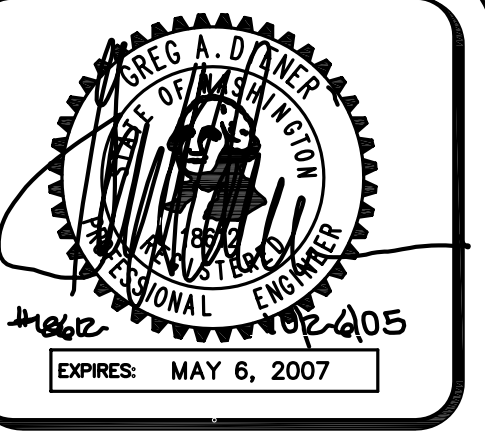


A PORTION OF SEC 29, TWP 19, RGE 28, W.M. GRANT COUNTY, WASHINGTON



4180 LIND AVE. S.W.
 RENTON, WA 98055
 PHONE: (425) 251-8811
 FAX: (425) 251-8880
 WEB SITE: PACENG.COM

Pacific Engineering Design, LLC
 Civil Engineering and Planning Consultants

BLUFF WEST
 MOSES LAKE, WA

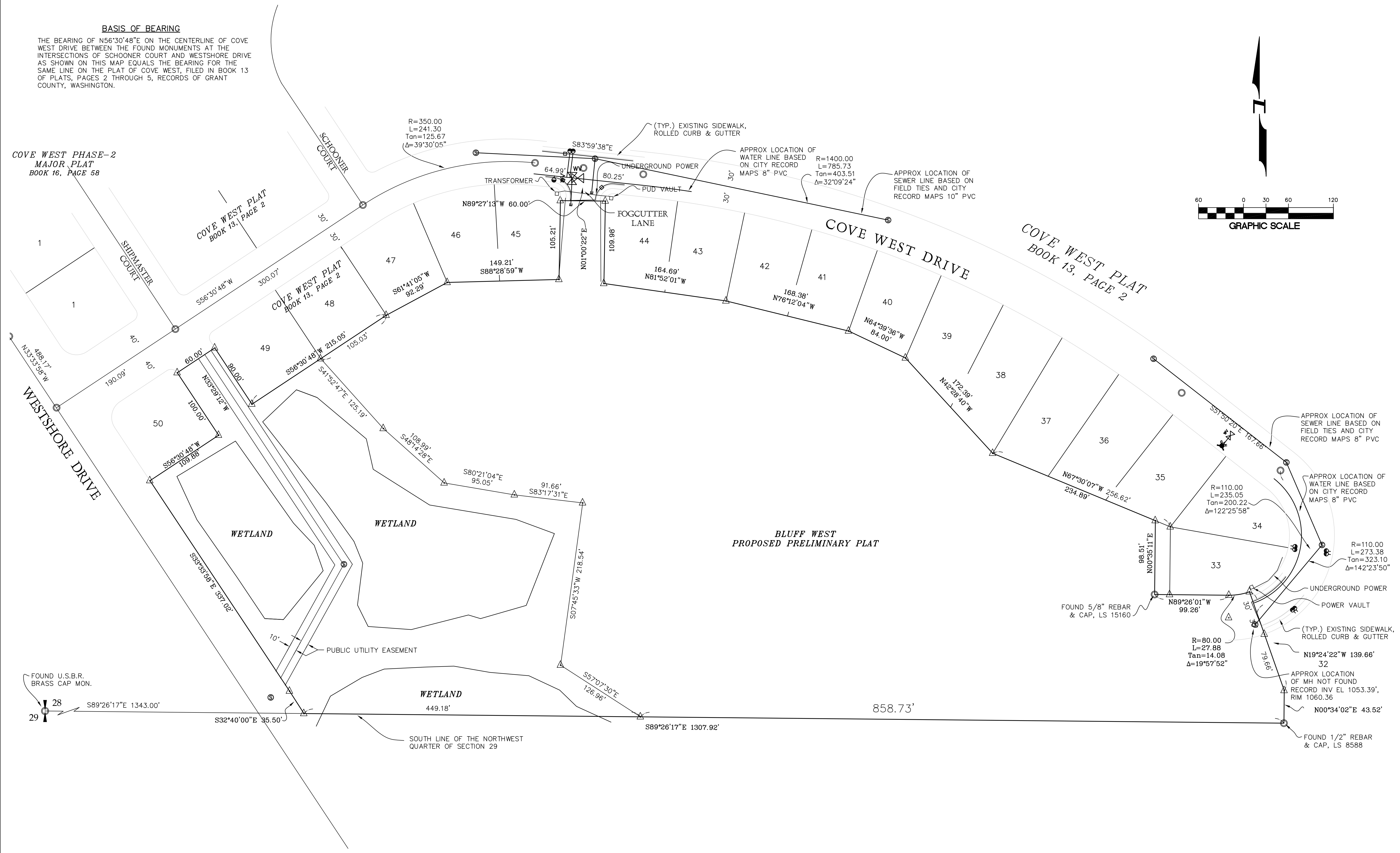
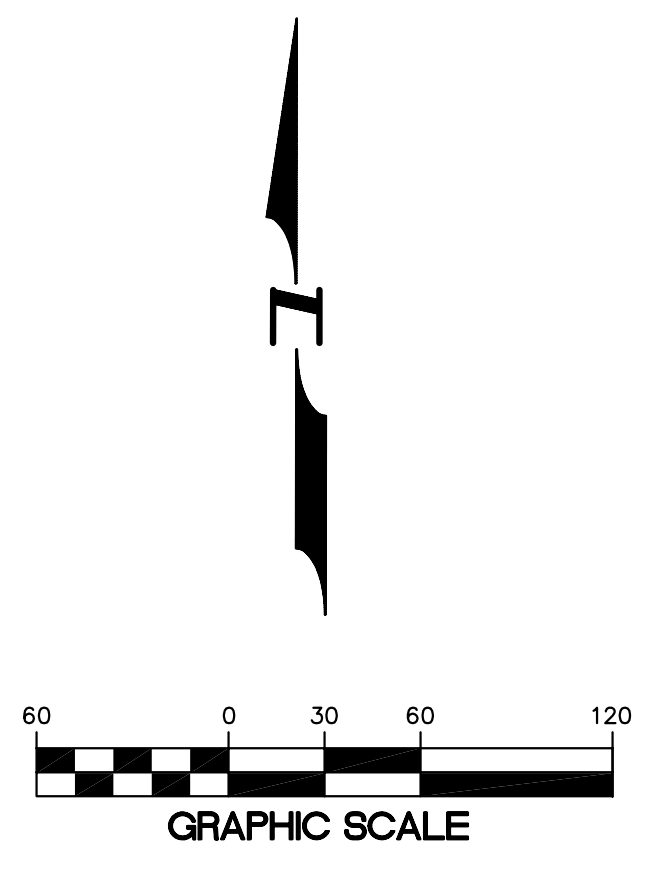
FOR: SMART HOMES
 11001 N ALCONA, WA 98001
 PHONE: (253) 833-7755, FAX: (253) 876-0530

PROJECT NO.: **05063**
 DRAWN BY: **TLR**
 ISSUE DATE: **10-26-05**
 SHEET REV.:

EXISTING CONDITIONS

05063EC01-C16.DWG
C16

BASIS OF BEARING
 THE BEARING OF N56°30'48"E ON THE CENTERLINE OF COVE WEST DRIVE BETWEEN THE FOUND MONUMENTS AT THE INTERSECTIONS OF SCHOONER COURT AND WESTSHORE DRIVE AS SHOWN ON THIS MAP EQUALS THE BEARING FOR THE SAME LINE ON THE PLAT OF COVE WEST, FILED IN BOOK 13 OF PLATS, PAGES 2 THROUGH 5, RECORDS OF GRANT COUNTY, WASHINGTON.



VERTICAL DATUM

THE U.S.B.R. BRASS CAP MONUMENT AT THE WEST QUARTER CORNER OF SECTION 26, HOLDS THE ELEVATION OF 1140.39 ACCORDING TO THE CITY OF MOSES LAKE RECORDS BASED ON U.S.B.R. DATUM, PER THE PLAT OF SOUTHGATE ADDITION 3 MAJOR PLAT.

SURVEYOR:

HANSEN SURVEYING
 16710 116th. AVENUE S.E., SUITE A-4
 RENTON, WA 98058
 PHONE (425) 235-8440
 FAX (425) 235-0266

TOPOGRAPHICAL SURVEY:

BY COLUMBIA NORTHWEST ENGINEERING P.S.
 MOSES LAKE, WA