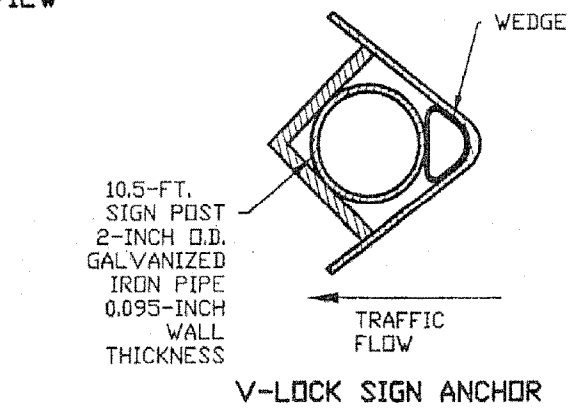


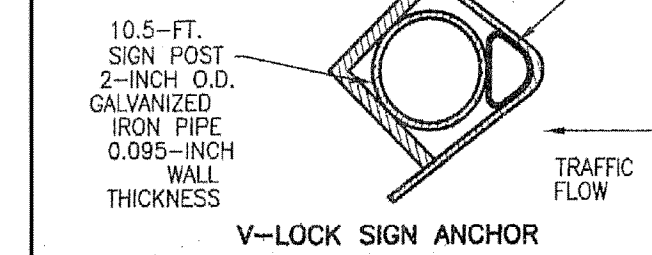
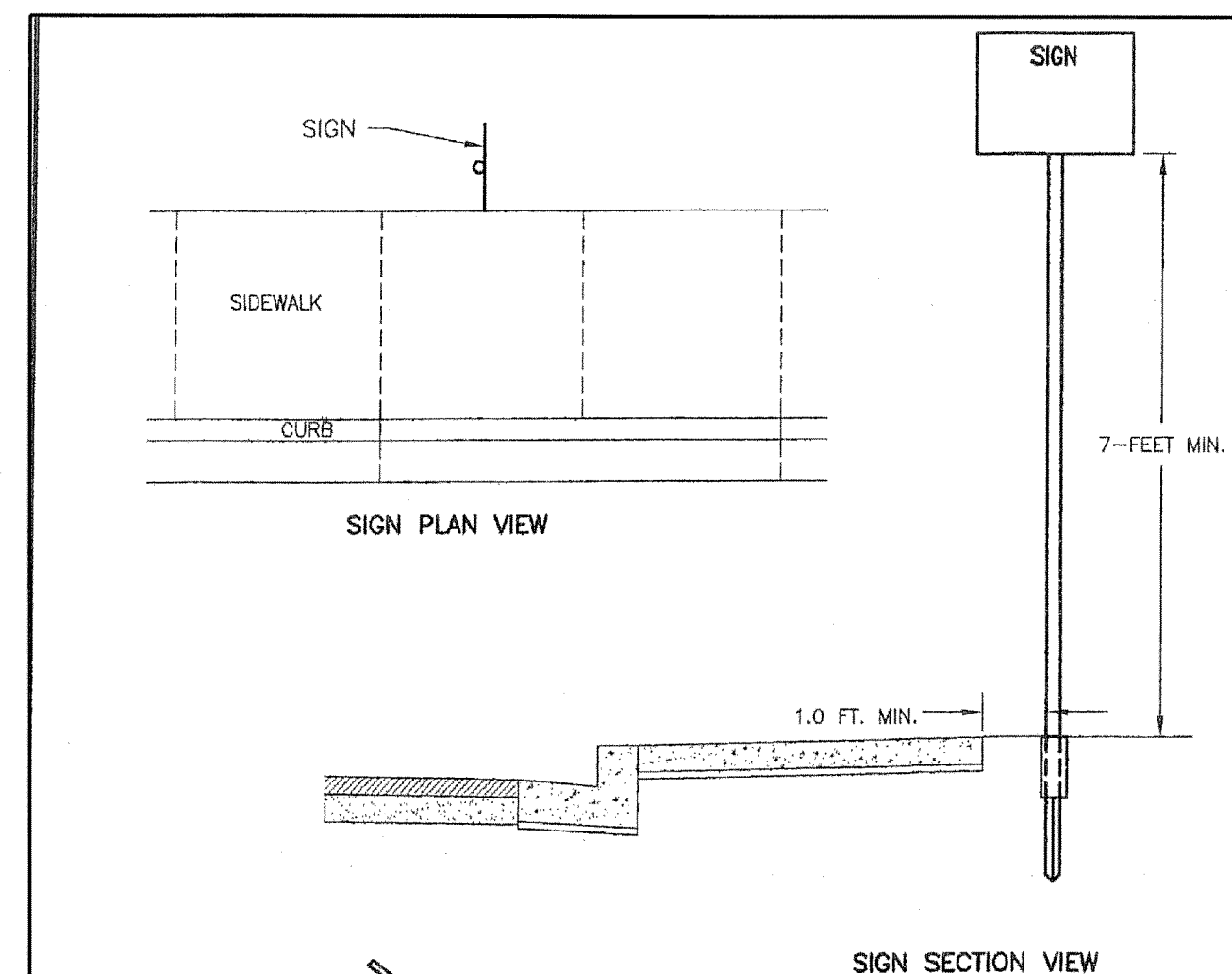
- NOTES:**
- V-LOCK SIGN ANCHORS AND WEDGES WILL BE SUPPLIED BY THE CITY.
  - MAINTAIN A MINIMUM OF 1 FOOT OF CLEARANCE BETWEEN THE SIGN POST AND THE BACK EDGE OF THE SIDEWALK.
  - WHEN V-LOCK SIGN ANCHORS ARE INSTALLED IN AREA OF PRE-EXISTING SIDEWALKS, THE SIDEWALK MUST BE REMOVED IN 5-FOOT PANELS AND WIDENED PER THIS DETAIL.
  - STOP SIGNS WILL BE TYPICALLY PLACED 14 FEET FROM THE FACE OF THE CURB ON THE STREET THEY APPROACH. EXACT LOCATION OF THE SIGN AND ANCHOR WILL BE ESTABLISHED BY THE CITY AT THE TIME OF INSTALLATION.
  - ALL CONSTRUCTION AND MATERIALS SHALL MEET THE SPECIFICATIONS AND BE APPROVED BY THE CITY OF MOSES LAKE.



**STOP SIGN INSTALLATION**

DATE	REVISION	BY
02-04	MISCELLANEOUS	RLP

MUNICIPAL SERVICES DEPT. - ENGINEERING DIVISION  
CITY OF MOSES LAKE  
DRAWN BY: RL  
CHECKED BY: RL  
SCALE: NONE  
DATE: 02-04

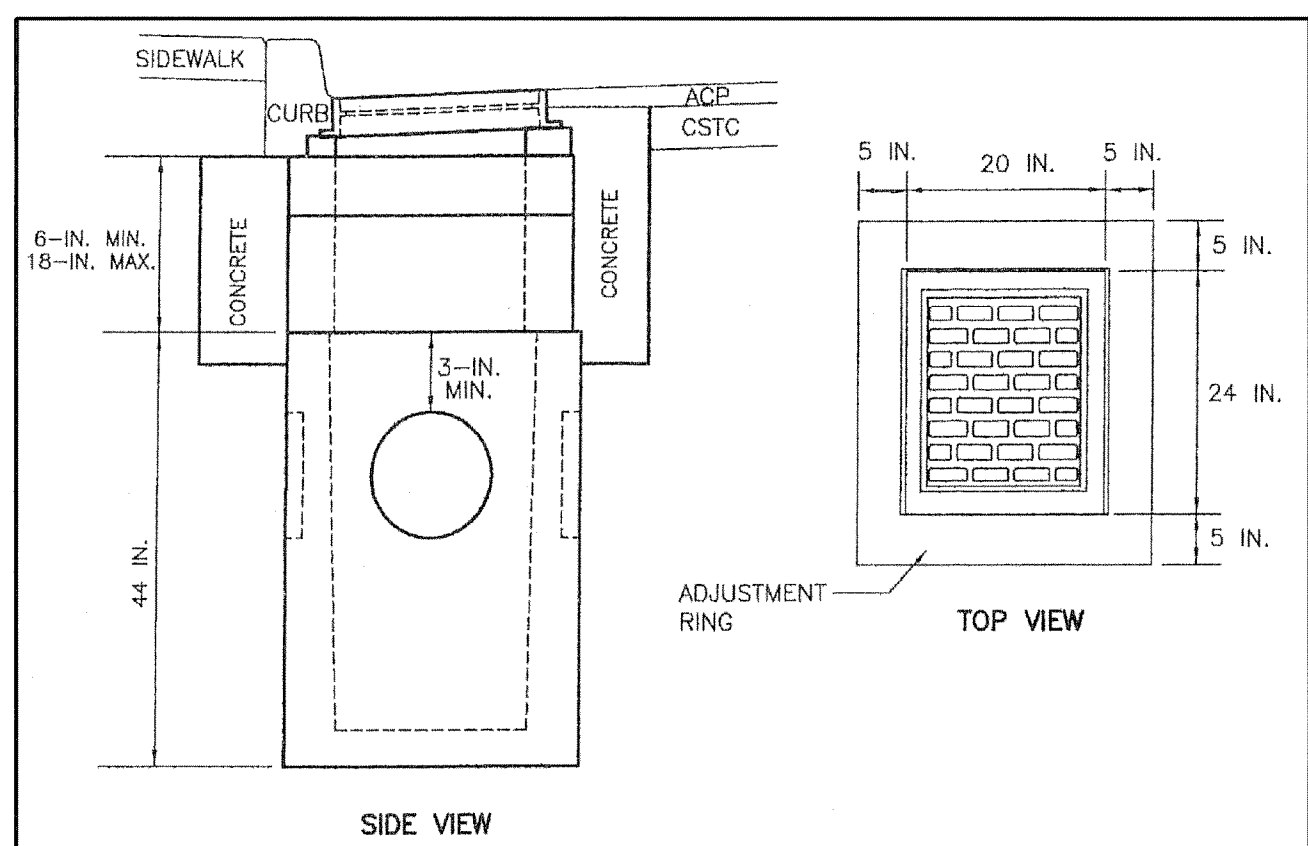


- NOTES:**
- EXACT LOCATION OF THE SIGN AND ANCHOR WILL BE ESTABLISHED BY THE CITY AT THE TIME OF INSTALLATION.
  - V-LOCK SIGN ANCHORS AND WEDGES WILL BE SUPPLIED BY THE CITY.
  - NO PORTION OF THE SIGN SHALL OVERHANG THE SIDEWALK.
  - ALL CONSTRUCTION AND MATERIALS SHALL MEET THE SPECIFICATIONS AND BE APPROVED BY THE CITY OF MOSES LAKE.

**STREET SIGN INSTALLATION**

DATE	REVISION	BY
02-04	MISCELLANEOUS	RLP

MUNICIPAL SERVICES DEPT. - ENGINEERING DIVISION  
CITY OF MOSES LAKE  
DRAWN BY: RL  
CHECKED BY: RL  
SCALE: NONE  
DATE: 02-04

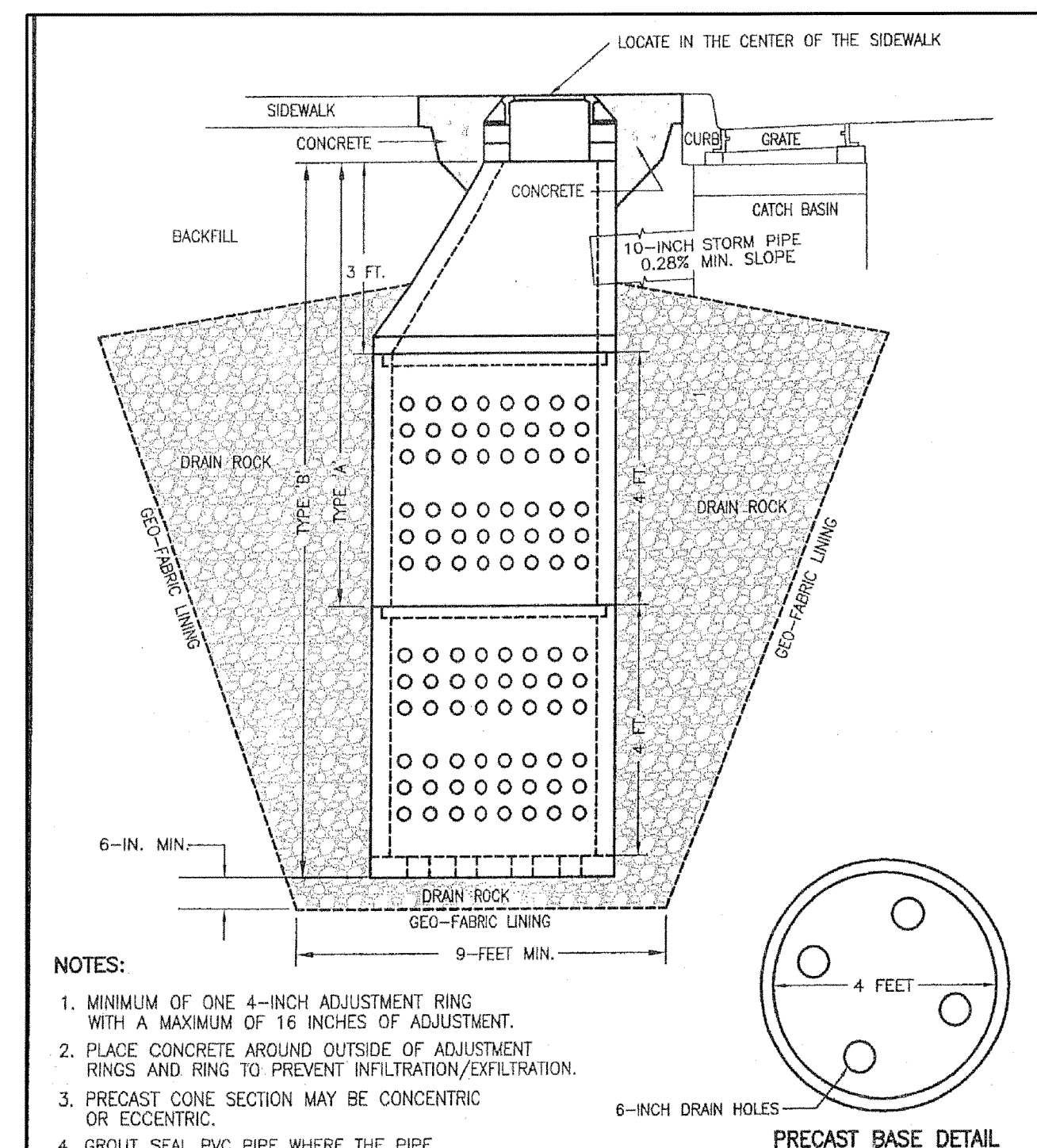


- NOTES:**
- CATCH BASINS SHALL BE CONSTRUCTED IN ACCORDANCE WITH ASTM C 478 (ASHTO M 199) AND ASTM C 890.
  - PRECAST BASES SHALL BE FURNISHED WITH FOUR CUTOUTS OR KNOCKOUTS. KNOCKOUTS SHALL HAVE A MINIMUM WALL THICKNESS OF 2 INCHES.
  - THE CATCH BASIN SHALL BE INSTALLED SO THE LONG SIDE (34 INCHES) IS PARALLEL WITH THE CURB. THE DISTANCE FROM THE CENTER LINE OF THE CATCH BASIN TO THE BACK EDGE OF THE CURB IS 18 INCHES FOR A 30-INCH BY 34-INCH CATCH BASIN.
  - AN ENTRY COUPLING OR SAND COLLAR IS REQUIRED FOR PVC PIPE WHERE THE PIPE PENETRATES THE CATCH BASIN BASE.
  - MAXIMUM DEPTH FROM PIPE INVERT TO FINISH GRADE IS 5 FEET.
  - MINIMUM COVER FROM TOP OF PIPE TO FINISH GRADE UNDER SIDEWALKS IS 2 FEET. MINIMUM COVER FROM TOP OF PIPE TO FINISH GRADE UNDER ROADWAYS IS 3 FOOT FOR PVC PIPE AND 18 INCHES FOR DUCTILE IRON PIPE.
  - ADJUSTMENT RINGS AND THE CATCH BASIN GRATE SHALL BE WITHIN ONE INCH OF THE VERTICAL ALIGNMENT OF THE CATCH BASIN. PLACE CONCRETE AROUND OUTSIDE OF ADJUSTMENT RINGS AND GRATE TO PREVENT INFILTRATION OR EXFILTRATION.
  - ALL CONSTRUCTION AND MATERIALS SHALL MEET THE SPECIFICATIONS AND BE APPROVED BY THE CITY OF MOSES LAKE.

**CATCH BASIN TYPE 1**

DATE	REVISION	BY
02-04	MISCELLANEOUS	RLP

MUNICIPAL SERVICES DEPT. - ENGINEERING DIVISION  
CITY OF MOSES LAKE  
DRAWN BY: RL  
CHECKED BY: RL  
SCALE: NONE  
DATE: 02-04



- NOTES:**
- MINIMUM OF ONE 4-INCH ADJUSTMENT RING WITH A MAXIMUM OF 16 INCHES OF ADJUSTMENT.
  - PLACE CONCRETE AROUND OUTSIDE OF ADJUSTMENT RINGS AND RING TO PREVENT INFILTRATION/EXFILTRATION.
  - PRECAST CONE SECTION MAY BE CONCENTRIC OR ECCENTRIC.
  - GROUT SEAL PVC PIPE WHERE THE PIPE PENETRATES THE DRYWELL.
  - DRYWELLS NOT IN SIDEWALK SHALL BE PLACED IN A 6-FT. BY 6-FT. BY 6-IN. CONCRETE PAD AT FINISH GRADE.
  - STORM PIPE SHALL BE A MINIMUM OF 18 FEET IN LENGTH.
  - "DRAIN" SHALL BE CAST IN THE LID.
  - ALL CONSTRUCTION AND MATERIALS SHALL MEET THE SPECIFICATIONS AND BE APPROVED BY THE CITY OF MOSES LAKE.

**48-INCH PRECAST CONCRETE DRYWELL**

DATE	REVISION	BY
02-04	MISCELLANEOUS	RLP

MUNICIPAL SERVICES DEPT. - ENGINEERING DIVISION  
CITY OF MOSES LAKE  
DRAWN BY: RL  
CHECKED BY: RL  
SCALE: NONE  
DATE: 02-04



480 LIND AVE. S.W.  
RENTON, WA 98055  
PHONE: (425) 251-8811  
FAX: (425) 251-8880  
WEB SITE: PACENG.COM

**Pacific Engineering Design, LLC**  
Civil Engineering and Planning Consultants

**BLUFF WEST**  
MOSES LAKE, WA

FOR: SMART HOMES  
107 WASHINGTON  
ALGONA, WA 98001  
PHONE: (253) 853-7755, FAX: (253) 876-0550

PROJECT NO.: **05063**  
DRAWN BY: **TLR**  
ISSUE DATE: **10-26-05**  
SHEET REV.:

**ROAD DETAILS**

050630T01-C13-C14.DWG  
**C14**