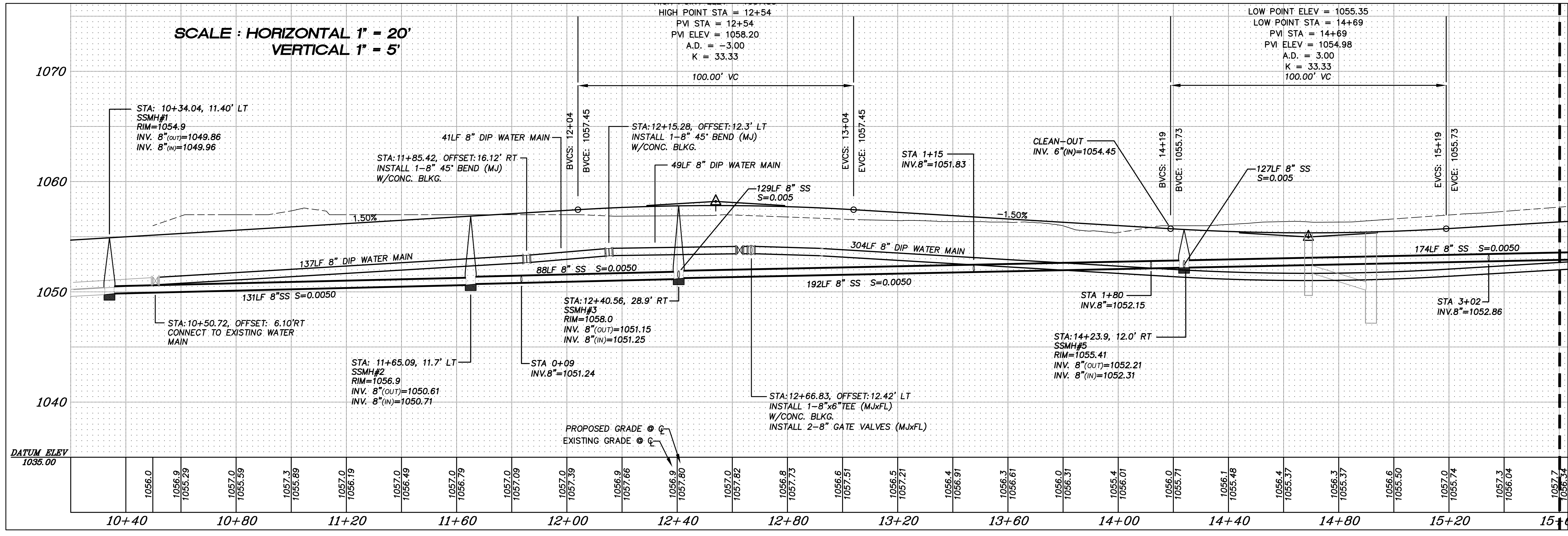
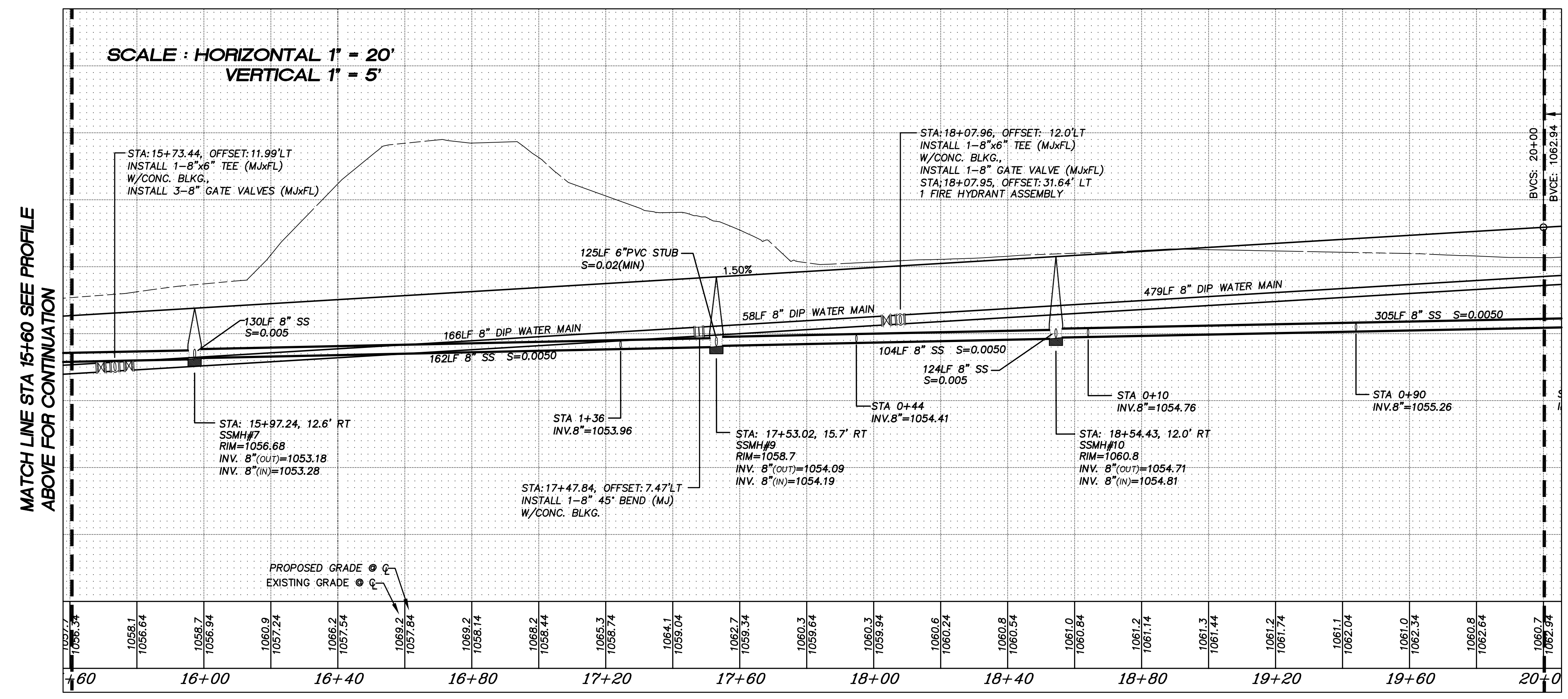


### A PORTION OF SEC 29, TWP 19, RGE 28, W.M. GRANT COUNTY, WASHINGTON



### ROAD A

MATCH LINE STA 15+60 SEE PROFILE BELOW FOR CONTINUATION



### ROAD A

MATCH LINE STA 15+60 SEE PROFILE ABOVE FOR CONTINUATION

MATCH LINE STA 20+00 SEE PROFILE SHEET C12 FOR CONTINUATION



4180 LIND AVE. S.W.  
 RENTON, WA 98055  
 PHONE: (425) 251-8811  
 FAX: (425) 251-8880  
 WEB SITE: PACENG.COM

**Pacific Engineering Design, LLC**  
 Civil Engineering and Planning Consultants

**BLUFF WEST**  
 MOSES LAKE, WA

FOR: SMART HOMES IN ALCOONA, WA 98001  
 PHONE: (253) 833-7755, FAX: (253) 876-0530

PROJECT NO.: **05063**  
 DRAWN BY: **AA**  
 ISSUE DATE: **10-26-05**  
 SHEET REV.:

**SANITARY SEWER AND WATER PROFILE**

05063SW01-C10.DWG  
**C10**