

A PORTION OF SEC 29, TWP 19, RGE 28, W.M. GRANT COUNTY, WASHINGTON



4180 LIND AVE. S.W.
PACIFIC ENGINEERING
DESIGN, LLC
PHONE: (425) 251-8811
FAX: (425) 251-8880
WEB SITE: PACENG.COM

Pacific Engineering Design, LLC
Civil Engineering and Planning Consultants

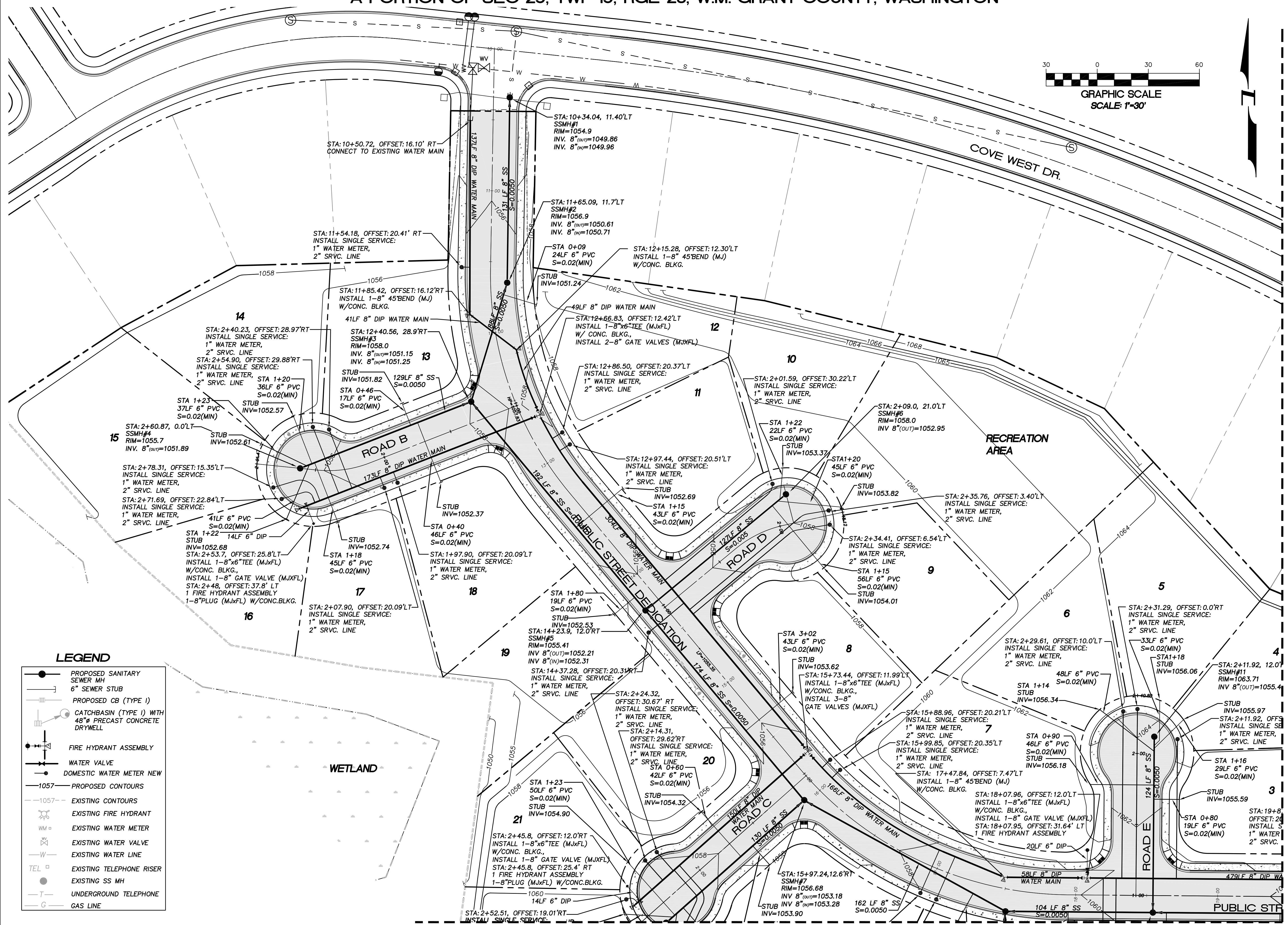
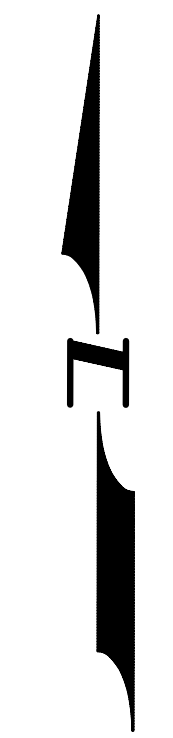
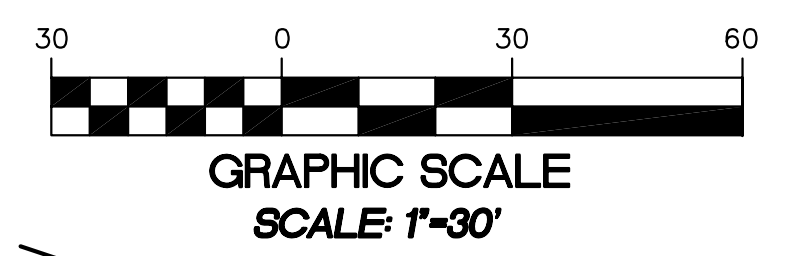
BLUFF WEST
MOBES LAKE, WA

FOR: SMART HOMES
IN
ALLACONA, WA 98001
PHONE: (253) 833-7755, FAX: (253) 876-0530

PROJECT NO.: 05063
DRAWN BY: AA
ISSUE DATE: 10-26-05
SHEET REV.:

SANITARY SEWER AND WATER PLAN

05063SW01-C08.DWG
C08



LEGEND

- PROPOSED SANITARY SEWER MH
- PROPOSED 6" SEWER STUB
- PROPOSED CB (TYPE I)
- CATCHBASIN (TYPE I) WITH 48"Ø PRECAST CONCRETE DRYWELL
- FIRE HYDRANT ASSEMBLY
- WATER VALVE
- DOMESTIC WATER METER NEW
- 1057 PROPOSED CONTOURS
- 1057 EXISTING CONTOURS
- EXISTING FIRE HYDRANT
- EXISTING WATER METER
- EXISTING WATER VALVE
- EXISTING WATER LINE
- EXISTING TELEPHONE RISER
- EXISTING SS MH
- UNDERGROUND TELEPHONE
- GAS LINE

SEE SHEET C10 FOR CONTINUATION

SEE SHEET C10 FOR CONTINUATION