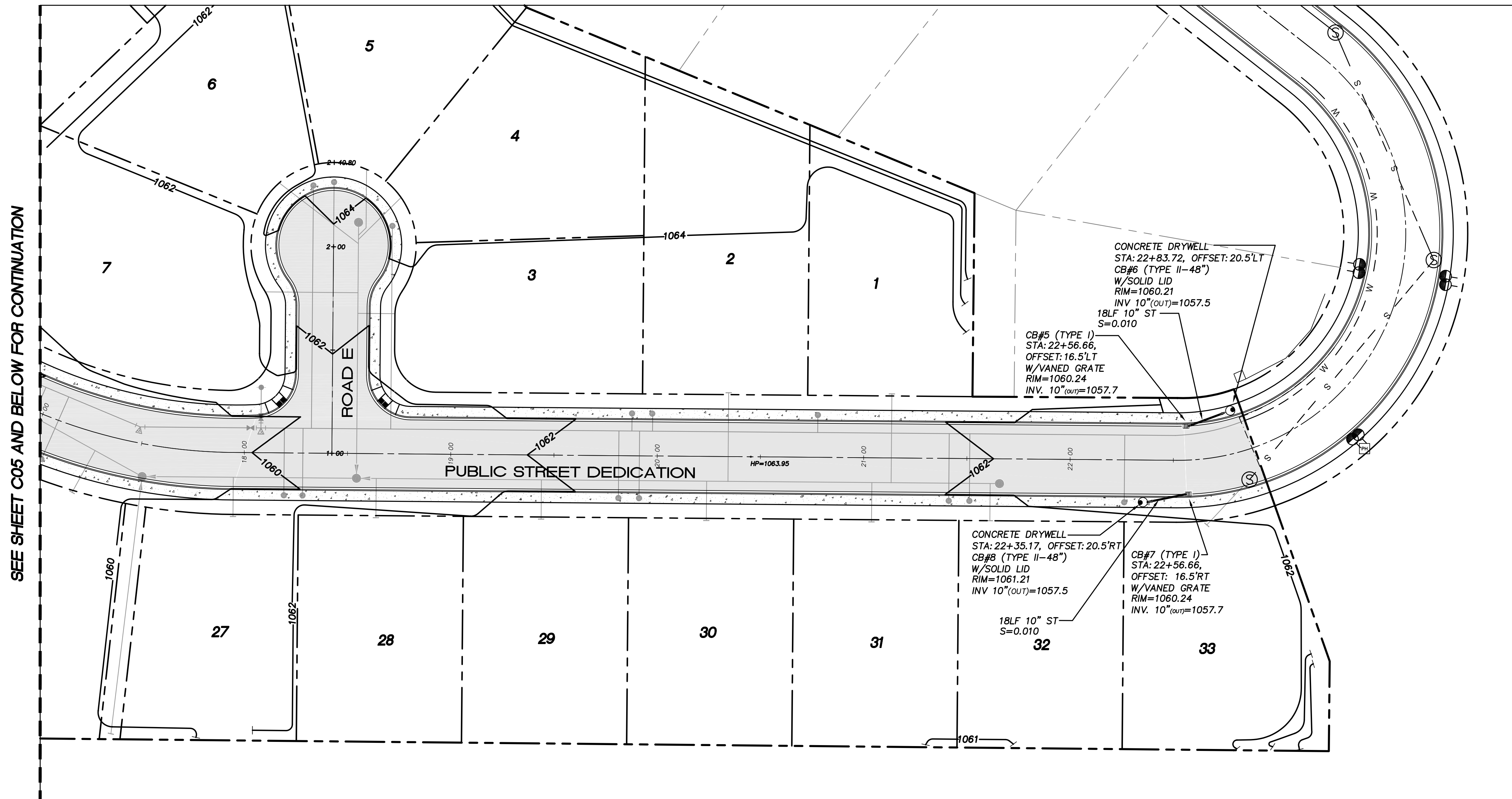
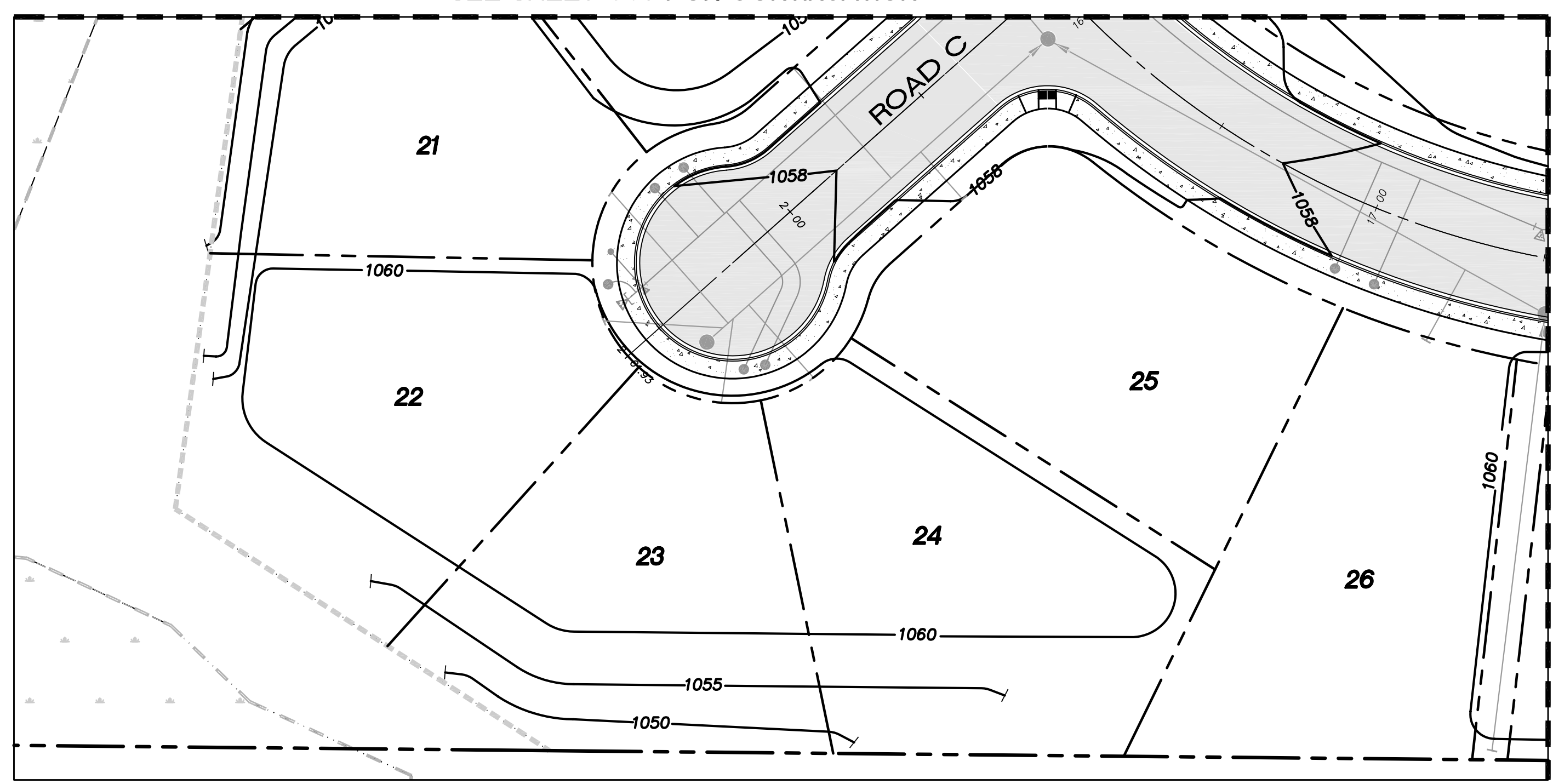


A PORTION OF SEC 29, TWP 19, RGE 28, W.M. GRANT COUNTY, WASHINGTON

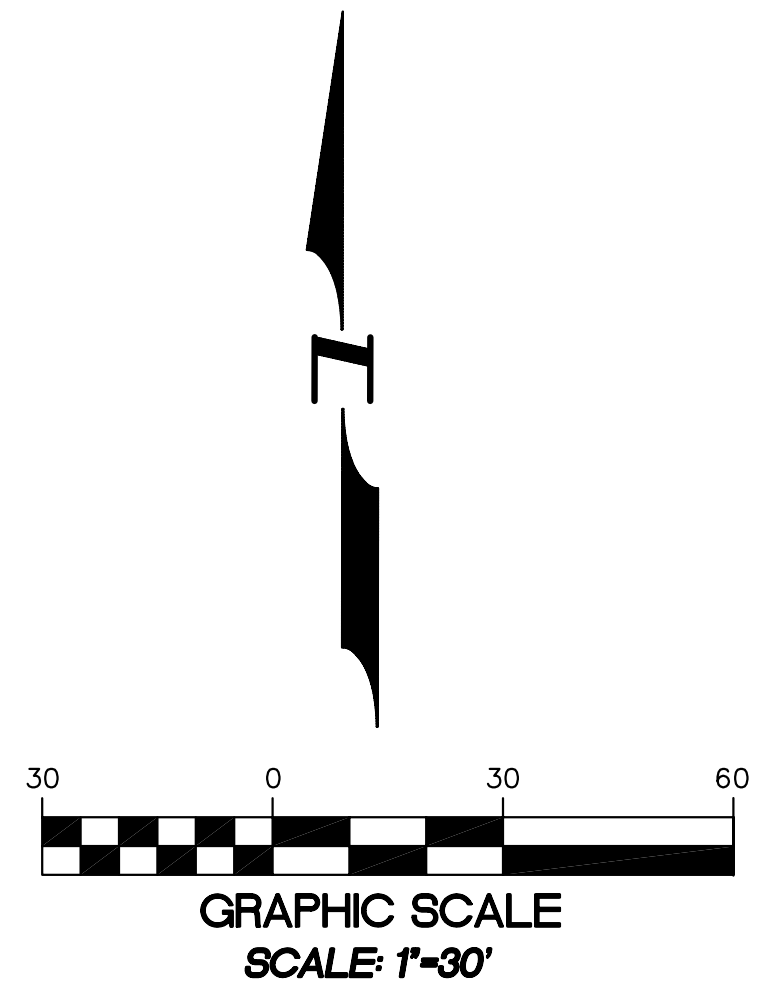


SEE SHEET C05 AND BELOW FOR CONTINUATION

SEE SHEET C05 FOR CONTINUATION



SEE PLAN ABOVE FOR CONTINUATION



**LEGEND**

- PROPOSED SANITARY SEWER MH
- 6" SEWER STUB
- PROPOSED CB (TYPE I)
- CATCHBASIN (TYPE I) WITH 48" PRECAST CONCRETE DRYWELL
- FIRE HYDRANT ASSEMBLY
- WATER VALVE
- DOMESTIC WATER METER NEW
- 1057— PROPOSED CONTOURS
- - -1057- - - EXISTING CONTOURS
- EXISTING FIRE HYDRANT
- WM ● EXISTING WATER METER
- EXISTING WATER VALVE
- W — EXISTING WATER LINE
- TEL □ EXISTING TELEPHONE RISER
- EXISTING SS MH
- T — UNDERGROUND TELEPHONE
- G — GAS LINE



4180 LIND AVE. S.W.  
 RENTON, WA 98055  
 PHONE: (425) 251-8811  
 FAX: (425) 251-8880  
 WEB SITE: PACENG.COM

**Pacific Engineering Design, LLC**  
 Civil Engineering and Planning Consultants

**BLUFF WEST**  
 MOSES LAKE, WA

FOR:  
 SMART HOMES  
 11000 N ALCONA, WA 98001  
 PHONE: (253) 833-7755, FAX: (253) 876-0530

PROJECT NO.: **05063**  
 DRAWN BY: **AA**  
 ISSUE DATE: **10-26-05**  
 SHEET REV.:

**GRADING AND DRAINAGE PLAN**

05063GR01-C05.DWG  
**C05**