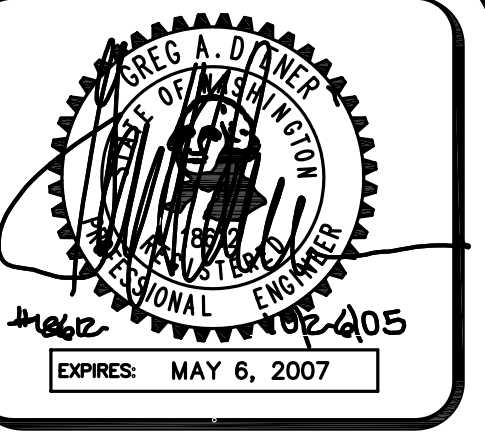
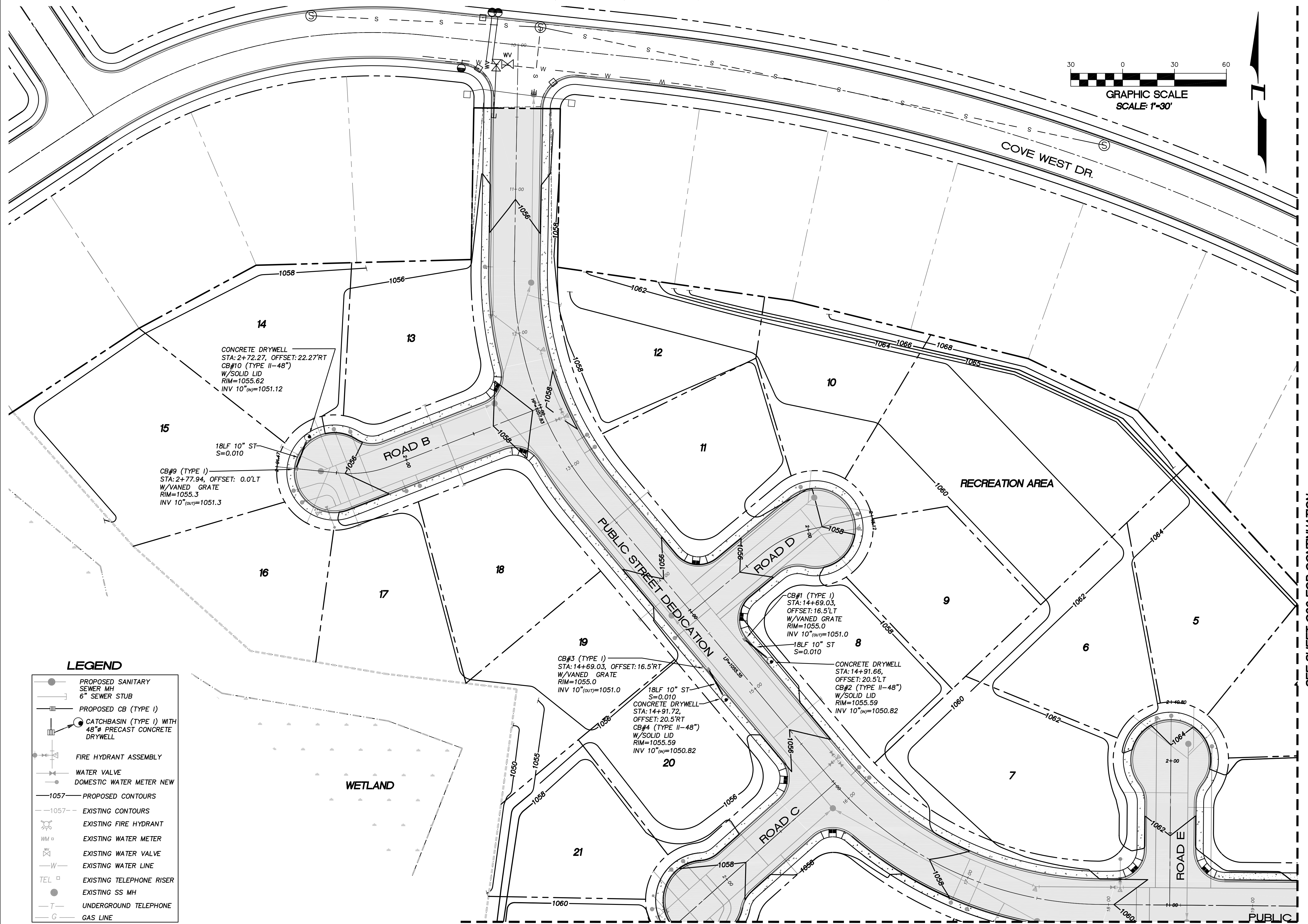
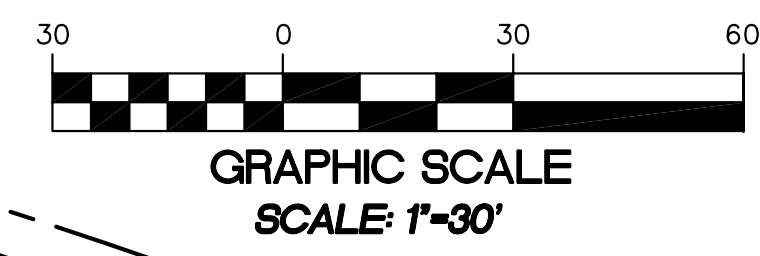


A PORTION OF SEC 29, TWP 19, RGE 28, W.M. GRANT COUNTY, WASHINGTON



4180 LIND AVE. S.W.
RENTON, WA 98055
PHONE: (425) 251-8811
FAX: (425) 251-8880
WEB SITE: PACENG.COM

Pacific Engineering Design, LLC
Civil Engineering and Planning Consultants



CONCRETE DRYWELL
STA: 2+72.27, OFFSET: 22.27'RT
CB#10 (TYPE II-48")
W/SOLID LID
RIM=1055.62
INV 10" (ov)=1051.12

18LF 10" ST
S=0.010
CB#9 (TYPE I)
STA: 2+77.94, OFFSET: 0.0'LT
W/VANED GRATE
RIM=1055.3
INV 10" (ov)=1051.3

CB#1 (TYPE I)
STA: 14+69.03, OFFSET: 16.5'LT
W/VANED GRATE
RIM=1055.0
INV 10" (ov)=1051.0
18LF 10" ST
S=0.010

CONCRETE DRYWELL
STA: 14+91.66, OFFSET: 20.5'LT
CB#2 (TYPE II-48")
W/SOLID LID
RIM=1055.59
INV 10" (ov)=1050.82

CB#3 (TYPE I)
STA: 14+69.03, OFFSET: 16.5'RT
W/VANED GRATE
RIM=1055.0
INV 10" (ov)=1051.0

18LF 10" ST
S=0.010
CONCRETE DRYWELL
STA: 14+91.72, OFFSET: 20.5'RT
CB#4 (TYPE II-48")
W/SOLID LID
RIM=1055.59
INV 10" (ov)=1050.82

- LEGEND**
- PROPOSED SANITARY SEWER MH
 - 6" SEWER STUB
 - PROPOSED CB (TYPE I)
 - CATCHBASIN (TYPE I) WITH 48" PRECAST CONCRETE DRYWELL
 - FIRE HYDRANT ASSEMBLY
 - WATER VALVE
 - DOMESTIC WATER METER NEW
 - 1057 — PROPOSED CONTOURS
 - 1057 — EXISTING CONTOURS
 - EXISTING FIRE HYDRANT
 - WM ● EXISTING WATER METER
 - EXISTING WATER VALVE
 - W — EXISTING WATER LINE
 - TEL □ EXISTING TELEPHONE RISER
 - EXISTING SS MH
 - T — UNDERGROUND TELEPHONE
 - G — GAS LINE

SEE SHEET C06 FOR CONTINUATION

SEE SHEET C06 FOR CONTINUATION

BLUFF WEST
MOBES LAKE, WA
FOR: SMART HOMES
ALACONA, WA 98001
PHONE: (253) 833-7755, FAX: (253) 876-0530

PROJECT NO.: **05063**
DRAWN BY: **AA**
ISSUE DATE: **10-26-05**
SHEET REV.:

GRADING AND DRAINAGE PLAN

05063GR01-C04.DWG
C04