

A PORTION OF SEC 29, TWP 19, RGE 28, W.M. GRANT COUNTY, WASHINGTON



4180 LIND AVE. S.W.
 RENTON, WA 98055
 PHONE: (425) 251-8811
 FAX: (425) 251-8880
 WEB SITE: PACENG.COM

Pacific Engineering Design, LLC
 Civil Engineering and Planning Consultants

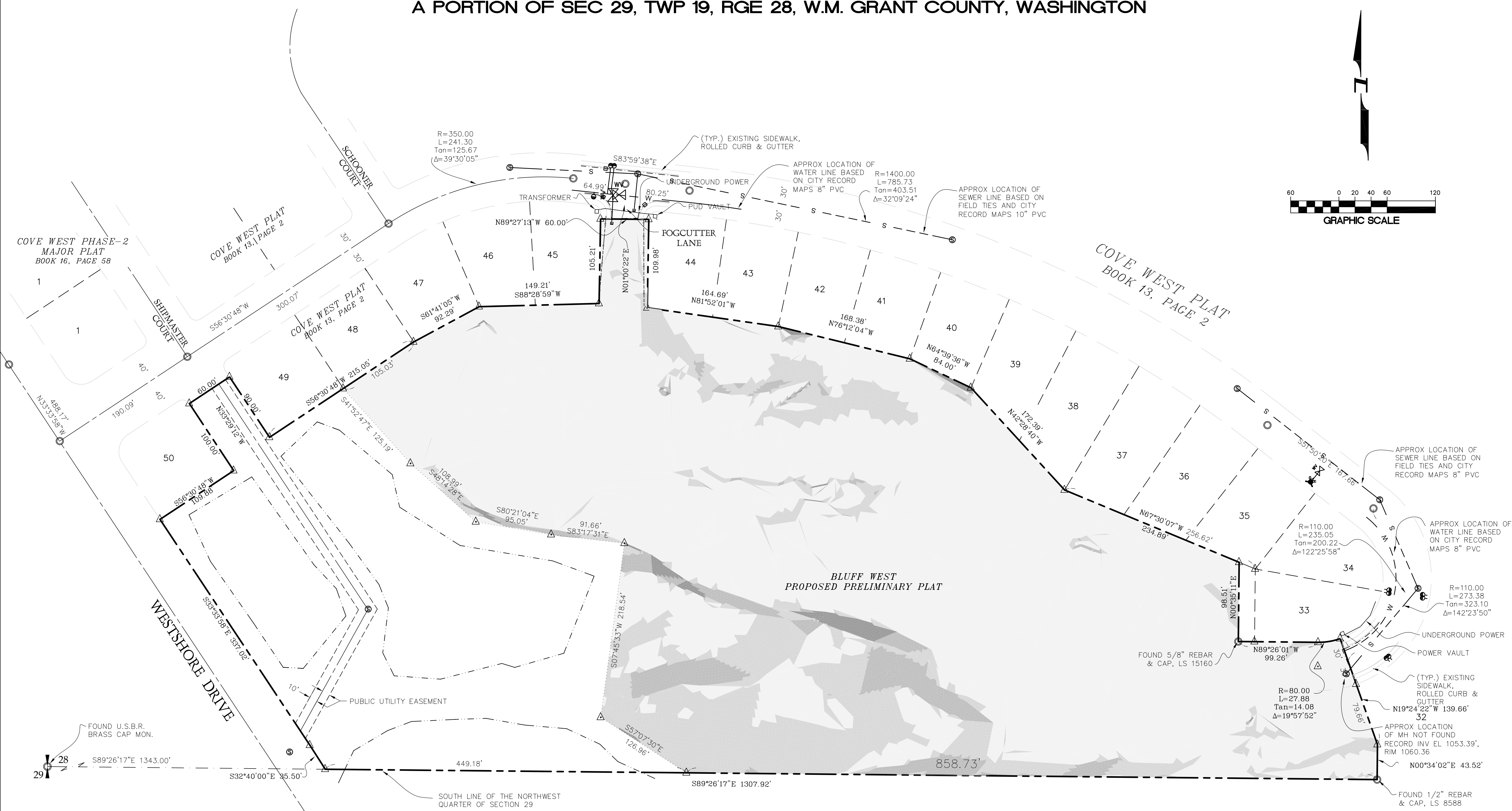
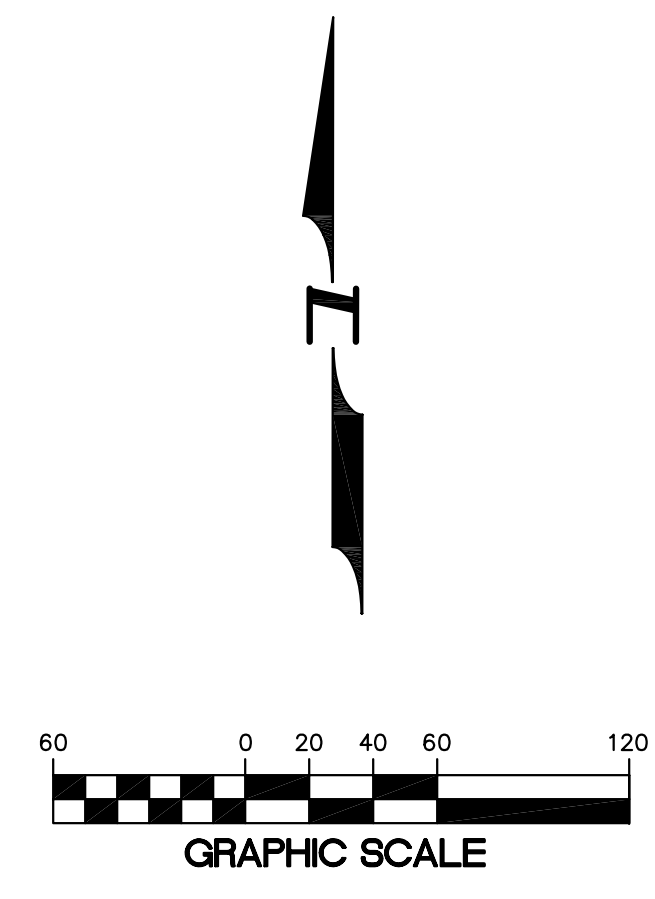
BLUFF WEST
 MOSES LAKE, WA

FOR: SMART HOMES IN ALICONA, WA 98001
 PHONE: (253) 833-7755, FAX: (253) 876-0530

PROJECT NO.: **05063**
 DRAWN BY: **TLR**
 ISSUE DATE: **10-26-05**
 SHEET REV.:

SLOPE ANALYSIS

05063SA01-C03.DWG
C03



SLOPE ANALYSIS

Color	Layer	Range Beg.	Range End	Percent	Area
□	SRF-RNG1	0.00	10.00	79.0	364648.76
□	SRF-RNG2	10.00	25.00	16.0	73852.76
□	SRF-RNG3	25.00	40.00	4.1	18909.95
□	SRF-RNG4	40.00	200.00	0.9	4046.30
			TOTAL	100.0	52412.29