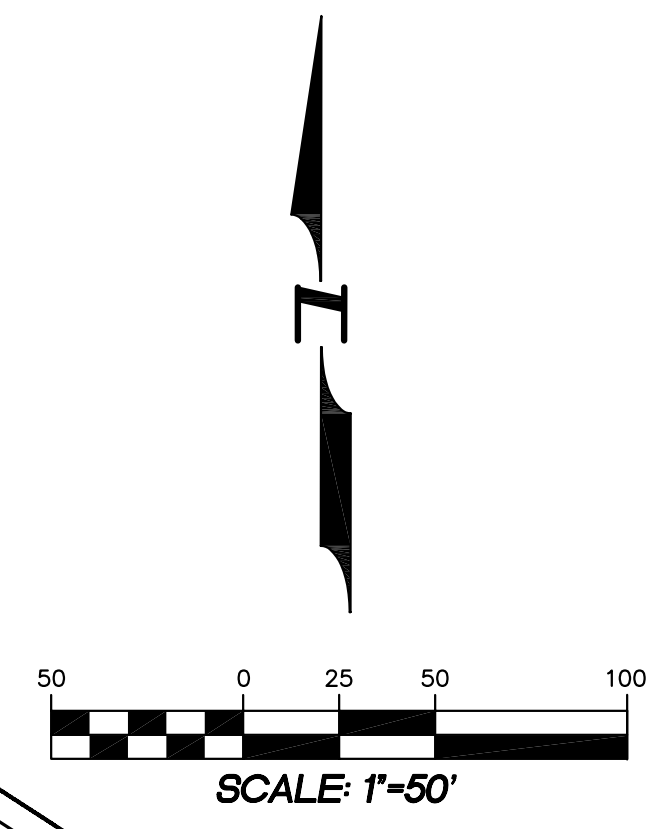
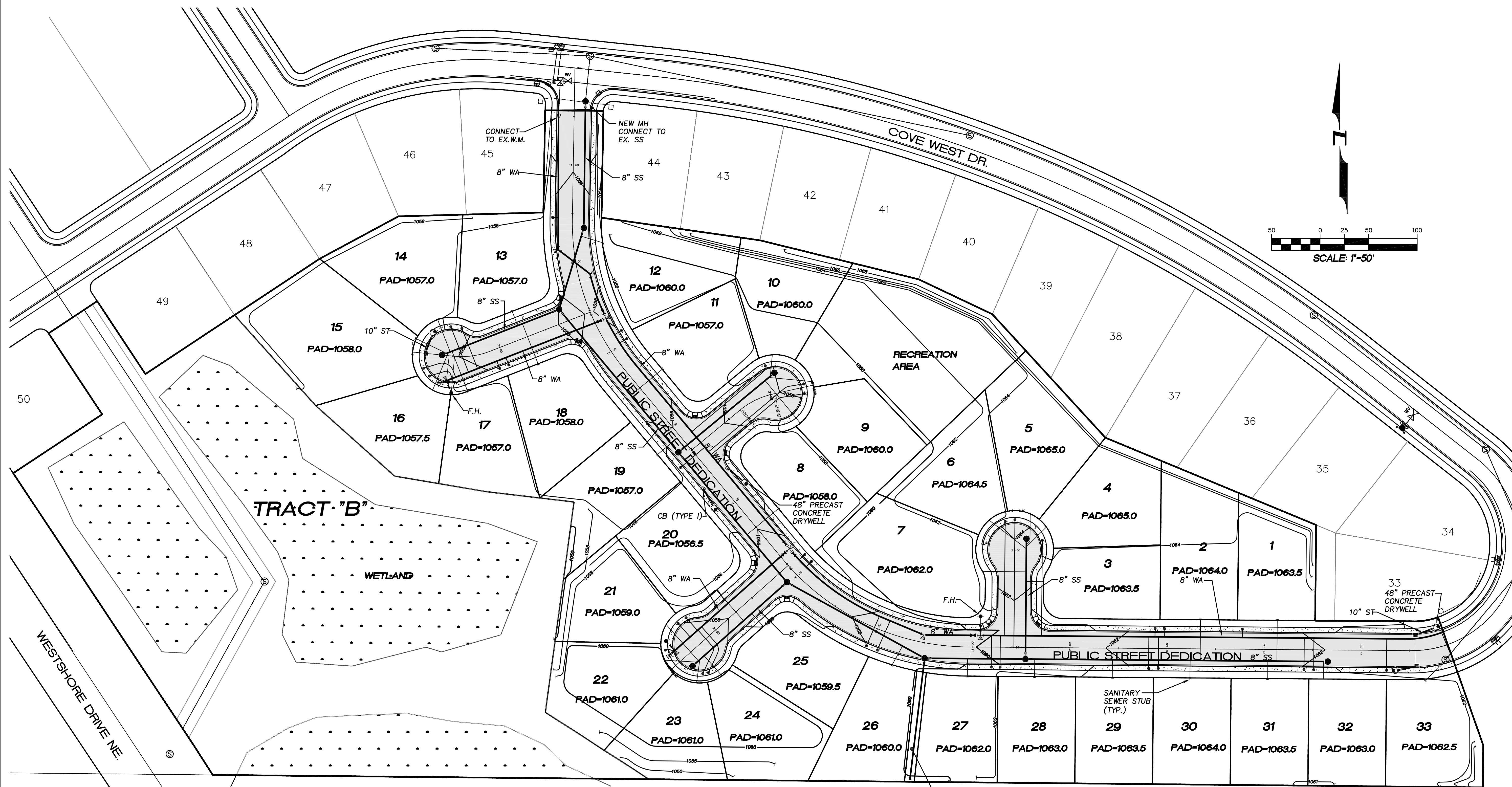


A PORTION OF SEC 29, TWP 19, RGE 28, W.M. GRANT COUNTY, WASHINGTON



LEGEND

PROPOSED:	
	BOUNDARY / R.O.W. LINE
	CENTERLINE
	CATCHBASIN (TYPE I) WITH 48" PRECAST CONCRETE DRYWELL
	FIRE HYDRANT ASSEMBLY
	WATER VALVE
	DOMESTIC WATER METER NEW
	SANITARY SEWER MANHOLE NEW
	ASPHALT PAVEMENT NEW
	FINISHED ELEVATION SUBGRADE
	FINISHED CONTOUR ELEVATION



4180 LIND AVE. S.W.
 RENTON, WA 98055
 PHONE: (425) 251-8811
 FAX: (425) 251-8880
 WEB SITE: PACENG.COM

Pacific Engineering Design, LLC
 Civil Engineering and Planning Consultants

BLUFF WEST
 MOSES LAKE, WA
 FOR: SMART HOMES ALCOONA, WA 99001
 PHONE: (253) 833-7755, FAX: (253) 876-0530

PROJECT NO.: **05063**
 DRAWN BY: **TLR**
 ISSUE DATE: **10-26-05**
 SHEET REV.:

COMPOSITE UTILITIES PLAN

05063CU01-C02.DWG
C02