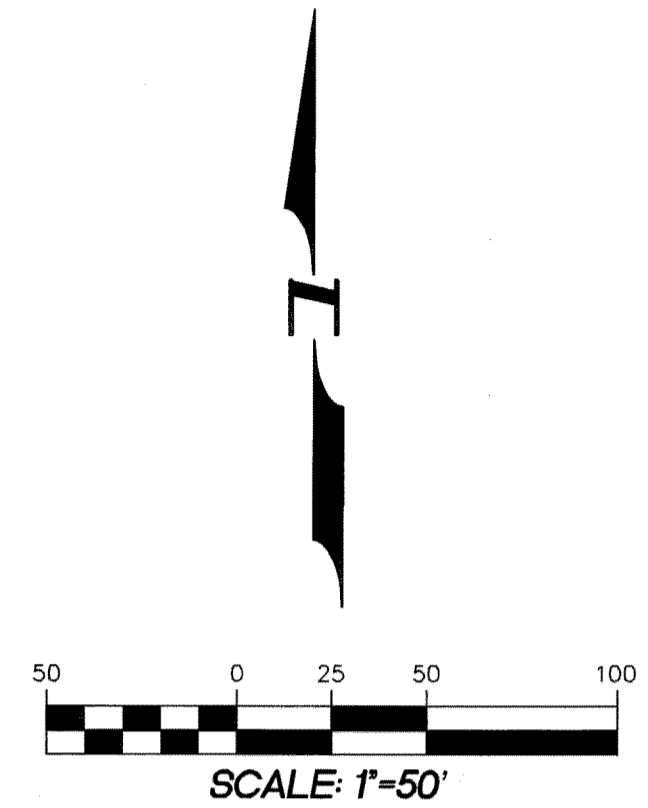
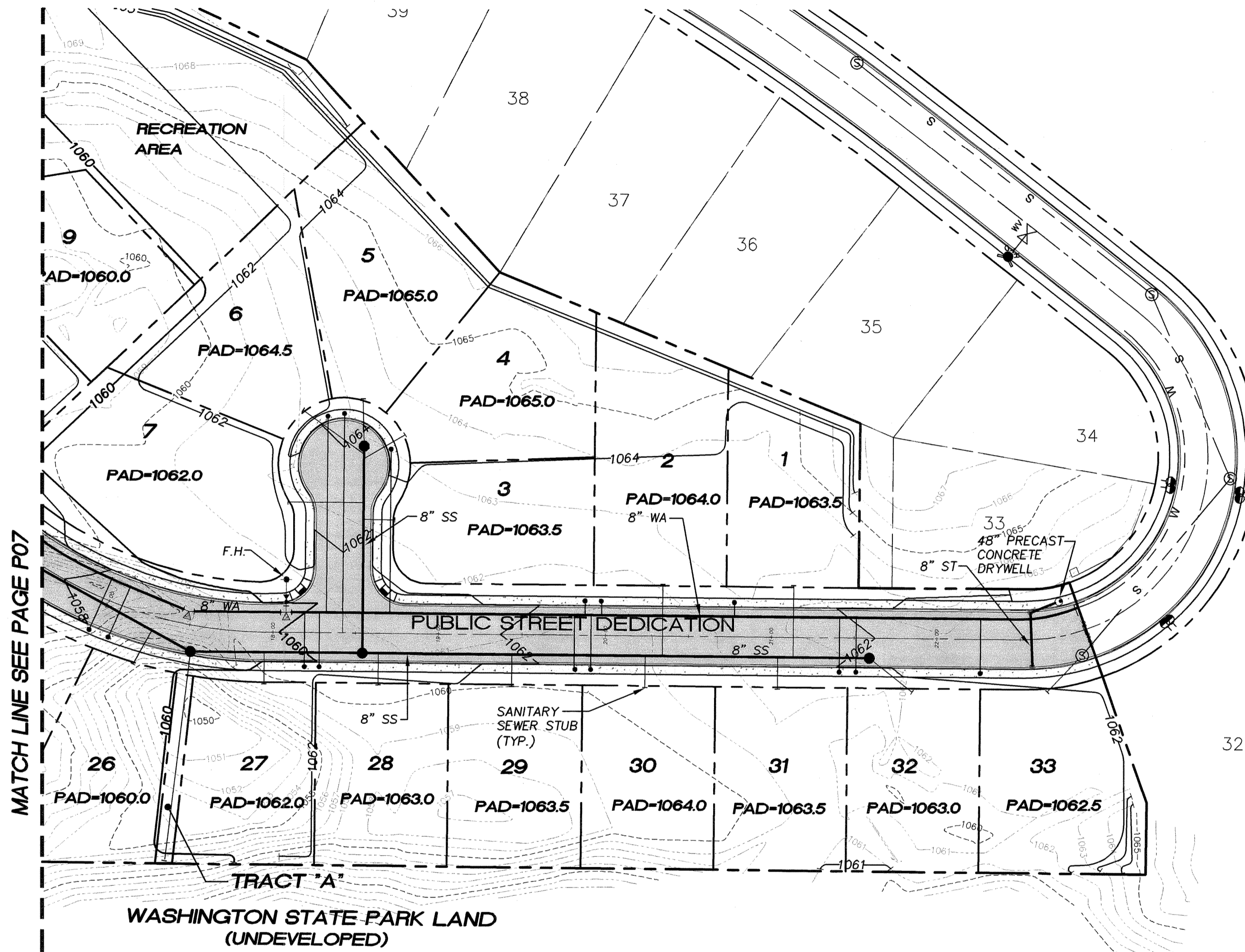


REVISIONS:

# A PORTION OF SEC 29, TWP 19, RGE 28, W.M. GRANT COUNTY, WASHINGTON



## LEGEND

### PROPOSED:

- BOUNDARY / R.O.W. LINE
- CENTERLINE
- CATCHBASIN (TYPE I) WITH 48" PRECAST CONCRETE DRYWELL
- FIRE HYDRANT ASSEMBLY
- WATER VALVE
- DOMESTIC WATER METER NEW
- SANITARY SEWER MANHOLE NEW
- ASPHALT PAVEMENT NEW
- PAD=1060.0 FINISHED ELEVATION SUBGRADE
- 1068 FINISHED CONTOUR ELEVATION

MATCH LINE SEE PAGE P07



**Pacific Engineering Design, LLC**  
Civil Engineering and Planning Consultants

4180 LIND AVENUE S.W.  
RENTON, WA 98055  
PHONE: (425) 251-8811  
FAX: (425) 251-8880  
WEB SITE: PACENG.COM

## BLUFF WEST

MOSES LAKE, WA

FOR:  
SMART HOMES  
107 WASHINGTON  
ALGONA, WA 98001  
PHONE: (253) 833-7755, FAX: (253) 876-0530

## PRELIMINARY PLAT COMPOSITE UTILITIES PLAN

PROJECT NO.: **05063**  
DRAWN BY: **TLR**  
ISSUE DATE: **07-29-05**  
SHEET REV.:

05063CU01-P07-P08.DWG

# P08