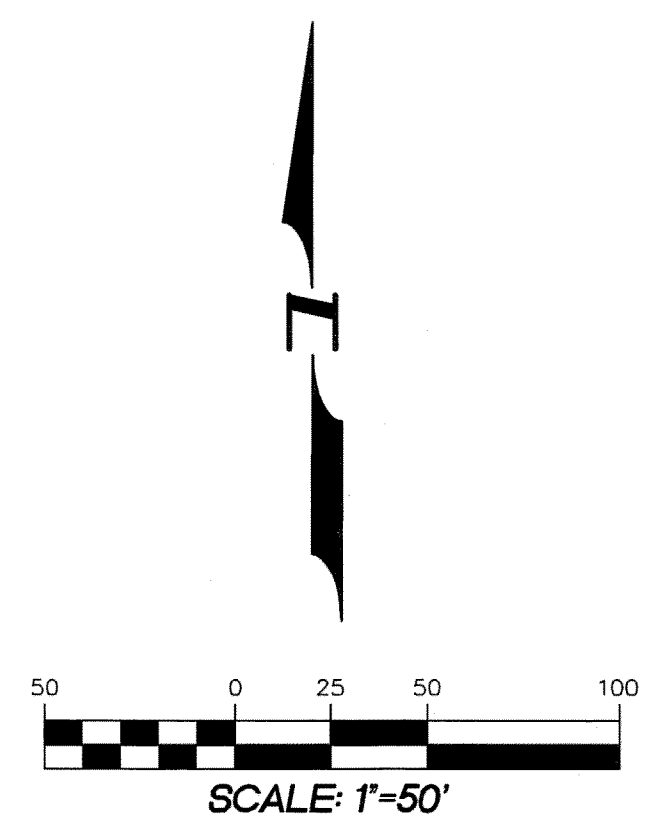
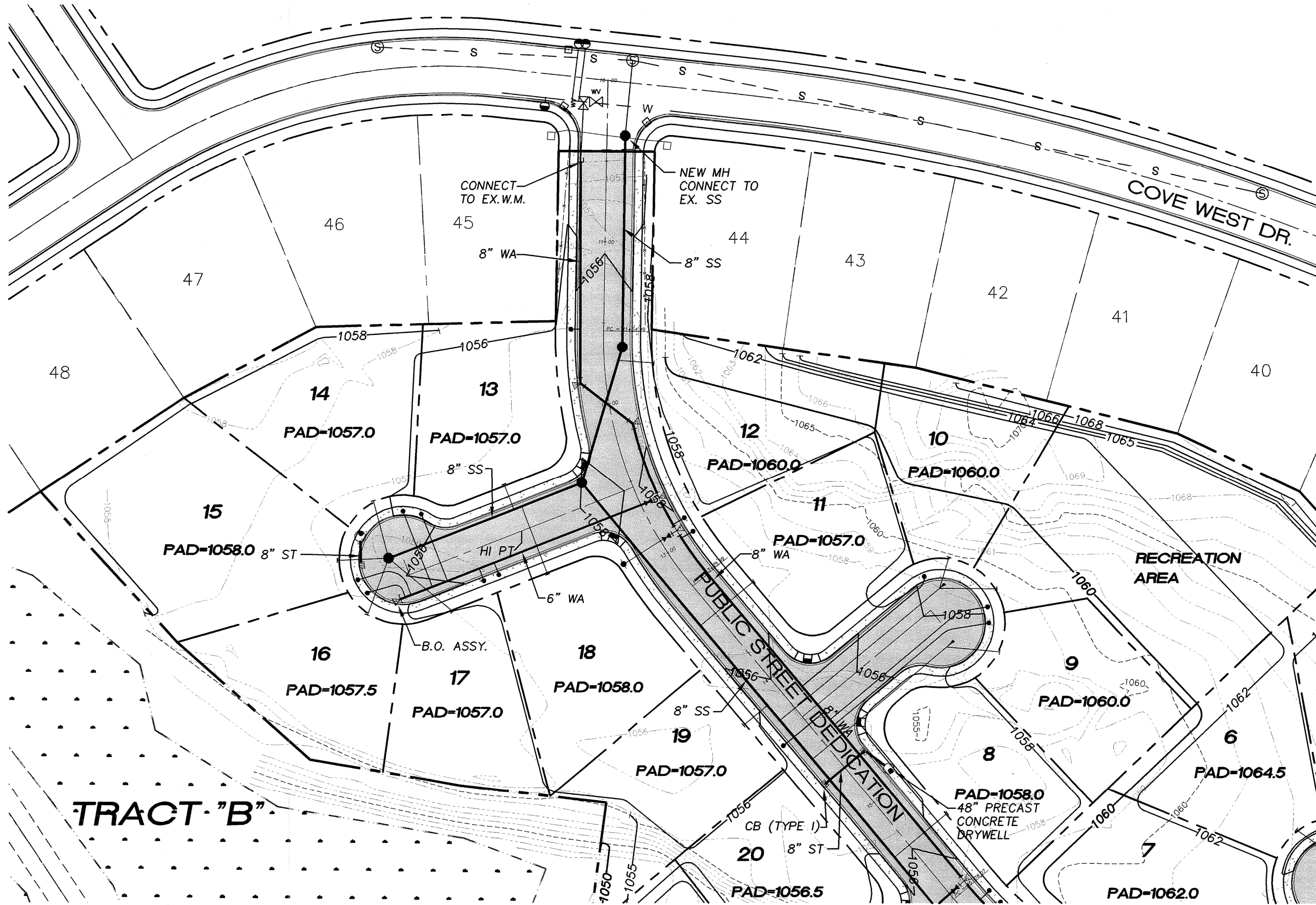


REVISIONS:

A PORTION OF SEC 29, TWP 19, RGE 28, W.M. GRANT COUNTY, WASHINGTON

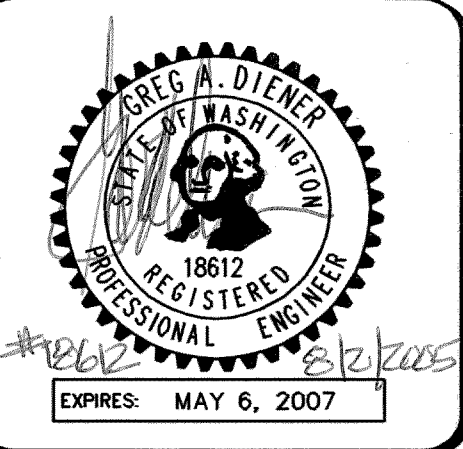


LEGEND

PROPOSED:

- BOUNDARY / R.O.W. LINE
- CENTERLINE
- CATCHBASIN (TYPE I) WITH 48" PRECAST CONCRETE DRYWELL
- FIRE HYDRANT ASSEMBLY
- WATER VALVE
- DOMESTIC WATER METER NEW
- SANITARY SEWER MANHOLE NEW
- ASPHALT PAVEMENT NEW
- FINISHED ELEVATION SUBGRADE
- FINISHED CONTOUR ELEVATION

TRACT "B"



Pacific Engineering Design, LLC

Civil Engineering and Planning Consultants

4180 LIND AVENUE S.W.
 RENTON, WA 98055
 PHONE: (425) 251-8811
 FAX: (425) 251-8880
 WEB SITE: PACENG.COM

BLUFF WEST

MOSES LAKE, WA

FOR:
 SMART HOMES
 107 WASHINGTON
 ALGONA, WA 98001
 PHONE: (253) 833-7755, FAX: (253) 876-0530

**PRELIMINARY PLAT
 COMPOSITE UTILITIES PLAN**

PROJECT NO.: **05063**

DRAWN BY: **TLR**

ISSUE DATE: **07-29-05**

SHEET REV.:

05063CU01-P07-P08.DWG

P07