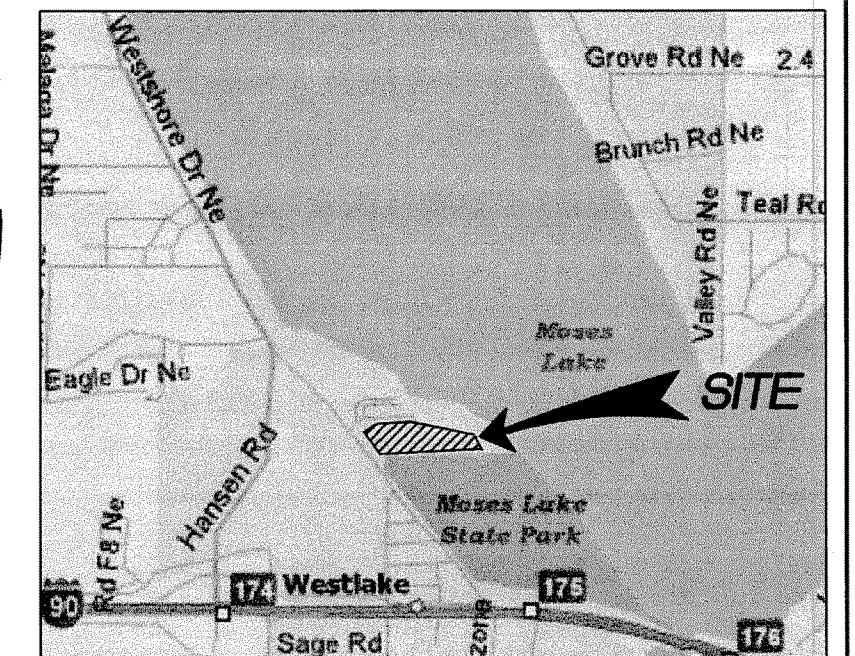
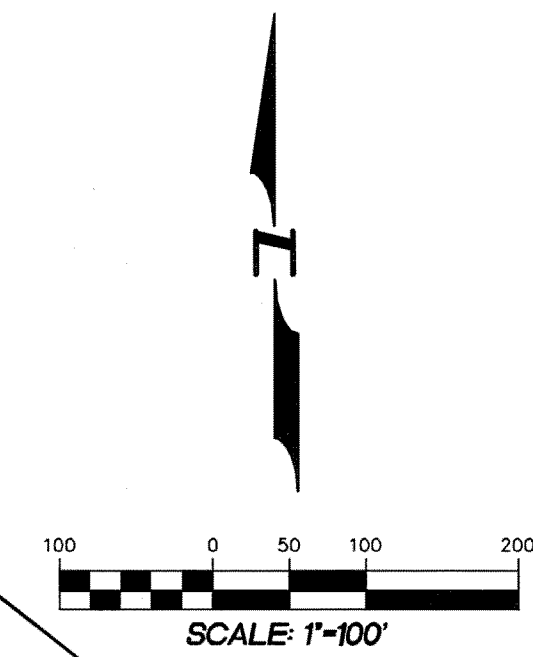
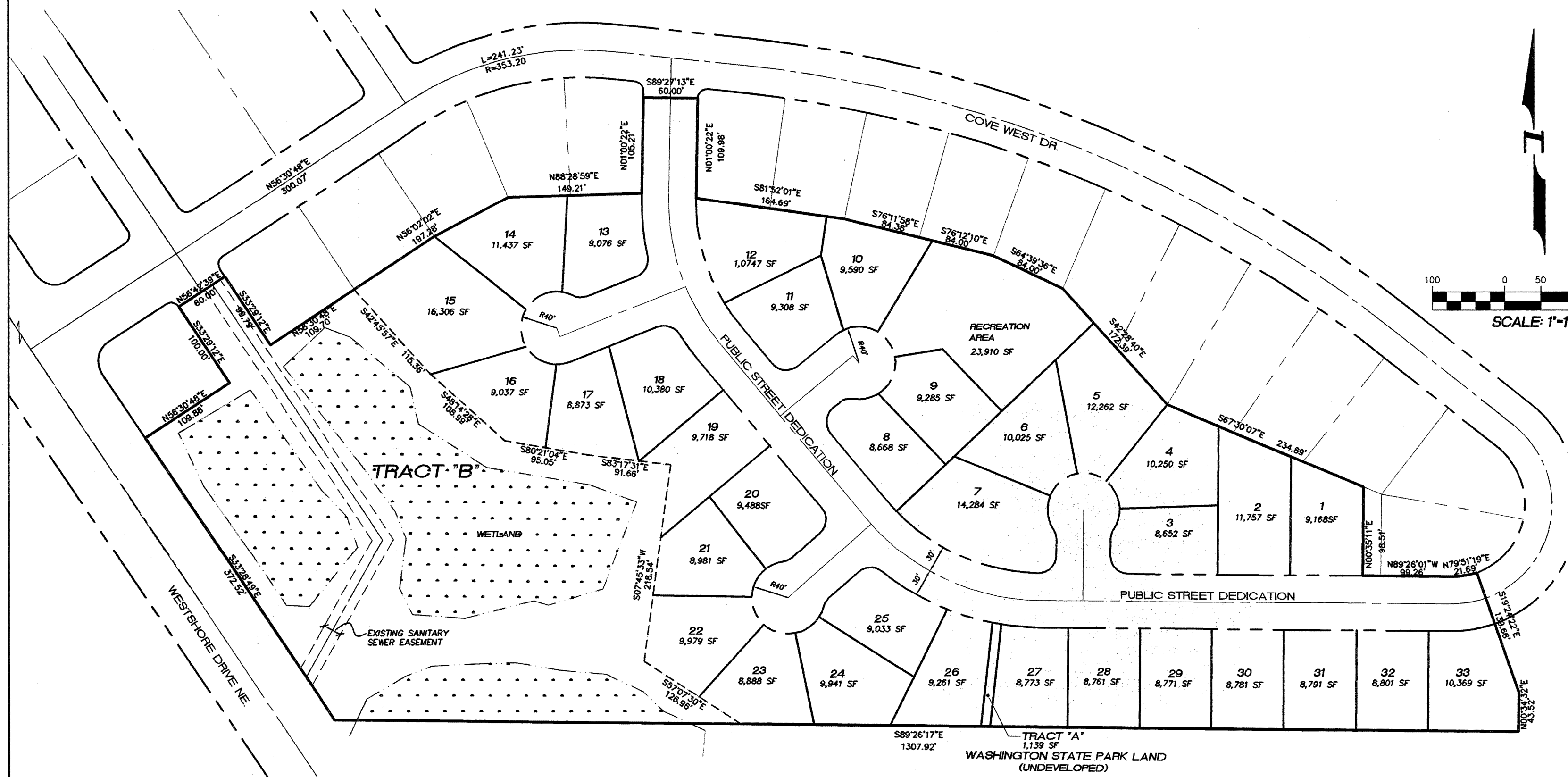


A PORTION OF SEC 29, TWP 19, RGE 28, W.M. GRANT COUNTY, WASHINGTON



VICINITY MAP
NTS

BASIS OF BEARING

THE BEARING OF N56°30'48"E ON THE CENTERLINE OF COVE WEST DRIVE BETWEEN THE FOUND MONUMENTS AT THE INTERSECTIONS OF SCHOONER COURT AND WESTSHORE DRIVE AS SHOWN ON THIS MAP EQUALS THE BEARING FOR THE SAME LINE ON THE PLAT OF COVE WEST, FILED IN BOOK 13 OF PLATS, PAGES 2 THROUGH 5, RECORDS OF GRANT COUNTY, WASHINGTON.

PUBLIC UTILITY EASEMENTS

PUBLIC UTILITY EASEMENTS ARE DEDICATED ON THIS PLAT, 5 FOOT WIDE, EITHER SIDE OF ALL INTERIOR LOT LINES AND 10 FOOT WIDE ALONG ALL STREET RIGHTS OF WAY.

SURVEYOR:

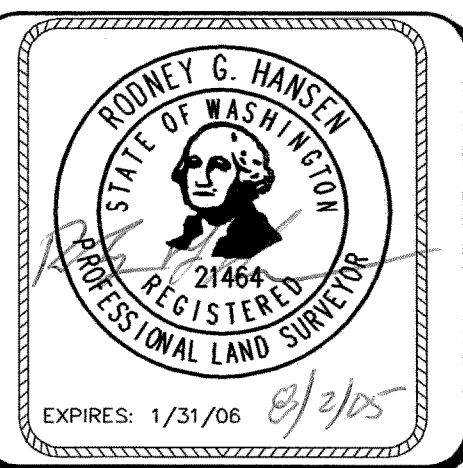
HANSEN SURVEYING
17420 116th. AVENUE S.E.
RENTON, WA 98058
PHONE (425) 235-8440
FAX (425) 235-0266

LEGAL DESCRIPTION

THAT PORTION OF THE SOUTHWEST QUARTER OF THE NORTHWEST QUARTER AND GOVERNMENT LOT 2 OF SECTION 29, TOWNSHIP 19 NORTH, RANGE 28 E.W.M., LYING NORTHEASTERLY OF THE RIGHT OF WAY WESTSHORE DRIVE AND SOUTHERLY OF THE PLAT OF COVE WEST, AS PER RECORDED IN VOLUME 13 OF PLATS, PAGES 2, 3, 4 AND 5, RECORDS OF GRANT COUNTY, WASHINGTON.

SHEET INDEX

- P01 PRELIMINARY PLAT COVER SHEET
- P02 PRELIMINARY PLAT NORTH
- P03 PRELIMINARY PLAT SOUTH
- P04 PRELIMINARY PLAT EAST
- P05 PRELIMINARY PLAT 300' RADIUS MAP
- P06 PRELIMINARY PLAT STREET CROSS SECTION
- P07 PRELIMINARY PLAT COMPOSITE UTILITIES WEST
- P08 PRELIMINARY PLAT COMPOSITE UTILITIES EAST
- P09 EXISTING CONDITIONS



Pacific Engineering Design, LLC

Civil Engineering and Planning Consultants

4180 LIND AVENUE S.W.
RENTON, WA 98055
PHONE: (425) 251-8811
FAX: (425) 251-8880
WEB SITE: PACENG.COM

BLUFF WEST

MOSES LAKE, WA

FOR:
SMART HOMES
107 WASHINGTON
ALGONA, WA 98001
PHONE: (253) 833-7755, FAX: (253) 876-0530

PRELIMINARY PLAT COVER SHEET

PROJECT NO.: **05063**

DRAWN BY: **AA**

ISSUE DATE: **07-29-05**

SHEET REV: _____

05063HC01-P01.DWG

P01