

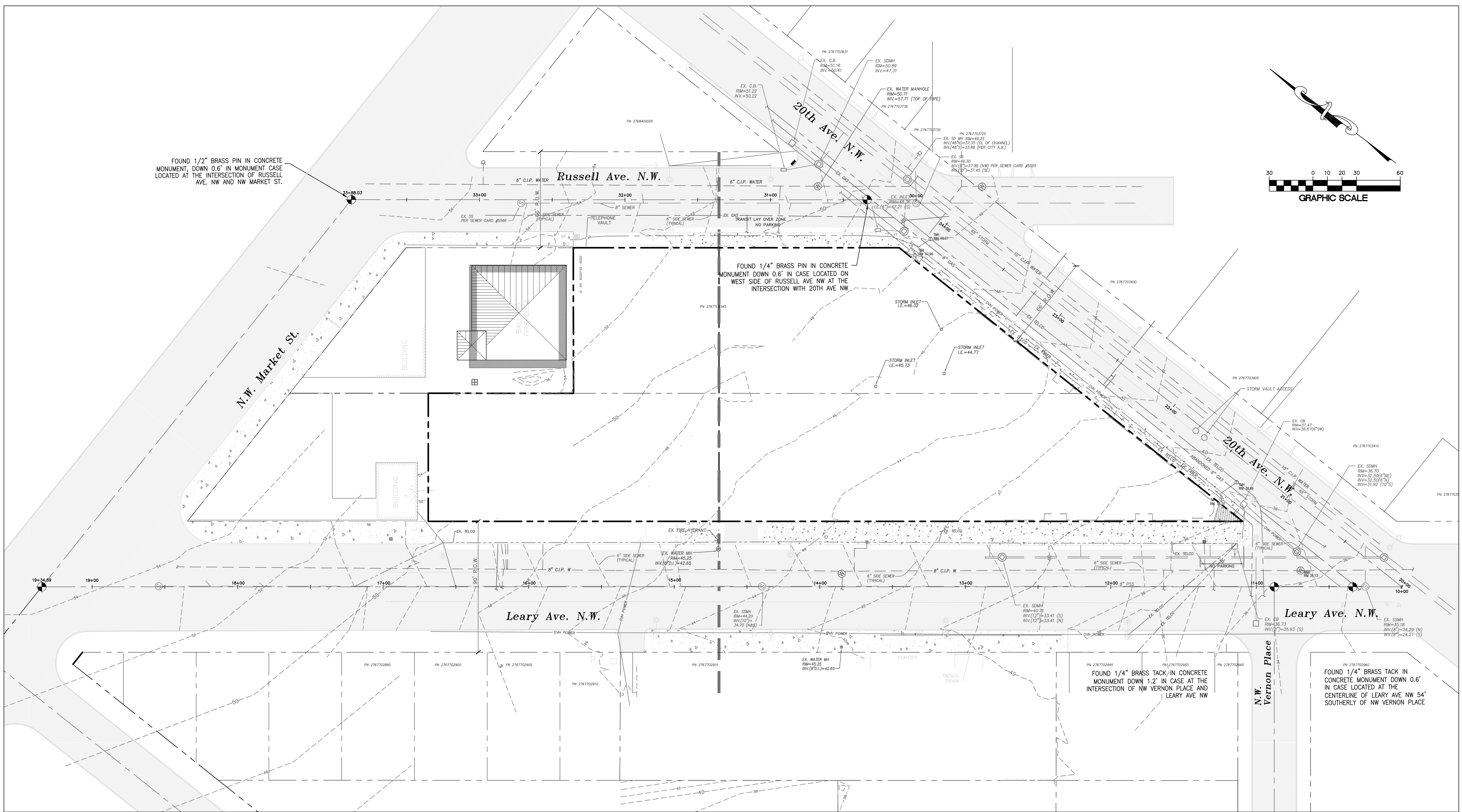
FOUND 1/2" BRASS PIN IN CONCRETE MONUMENT, DOWN 0.6" IN MONUMENT CASE LOCATED AT THE INTERSECTION OF RUSSELL AVE. NW AND NW MARKET ST.

FOUND 1/4" BRASS PIN IN CONCRETE MONUMENT DOWN 0.6" IN CASE LOCATED ON WEST SIDE OF RUSSELL AVE NW AT THE INTERSECTION WITH 20TH AVE NW

FOUND 1/4" BRASS TACK IN CONCRETE MONUMENT DOWN 1.2" IN CASE AT THE INTERSECTION OF NW VERNON PLACE AND LEARY AVE NW

FOUND 1/4" BRASS TACK IN CONCRETE MONUMENT DOWN 0.6" IN CASE LOCATED AT THE CENTERLINE OF LEARY AVE NW 54' SOUTHERLY OF NW VERNON PLACE

VAULT SERIAL NO.	DATE	MARK	NATURE	REVISIONS	MADE CHKD



Canal Station Condominiums 5440 LEARY AVE. N.W.

Pacific Engineering Design, LLC
 15445 53rd Ave. South
 Seattle, WA 98188
 PHONE: (206) 431-7970
 FAX: (206) 388-1648
 WEB SITE: www.paceng.com

APPROVED BY SEATTLE TRANSPORTATION	20.....
REVIEWED BY SPU/DRAINAGE	20.....
APPROVED BY SDOT STREET IMPROVEMENT PERMITTING	20.....

NAME OR INITIALS AND DATE	INITIALS AND DATE
DESIGNED: L. LARSEN	REVIEWED:
CHECKED: G. DIENER	PLAN REVIEW ANALYST.....
DRAWN: D. WHITE	PLAN REVIEW SEC. MGR.....
CHECKED: G. DIENER	RECEIVED.....
DESIGN REVIEW	REVISED AS-BUILT.....

All work done in accordance with the City of Seattle Standard Plans and Specifications in effect on the date shown above, and supplemented by Special Provisions.

City of Seattle
Seattle Department of Transportation
 WORK ORDER NO. TWS7863 SPU W/O# - NS 50118
 PERMIT NO. Z2560 APPROVED
 SCALE: H.1"=30' V.1"=30' INSPECTOR'S BOOK

Leary Ave. N.W.
 EXISTING CONDITIONS

SDOT PROJECT NO. T05-2727
 VAULT PLAN NO.
 SHEET 6 OF 6