



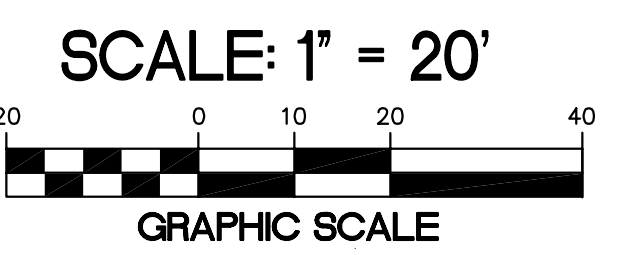
**LUMINAIRE SCHEDULE**

CALLOUT	SYMBOL	LAMP	DESCRIPTION	BALLAST	MOUNTING	MODEL	INPUT WATTS	VOLTS	NOTES
SI 250		(1) 250W	250W HIGH PRESSURE SODIUM WITH INTERNAL BALLAST, CUTOFF	MAGNETIC	POLE	AMERICAN STANDARD 125 255 CA M7 R2 FG	250	277V 1P 2W	TYPE II SHORT CUTOFF MULTI-TAP BALLAST

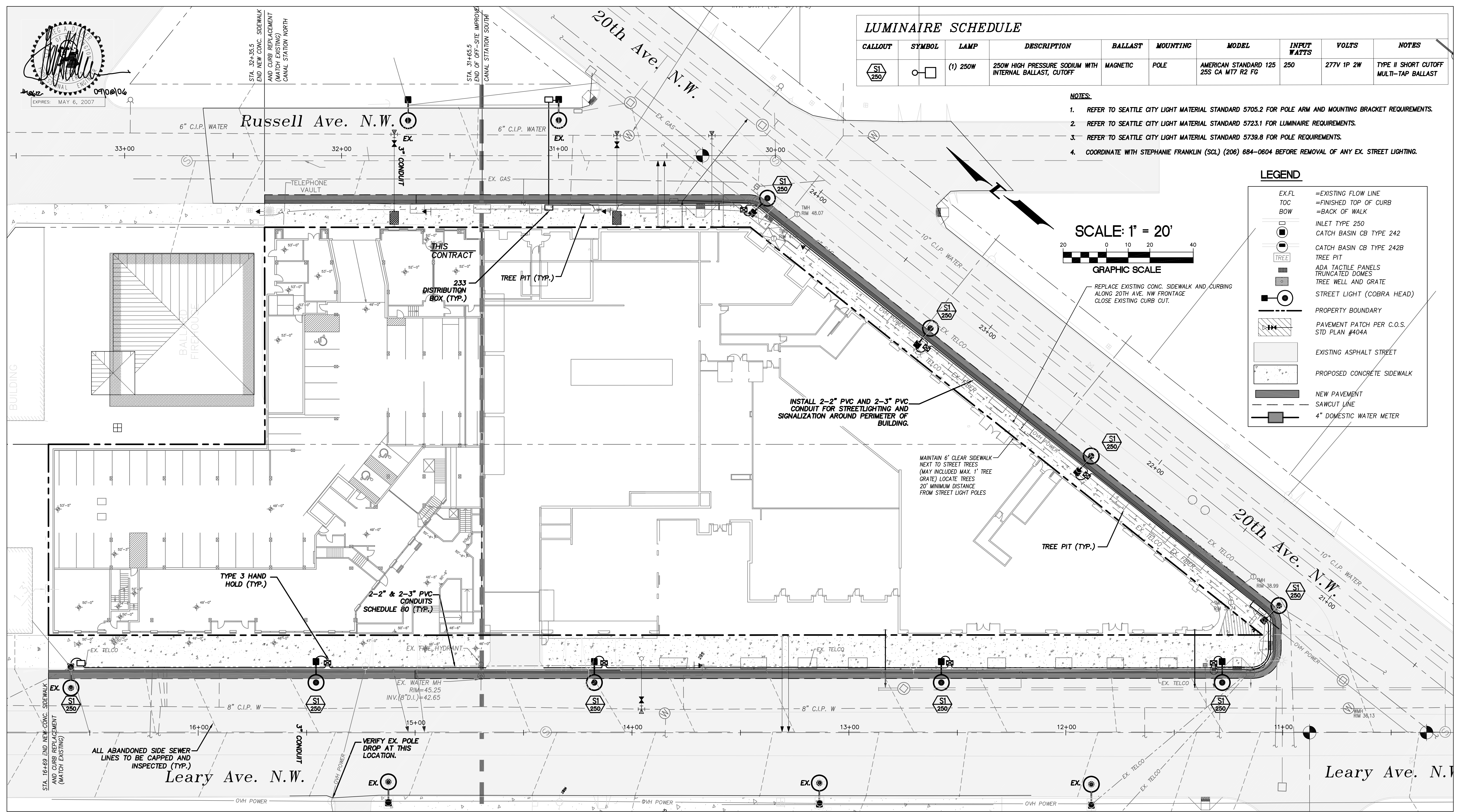
- NOTES:**
- REFER TO SEATTLE CITY LIGHT MATERIAL STANDARD 5705.2 FOR POLE ARM AND MOUNTING BRACKET REQUIREMENTS.
  - REFER TO SEATTLE CITY LIGHT MATERIAL STANDARD 5723.1 FOR LUMINAIRE REQUIREMENTS.
  - REFER TO SEATTLE CITY LIGHT MATERIAL STANDARD 5739.8 FOR POLE REQUIREMENTS.
  - COORDINATE WITH STEPHANIE FRANKLIN (SCL) (206) 684-0604 BEFORE REMOVAL OF ANY EX. STREET LIGHTING.

**LEGEND**

	=EXISTING FLOW LINE
	=FINISHED TOP OF CURB
	=BACK OF WALK
	INLET TYPE 250
	CATCH BASIN CB TYPE 242
	CATCH BASIN CB TYPE 242B
	TREE PIT
	ADA TACTILE PANELS
	TRUNCATED DOMES
	TREE WELL AND GRATE
	STREET LIGHT (COBRA HEAD)
	PROPERTY BOUNDARY
	PAVEMENT PATCH PER C.O.S. STD PLAN #404A
	EXISTING ASPHALT STREET
	PROPOSED CONCRETE SIDEWALK
	NEW PAVEMENT
	SAWCUT LINE
	4" DOMESTIC WATER METER



REPLACE EXISTING CONC. SIDEWALK AND CURBING ALONG 20TH AVE. NW FRONTAGE CLOSE EXISTING CURB CUT.



VAULT SERIAL NO.	DATE	MARK	NATURE	REVISIONS

**Pacific Engineering Design, LLC**  
 Civil Engineering and Planning Consultants  
 15445 53rd Ave. South  
 Seattle, WA 98188  
 PHONE: (206) 431-7970  
 FAX: (206) 388-1648  
 WEB SITE: www.paceng.com

APPROVED BY SEATTLE TRANSPORTATION	20.....
REVIEWED BY SPU/DRAINAGE	20.....
APPROVED BY SDOT STREET IMPROVEMENT PERMITTING	20.....

NAME OR INITIALS AND DATE	INITIALS AND DATE
DESIGNED: L. LARSEN	REVIEWED:
CHECKED: G. DIENER	PLAN REVIEW ANALYST.....
DRAWN: D. WHITE	PLAN REVIEW SEC. MGR.....
CHECKED: G. DIENER	RECEIVED.....
DESIGN REVIEW	REVISED AS-BUILT.....

All work done in accordance with the City of Seattle Standard Plans and Specifications in effect on the date shown above, and supplemented by Special Provisions.

City of Seattle  
**Seattle Department of Transportation**  
 WORK ORDER NO. TWS7863  
 PERMIT NO. Z2560  
 SCALE: H:1"=20' V:1"=5'  
 SPU W/O# - NS 50118  
 APPROVED  
 INSPECTOR'S BOOK

**Leary Ave. N.W.**  
 Street Lighting Plan  
 Street Improvement Plan/Profile

SDOT PROJECT NO.	T05-2727
VAULT PLAN NO.	
SHEET	5 OF 6