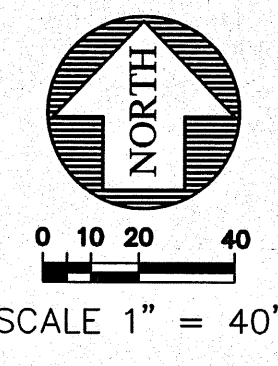
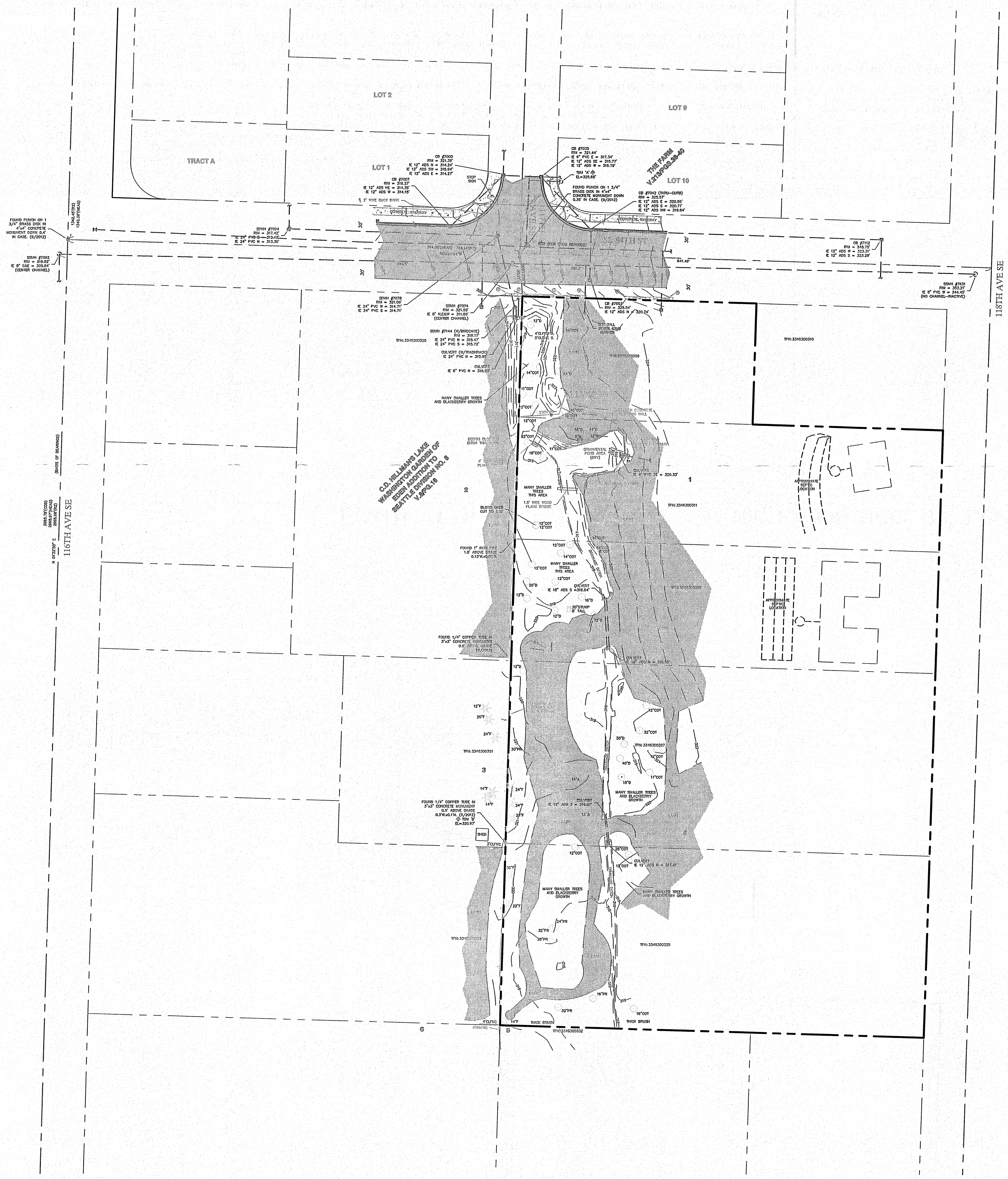


PORTION OF THE SW 1/4 OF THE NW 1/4 OF SEC. 33, TWN. 24N., RGE. 5E., W.M.



- ROCKERY INFORMATION**
- ① RKT=320.55
RKB=319.88
 - ② RKT=321.17
RKB=319.82
 - ③ RKT=323.33
RKB=321.86
 - ④ RKT=325.21
RKB=324.29
 - ⑤ RKT=327.07
RKB=326.16
 - ⑥ RKT=330.02
RKB=328.29
- RKT: TOP OF ROCKERY
RKB: BOTTOM OF ROCKERY

15445 53RD AVE. S.
SEATTLE, WA 98188
PHONE: (206) 431-7970
FAX: (206) 388-1648
WEB SITE:
PACENG.COM

**Pacific
Engineering
Design, LLC**

Civil Engineering and
Planning Consultants

LAWRENCE PARK STORM

CITY OF NEWCASTLE

FOR:
CITY OF NEWCASTLE
12835 NEWCASTLE WAY, SUITE 200
NEWCASTLE, WA 98056-1316
PHONE: (425) 649-4444

PROJECT NO.: 12041
DRAWN BY: ENM
ISSUE DATE: 01-25-2013
SHEET REV.:

EXISTING CONDITIONS PLAN

EXISTING CONDITIONS PLAN

C06

SHEET OF 5

**SURVEY INFORMATION
PROVIDED BY:**
AXIS SURVEY & MAPPING
13005 NE 126TH PLACE
KIRKLAND, WA 98034
PHONE (425) 823-5700
FAX (425) 823-6700