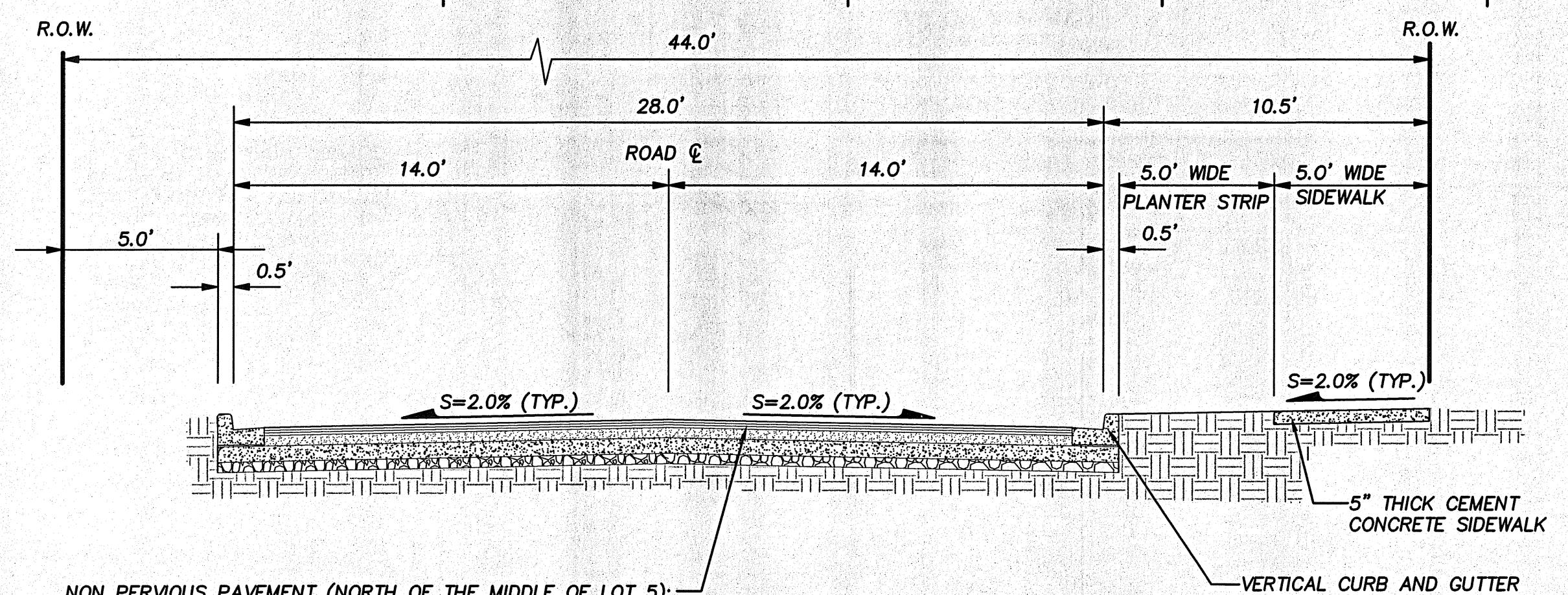
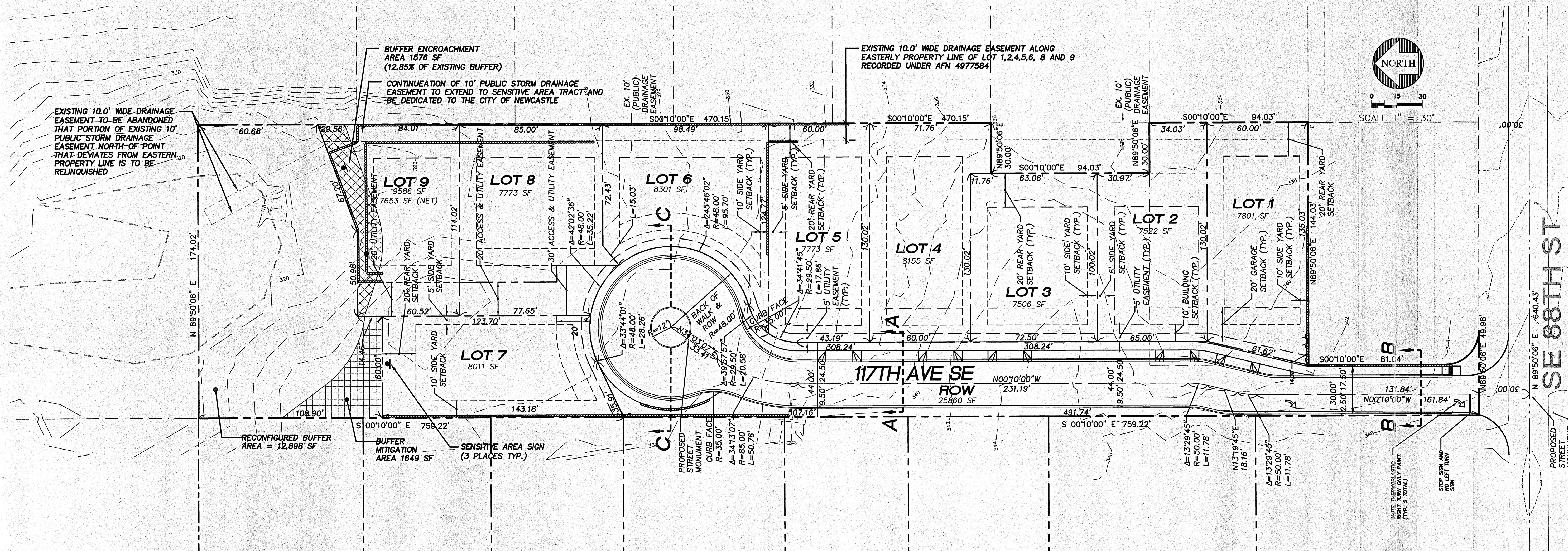
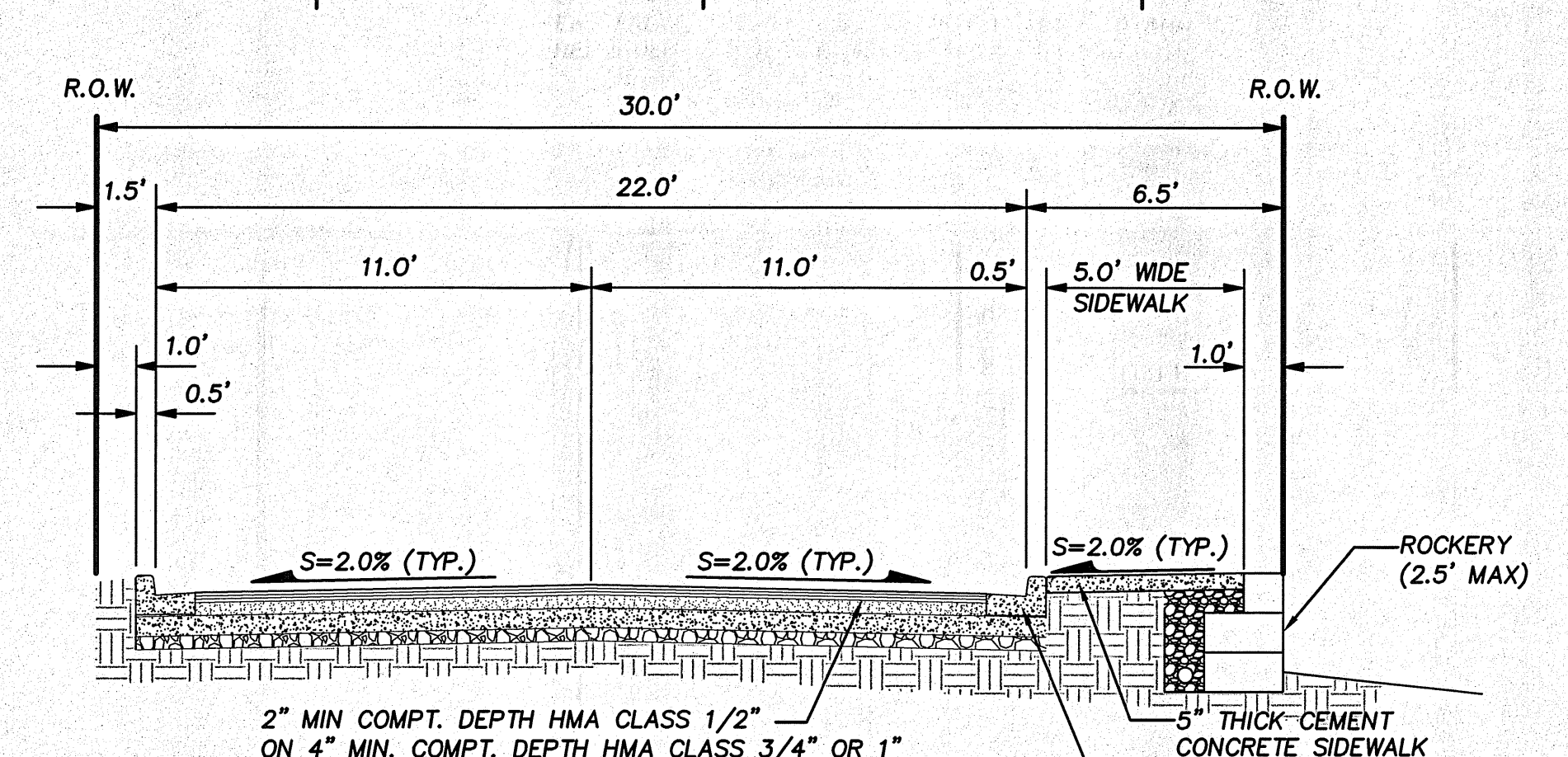


PORTION OF THE SW 1/4 OF THE NW 1/4 OF SEC. 33, TWN. 24N., RGE. 5E., W.M.

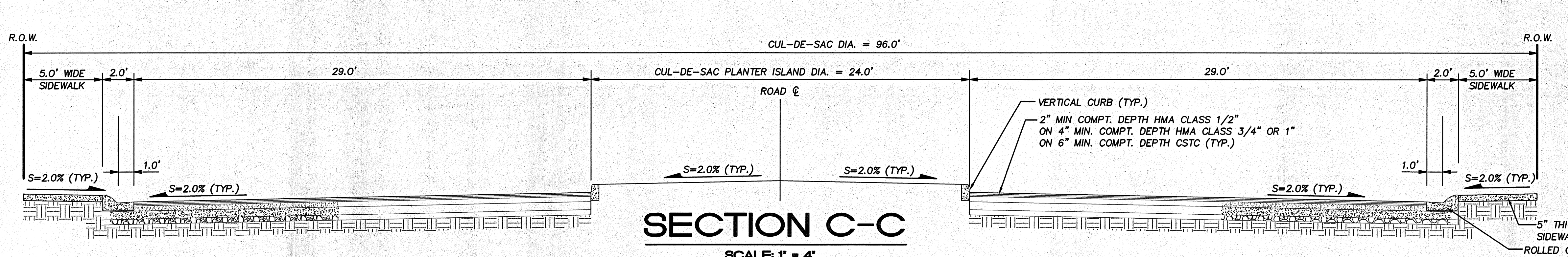


SECTION A-A
SCALE: 1" = 4'



SECTION B-B
SCALE: 1" = 4'

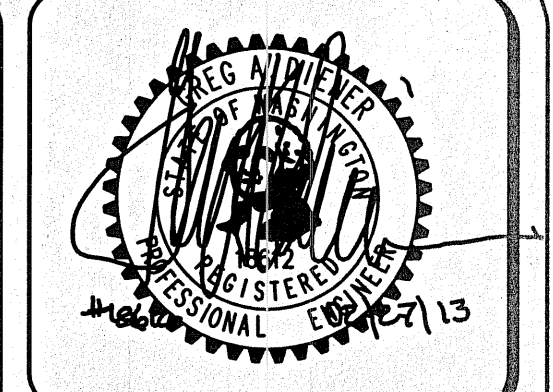
NON PERVIOUS PAVEMENT (NORTH OF THE MIDDLE OF LOT 5):
 2" MIN. COMPT. DEPTH HMA CLASS 1/2"
 ON 4" MIN. COMPT. DEPTH HMA CLASS 3/4" OR 1"
 ON 6" MIN. COMPT. DEPTH CSTC
 PERVIOUS PAVEMENT (SOUTH OF THE MIDDLE OF LOT 5 AND NORTH OF LOT 1):
 4" MIN. COMPT. DEPTH POROUS ASPHALT PAVEMENT
 ON 8" MIN. 5/8"(-) CRUSHED SURFACING



SECTION C-C
SCALE: 1" = 4'

LEGEND

	BOUNDARY / R.O.W. LINE
	CENTERLINE
	LOT LINE
	BLDG SETBACK LINE
	GARAGE SETBACK LINE
	ROW LINE
	APPROXIMATE LOT/TRACT AREA
	7,544 SF
	WETLAND
	WETLAND BUFFER
	WETLAND EUFFER MITIGATION / ENCROACHMENT AREA



15445 53RD AVE. S.
 SEATTLE, WA 98188
 PHONE: (206) 431-7970
 FAX: (206) 388-1648
 WEB SITE: PACENG.COM

Pacific Engineering Design, LLC
 Civil Engineering and Planning Consultants

LAWRENCE PARK
 CITY OF NEWCASTLE

FOR: PAUL G. EBENSTENER
 12835 NEWCASTLE WAY, SUITE 200
 NEWCASTLE, WA 98056-1316
 PHONE: (425) 649-4444

PROJECT NO.: 12025
 DRAWN BY: ENM
 ISSUE DATE: 02-27-13
 SHEET REV.:

HORIZONTAL CONTROL PLAN AND ROAD SECTIONS

C15
 SHEET 15 OF 15