

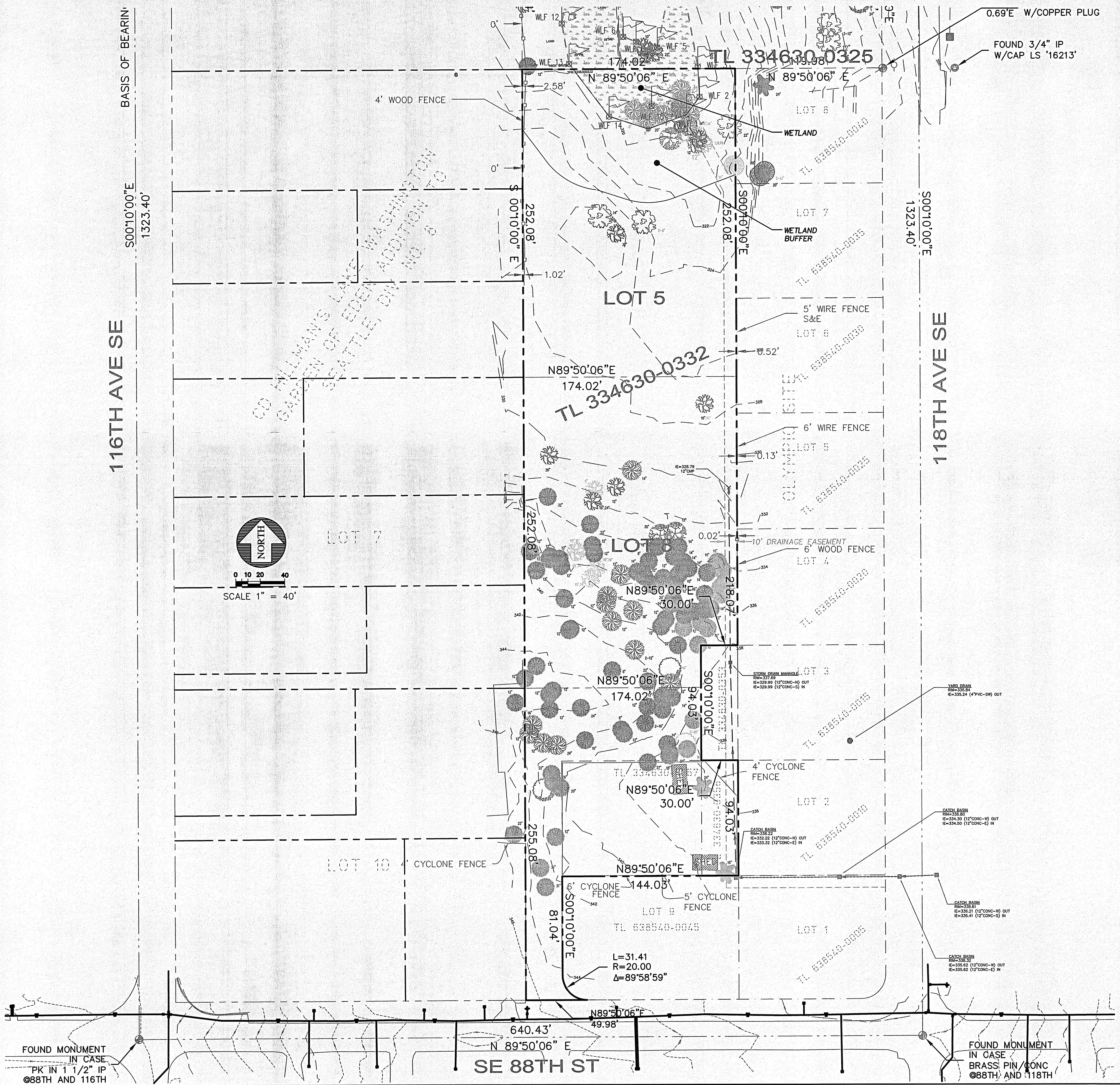
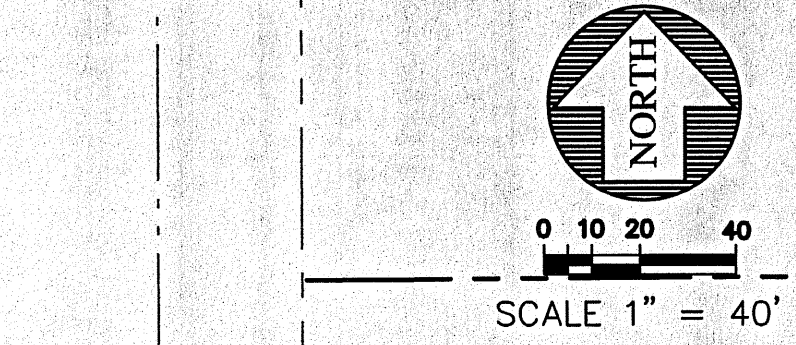
PORTION OF THE SW 1/4 OF THE NW 1/4 OF SEC. 33, TWN. 24N., RGE. 5E., W.M.

116TH AVE SE

118TH AVE SE

S00°10'00"E  
1323.40'

S00°10'00"E  
1323.40'



FOUND MONUMENT  
IN CASE  
PK IN 1 1/2" IP  
@88TH AND 116TH

FOUND MONUMENT  
IN CASE  
BRASS PIN / CONC  
@88TH AND 118TH

**SURVEY INFORMATION PROVIDED BY:**  
BAIMA & HOLMBERG INC.  
ENGINEERS & SURVEYORS  
100 FRONT STREET SOUTH  
ISSAQUAH, WA 98027  
PHONE (425) 392-0250  
FAX (425) 391-3055



15445 53RD AVE. S.  
SEATTLE, WA 98188  
PHONE: (206) 431-7970  
FAX: (206) 988-1648  
WEB SITE: PACENG.COM

**Pacific Engineering Design, LLC**

Civil Engineering and Planning Consultants

**LAWRENCE PARK**  
CITY OF NEWCASTLE

FOR:  
PAUL G. EBERSTEIN  
12835 NEWCASTLE WAY, SUITE 200  
NEWCASTLE, WA 98056-1316  
PHONE: (425) 649-4444

PROJECT NO.: 12025  
DRAWN BY: ENM  
ISSUE DATE: 02-27-2013  
SHEET REV.:

**BOUNDARY AND TOPOGRAPHY AND EXISTING CONDITIONS**

**C14**  
SHEET 14 OF 15