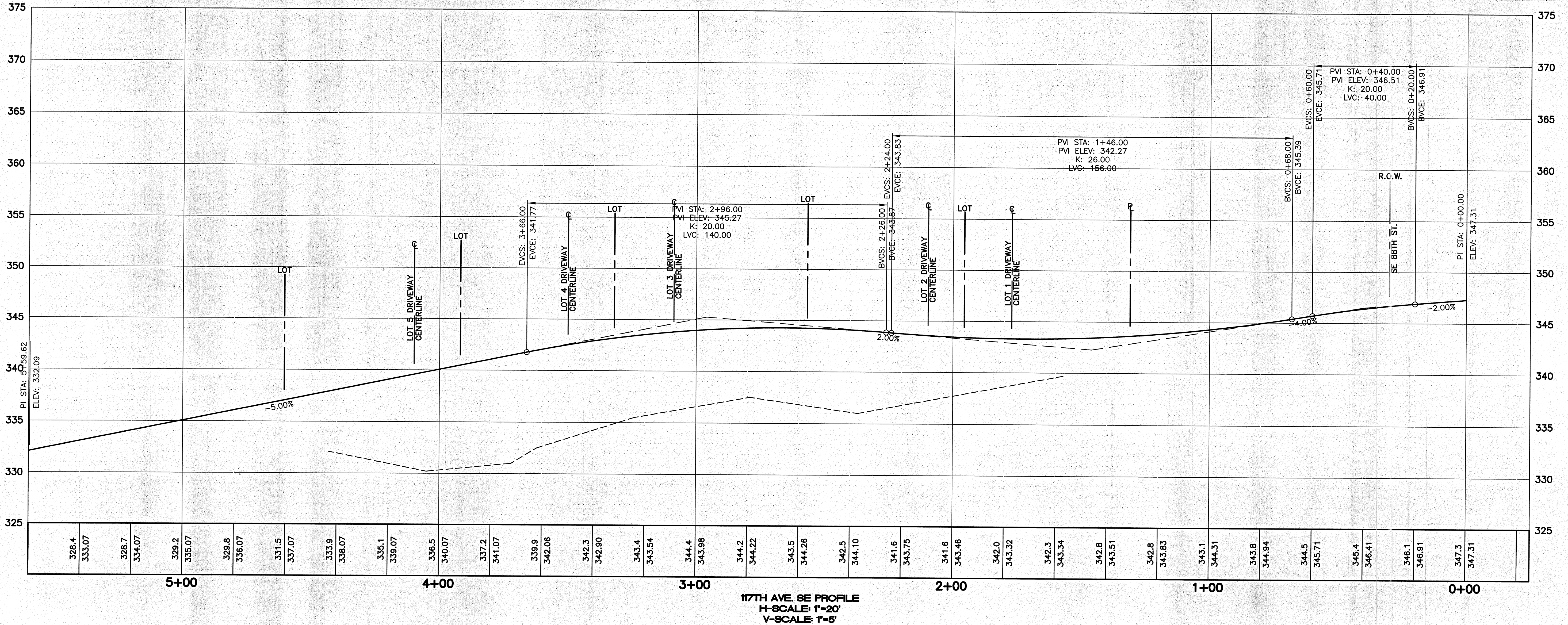
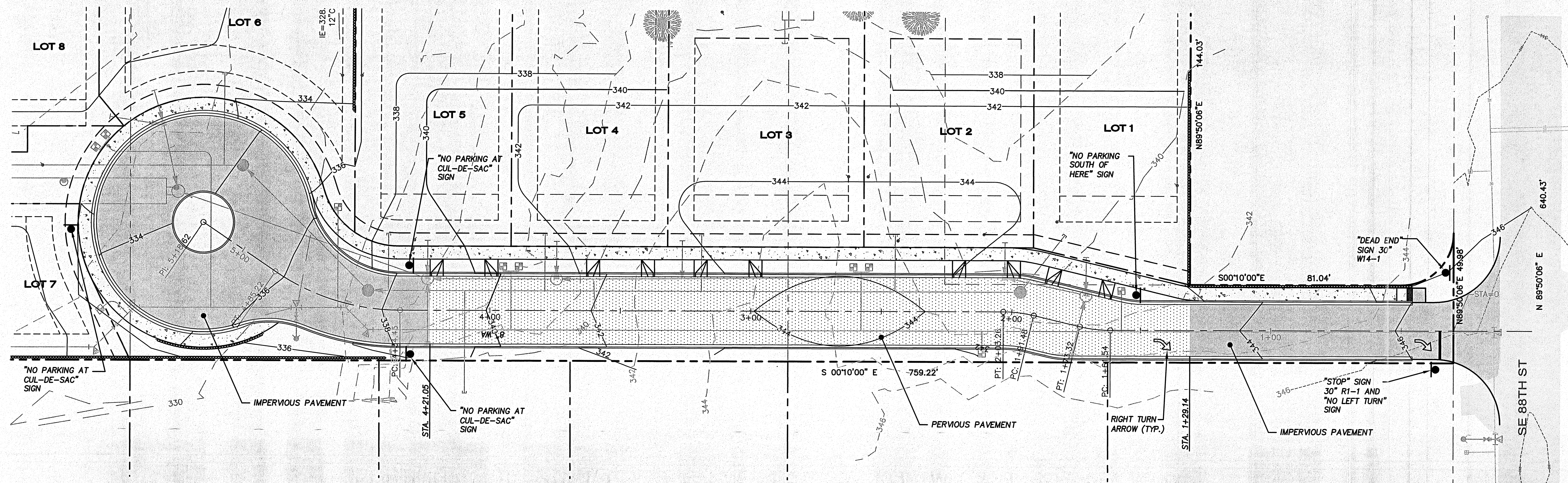


PORTION OF THE SW 1/4 OF THE NW 1/4 OF SEC. 33, TWN. 24N., RGE. 5E., W.M.



15445 53RD AVE. S.  
SEATTLE, WA 98188  
PHONE: (206) 431-7970  
FAX: (206) 388-1648  
WEB SITE: PACENG.COM

**Pacific Engineering Design, LLC**  
Civil Engineering and Planning Consultants

**LAWRENCE PARK**  
CITY OF NEWCASTLE

FOR:  
PAUL G. EBENSTENER  
LOZIER DEVELOPMENT, LLC.  
BELLVIEW, WA 98004  
PHONE: (425) 635-9938

PROJECT NO.: 12025  
DRAWN BY: ENM  
ISSUE DATE: XX-XX-XXXX  
SHEET REV.: 01-03-2013

117TH AVE. SE PLAN AND PROFILE AND CHANNELIZATION PLAN

12025CJ01.DWG  
**C09**  
SHEET 09 OF 15