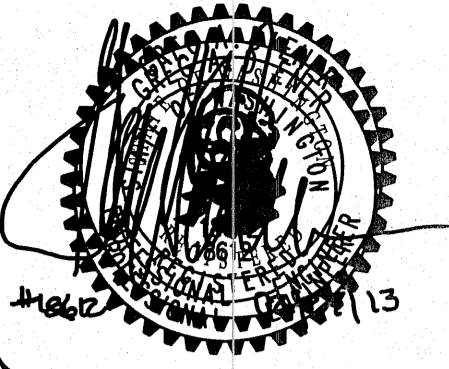


PORTION OF THE SW 1/4 OF THE NW 1/4 OF SEC. 33, TWN. 24N., RGE. 5E., W.M.

APPROVED FOR CONSTRUCTION

BY: _____ DATE: _____
CITY OF NEWCASTLE

THESE DRAWINGS ARE APPROVED FOR CONSTRUCTION FOR A PERIOD OF 12 MONTHS FROM THE DATE SHOWN HEREON. THE CITY RESERVES THE RIGHT TO MAKE REVISIONS, ADDITIONS, DELETIONS, OR MODIFICATIONS SHOULD CONSTRUCTION BE DELAYED BEYOND THIS TIME LIMITATION. THE CITY, BY APPROVING THESE DRAWINGS, ASSUMES NO LIABILITY IN REGARDS TO THEIR ACCURACY OR OMISSIONS.



15445 53RD AVE. S.
SEATTLE, WA 98188
PHONE: (206) 431-7970
FAX: (206) 988-1648
WEB SITE: PACENG.COM

Pacific Engineering Design, LLC
Civil Engineering and Planning Consultants

LAWRENCE PARK
CITY OF NEWCASTLE

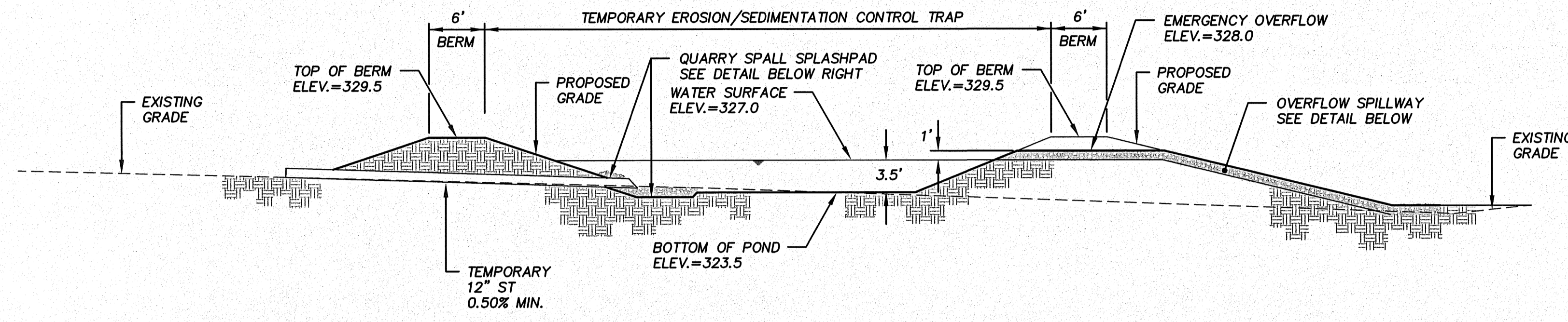
FOR: PAUL G. EBENSTENER
LOZIER DEVELOPMENT, LLC
1203 14TH AVENUE SE
BELLEVUE, WA 98004
PHONE: (425) 635-3868

PROJECT NO.: 12025
DRAWN BY: ENM
ISSUE DATE: 02-27-13
SHEET REV.:

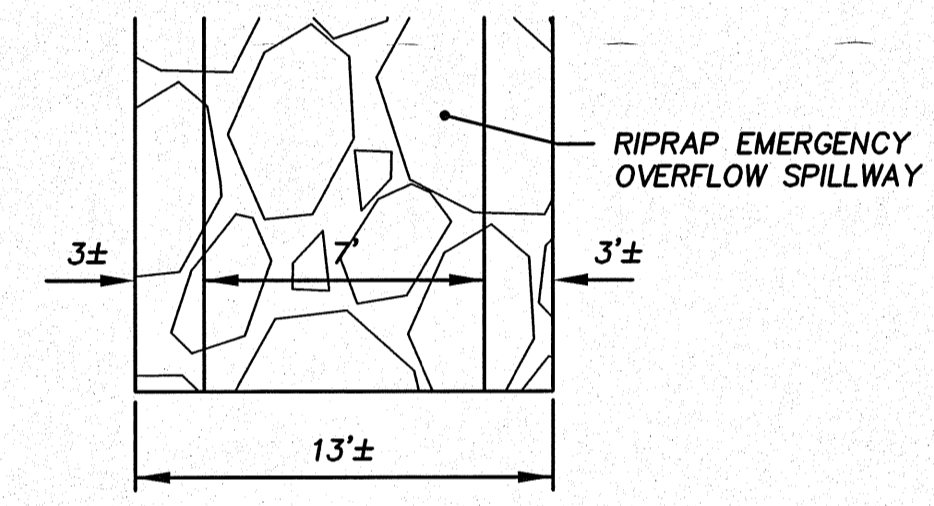
TEMPORARY EROSION + SEDIMENT CONTROL DETAILS

C06
SHEET 06 OF 15

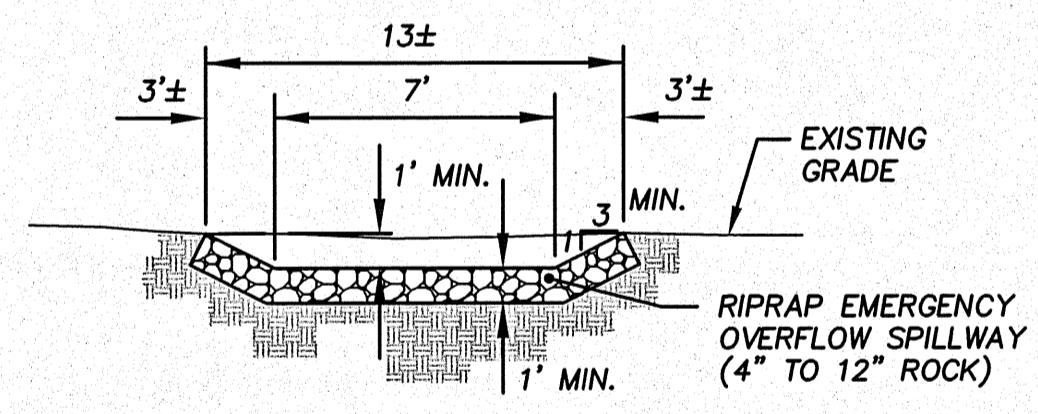
SEDIMENTATION CONTROL TRAP
TOP OF BERM=329.5
WATER SURFACE=327.0
BOTTOM OF POND=323.5
REQUIRED SURFACE AREA=1,352 SF
PROVIDED SURFACE AREA=1,363 SF



SECTION A-A

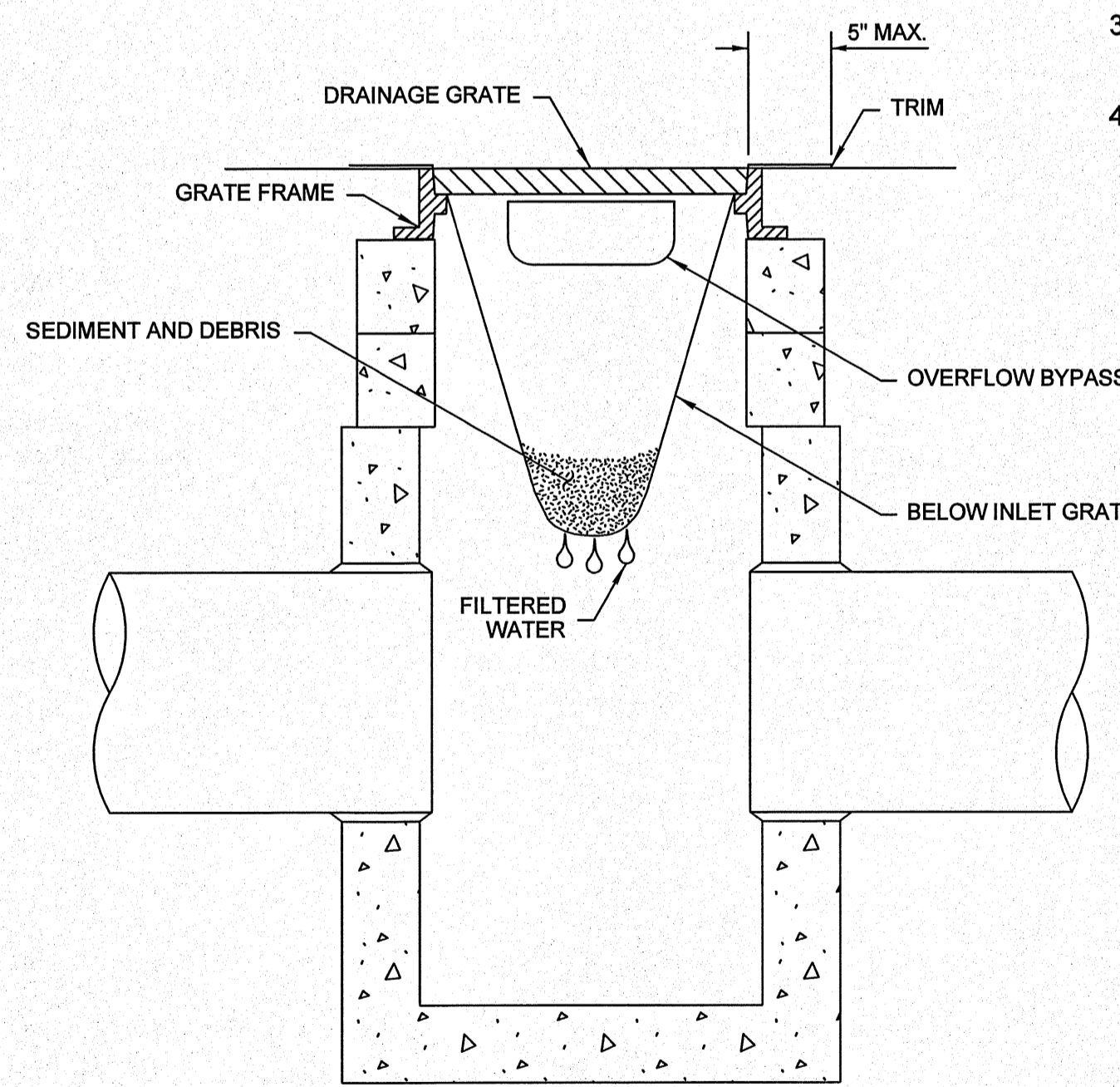


PLAN VIEW

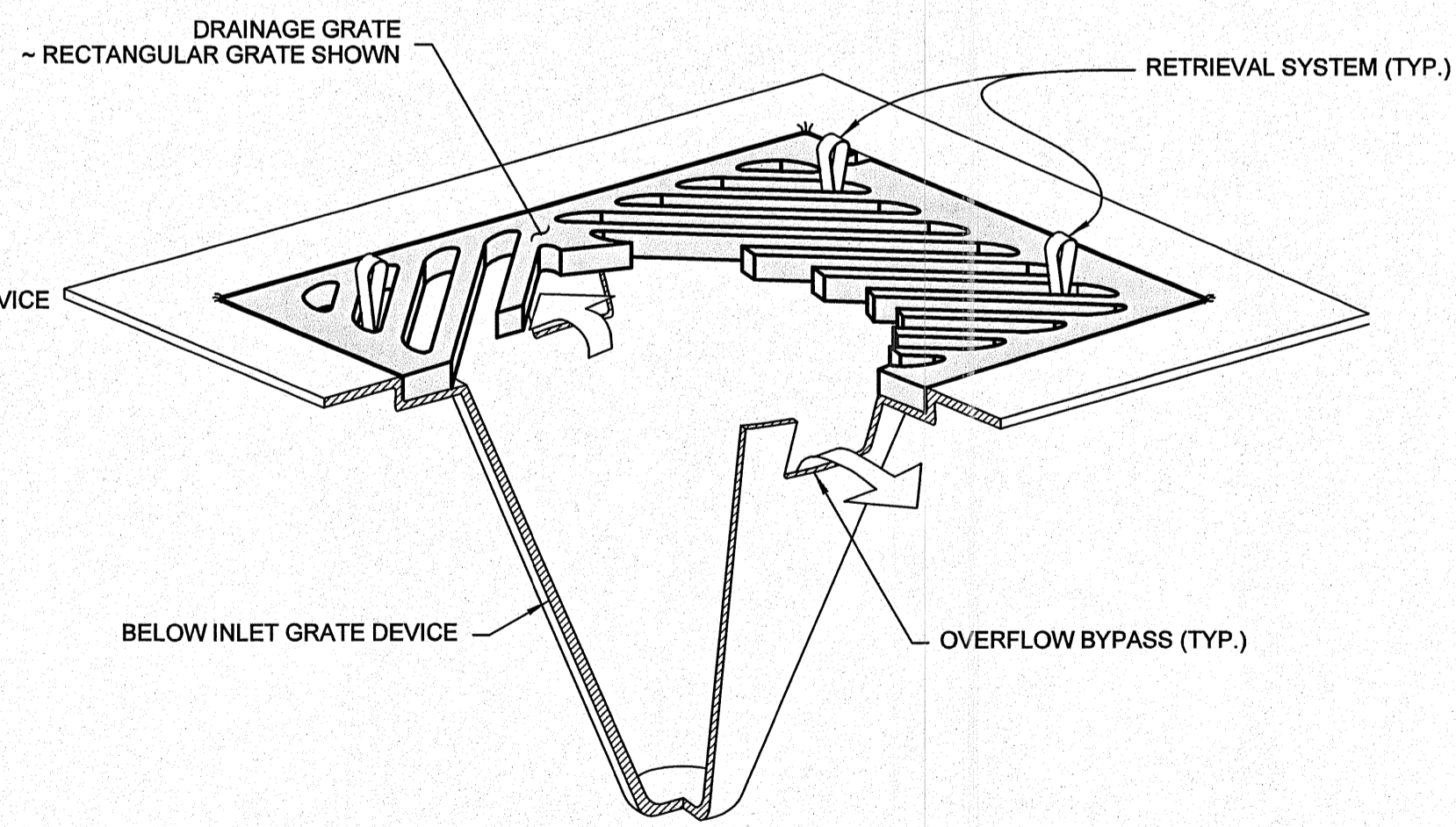


SECTION

OVERFLOW SPILLWAY



SECTION VIEW
NOT TO SCALE



ISOMETRIC VIEW

NOTES

1. Size the Below Inlet Grate Device (BIGD) for the storm water structure it will service.
2. The BIGD shall have a built-in high-flow relief system (overflow bypass).
3. The retrieval system must allow removal of the BIGD without spilling the collected material.
4. Perform maintenance in accordance with Standard Specification 8-01.3(15).

STORM DRAIN INLET PROTECTION
WSDOT STANDARD PLAN I-40.20-00