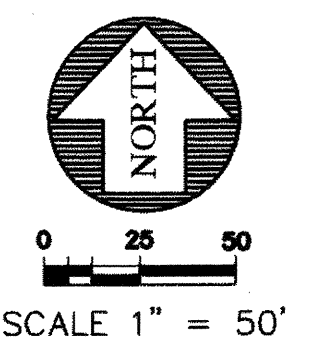
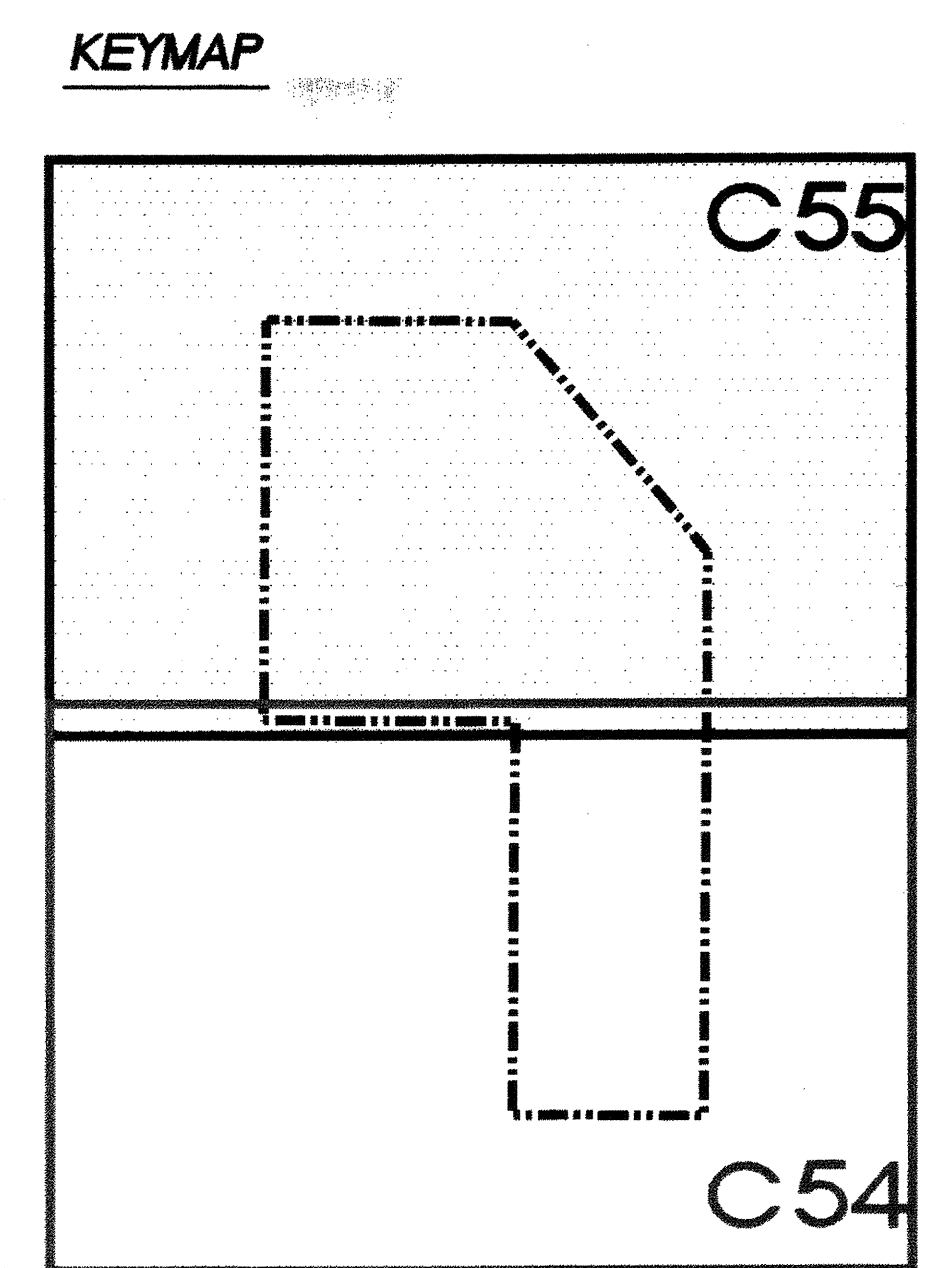
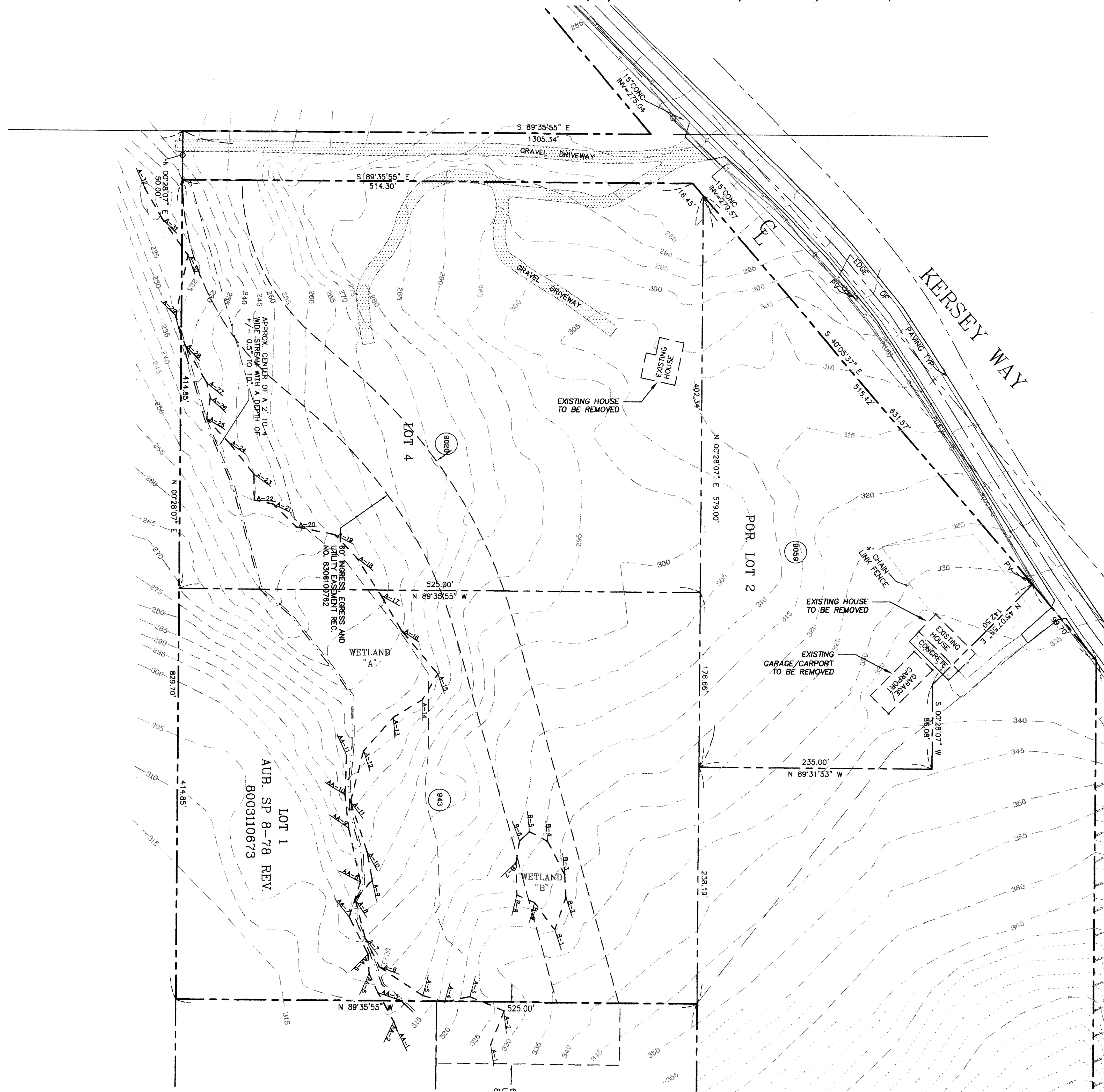


PORTION OF THE SW 1/4, SECTION 32, T. 21 N., R. 5 E., W.M.



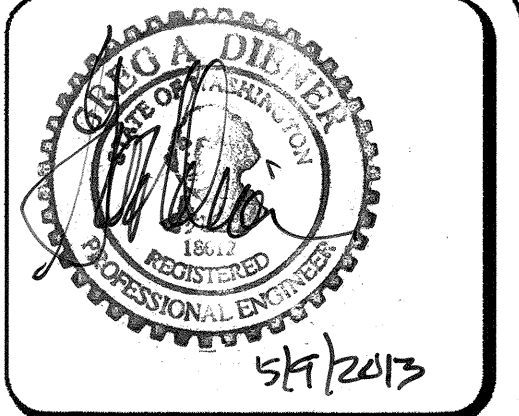
LOT 1  
AUB. SP 8-78 REV.  
8003110673

RECORD DRAWING CERTIFICATION  
THESE DRAWINGS CONFORM TO THE CONTRACTOR'S  
CONSTRUCTION RECORDS.

BY: \_\_\_\_\_ DATE \_\_\_\_\_  
TITLE/POSITION: \_\_\_\_\_  
CONFIRMED BY CITY: \_\_\_\_\_ DATE \_\_\_\_\_

PROJECT REF: FAC07-0016  
*HS May 10, 2013*  
THESE PLANS ARE "APPROVED" FOR CONFORMANCE WITH  
THE CITY OF AUBURN'S ENGINEERING DIVISION  
REQUIREMENTS.

APPROVED BY: *Dennis Sell*  
DATE APPROVED: *5/15/13*



15445 53RD AVE. S.  
SEATTLE, WA 98188  
PHONE: (206) 431-7970  
FAX: (206) 388-1648  
WEB SITE: PACENG.COM

Pacific  
Engineering  
Design, LLC  
Civil Engineering and  
Planning Consultants

LAKELAND HILLS ESTATES  
CITY OF AUBURN

FOR:  
ENOVA NORTHWEST, LLC.  
C/O ENOVA SMALL BUSINESS  
17857 1ST AVENUE SOUTH, PMB#2  
NORMANDY PARK, WA 98148  
PHONE: (206) 428-3864  
FAX: (206) 296-6616

PROJECT NO.: 12022  
DRAWN BY: ENM  
ISSUE DATE: 07-17-07  
SHEET REV.:

EXISTING  
CONDITIONS PLAN

05056E001-C44-C45.DWG  
**C55**  
SHEET 55 OF 55