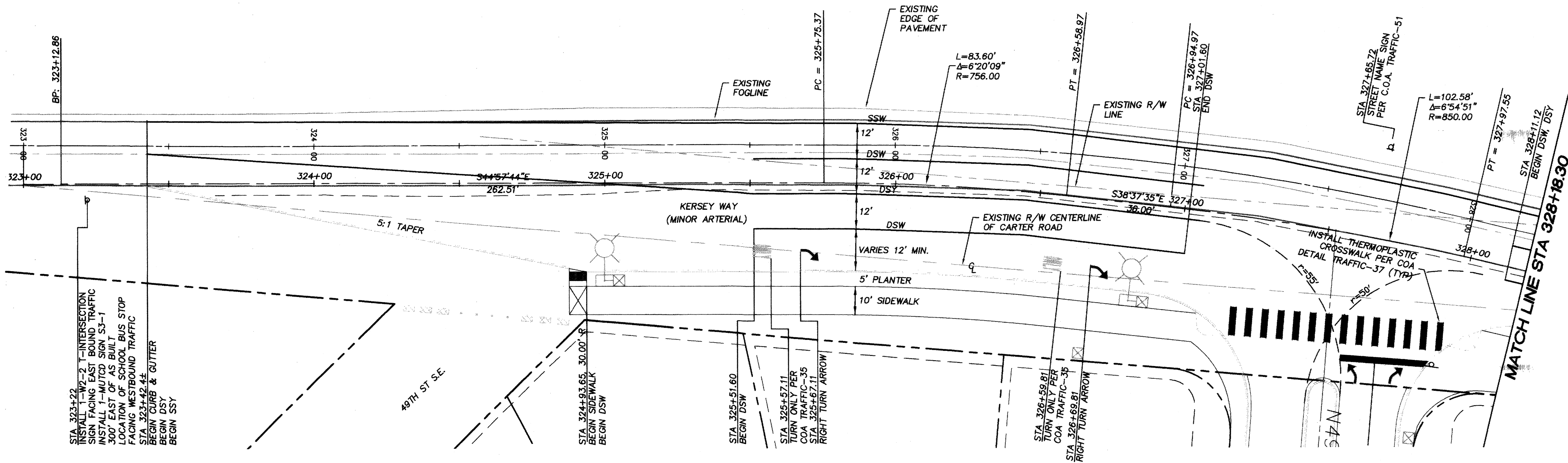
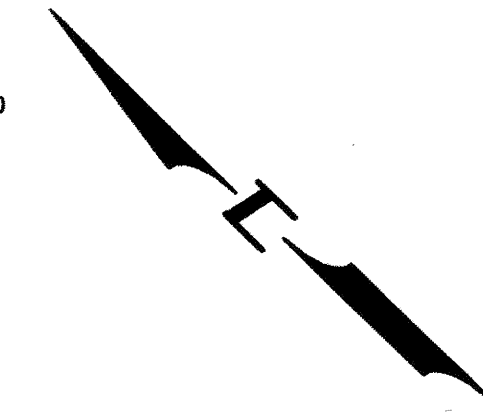
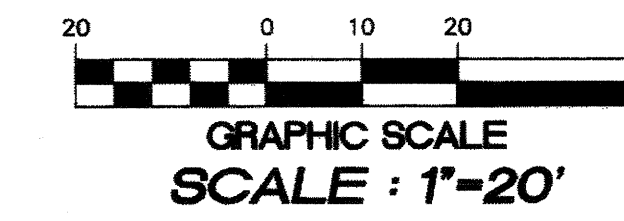
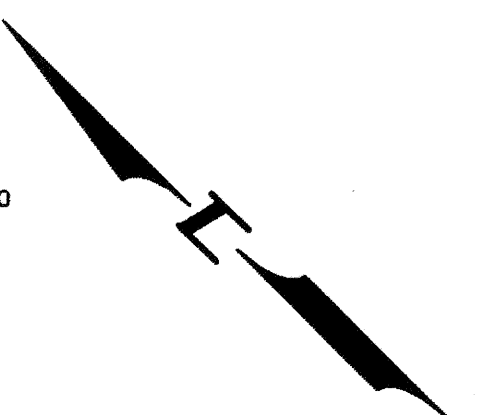
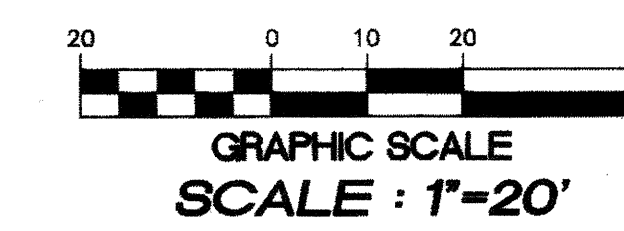
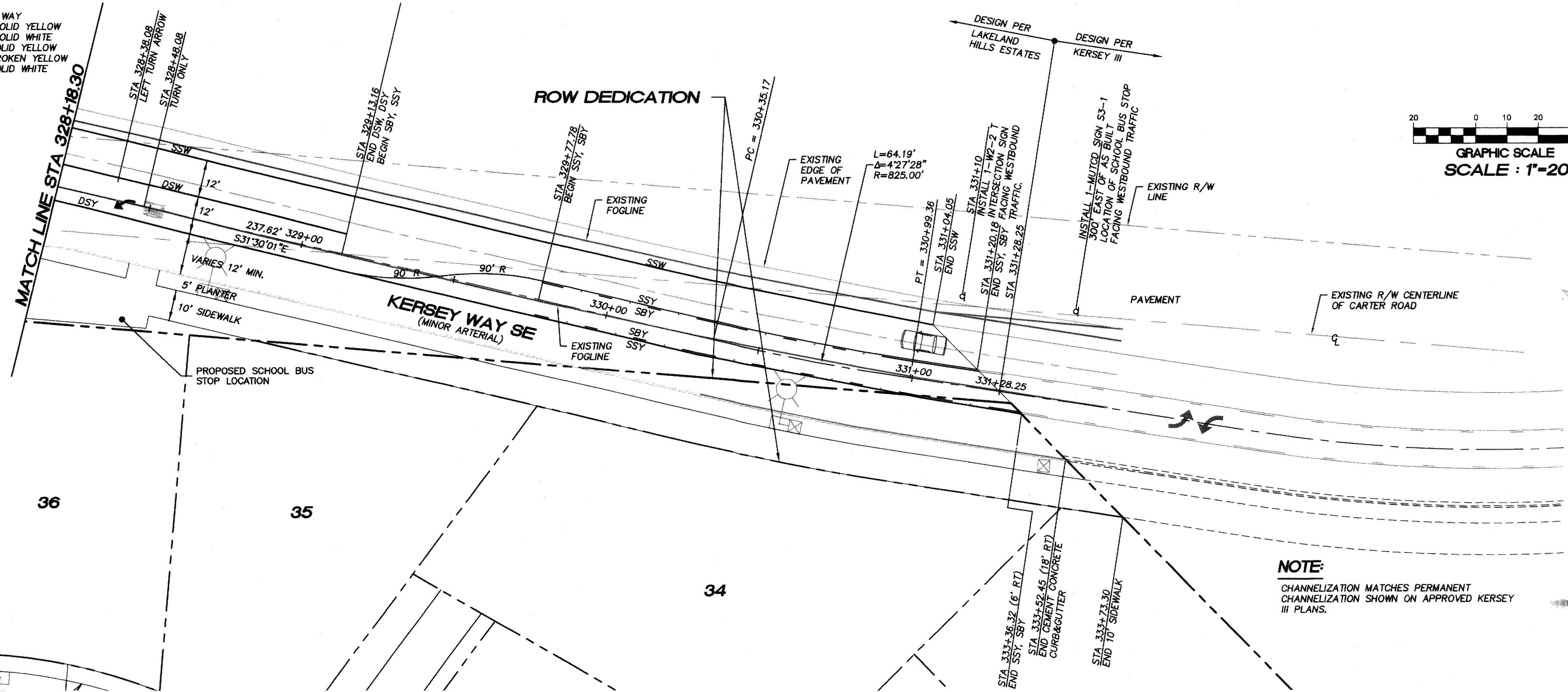


PORTION OF THE SW 1/4, SECTION 32, T. 21 N., R 5 E., W.M.

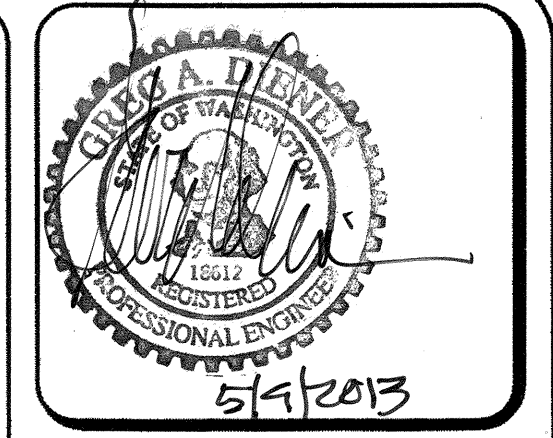


LEGEND

- R/W RIGHT OF WAY
- DSY DOUBLE SOLID YELLOW
- DSW DOUBLE SOLID WHITE
- SSY SINGLE SOLID YELLOW
- SBY SINGLE BROKEN YELLOW
- SSW SINGLE SOLID WHITE



NOTE:
CHANNELIZATION MATCHES PERMANENT CHANNELIZATION SHOWN ON APPROVED KERSEY III PLANS.



15445 53RD AVE. S.
SEATTLE, WA 98188
PHONE: (206) 431-7970
FAX: (206) 388-1648
WEB SITE: PACENG.COM

Pacific Engineering Design, LLC
Civil Engineering and Planning Consultants

CITY OF AUBURN

LAKELAND HILLS ESTATES
FOR: DENOVA NORTH-WEST, LLC.
C/O MILLERIAL BUILDERS
18811 MILLERIAL BLVD. N. #2
SEASIDE, WA 98148
PHONE: (206) 423-3884
FAX: (206) 299-9519

PROJECT NO.: 05056
DRAWN BY: ENM
ISSUE DATE: 07-17-07
SHEET REV.: 3-20-2013

KERSEY WAY CHANNELIZATION PLAN

RECORD DRAWING CERTIFICATION
THESE DRAWINGS CONFORM TO THE CONTRACTOR'S CONSTRUCTION RECORDS.
BY: _____ DATE _____
TITLE/POSITION: _____
CONFIRMED BY CITY: _____ DATE _____

PROJECT REF: FAC07-0016
HS May 10, 2013
THESE PLANS ARE "APPROVED" FOR CONFORMANCE WITH THE CITY OF AUBURN'S ENGINEERING DIVISION REQUIREMENTS.
APPROVED BY: *Dennis Solle*
DATE APPROVED: 5/15/13

050560501.DWG
C53
SHEET 53 OF 55