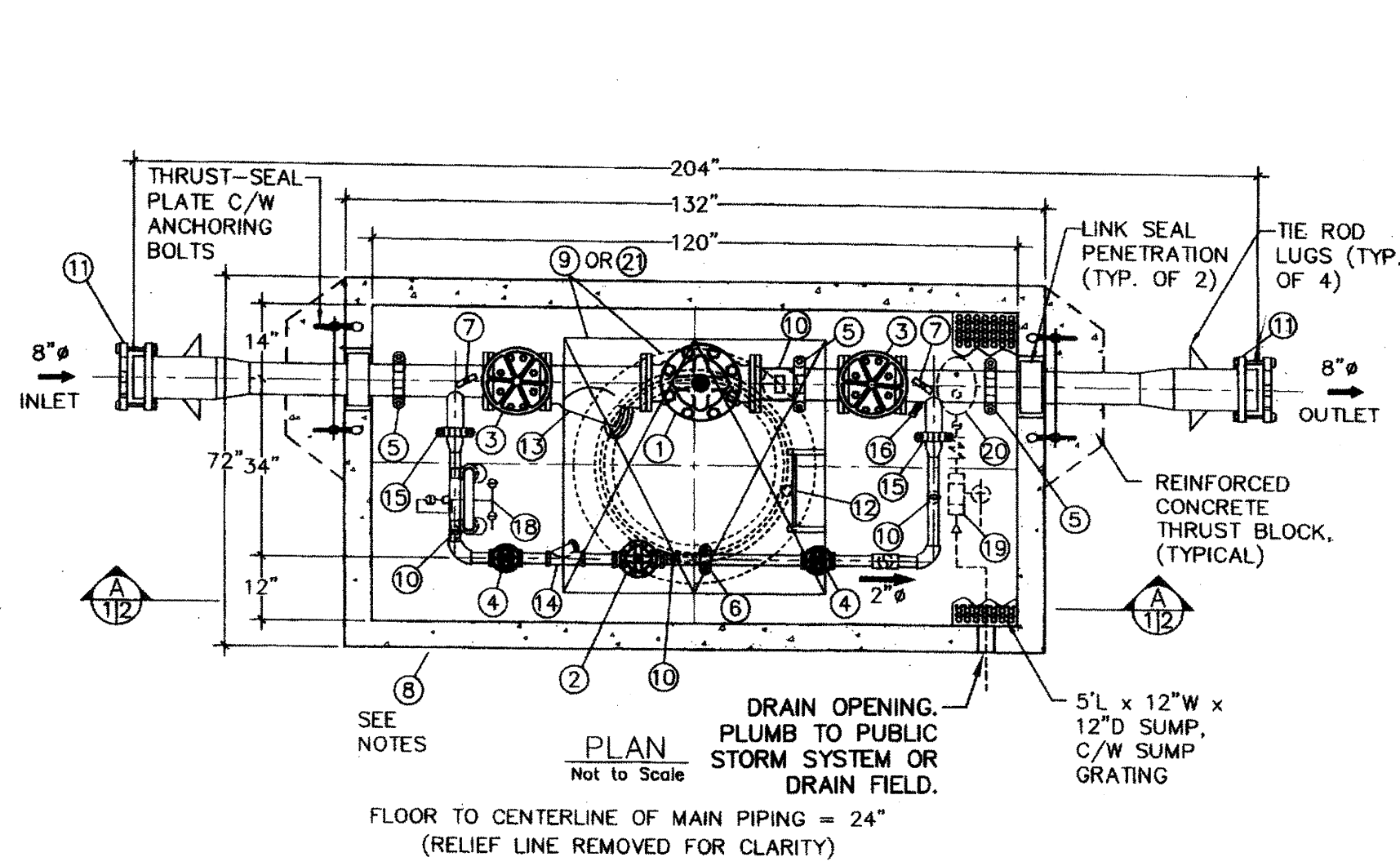


PORTION OF THE SW 1/4, SECTION 32, T. 21 N., R. 5 E., W.M.

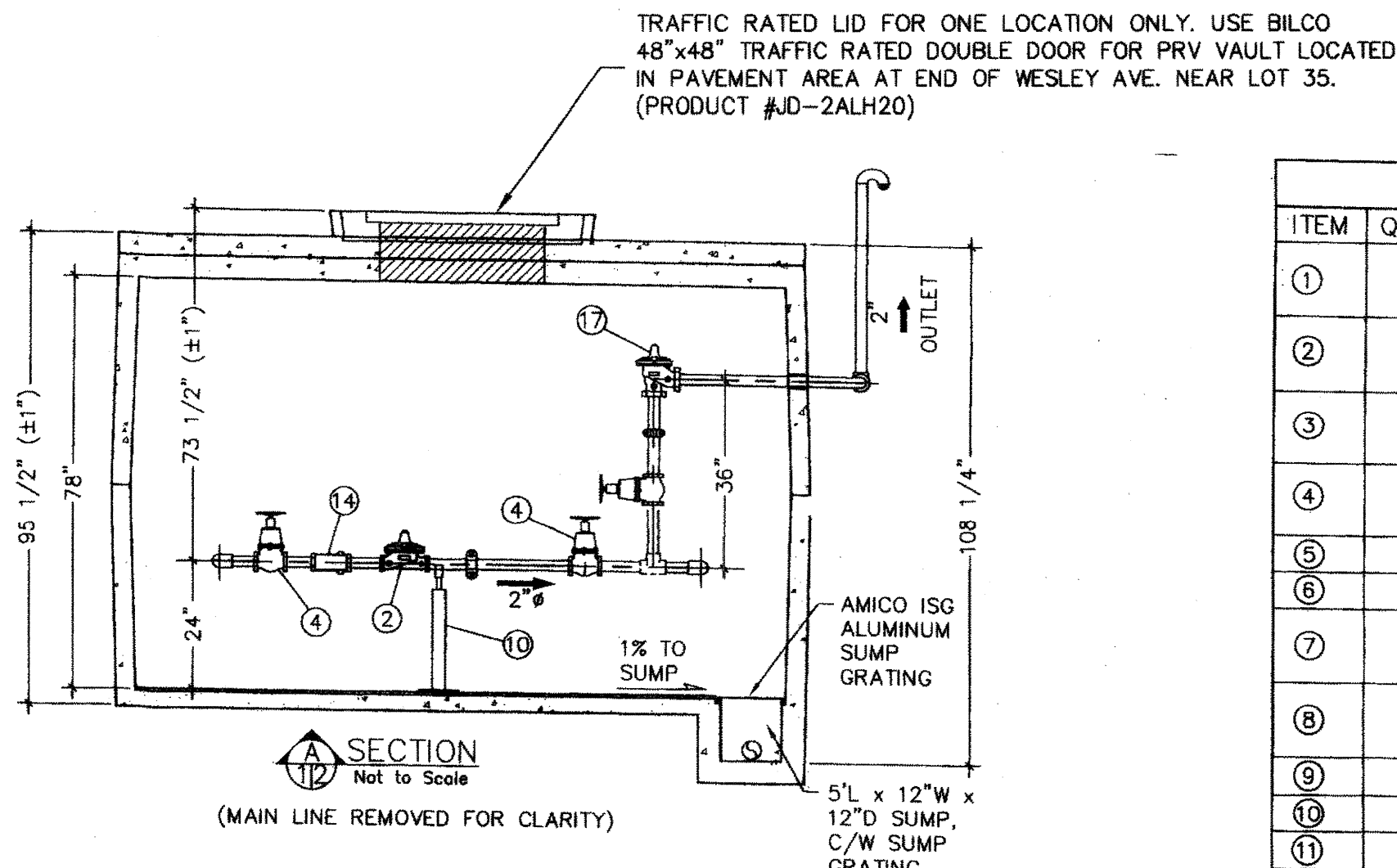


STANDARD FABRICATION & FINISHING SPECIFICATION

- FABRICATED STAINLESS STEEL PIPING & FITTINGS TO BE SCHEDULE 40 FOR SIZES TO 10".
- ALL 3" AND LARGER PIPE, INSIDE WETTED SURFACES TO BE SANDBLASTED, EPOXY LINED AND COATED TO AWWA C-210 AND NSF-61 SPECIFICATION. FINISH COATING WILL BE BLUE ENAMEL.

NOTES:

- VAULT #10565 (H-20 LOADING) INSIDE DIMENSIONS: 10' L x 5' W x 6'-6" H
- VAULT WEIGHT: TOP.....12,300 Lbs BOTTOM.....12,000 Lbs (WEIGHTS ±10%)



STANDARD FABRICATION & FINISHING SPECIFICATION

- FABRICATED STAINLESS STEEL PIPING & FITTINGS TO BE SCHEDULE 40 FOR SIZES TO 10".
- ALL 3" AND LARGER PIPE, INSIDE WETTED SURFACES TO BE SANDBLASTED, EPOXY LINED AND COATED TO AWWA C-210 AND NSF-61 SPECIFICATION. FINISH COATING WILL BE BLUE ENAMEL.

NOTES:

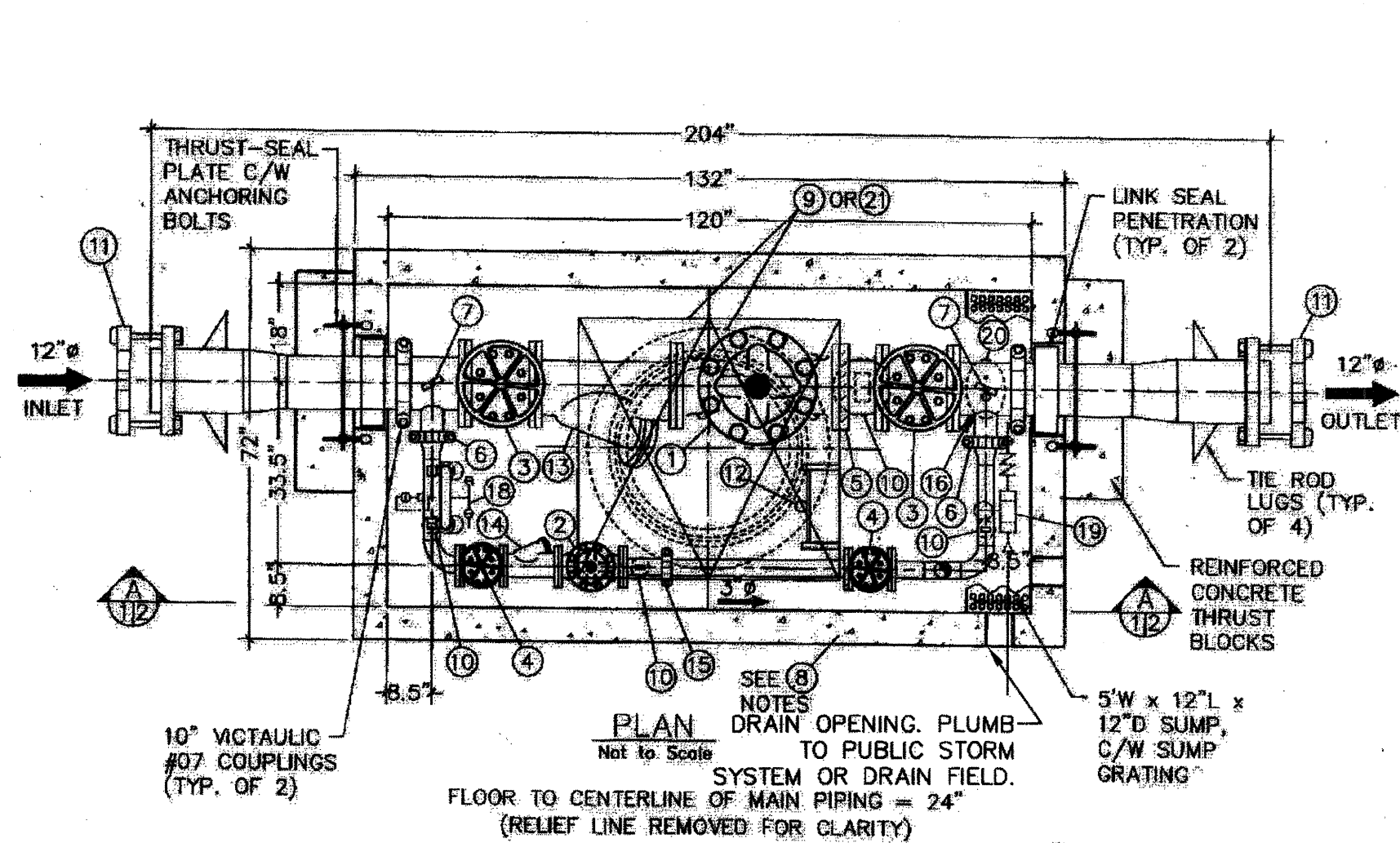
- VAULT #10565 (H-20 LOADING) INSIDE DIMENSIONS: 10' L x 5' W x 6'-6" H
- VAULT WEIGHT: TOP.....12,300 Lbs BOTTOM.....12,000 Lbs (WEIGHTS ±10%)

ITEM	QTY	DESCRIPTION	ITEM	QTY	DESCRIPTION
1	1	6" CLA-VAL 90G-01YBS Pressure Reducing Valve c/w X101 Pos. Ind., DIBT-#150 Flgd	14	1	2" MUELLER 11M Cast Iron Body "Y"
2	1	2" CLA-VAL 90G-01YBS Pressure Reducing Valve c/w X101 Pos. Ind., DIBT-Threaded	15	2	Strainer c/w Blowdown Valve - Threaded
3	2	6" MUELLER A2360-6W41 W55 RW NRS Gate Valve c/w Handwheel - #150 Flgd	16	1	3" VICTAULIC #07 Coupling
4	2	2" MUELLER A2360-6W41 W55 RW NRS Gate Valve c/w Handwheel - Threaded	17	1	3/4" Hose Bib Assembly
5	3	6" VICTAULIC #07 Coupling	18	1	Pressure Relief Assembly, Includes: 2" CLA-VAL 50A-01B Pressure Relief Valve, Angle Style - #150 Flgd
6	1	2" VICTAULIC #07 Coupling	19	1	2" VICTAULIC #07 Coupling
7	2	4" ENFM 6211 (0-200psi) Pressure Gauge c/w Gauge Cock	20	1	2" VICTAULIC #741 Coupling Adapter
8	1	#10565 Precast Concrete Vault c/w White Latex Interior & Black Tar Exterior	21	1	2" Mueller A2360 RW NRS Gate Valve
9	1	BILCO 48" x 48" Al. Hatch DOUBLE DOOR	22	1	Duplex Pilot Strainer (Pipe Mounted)
10	4	Adjustable Pipe Supports	23	1	Automatic Sump Drain Ejector
11	2	8" SMITH BLAIR Transition Couplings	<b>OPTIONAL EQUIPMENT</b>		
12	1	Aluminum Ladder With Safety Post	24	1	1" APCO 143C.1 Combination Air Valve c/w Isolation Valve, Extension & Brass Union
13	1	6" MUELLER 758 Cast Iron Body "Y" Strainer c/w Blowdown Valve - #125 Flgd	25	1	30" Manhole Cover & Frame (H20 Loading)

Sheet 2 of 3

PRESSURE REDUCING VALVE STATION FOR 8" WATERLINE

PER C.O.A. STD. DTLS. WATER 10A, 10B, & 10C

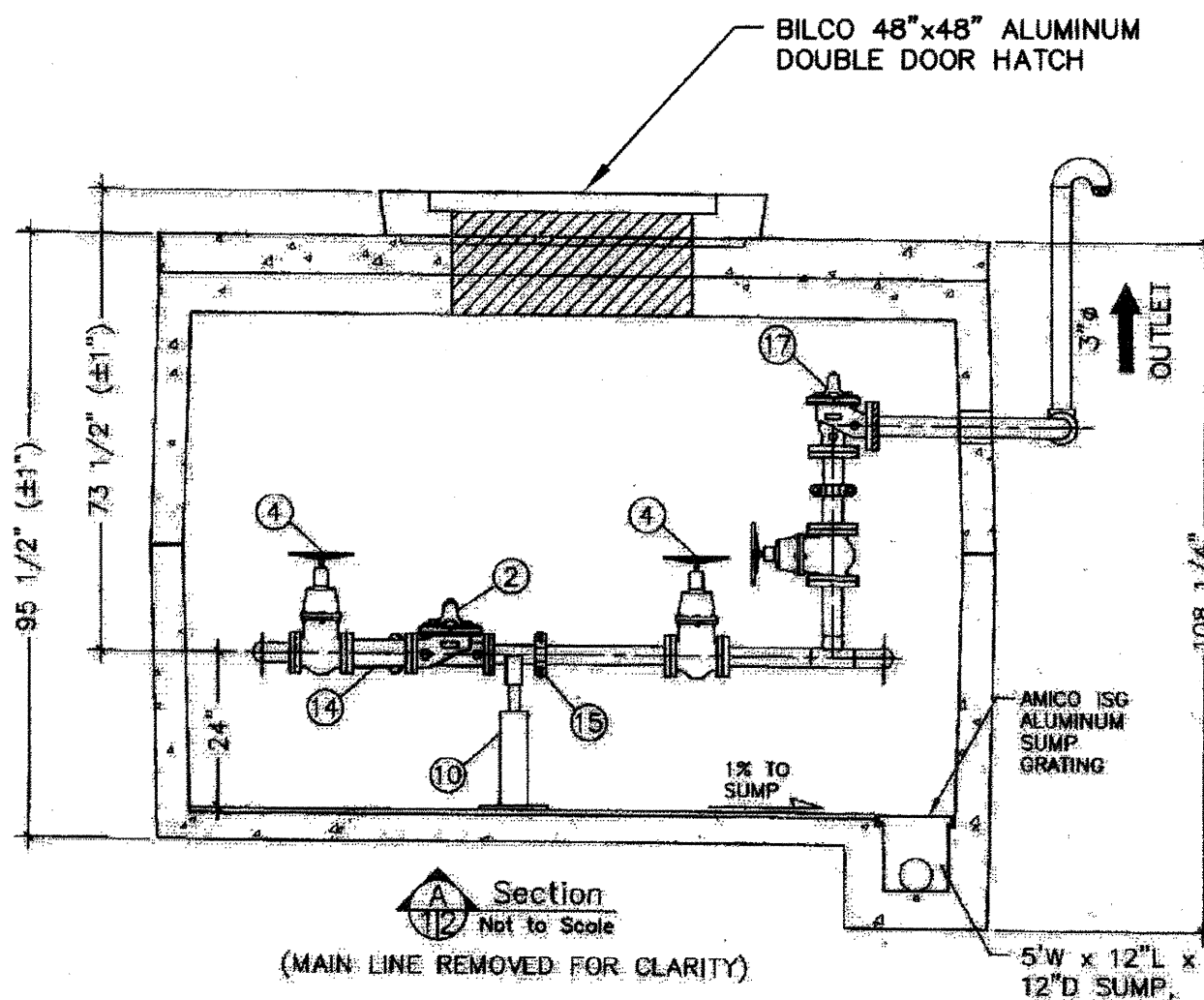


STANDARD FABRICATION & FINISHING SPECIFICATION:

- FABRICATED STAINLESS STEEL PIPING & FITTINGS TO BE SCHEDULE 40 FOR SIZES TO 10", AND 3/8" WALL FOR 12" AND LARGER.
- ALL 3" AND LARGER PIPE, INSIDE WETTED SURFACES TO BE SANDBLASTED, EPOXY LINED AND COATED TO AWWA C-210 AND NSF-61 SPECIFICATION. FINISH COATING WILL BE BLUE ENAMEL.

NOTES:

- VAULT #10565 (H-20 LOADING) INSIDE DIMENSIONS: 10' L x 5' W x 6'-6" H
- VAULT WEIGHT: TOP.....12,300 Lbs BOTTOM.....12,000 Lbs (WEIGHTS ±10%)



STANDARD FABRICATION & FINISHING SPECIFICATION:

- FABRICATED STAINLESS STEEL PIPING & FITTINGS TO BE SCHEDULE 40 FOR SIZES TO 10", AND 3/8" WALL FOR 12" AND LARGER.
- ALL 3" AND LARGER PIPE, INSIDE WETTED SURFACES TO BE SANDBLASTED, EPOXY LINED AND COATED TO AWWA C-210 AND NSF-61 SPECIFICATION. FINISH COATING WILL BE BLUE ENAMEL.

NOTES:

- VAULT #10565 (H-20 LOADING) INSIDE DIMENSIONS: 10' L x 5' W x 6'-6" H
- VAULT WEIGHT: TOP.....12,300 Lbs BOTTOM.....12,000 Lbs (WEIGHTS ±10%)

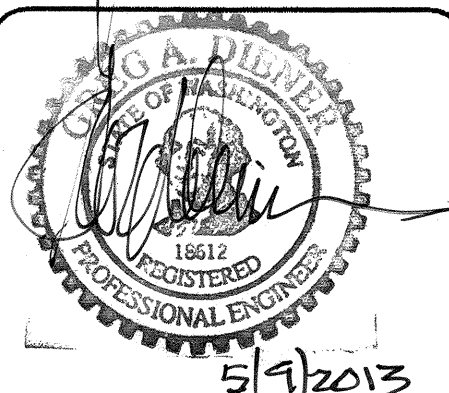
ITEM	QTY	DESCRIPTION	ITEM	QTY	DESCRIPTION
1	1	10" CLA-VAL 90G-01YBS Pressure Reducing Valve c/w X101 Pos. Ind., DIBT-#150 Flgd	14	1	3" MUELLER 11M Cast Iron Body "Y"
2	1	3" CLA-VAL 90G-01YBS Pressure Reducing Valve c/w X101 Pos. Ind., DIBT-#150 Flgd	15	1	Strainer c/w Blowdown Valve - #125 Flgd
3	2	10" MUELLER A2360-6W41 W55 RW NRS Gate Valve c/w Handwheel - #150 Flgd	16	1	3" VICTAULIC #07 Coupling
4	2	3" MUELLER A2360-6W41 W55 RW NRS Gate Valve c/w Handwheel - #150 Flgd	17	1	3/4" Hose Bib Assembly
5	1	10" VICTAULIC #07 Coupling	18	1	Pressure Relief Assembly, Includes: 3" CLA-VAL 50A-01B Pressure Relief Valve, Angle Style - #150 Flgd
6	2	4" VICTAULIC #07 Coupling	19	1	3" VICTAULIC #07 Coupling
7	2	4" ENFM 6211 (0-200psi) Pressure Gauge c/w Gauge Cock	20	1	3" VICTAULIC #741 Coupling Adapter
8	1	#10565 Precast Concrete Vault c/w White Latex Interior & Black Tar Exterior	21	1	3" Mueller A2360 RW NRS Gate Valve
9	1	BILCO 48" x 48" Al. Hatch DOUBLE DOOR	22	1	Duplex Pilot Strainer (Pipe Mounted)
10	4	Adjustable Pipe Supports	23	1	Automatic Sump Drain Ejector
11	2	12" SMITH BLAIR Transition Couplings	<b>OPTIONAL EQUIPMENT</b>		
12	1	Aluminum Ladder With Safety Post	24	1	1" APCO 143C.1 Combination Air Valve c/w Isolation Valve, Extension & Brass Union
13	1	10" MUELLER 758 Cast Iron Body "Y" Strainer c/w Blowdown Valve - #125 Flgd	25	1	30" Manhole Cover & Frame (H20 Loading)

Sheet 2 of 3

PRESSURE REDUCING VALVE STATION FOR 12" WATERLINE

PER C.O.A. STD. DTLS. WATER 12A, 12B, & 12C

Sheet 1 of 3



15445 53RD AVE. S.  
SEATTLE, WA 98188  
PHONE: (206) 431-7970  
FAX: (206) 388-1648  
WEB SITE: PACENG.COM

Pacific Engineering Design, LLC  
Civil Engineering and Planning Consultants

LAKELAND HILLS ESTATES  
CITY OF AUBURN

FOR:  
DENOVA NORTHWEST, LLC  
C/O MILLER BUILDERS  
17897 151ST AVE SOUTH, PWB#2  
AUBURN, WA 98002  
PHONE: (206) 429-3884  
FAX: (206) 299-9519

PROJECT NO.: 12022  
DRAWN BY: ENM  
ISSUE DATE: 07-17-07  
SHEET REV.: 3-20-2013

RECORD DRAWING CERTIFICATION  
THESE DRAWINGS CONFORM TO THE CONTRACTOR'S CONSTRUCTION RECORDS.  
BY: \_\_\_\_\_ DATE \_\_\_\_\_  
TITLE/POSITION: \_\_\_\_\_  
CONFIRMED BY CITY: \_\_\_\_\_ DATE \_\_\_\_\_

PRESSURE REDUCING STATION DETAILS

PROJECT REF: FAC07-0016  
H5 May 10, 2013  
THESE PLANS ARE "APPROVED" FOR CONFORMANCE WITH THE CITY OF AUBURN'S ENGINEERING DIVISION REQUIREMENTS.  
APPROVED BY: Dennis Sells  
DATE APPROVED: 5/15/13

05056D103-C33.DWG  
C47  
SHEET 47 OF 55