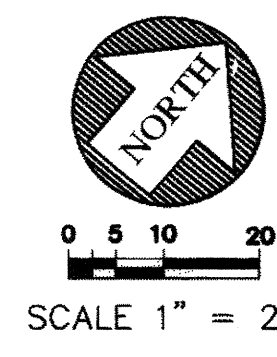
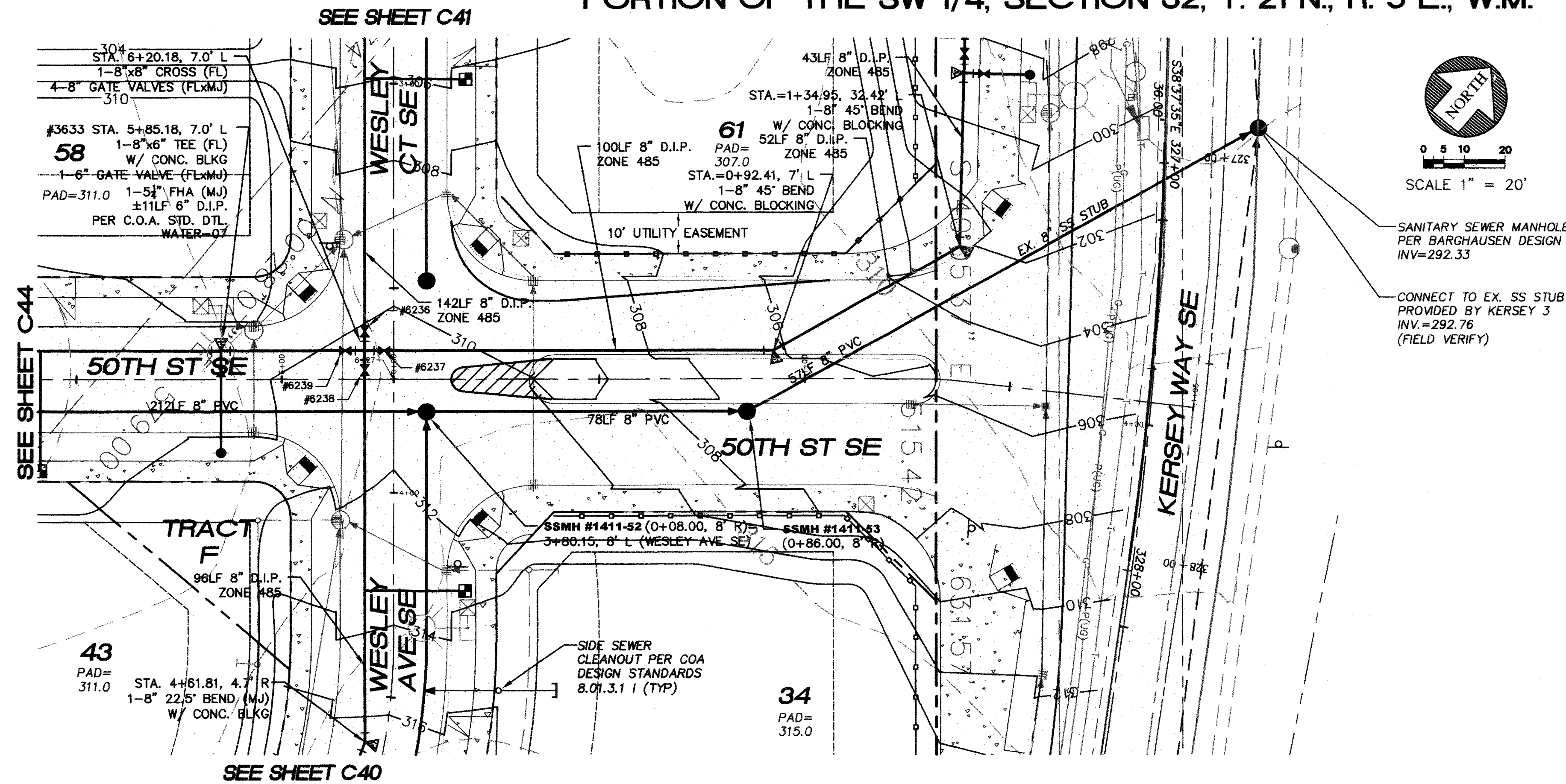


PORTION OF THE SW 1/4, SECTION 32, T. 21 N., R. 5 E., W.M.



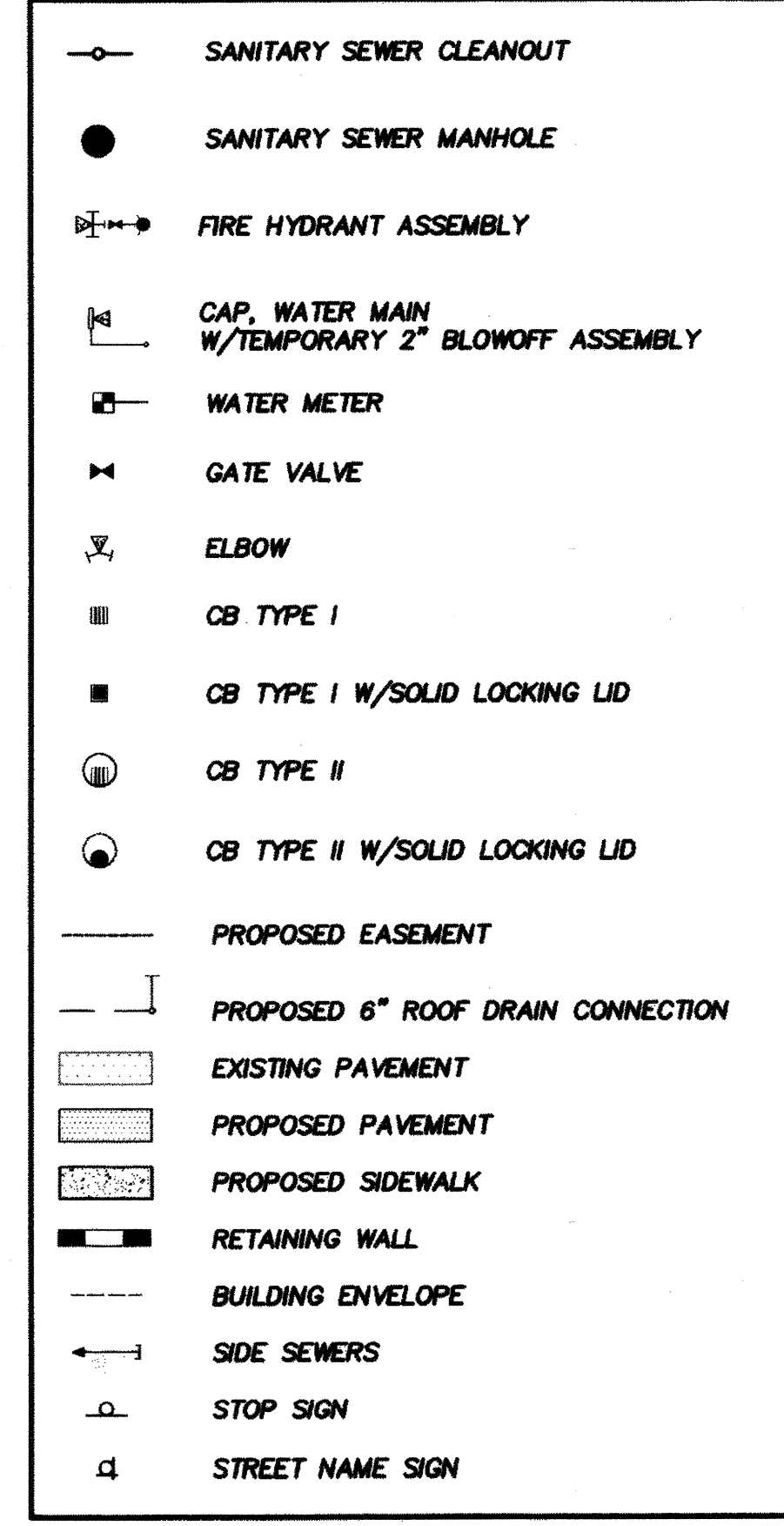
NOTES:

1. ALL PIPE SLOPES NOTED ARE FT/FT.
2. ALL SANITARY SEWER MANHOLES ARE STATIONED TO CENTER OF STRUCTURE
3. ALL PVC PIPE SHALL BE SDR-35 UNLESS OTHERWISE NOTED
4. SIDE SEWERS TO BE INSTALLED PER C.O.A. STD. DTL. SEWER-01 AND SEWER-02
5. SEWER STUBS TO BE MARKED USING A PAINTED 2"x4" MARKED "SEWER"
6. WATER SERVICE STUBS TO BE MARKED USING A PAINTED 2"x4" MARKED "WATER"
7. ALL SIDE SEWERS ARE STATIONED FROM THE NEAREST DOWNSTREAM MANHOLE
8. ALL WATER METERS SHALL BE 1/2 INCH PER C.O.A. STANDARD DETAIL WATER-13, 1" MINIMUM SERVICE LINE BETWEEN MAIN AND 1/2 INCH METER.
9. SANITARY SEWER MANHOLES SHALL BE EQUIPPED WITH A SOLID LOCKING LID WITH THE WORDS "CONFINED SPACE - PERMIT REQUIRED" CAST INTO LID.

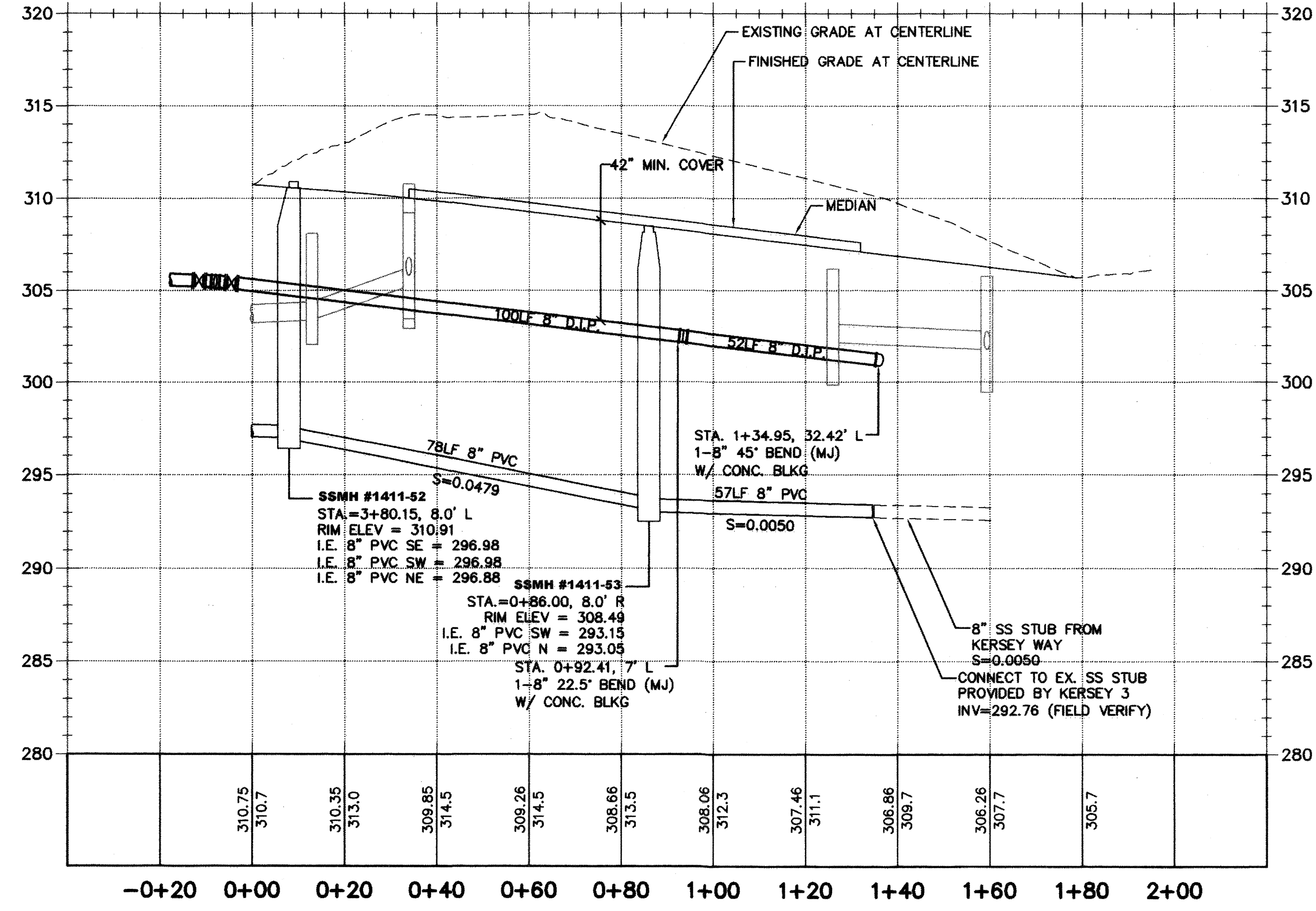
KEYMAP



LEGEND



SCALE : HORIZONTAL 1" = 20'  
VERTICAL 1" = 5'

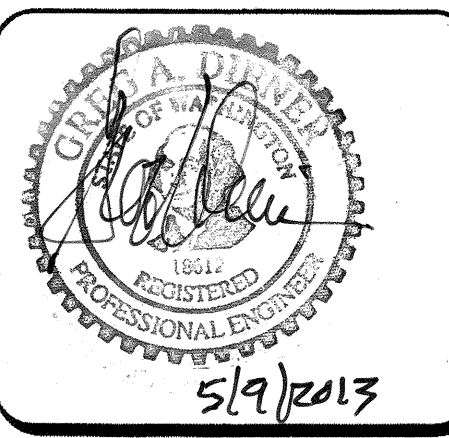


RECORD DRAWING CERTIFICATION  
THESE DRAWINGS CONFORM TO THE CONTRACTOR'S CONSTRUCTION RECORDS.

BY: \_\_\_\_\_ DATE \_\_\_\_\_  
TITLE/POSITION: \_\_\_\_\_  
CONFIRMED BY CITY: \_\_\_\_\_ DATE \_\_\_\_\_

PROJECT REF: FAC07-0016  
Hs May 10, 2013  
THESE PLANS ARE "APPROVED" FOR CONFORMANCE WITH THE CITY OF AUBURN'S ENGINEERING DIVISION REQUIREMENTS.

APPROVED BY: *Denni Sello*  
DATE APPROVED: 5/15/13



15445 53RD AVE. S.  
SEATTLE, WA 98188  
PHONE: (206) 431-7970  
FAX: (206) 388-1648  
WEB SITE: PACENG.COM

**Pacific Engineering Design, LLC**  
Civil Engineering and Planning Consultants

LAKELAND HILLS ESTATES  
CITY OF AUBURN

FOR DENOVA NORTHWEST, LLC  
C/O MILLERIAL BUILDERS  
17837 1ST AVENUE SOUTH, P.M.#2  
PACIFIC, WA 98148  
PHONE: (206) 435-3664  
FAX: (206) 299-9519

PROJECT NO.: 12022  
DRAWN BY: ENM  
ISSUE DATE: 07-17-07  
SHEET REV.: 3-20-2013

WATER AND SEWER PLAN AND PROFILE (50TH ST. SE)

05056WA13-C32.DWG  
**C45**  
SHEET 45 OF 55