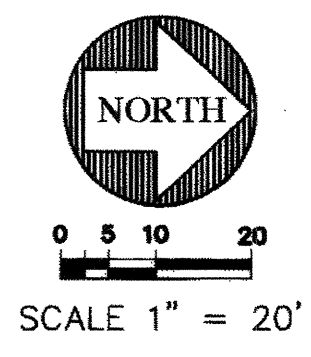
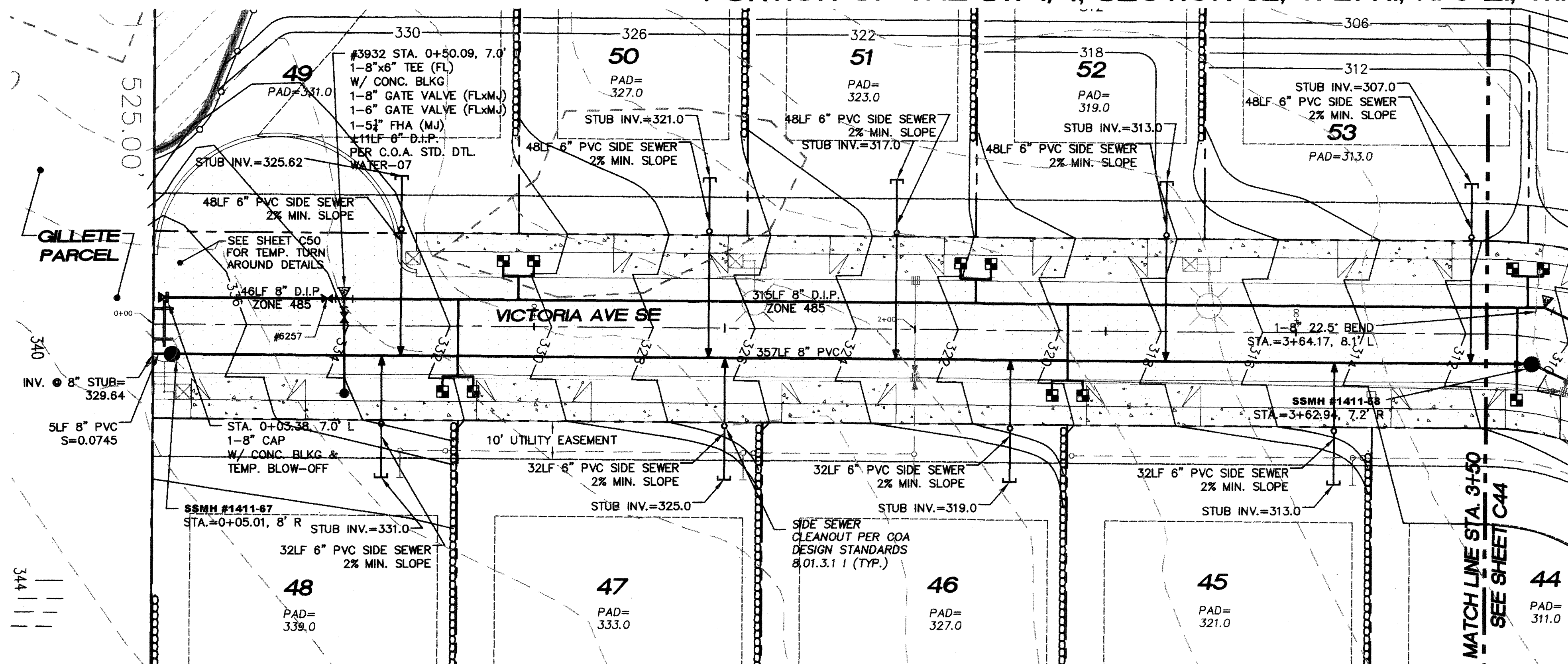
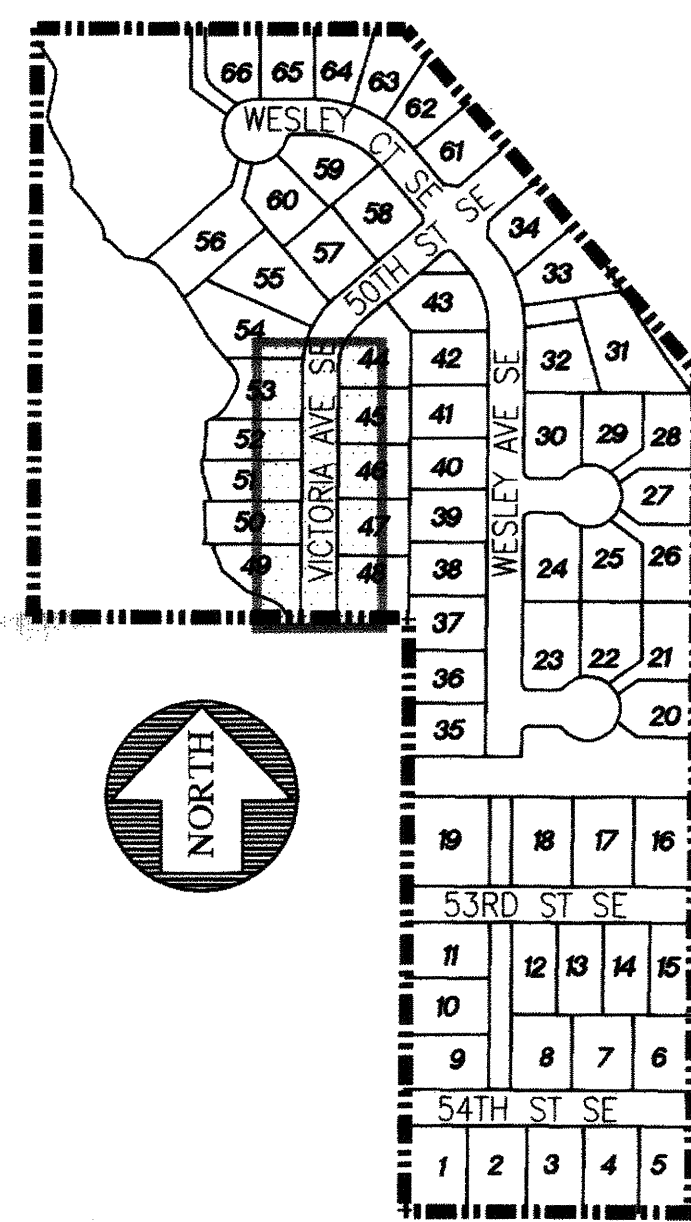


PORTION OF THE SW 1/4, SECTION 32, T. 21 N., R. 5 E., W.M.



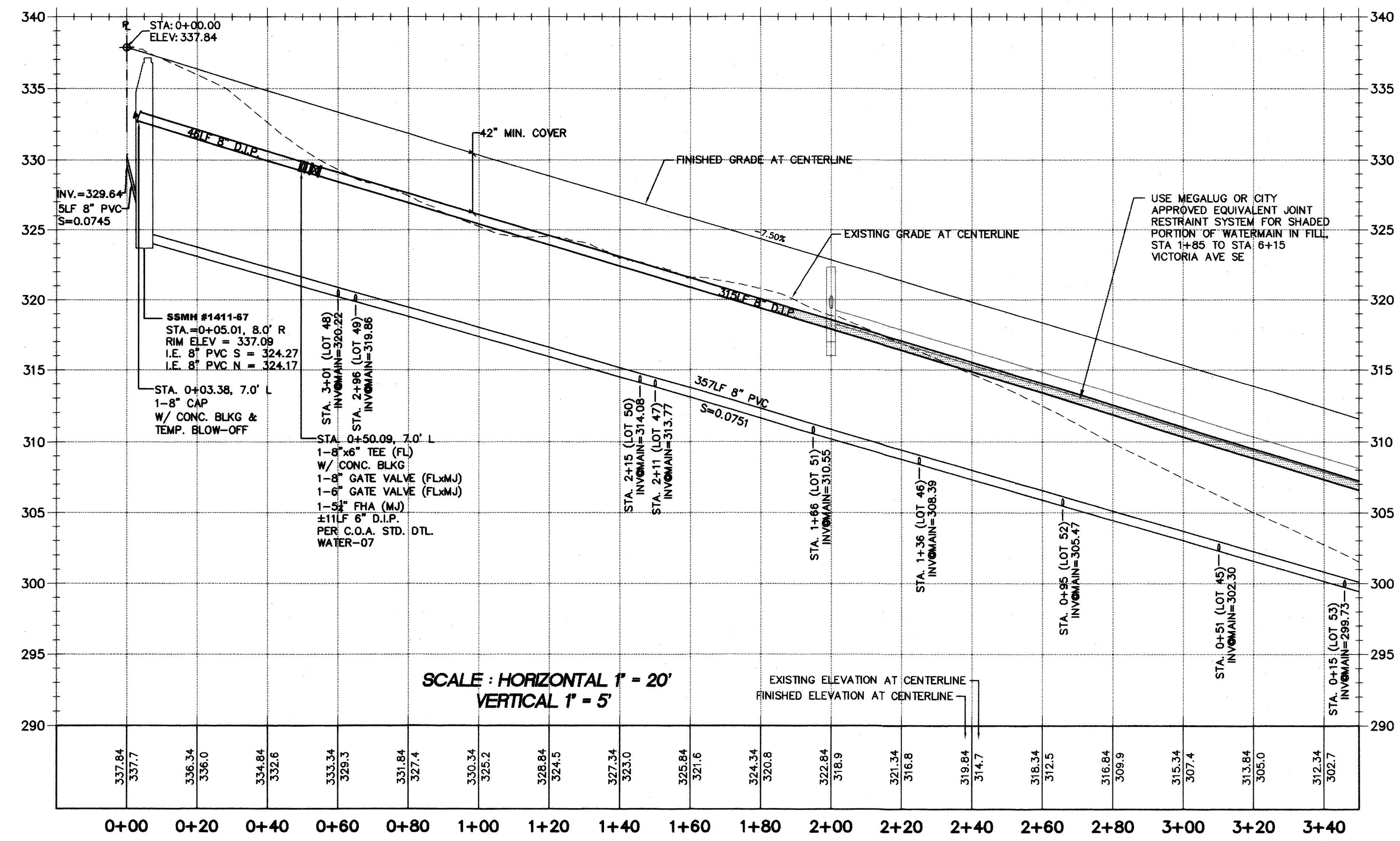
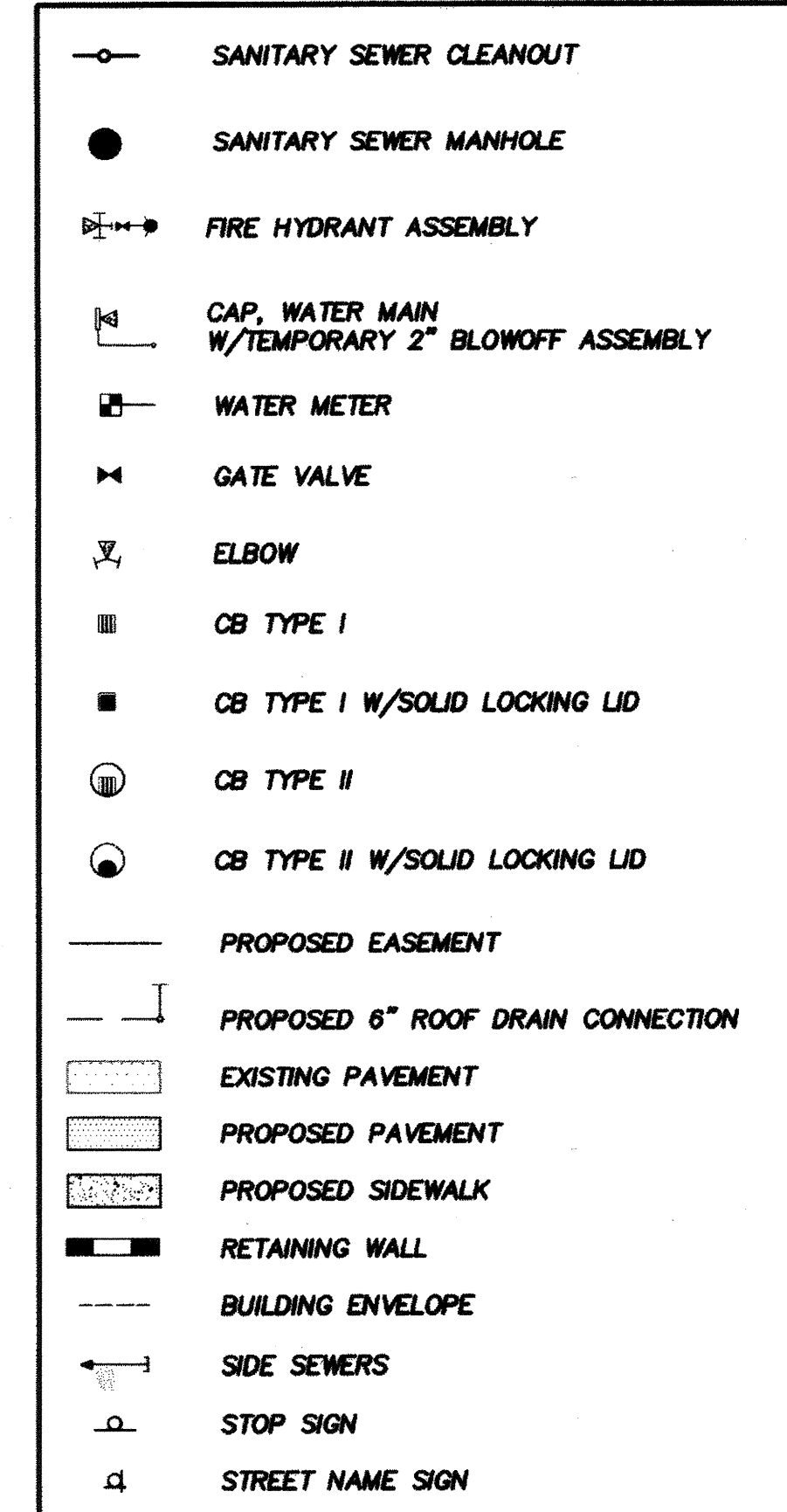
KEYMAP



NOTES:

1. ALL PIPE SLOPES NOTED ARE FT./FT.
2. ALL SANITARY SEWER MANHOLES ARE STATIONED TO CENTER OF STRUCTURE
3. ALL PVC PIPE SHALL BE SDR-35 UNLESS OTHERWISE NOTED
4. SIDE SEWERS TO BE INSTALLED PER C.O.A. STD. DTL. SEWER-01 AND SEWER-02
5. SEWER STUBS TO BE MARKED USING A PAINTED 2"x4" MARKED "SEWER"
6. WATER SERVICE STUBS TO BE MARKED USING A PAINTED 2"x4" MARKED "WATER"
7. ALL SIDE SEWERS ARE STATIONED FROM THE NEAREST DOWNSTREAM MANHOLE
8. ALL WATER METERS SHALL BE 3/4 INCH PER C.O.A. STANDARD DETAIL WATER-13, 1" MINIMUM SERVICE LINE BETWEEN MAIN AND 3/4 INCH METER.
9. SANITARY SEWER MANHOLES SHALL BE EQUIPPED WITH A SOLID LOCKING LID WITH THE WORDS "CONFINED SPACE - PERMIT REQUIRED" CAST INTO LID.

LEGEND



15445 53RD AVE. S.
SEATTLE, WA 98188
PHONE: (206) 431-7970
FAX: (206) 388-1648
WEB SITE: PACENG.COM

Pacific Engineering Design, LLC
Civil Engineering and Planning Consultants

LAKELAND HILLS ESTATES
CITY OF AUBURN
FOR: DONOVA NORTHWEST, LLC
C/O MILLENNIAL BUILDERS
17837 1ST AVENUE SOUTH, PMB#2
NORMANDY PARK, WA 98148
PHONE: (206) 431-3884
FAX: (206) 289-9219

PROJECT NO.: 12022
DRAWN BY: ENM
ISSUE DATE: 07-17-07
SHEET REV.: 3-20-2013

WATER AND SEWER PLAN AND PROFILE
(VICTORIA AVE. STA. 0+00-3+50)

RECORD DRAWING CERTIFICATION
THESE DRAWINGS CONFORM TO THE CONTRACTOR'S CONSTRUCTION RECORDS.
BY: _____ DATE _____
TITLE/POSITION: _____
CONFIRMED BY CITY: _____ DATE _____

PROJECT REF: FAC07-0016
4-5 May 10, 2013
THESE PLANS ARE "APPROVED" FOR CONFORMANCE WITH THE CITY OF AUBURN'S ENGINEERING DIVISION REQUIREMENTS.
APPROVED BY: *Danni Sello*
DATE APPROVED: 5/15/13

05056WA11-C30.DWG
C43
SHEET 43 OF 55