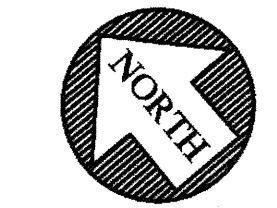
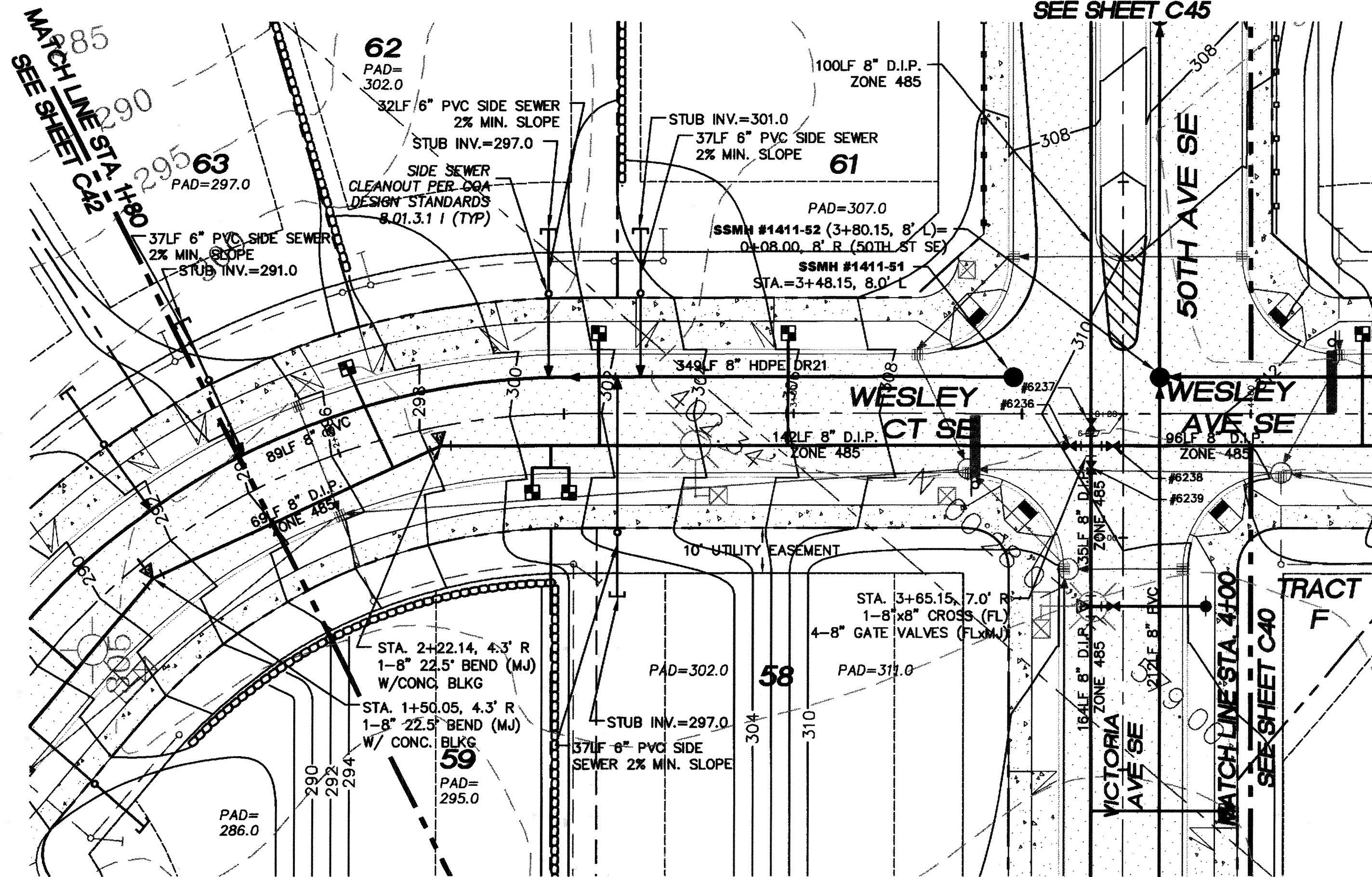


PORTION OF THE SW 1/4, SECTION 32, T. 21 N., R. 5 E., W.M.

SEE SHEET C45



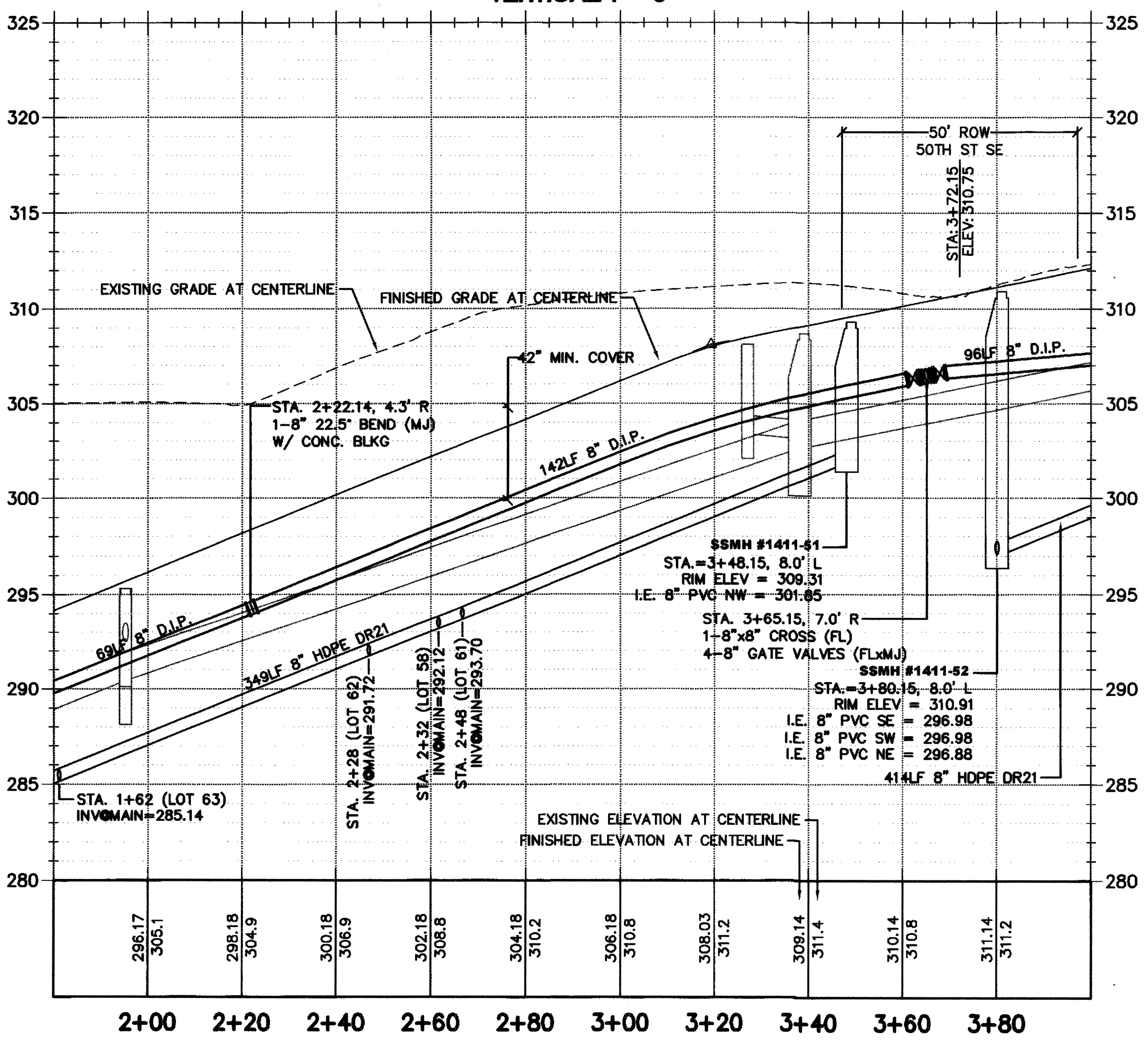
SCALE 1" = 20'

NOTES:

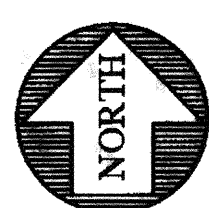
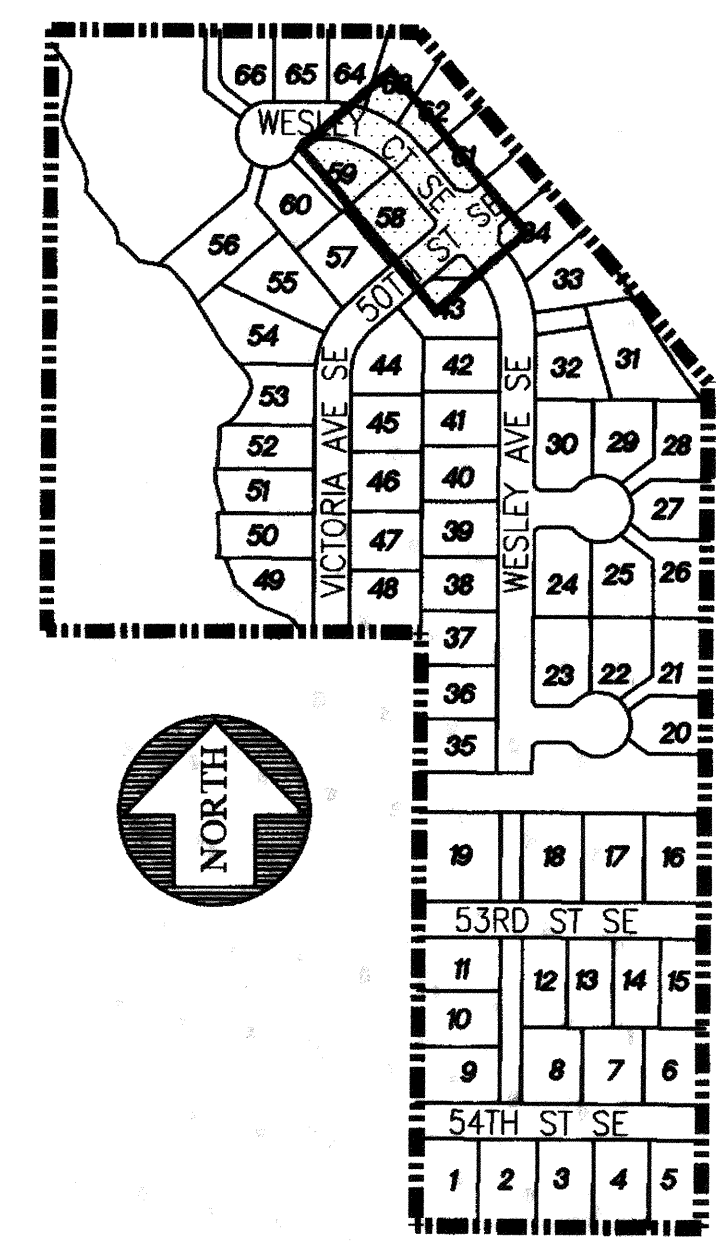
1. ALL PIPE SLOPES NOTED ARE FT./FT.
2. ALL SANITARY SEWER MANHOLES ARE STATIONED TO CENTER OF STRUCTURE
3. ALL PVC PIPE SHALL BE SDR-35 UNLESS OTHERWISE NOTED
4. SIDE SEWERS TO BE INSTALLED PER C.O.A. STD. DTL. SEWER-01 AND SEWER-02
5. SEWER STUBS TO BE MARKED USING A PAINTED 2"x4" MARKED "SEWER"
6. WATER SERVICE STUBS TO BE MARKED USING A PAINTED 2"x4" MARKED "WATER"
7. ALL SIDE SEWERS ARE STATIONED FROM THE NEAREST DOWNSTREAM MANHOLE
8. ALL WATER METERS SHALL BE 3/4 INCH PER C.O.A. STANDARD DETAIL WATER-13, 1" MINIMUM SERVICE LINE BETWEEN MAIN AND 1/2 METER.
9. SANITARY SEWER MANHOLES SHALL BE EQUIPPED WITH A SOLID LOCKING LID WITH THE WORDS "CONFINED SPACE - PERMIT REQUIRED" CAST INTO LID.

SCALE: HORIZONTAL 1" = 20'
VERTICAL 1" = 5'

SEE SHEET C44



KEYMAP



LEGEND

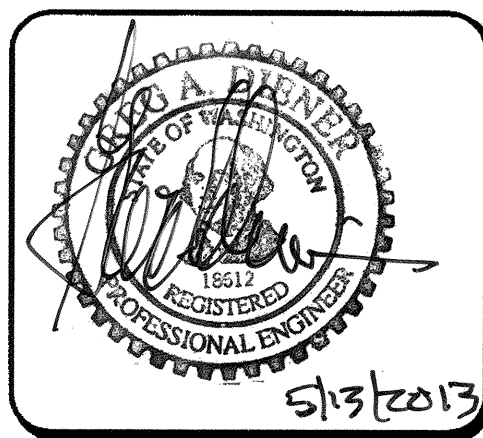
- SANITARY SEWER CLEANOUT
- SANITARY SEWER MANHOLE
- FIRE HYDRANT ASSEMBLY
-
- WATER METER
- GATE VALVE
- ELBOW
- CB TYPE I
- CB TYPE I W/SOLID LOCKING LID
- CB TYPE II
- CB TYPE II W/SOLID LOCKING LID
- PROPOSED EASEMENT
-
- EXISTING PAVEMENT
- PROPOSED PAVEMENT
- PROPOSED SIDEWALK
- RETAINING WALL
- BUILDING ENVELOPE
- SIDE SEWERS
- STOP SIGN
- STREET NAME SIGN

RECORD DRAWING CERTIFICATION
THESE DRAWINGS CONFORM TO THE CONTRACTOR'S
CONSTRUCTION RECORDS.

BY: _____ DATE _____
TITLE/POSITION: _____
CONFIRMED BY CITY: _____ DATE _____

PROJECT REF: FAC07-0016
45 May 14, 2013
THESE PLANS ARE "APPROVED" FOR CONFORMANCE WITH
THE CITY OF AUBURN'S ENGINEERING DIVISION
REQUIREMENTS.

APPROVED BY: *Dennis Solle*
DATE APPROVED: 5/15/13



15445 53RD AVE S
SEATTLE, WA 98188
PHONE: (206) 431-7970
FAX: (206) 388-1648
WEB SITE: PACENG.COM

Pacific
Engineering
Design, LLC
Civil Engineering and
Planning Consultants

LAKELAND HILLS ESTATES
CITY OF AUBURN
FOR: NOVIA NORTHWEST, L.L.C.
C/O: LAKELAND HILLS ESTATES
17857 1ST AVENUE SOUTH, PMB#2
NORMANDY PARK, WA 98148
PHONE: (206) 428-8884
FAX: (206) 286-9518

PROJECT NO.: 12022
DRAWN BY: ENM
ISSUE DATE: 07-17-07
SHEET REV.: 3-20-2013

WATER AND SEWER
PLAN AND PROFILE
(WESLEY AVE. STA.
1+80-4+00)

05056WA08-C28.DWG
C41
SHEET 41 OF 55